

Presenter Biographies



Bruce Wallace

Partner

I lead the Tax & Business Advisory team for Deloitte New Zealand and enjoy helping my clients solve complex tax problems and ensuring their international tax affairs are structured in an appropriate and efficient manner. In my view understanding the business strategy and longer term objectives are key to developing a sustainable long term structure. I have particular experience in international tax matters having worked in our U.S. firm and from assisting a number of New Zealand's largest outbound investors with their international affairs.



David Watkins

Tax Partner, Australia Tax Insights and Policy Group Leader, Deloitte Asia Pacific Tax Policy Leader, Deloitte Australia

David Watkins is the leader of the Deloitte Australia Tax Insights & Policy group. David has over 25 years' experience in corporate income tax and international tax covering a wide range of tax issues across various industry sectors. David has worked in Malaysia, Singapore and New York. In his current role, David's focus is on emerging tax developments and in particular, the Australian tax reform debate and the international process addressing Base Erosion & Profit Shifting (BEPS). The Tax Insights & Policy group is involved at various stages in these emerging issues including consultation and submissions, publications and presentations and assessing the impacts of tax law changes.



Robyn Walker

Partner

I am a Partner within the Tax Team at Deloitte in New Zealand. This involves many things, including preparing submissions on behalf of Deloitte and developing thought leadership in the area of tax. I like to think about how tax developments really impact on Deloitte's clients. I have a particular interest in tax policy and keeping up to date with all the many tax developments. I help Deloitte to advise the Corporate Taxpayers Group.



Patrick McCalman

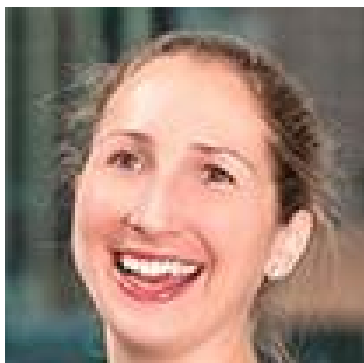
Partner

I enjoy helping my clients understand how tax impacts on their business, and the options they have for ensuring that the tax outcomes align with their business needs and aspirations. It's about making my advice real in the context of what they are trying to achieve, and helping them see both the opportunities and the risks that may arise and need to be managed. I work across a range of industries, drawing on my own client side experience to ensure that I give pragmatic, valuable advice.



Phillippa Harford
Chief Financial Officer, Infratil

Phillippa is Chief Financial Officer of Infratil and is responsible for Infratil's financial and management reporting, taxation, treasury and risk. She is also Director of Wellington Airport, RetireAustralia and RHC Holdco Limited (a NZ radiology services provider). Phillippa had previously been Deputy CFO of Infratil and Head of Tax for Morrison & Co, having joined Morrison & Co in 2009 from Vector Limited where she was Head of Tax. She also worked for several years providing tax advisory services at PricewaterhouseCoopers, in New Zealand and offshore.



Rebecca Small
Executive GM, Tax and Payroll, Xero

Rebecca has worked at Xero since 2015, where she is responsible for Xero's global tax and payroll function, including operations in 12 countries (and counting!). Prior to joining Xero to establish the Group's tax function, Rebecca worked at Deloitte for over 10 years, including 3 years in the Washington National Tax transfer pricing practice.



Jodee Webb
Partner

The tax environment is in a state of change on a global scale. I really enjoy working alongside organisations to make their tax function fit for the future. This includes exploring and implementing tax strategy, governance and technology solutions that can help manage risk, competing demands for tax resource, and make the most of opportunities. I'm passionate about getting to know my clients and their business in order to provide practical, commercial and jargon free tax advice. In particular focusing on corporate tax and the constantly evolving international tax landscape.



Greg Haddon
Partner

I am a corporate tax specialist. I assist clients with compliance obligations and the governance around the process risks, and advise on the acquisition and divestment of business structures and entities including due diligence and the tax implications of specific transactions. I also prepare and deliver submissions to government on proposed tax changes. My industry focus lies in the financial services, oil & gas, telecommunications and construction industries.



Annalie Hampton

Partner

Ko Ngāpuhi rāua ko Te Roroa ōku iwi
Ko Annalie tōku ingoa.

Annalie is a partner in Deloitte's Auckland tax practice with over 20 years of professional experience in corporate taxation.

Annalie has a personable, collaborative approach and is committed to working with her clients as one team to ensure tax opportunities and affairs are effectively managed on a real time basis. Annalie's expertise is in the corporate sector over a wide range of industries and includes experience in effective tax structuring and advising clients of the tax aspects of transactions. She has a particular emphasis on international tax matters associated with inbound and outbound investments. Annalie has international tax experience and has spent time in Australia and China on secondment.

As a Māori wahine working in business, she relishes the opportunity to awhi our Māori talent and accelerate their business knowledge so that they are able to grow and flourish as Māori.



Susan Wynne

Director

Having been a business tax specialist for over 23 years my aim is to assist businesses to manage their tax obligations with ease by providing access to expert tax advice. As tax legislation changes with increasing speed and Inland Revenue increases focus on taxpayers' compliance I am passionate about sharing my technical expertise along with my pragmatic/commercial approach based on experience to help my clients.



Liz Nelson

Partner

Having worked in corporate tax for more than 15 years, I enjoy working with clients to help them through complex commercial and tax issues. I generally work with mid to large corporates, with an industry focus on the financial services and infrastructure industries. I have experience in cross-border and international tax issues, and have spent time working in the US. My goal is to deliver practical advice to my clients in a way that can be easily understood.



Alex Robinson

Director

By navigating the complex world of taxation with my clients, I help them thrive and grow. By working with a broad base of businesses ranging from listed companies and multi-nationals, through to Local Government entities, SMEs and charities, I have developed deep corporate tax knowledge. With experience in international tax structuring, merger and acquisition activity, tax due diligence, and research and development tax incentives, I am very much interested in the politics and policy intent behind tax regimes, as well as their implementation and interpretation. This has led to me take an active role in tax training internally and externally, as well as becoming a recognised expert in earthquake/disaster insurance tax matters.

Outside work, I am a proud father to a very energetic young daughter, and my wife and I are trained opera singers, performing with New Zealand Opera, as well as running a local opera company - Toi Opera - here in Christchurch.



Simon Taylor
Director

My focus is to help businesses access the R&D tax incentive through understanding where qualifying R&D sits within their business and assisting them with the capability to capture it. I have worked in R&D tax incentives under the previous regime in New Zealand and practiced it in both the UK and Australia across a wide range of industries. I'm excited about helping businesses to grow through maximising their level of R&D activity and to fuel further innovation.



Bart de Gouw
Partner

I work with my clients on international tax matters to create value for the business and shareholders. My specialist area is transfer pricing which deals with the pricing of all cross border transactions within multinational groups of companies. I strive to provide effective solutions to the issues of tax planning, compliance and dispute management across multiple countries. My experience consists of over 27 years in transfer pricing and tax consulting in New Zealand and Europe.



Melanie Meyer
Partner

Having worked exclusively in transfer pricing for over 20 years, my goal is to provide and implement pragmatic solutions to address opportunities and risks in cross-border activities. With the current heightened global awareness surrounding international profit shifting, I work with businesses using transfer pricing is a mechanism to assist in reaching and expanding their cross-border potential, with a governance overlay.



Annamaria Maclean
Partner

It's an interesting time to be working in tax with the constant change which brings constant challenge! I enjoy helping clients with complex tax issues and their international tax affairs. I have significant experience in tax including working as a tax manager at a large New Zealand listed corporate. I now have a particular focus on tax issues affecting corporates and multinational entities. As part of this I have been highly involved in the base erosion and profit shifting developments and assessing the impact on multinationals operating in New Zealand. I also have extensive experience working on governance reviews for corporates and putting in place the appropriate governance policies and procedures from a tax perspective.



Jeremy Beckham
Associate Director

I enjoy helping clients navigate the complexities of the law and meet their obligations. I work with corporate clients across a range of industries and specialise in corporate income tax and international tax matters. I have significant experience in working through the various international tax issues that can arise under New Zealand's domestic response to the OECD BEPS Action Plan and working with Officials at Inland Revenue on remedies that may be required.

I serve as a Committee member of the Tax Policy Charitable Trust and represent Deloitte on the Committee of the Young IFA Network in New Zealand.



Hadleigh Brock

Partner

I am a M&A Tax Partner based in Deloitte's Auckland office. I have over 18 years' experience acting for a broad range of domestic and international clients on a wide variety of transactions. This includes both buy and sell side transactions, IPO's, and group restructures. I act for corporates, private capital, and family owned businesses and individuals, and have acted on some of NZ's largest transactions in recent years. I am passionate about working with my clients to assist them in achieving their commercial objectives which includes realising visible value and ensuring a successful transaction strategy.



Simon Chapman

Partner – Corporate Finance

Assisting business owners and helping them increase and realise the value of their hard work is one of the most rewarding parts of my job. I work with clients to maximise the value of their business by clearly defining and articulating their strategy and assisting them in identifying the highest valued acquirers of the business.



Vyshi Hariharan

Associate Director

I enjoy working alongside my clients to provide complete end-to-end tax services to support them during the transaction process and to maximise the value created for them. This ensures that, during the transaction process, their time and attention is focussed on matters that are most critical and which add the most-value to the transaction and to the business.



Hamish Tait

Associate Director

As a tax adviser at Deloitte, I assist with all aspects of corporate tax, and advise a number of large corporates on their tax affairs. I specialise in helping clients with mergers and acquisitions, and advise both domestic and international clients on investment tax structuring and tax due diligence. I also have a special interest in infrastructure projects, and have worked on a number of significant PPP and similar projects in New Zealand.



Jayesh Dahya

Director

I lead the Global Employer Services business in Wellington and together with the support of my team, we help our clients work their way through the myriad of tax rules that apply to internationally mobile employees, managing compliance and assisting with tax equalisation policies. This includes implementing and managing international assignment programmes, preparing cost projections and developing tax effective remuneration packages.

I also have a wide range of tax experience managing corporate tax compliance, advising on cross-border tax implications, the application of double tax treaties and employee share schemes.



Andrea Scatchard

Partner

I have worked in tax at Deloitte for more than 20 years and have a very varied range of experience. Tax can be complicated and daunting, and I take pride in providing practical advice to my clients in a way that is easy for them to understand and implement. I have a deep specialisation in both GST and employment taxes and enjoy working with businesses to ensure they have the right systems and processes in place to manage their obligations and minimise any risks they might face.



Stephen Walker

Director

I have been with Deloitte globally for 13 years, having emigrated to New Zealand in 2013. I am an employment tax specialist with a corporate tax background, making me well placed to help clients navigate the complexities associated with international moves and the flow-on tax consequences this has for both employee and employer. I advise clients across a number of employment tax related matters, including employee share schemes and fringe benefits. More recently, I have helped clients consider the 'future of work' given the changes brought on and accelerated by the COVID pandemic, and what this could mean for the future of their businesses.



Jess Wheeler

Partner

I have been with Deloitte for 10 years, after a stint working in Australia and at another Big4 firm in NZ previously. I am a corporate tax Partner who also specialises in employment taxes. I advise clients across a number of employment tax related matters, including employee share schemes and fringe benefits. More recently, I have helped clients consider the 'future of work' given the changes brought on and accelerated by the COVID pandemic, and what this could mean for the future of their businesses.



Allan Bullôt

Partner

Allan is always happy to talk about all things GST. Having worked exclusively in GST in both New Zealand and Canada for well over two decades, Allan has experience in solving GST issues and problems in a very practical and pragmatic way for a large variety of industries.



Jeanne du Buisson

Director

I'm an indirect tax specialist with a passion for helping clients manage their GST, VAT and customs obligations so that they can focus on their business. I lead a number of national indirect tax initiatives and co-lead our national indirect tax team. I work closely with a range of corporate and private New Zealand businesses in a wide range of industries. I have more than seventeen years' indirect tax experience serving both local and multinational companies in New Zealand and across the world. I enjoy every aspect of my role and find it very rewarding dealing directly with clients and building a trusted adviser relationship with them.



Sarah Kennedy
Director

I have a focus on indirect taxes including giving GST, FBT and charities advice. More specifically I really enjoy managing tax governance and procedure reviews both in preparation for and during what can be a daunting Inland Revenue risk review process. Having such a broad range of experience means that no day is the same and I really enjoy the variety in my role.

GST is a tax that on that at first glance seems simple but under the surface there's a lot of complexity in a very small Act. My favourite days are those where I can share my enthusiasm for GST with clients, help them to make sense of the rules and find a solution that is appropriate for their team and their business.



Kylie Harrison
GST Technical Specialist, Inland Revenue

Kylie Harrison is a GST technical specialist within the customer compliance services network at Inland Revenue. With over 20 years' experience in public and private sector roles, her current position sees her focussing on enhancing the GST technical experience our customers have with IR. This ranges from working with staff and customers to advise on complex GST technical issues and uplift capability through to liaising with policy and other government departments to address identified GST issues.



Jenny Liu
Partner

Leading the Deloitte New Zealand Chinese Services Group has been both challenging and exciting. Our team of Chinese speaking professionals play a key role in assisting both inbound and outbound investments between New Zealand and China. We are proud to have contributed to many successful cross-border investments as a result. My experience with both Deloitte New Zealand and Deloitte China enables me to bridge the tax and accounting differences between the two firms, and allows me to pro-actively manage tax and financial planning for overseas investments.



Campbell Rose
Partner

I work alongside clients to execute transactions smoothly, achieve valuable certainty through binding rulings, and resolve tax disputes - using my technical and strategic expertise. This involves helping clients to manage risk, so I draw from my significant legal experience and broad industry exposure to achieve this by providing pragmatic, commercial and outcome-oriented advice. I enjoy delivering lasting solutions for my clients' tax issues, so they can focus on what they're passionate about – running a successful business.



Ian Fay
Partner

As business leaders and advisors we are being asked to view business as a vehicle for achieving value for employees, communities, customers and the planet, as well as owners. I help businesses make the transition and develop sustainable business models that are social or environmental purpose led.

As a tax specialist, I enjoy helping my clients expand their businesses overseas and managing the inevitable tax challenges that arise. No matter what size a business is, from large corporates through to growing small to medium enterprises I am passionate about helping them reach their aspirations. Ultimately, what I do is find solutions that work best for the specific client – I don't use a one size fits all approach.



Nicola Taylor
Tax Traders Co-founder

Nicola Taylor is co-founder of Tax Traders, one of New Zealand's fastest growing fintech companies specialising in innovative tax payment and funding solutions. Established on the unshakable belief that business can be a force for good, Tax Traders is a certified BCorp and embodies Nicola's desire to improve outcomes for all New Zealand businesses. Since opening its doors in 2012, Tax Traders has earned its place as New Zealand's leading tax pool, serving CFOs and Corporate Treasurers at more than 200 large corporates across the nation. Nicola's drive to think about business differently is the motivation behind Tax Traders' continuing growth.



Barbara Edmonds
Chair Finance and Expenditure Committee

Barbara is the Chairperson of the Finance and Expenditure Committee and Junior Whip for the Labour Party. Barbara was elected to Parliament in 2020 for the electorate of Mana just outside Wellington. Before Parliament, Barbara worked in the Policy Advice and Service Delivery Units of Inland Revenue and more recently a senior advisor to ministers under successive governments. Barbara was a key contributor to the Government's law reforms following the March 15 Terrorist attack and the Government's economic response to COVID-19 in 2020.



David Carrigan
Deputy Commissioner, Policy & Regulatory Stewardship, Inland Revenue

David has held a number of positions within the tax policy function of Inland Revenue since joining the department in 1996. He has an extensive knowledge of tax policy and a deep understanding of the frameworks that underpin tax systems.

With a background in law and languages, David holds a BA and LLB degrees from Auckland University.



Francine Corbett
NZ Superannuation Fund

Francine is part of the New Zealand Superannuation Fund (NZSF) tax team. Prior to NZSF she spent five years as Group Tax Manager of a large publicly listed utility company and prior to that she was a Director in one of the Big Four accounting firms working across a range of sectors. Francine is a member of the CAANZ Tax Advisory Group and has been heavily involved in tax policy development in New Zealand as well contributing in relation to selected issues in Australia, the US, the UK and with the OECD.