

Tariff impact analysis
Delivered with Tariff Vision™



Policy can shift fast. So can you.

Are you prepared for existing and potential tariff impacts? Today's existing and fluctuating tariff policies may present both challenges and opportunities for US importers. To thrive, you may need more than just a snapshot of your tariff exposure; you should be prepared to quickly adapt to changing regulations and monitor your realization of tariff mitigations.

Deloitte's trade advisory services provided with our Tariff Vision™ solution provide actionable insights to help identify mitigations being used and potential new opportunities, transforming uncertainty into strategy.¹

Tariff Vision™

Built by US customs specialists. Powered by data.



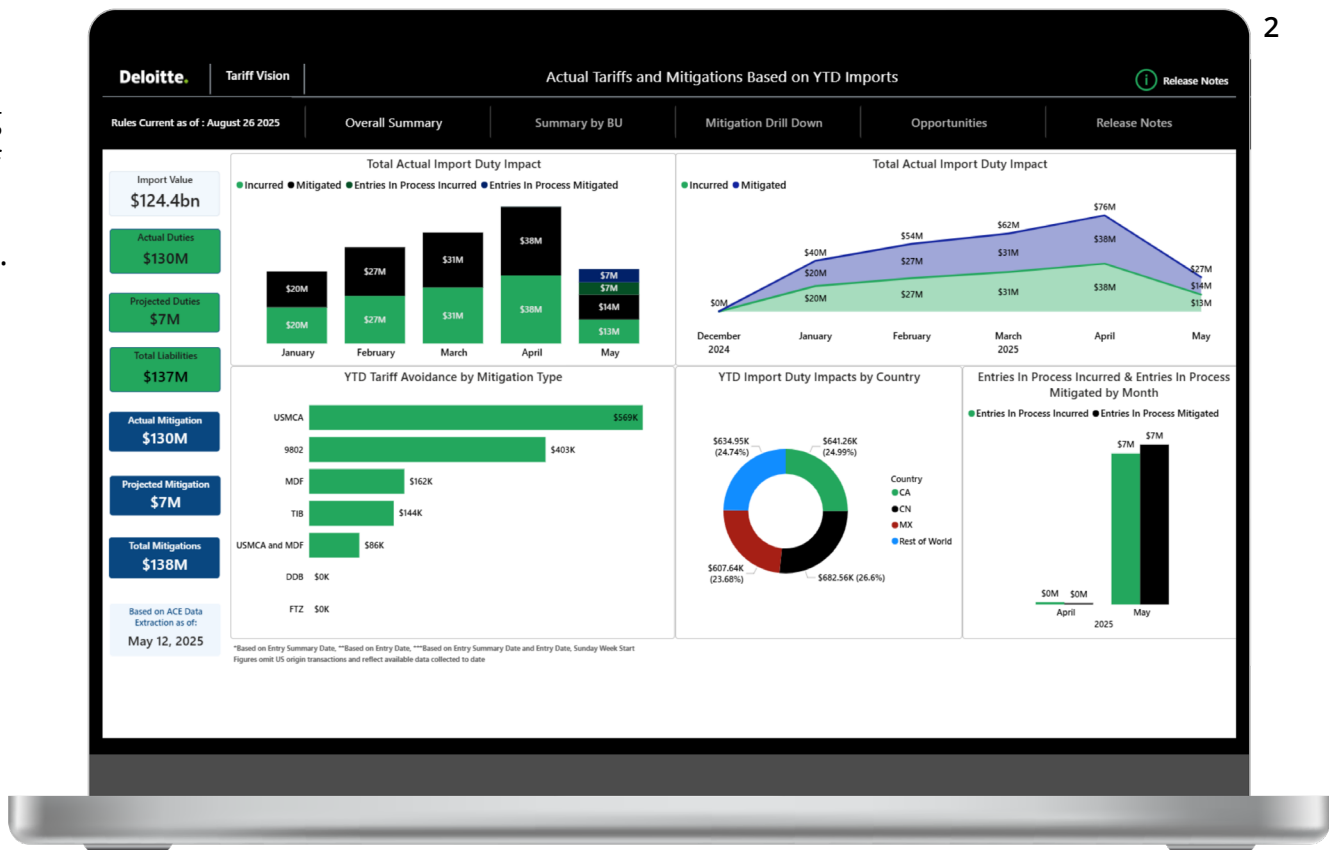
Estimated annualized exposure
based on historical imports, with supporting views on past mitigations such as the usage of United States-Mexico-Canada (USMCA) Free Trade Agreement (FTA) and scenario modeling.



YTD Impact monitoring
of import transactions including transaction volumes, duty payments, mitigations claimed, and potential opportunities for further investigation (e.g., potential broker errors, USMCA qualification).

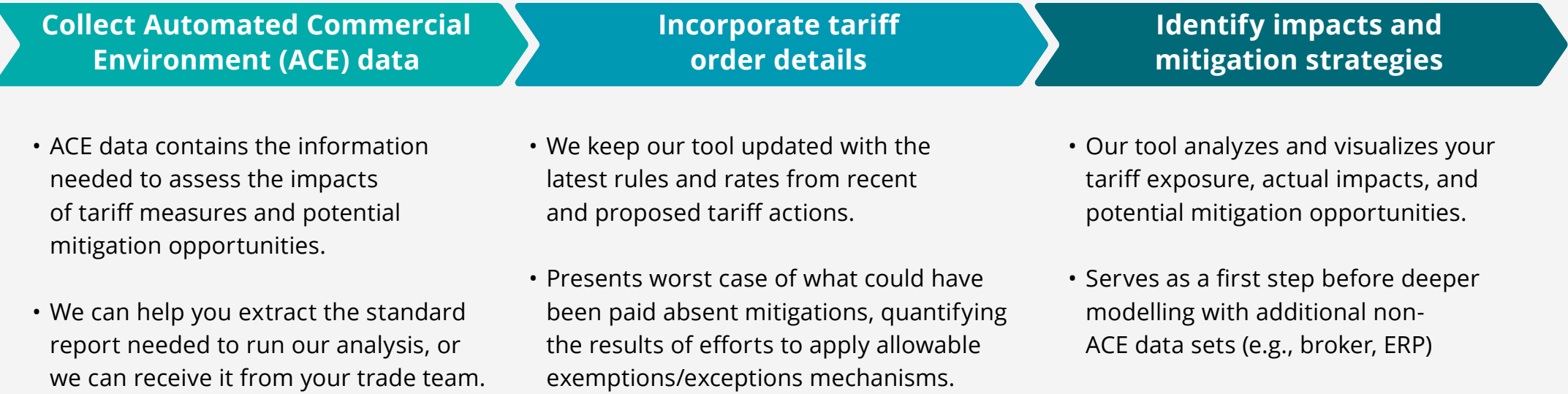


Integrated data pipeline
to ingest standardized reports, analyze and visualize impacts, and enable follow-up actioning.



Process flow

Streamlined process that enables quick transformation of raw import data into clear, actionable insights—without manual effort or guesswork.



A differentiated service delivery approach

Limited to no manual input required

No need to guess and enter your own volumes, rates, or parse through complex stacking rules.

Built-in tariff order logic

Incorporates the latest regulatory details for accurate, automated exposure, and savings calculations.

Regular updates

Periodically updated as tariff policies and exemptions/exceptions are introduced, amended, or expanded.

Embedded mitigation insights

Identifies potential duty mitigation and quantifies potentially missed opportunities.

Planned releases

Expanded functionalities and visualizations for potential US and other country tariff actions.

To learn more, read our recent articles on tariff expansions and sign up for our mailing list at Deloitte [US International Tax Alerts](#).

Visibility

Deloitte's Tariff Vision™ impact visualization tool summarizes the impact of existing and new tariffs based on your import data. We leverage your actual import data to create insights that are directly relevant and actionable for your business, providing an immediate snapshot to support compliance review, business planning, and opportunity identification.

Strategy

Our team of Global Trade Advisory professionals has deep knowledge of global trade compliance regulations and actively monitors the latest around global tariffs. We assist in identifying customs compliance obligations and duty relief considerations for your products aligned with your organization's business requirements.

In addition, we offer tailored advanced scenario modeling and planning—helping you evaluate a range of regulatory and business scenarios specific to your needs.



Technology

Our technology specialists focus on enabling effective operations with appropriate internal controls and support global trade compliance management, including implementation of bespoke tariff analytics and implementation or expansion of ERP and global trade management software.

We also help with broader technology enablement and strategy topics such as business case development, planning, and software selection.

Operations

Deloitte can navigate the trade compliance processes such as classification, free trade agreement qualification/solicitation, post-entry review, and transaction monitoring/ reporting operationally.

This enables you to focus on driving global trade strategy while our experienced team helps you navigate the day-to-day tactical activities.

Contact us

Kristine Dozier

Principal,
Deloitte Tax LLP
+1 469 417 2884
kdozier@deloitte.com

Helen Cousineau

Tax Managing Director,
Deloitte Tax LLP
+1 312 486 1684
hcousineau@deloitte.com

Gabe Kitamura

Tax Senior Manager,
Deloitte Tax LLP
+1 212 436 7190
gkitamura@deloitte.com

Eric Woelke

Tax Senior Manager,
Deloitte Tax LLP
+1 704 887 1944
ewoelke@deloitte.com

¹Information as of June 2025

²Visualizations subject to change

This document contains general information only and Deloitte is not, by means of this summary, rendering accounting, business, financial, investment, legal, tax, or other professional advice or services. This document is not a substitute for such professional advice or services, nor should it be used as a basis for any decision or action that may affect your business. Before making any decision or taking any action that may affect your business, you should consult a qualified professional advisor. Deloitte shall not be responsible for any loss sustained by any person who relies on this document. The services described herein are illustrative in nature and are intended to demonstrate our experience and capabilities in these areas; however, due to independence restrictions that may apply to audit clients (including affiliates) of Deloitte & Touche LLP, we may be unable to provide certain services based on individual facts and circumstances. As used in this document, "Deloitte" means Deloitte Tax LLP, a subsidiary of Deloitte LLP. Please see www.deloitte.com/us about for a detailed description of the legal structure.