

# Cyber Operations and Managed Services

Public sector organizations are proactively adopting modern cloud technologies to effectively tackle their ever-evolving cybersecurity challenges and enhance overall performance, scalability, and security while simultaneously reducing maintenance and operating costs. Through collaboration with Deloitte, public sector clients can harness the power of cloud technologies to build robust cyber capabilities and support organizations on their journey towards a more secure and resilient future.



## Cloud Foundation Services

Achieve and maintain a strong security posture by leveraging Google Cloud's Security Foundation solution, which includes a foundational set of products across Identity & Security, Network Security, and Compute Management.



## Security Orchestration & Automation

Leverage Google Cloud's Chronicle Security Operations to enable fast and effective response to security incidents, in-depth analysis tools to investigate threats, and automation playbooks to support consistency during an incident response.



## Security Analytics

Leverage Google Cloud's BigQuery™ or Vertex AI™ with a specialized Large Language Model for security (Sec-PaLM) to perform ad-hoc and complex SQL queries on large-scale security datasets, enabling analysts to explore data, identify patterns, and detect anomalies or potential threats.



## Governance and Compliance

Create a comprehensive cyber strategy that accounts for risks, threats, and compliance requirements using Google Cloud's suite of security and resilience solutions to address business continuity, secure software supply chains, implement zero trust and advanced security operations, and enable rapid recovery.

### Identify

Evaluate your organization's current IT risk and receive recommendations for improving your security posture with Google Cloud's Risk Assessment.

### Protect

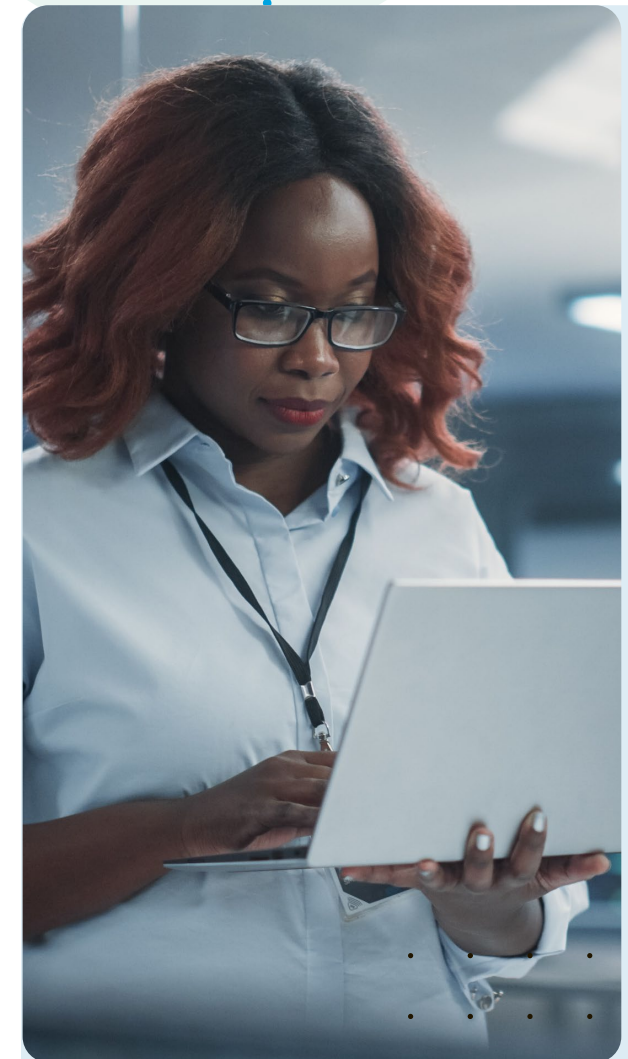
Protect your organization with Secure Software Supply Chain, Data Protection, and meet the Federal government's Zero Trust requirements with BeyondCorp™ Enterprise.

### Detect & Respond

Detect and respond to cybersecurity incidents with Google Cloud's Security Command Center and Deloitte's Managed Detect and Respond (MXDR) solution built on Chronicle.

### Recover

Recover from a ransomware attack and resume daily operations within minutes. Google Cloud's Actifio Go solution can improve the resilience of all your on-premise and Google Cloud assets.



# Our offerings in action: applying our capabilities to your use cases



## Secure Foundations Landing Zone, Stand-Up, & Migration

Establish a secure cloud environment using Deloitte capabilities that leverage Google Cloud native tools like Security Command Center and Assured Workloads to create a baseline of cloud accounts, tenants, shared networking, logging, and encryption with pre-configured security policies and guardrails.



## Security Operations

Meet Federal and industry requirements and continuously innovate to stay ahead of the adversary using Chronicle Security, and the full spectrum of Deloitte's Managed Security Services. Additionally, Deloitte's Managed Detect and Respond (MXDR) capability – built using Google Cloud's Chronicle solution – can help with threat hunting, prevention, detection, response, and remediation capabilities.



## Cyber Data Lake

Transition from security event management into advanced analysis, Artificial Intelligence and Machine Learning, and compelling visualizations to effectively deliver a wide range of behavioral, predictive, and policy-driven cybersecurity outcomes using a range of Google Cloud's like VertexAI™, BigQuery™, VirusTotal™, Google Kubernetes Engine, and DataProc.



## Zero Trust

Transition to a secure, Zero Trust environment with Deloitte's Zero Trust approach and Google Cloud's BeyondCorp™ Enterprise solution meeting Federal requirements such as the Federal Zero Trust Strategy (M-22-09).

## Why Deloitte & Google Cloud

Deloitte helps organizations advance their digital transformation efforts. In 2023, Deloitte was named the Partner of the Year for Public Sector (Global), Services (North America), Security Specialization (Global), and the Generative AI Industry Solution which is a testament to our ability to develop innovative solutions that are tailored to meet the specific needs of an organization.

### LEARN MORE

#### Vishal Kapur

Lead Alliance Partner  
Deloitte Consulting LLP  
vkapur@deloitte.com

#### Mason Evans

Managing Director  
Deloitte & Touche LLP  
masevans@deloitte.com



Learn more

This publication contains general information only and Deloitte is not, by means of this publication, rendering accounting, business, financial, investment, legal, tax, or other professional advice or services. This publication is not a substitute for such professional advice or services, nor should it be used as a basis for any decision or action that may affect your business. Before making any decision or taking any action that may affect your business, you should consult a qualified professional advisor. Deloitte shall not be responsible for any loss sustained by any person who relies on this publication.

All product names mentioned in this document are the trademarks or registered trademarks of their respective owners and are mentioned for identification purposes only. Deloitte & Touche LLP is not responsible for the functionality or technology related to the vendor or other systems or technologies as defined in this document. As used in this document, "Deloitte" means Deloitte & Touche LLP, a subsidiary of Deloitte LLP. Please see <http://www.deloitte.com/us/about> for a detailed description of our legal structure. Certain services may not be available to attest clients under the rules and regulations of public accounting.

Copyright © 2023 Deloitte Development LLC. All rights reserved.