



Elevating cyber protections with Secure by Design

Business requirements and customer demands are forcing organizations to rapidly develop and deploy applications and bring products to market.

This expedited development and expansion introduces a multitude of challenges when it comes to applying security:

Difficulty applying consistent and standardized security controls across all solutions in the product lifecycle.

Security is managed in a siloed manner and may be implemented differently across teams, making it difficult to scale security operations across the development process.

Hard security gate-checks cause strain amongst the business, development, and security teams and can become a blocker to deployment, making security look like a burden rather than an enabler for development teams.

Lack of end-to-end visibility of security posture and security control implementation across the application and product lifecycle.

Secure by Design can help organizations:

- Bring ubiquity and agility to the end-to-end development process.
- Make security consumable to the business.
- Enable centralized reporting to provide visibility into security metrics and risk posture.
- Standardize security controls across the organization, and automate the generation and validation of security requirements.

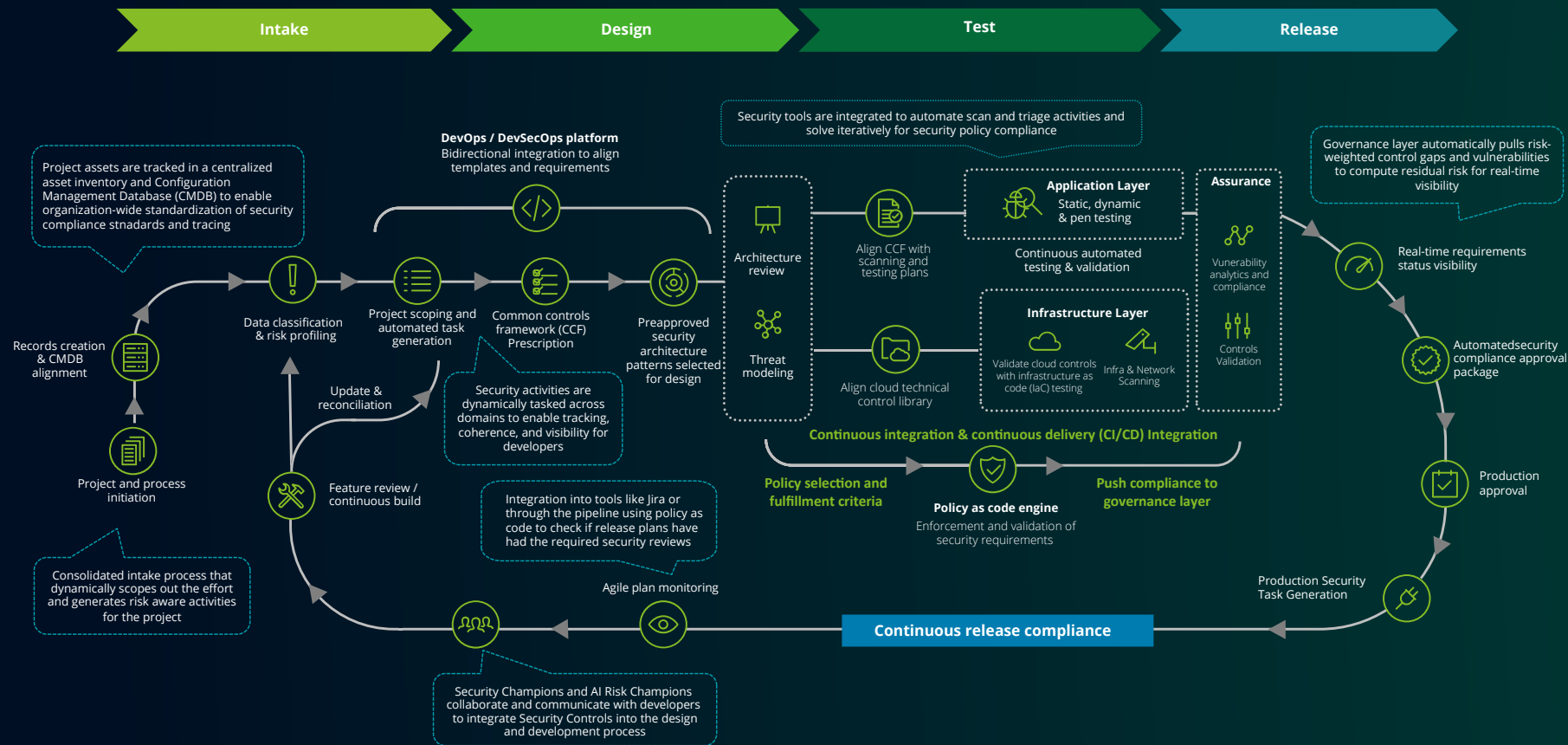
Foundations of Secure by Design

Secure by Design's workflows occur throughout the Secure Software Development Lifecycle (SSDLC) process and across multiple business teams. It leverages automation to generate and assign security tasks in addition to prescribing security controls based on one form completed by the customer.



Workflow

Powered by automated governance and accountability layers, the following workflow depicts an ideal and mature approach to achieving end-to-end security across the entire IT lifecycle from the planning and ideation phase through the production state and beyond.



Success Story

Security automation

Fortune 50 Hospitality Client

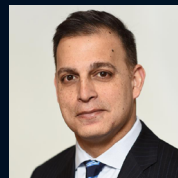
To better secure its Software Development Lifecycle (SDLC) and enhance its cybersecurity posture, this client engaged Deloitte to build and operationalize a robust automation solution that supported multiple development environments and methodologies, rooted within the SDLC and integrated with project management tools.

- Codified security controls and mapped to security assessment results for automated control generation
- Integrated application testing tools with CI/CD pipeline, pattern provisioning, bug tracking tool, and deployment process
- Implemented automated workflow management for tracking and approval of security requirements based on risk classifications
- Integrated with project management solution to provide demand

Outcomes

- Operationalized Threat Modeling team
- Automated onboarding, security scan execution, and triaging
- Security automation integrated into SDLC
- Robust dashboards and reporting

Unlock the full power
of Secure by Design.
Let us show you how.



Adnan Amjad

Partner
US Cyber
Offering Portfolio Leader
Deloitte & Touche LLP
aamjad@deloitte.com



Vikram Kunchala

Principal
US Cyber
Solutions and Platforms Leader
Deloitte & Touche LLP
vkunchala@deloitte.com



Faris Naffaa

Senior Manager
Secure by Design Solution Leader
Deloitte & Touche LLP
fnaffaa@deloitte.com