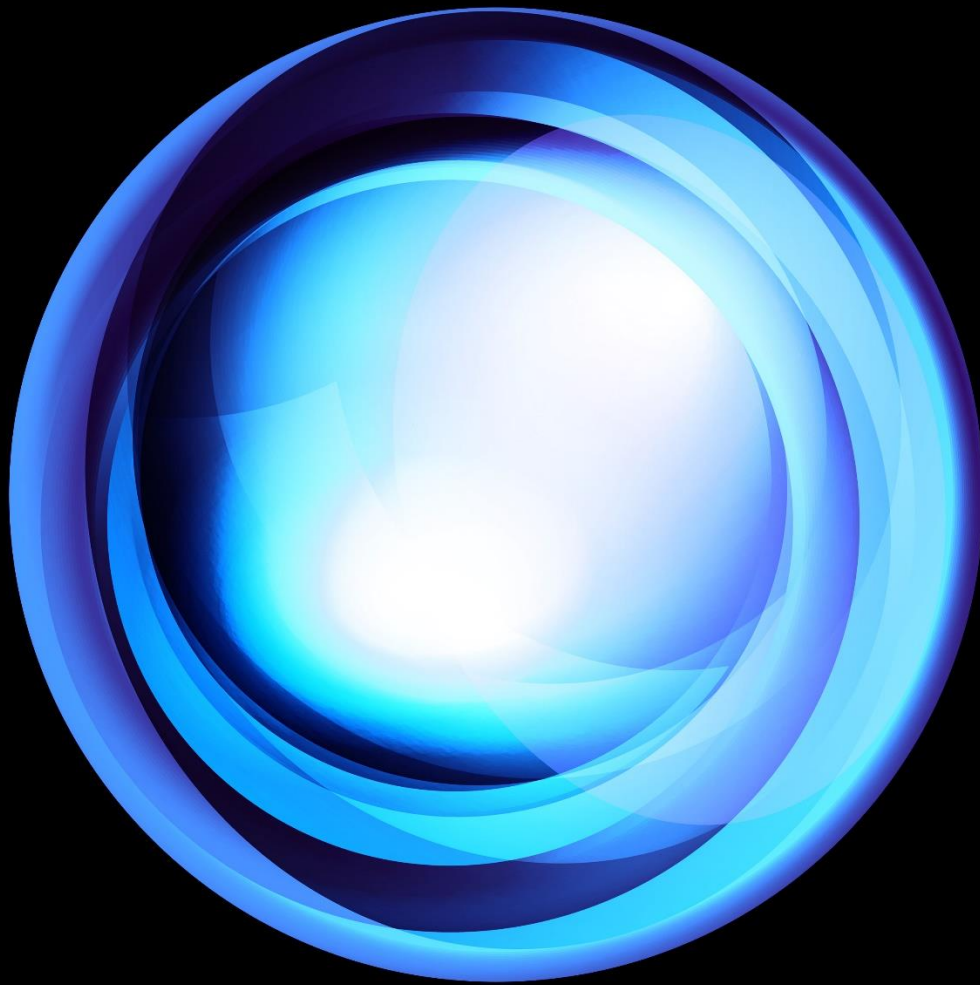


Deloitte.

The CLO Program



Accelerate your leadership journey
Chief Legal Officer Elevate Lab

In today's high-demand, high-risk, and cost-restrictive environment, with competing priorities and constant technological evolution, the role of chief legal officers (CLOs) has expanded and become more complex. CLOs are being called upon to carry out expanded leadership roles—delivering strategic, forward-looking legal advice and leading transformational change within the legal function.

**Thrive and
accelerate** in
times of change



CLOs have always played a critical role in managing a company's risk; constantly changing regulatory and operational environments come with the territory. However, as the organization evolves, CLOs must identify new ways to transform amid competing demands, internally and externally. CLOs are being called upon to expand their leadership role to drive transformational change.

Moving from
intent to action
requires a plan



To support seasoned CLOs at critical points on their career journey (whether transitioning to another company, entering a new industry, or simply needing to pivot to meet evolving demands), and to help them reach their strategic goals, the Chief Legal Officer Elevate Lab (the Lab) is designed to help CLOs prepare for the road ahead. The Lab brings together a multidisciplinary team of experienced Deloitte leaders to help CLOs get ahead (and stay ahead) in the face of growing challenges and demands.

**Elevate your
game** in a
single day



The Lab is an eight-hour immersive experience designed to help CLOs thrive and succeed in their role. The agenda uses proprietary research Deloitte developed from interviews with more than 100 executives from Fortune 1000 companies. Capitalizing on those insights, the Lab focuses on the three most important resources any CLO must manage: time, talent, and relationships. At the close of the Lab, the CLO will have a tailored, 180-day action plan to help drive success.

Virtual and in-person labs are available

One day that can change everything

The CLO Elevate Lab is an engaging, interactive session shaped by Deloitte's deep experience working side-by-side with successful CLOs before, during, and after they assume this important role. The agenda is centered around four work streams:



Define and communicate your priorities



Realign the talent strategy for your team

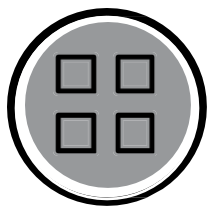


Understand and influence key stakeholders



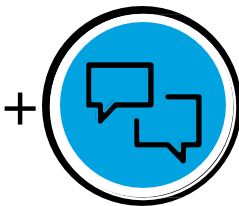
Frame concrete actions to achieve priorities

The Lab formula



Research-based content

Frameworks built on empirical data, research, focused expertise, and cumulative learnings from 3,000+ Lab sessions.



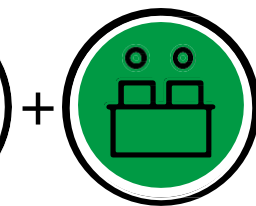
Interactive, hands-on methods and exercises

Content informed by insights from stakeholders you identify and exercises based on behavioral research and team dynamics.



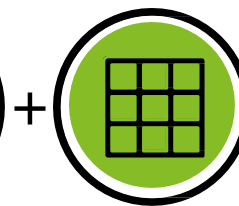
Relevant subject-matter experience

Diverse perspectives from leaders that know your challenge, industry, and business.



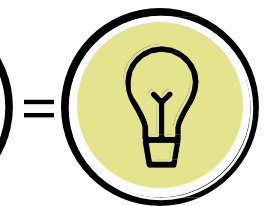
Highly experienced facilitators

Business practitioners specializing in intervention, disruption, alignment, and consensus.



Immersive environment

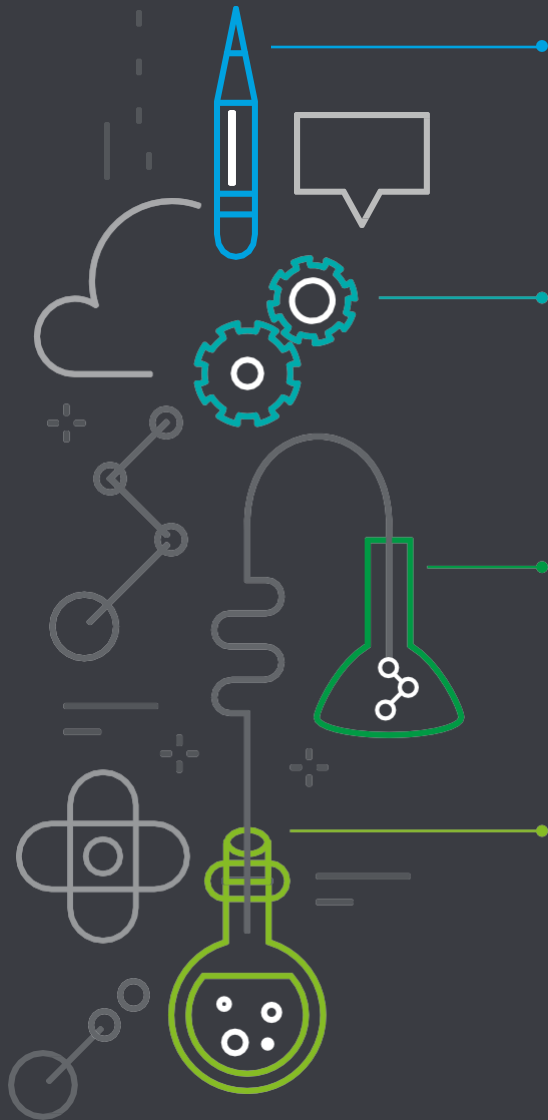
Whether virtual or in person, a collaborative environment that leverages technology, proprietary IP, and proven facilitation methods.



Breakthrough

Breakthrough ideas, aligned team, defined next steps.

The focus of your CLO Elevate Lab



Hopes, fears, and legacy: **Start with your aspirations**

To leave your mark, you first need to identify your goal. It starts with aligning where you want to go with where the organization needs to be, in an unbiased environment.

Strategies and priorities: **Consider where you focus your energy**

There will be endless demands on your time. Successful CLOs determine how to balance their time and energy and focus on the most critical priorities.

Talent and skills: **Assessing your team**

Getting to the heart of talent issues is at the center of every leadership success story. Figuring out the capabilities and bandwidth of direct reports, as well as the scope and efficacy of reporting relationships, is critical.

Stakeholder analysis: **Examine relationships and influence**

It is critical to identify your key stakeholders, make time to cultivate your relationships with them, and understand how to successfully influence and support them.

Taking the reins

To drive focus and align goals, the CLO Elevate Lab culminates in the creation of an actionable plan built around top priorities and milestones identified during the session. It will include early wins along with issues that need urgent attention, as well as longer-term priorities that are important to the success of the organization.

Experience excellence

This experience requires time away from the daily grind to break through the clutter, catalyze new thinking, and develop a plan of action. The experience can help in three key areas:

- Empower performance excellence by optimizing the CLO skills to execute and lead
- Enhance and elevate the value a CLO brings to the organization
- Expand the impact and ability to manage the complexities of the role

Let's talk

For more information, contact your Deloitte leader or one of the following:

Frances Ho

US Chief Legal Officer Program Experience Director
Deloitte Financial Advisory Services LLP
+1 713 982 3168
fraho@deloitte.com

Rachel Linder

US Chief Legal Officer Labs Program Manager
Deloitte Financial Advisory Services LLP
+1 571 302 2776
ralinder@deloitte.com

For additional inquiries about our Chief Legal Officer (CLO) Program, please feel free to contact us at [US Chief Legal Officer Program](#).



As used in this document, "Deloitte Risk & Financial Advisory" means Deloitte & Touche LLP, which provides audit, assurance, and risk and financial advisory services; Deloitte Financial Advisory Services LLP, which provides forensic, dispute, and other consulting services; and its affiliate, Deloitte Transactions and Business Analytics LLP, which provides a wide range of advisory and analytics services. These entities are separate subsidiaries of Deloitte LLP. Please see www.deloitte.com/us/about for a detailed description of our legal structure. Certain services may not be available to attest clients under the rules and regulations of public accounting.

This document contains general information only and Deloitte Risk & Financial Advisory is not, by means of this document, rendering accounting, business, financial, investment, legal, tax, or other professional advice or services. This document is not a substitute for such professional advice or services, nor should it be used as a basis for any decision or action that may affect your business. Before making any decision or taking any action that may affect your business, you should consult a qualified professional adviser.

Deloitte Risk & Financial Advisory shall not be responsible for any loss sustained by any person who relies on this document.