



US Japanese Services Group:
Crafting tailored solutions for
unique markets

米国日系企業サービスグループ

Table of contents

US Japanese Services Group	1
US JSG offices	2
Deloitte in the United States	5
Global JSG offices	6
Worldwide—our global organization	7
Our services	8
Global and US JSG network	10
Why Deloitte JSG?	11
US JSG leadership	12



US Japanese Services Group

As a leading organization serving Japanese multinational companies, the US Japanese Services Group (JSG) specializes in responding to the unique needs of Japanese companies. We utilize our extensive experience, knowledge and global network, along with careful consideration of Japanese business, culture and customs, to offer exceptional services to our clients.

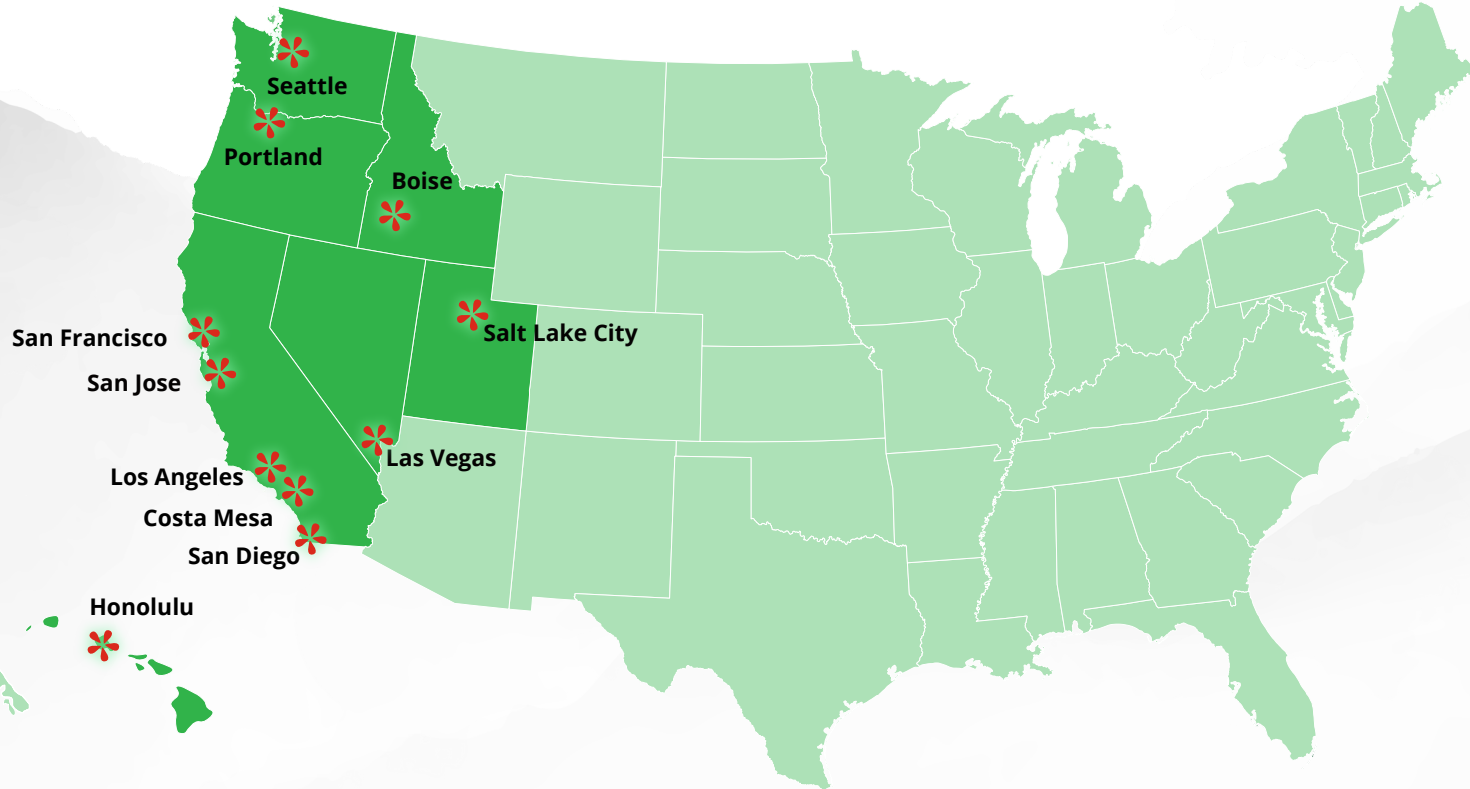
About the US JSG

Established in 1975, the JSG has been providing services to Japanese companies with our extensive industry experience and technical knowledge across service lines globally, leveraging our deep understanding of Japanese culture and customs. The JSG is a network of approximately 1,400 professionals worldwide outside Japan, including Deloitte Japan expatriates.

The US JSG, as a key component of the global JSG, is dedicated to providing top-notch services to our clients and seamless collaboration through Deloitte member firms to drive growth across businesses, industries, and markets.



US JSG offices



West region

Boise

800 W. Main Street
Suite 1400
Boise, ID 83702

Las Vegas

8474 Rozita Lee Avenue
Suite 300
Las Vegas, NV 89113

Salt Lake City

95 S. State Street
Suite 900
Salt Lake City, UT 84111

San Jose (Silicon Valley)

225 W. Santa Clara Street
Suite 600
San Jose, CA 95113

Costa Mesa

695 Town Center Drive
Suite 1000
Costa Mesa, CA 92626

Los Angeles

555 W. 5th Street
Suite 2700
Los Angeles, CA 90013

San Diego

12830 El Camino Real
Suite 600
San Diego, CA 92130

Seattle

1015 2nd Avenue
Suite 500
Seattle, WA 98104

Honolulu

999 Bishop Street
Suite 2700
Honolulu, HI 96813

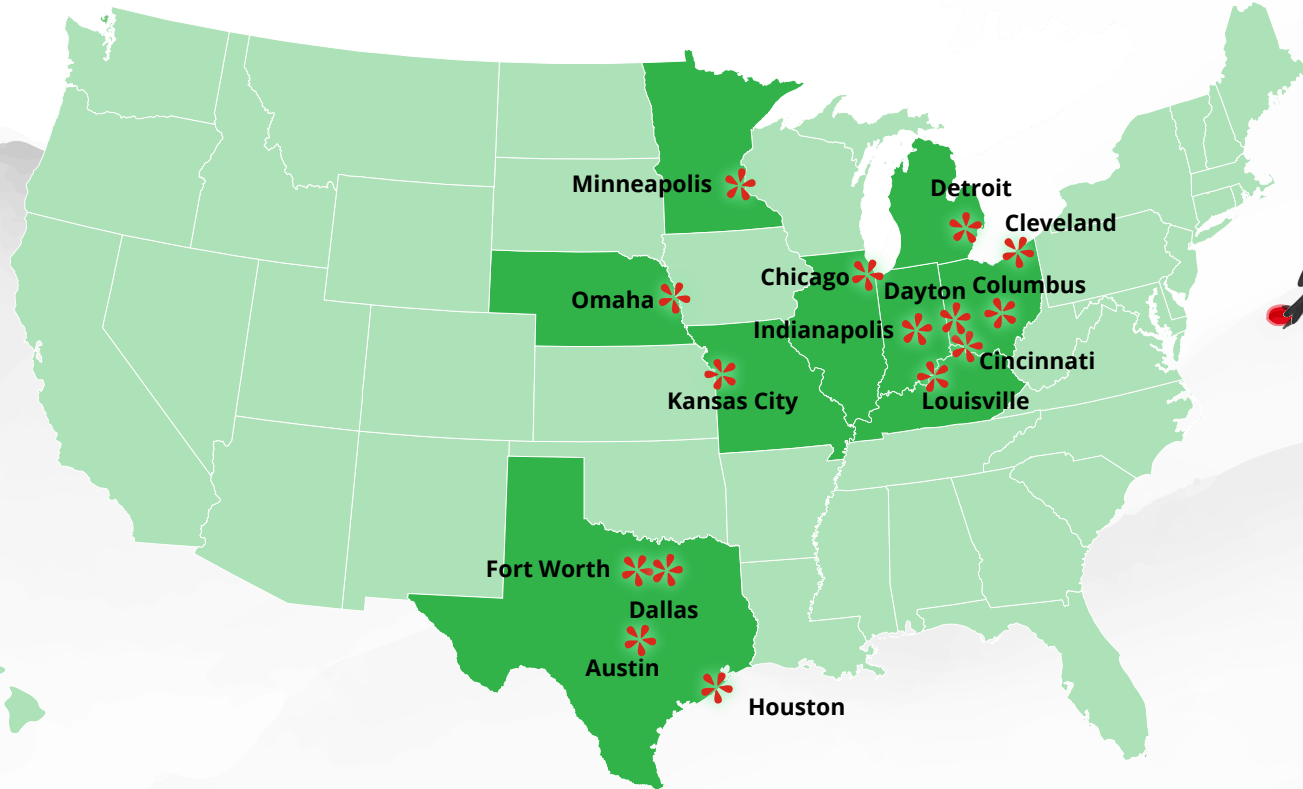
Portland

1125 NW Couch Street
Suite 600
Portland, OR 97209

San Francisco

555 Mission Street
Suite 1400
San Francisco, CA 94105

US JSG offices



Central region

Austin

500 W. 2nd Street
Suite 1600
Austin, TX 78701

Cleveland

127 Public Square
2600 Key Center, Suite 3300
Cleveland, OH 44114

Dayton

711 E. Monument Ave.
Suite 300
Dayton, OH 45402

Houston

1111 Bagby Street
Suite 4500
Houston, TX 77002

Louisville

220 W. Main Street
Suite 2100
Louisville, KY 40202

Chicago

111 S. Wacker Drive
Suite 2700
Chicago, IL 60606

Columbus

330 Rush Alley
Suite 800
Columbus, OH 43215

Detroit

1001 Woodward Avenue
Suite 700
Detroit, MI 48226

Indianapolis

111 Monument Circle
Suite 4200
Indianapolis, IN 46204

Minneapolis

50 S. 6th Street
Suite 2800
Minneapolis, MN 55402

Cincinnati

50 W. 5th Street
Suite 200
Cincinnati, OH 45202

Dallas

2200 Ross Avenue
Suite 1600
Dallas, TX 75201

Fort Worth

301 Commerce Street
Suite 2601
Fort Worth, TX 76102

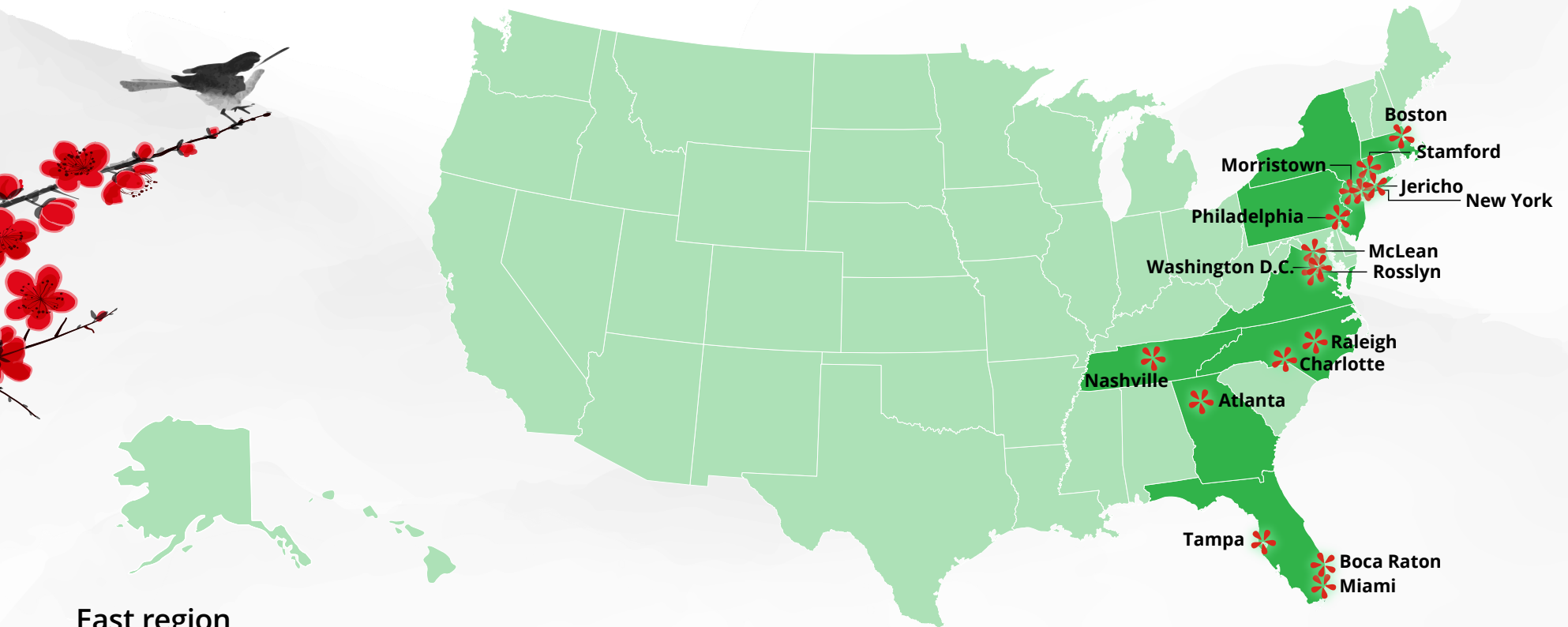
Kansas City

1100 Walnut Street
Suite 3300
Kansas City, MO 64106

Omaha

1100 Capitol Avenue
Suite 300
Omaha, NE 68102

US JSG offices



East region

Atlanta

191 Peachtree Street NE
Suite 2000
Atlanta, GA 30303

Charlotte

650 S. Tryon Street
Suite 1800
Charlotte, NC 28202

Miami

600 Brickell Avenue
Suite 3700
Miami, FL 33131

New York

30 Rockefeller Plaza
41st Floor
New York, NY 10112

Rosslyn

1919 N Lynn Street
Suite 1500
Rosslyn, VA 22209

Washington D.C.

1299 Pennsylvania Avenue NW
10th Floor
Washington, DC 20004

Boca Raton

1800 N. Military Trail
Suite 200
Boca Raton, FL 33431

Jericho

2 Jericho Plaza
3rd Floor
Jericho, NY 11753

Morristown

110 Morris Street
Morristown, NJ 07960

Philadelphia

1700 Market Street
Suite 2700
Philadelphia, PA 19103

Stamford

695 E. Main Street
6th Floor
Stamford, CT 06901

Boston

115 Federal Street
Winthrop Center
Boston, MA 20110

McLean

7900 Tysons One Place
Suite 800
McLean, VA 22102

Nashville

1033 Demonbreun
Street Suite 400
Nashville, TN 37203

Raleigh

621 Hillsborough Street
Suite 400
Raleigh, NC 27603

Tampa

201 N. Franklin Street
Suite 3600
Tampa, FL 33602

Deloitte in the United States

Largest professional services firm in the United States
in terms of revenue and headcount.



More than **150,000** -> **Nearly 173,000**
professionals including more than **6,000**
partners, principals, and managing directors



136 offices in 108 cities

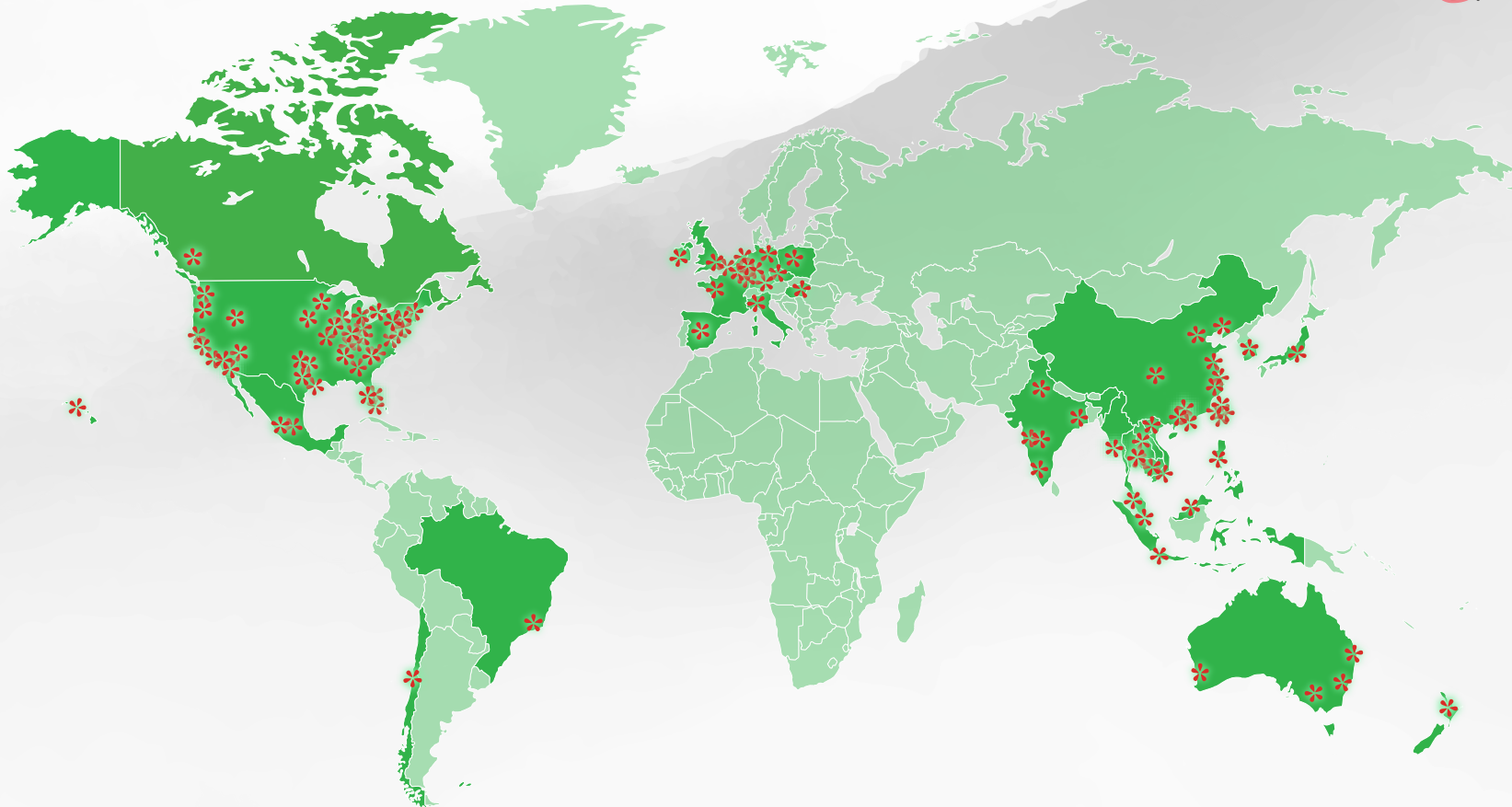


More than **\$33 billion** in revenue in FY24

Ranked 25 years on *Fortune* magazine's **100 Best Companies to Work For** and six years on **PEOPLE 100 Companies That Care** list.



Global JSG offices



Americas

Atlanta	Dayton	McLean	Salt Lake City
Austin	Detroit	Mexico City	San Diego
Boca Raton	Fort Worth	Miami	San Francisco
Boise	Honolulu	Minneapolis	San Jose (Silicon Valley)
Boston	Houston	Morristown	Santiago
Charlotte	Indianapolis	Nashville	Sao Paulo
Chicago	Jericho	New York	Seattle
Cincinnati	Kansas City	Omaha	Stamford
Cleveland	Leon	Philadelphia	Tampa
Columbus	Las Vegas	Portland	Toronto
Costa Mesa	Los Angeles	Raleigh	Vancouver
Dallas	Louisville	Rosslyn	Washington D.C.

Europe / Middle East / Africa

Amsterdam	Paris
Berlin	Prague
Brussels	Warsaw
Budapest	
Dublin	
Dusseldorf	
Frankfurt	
London	
Luxembourg	
Madrid	
Milan	
Munich	

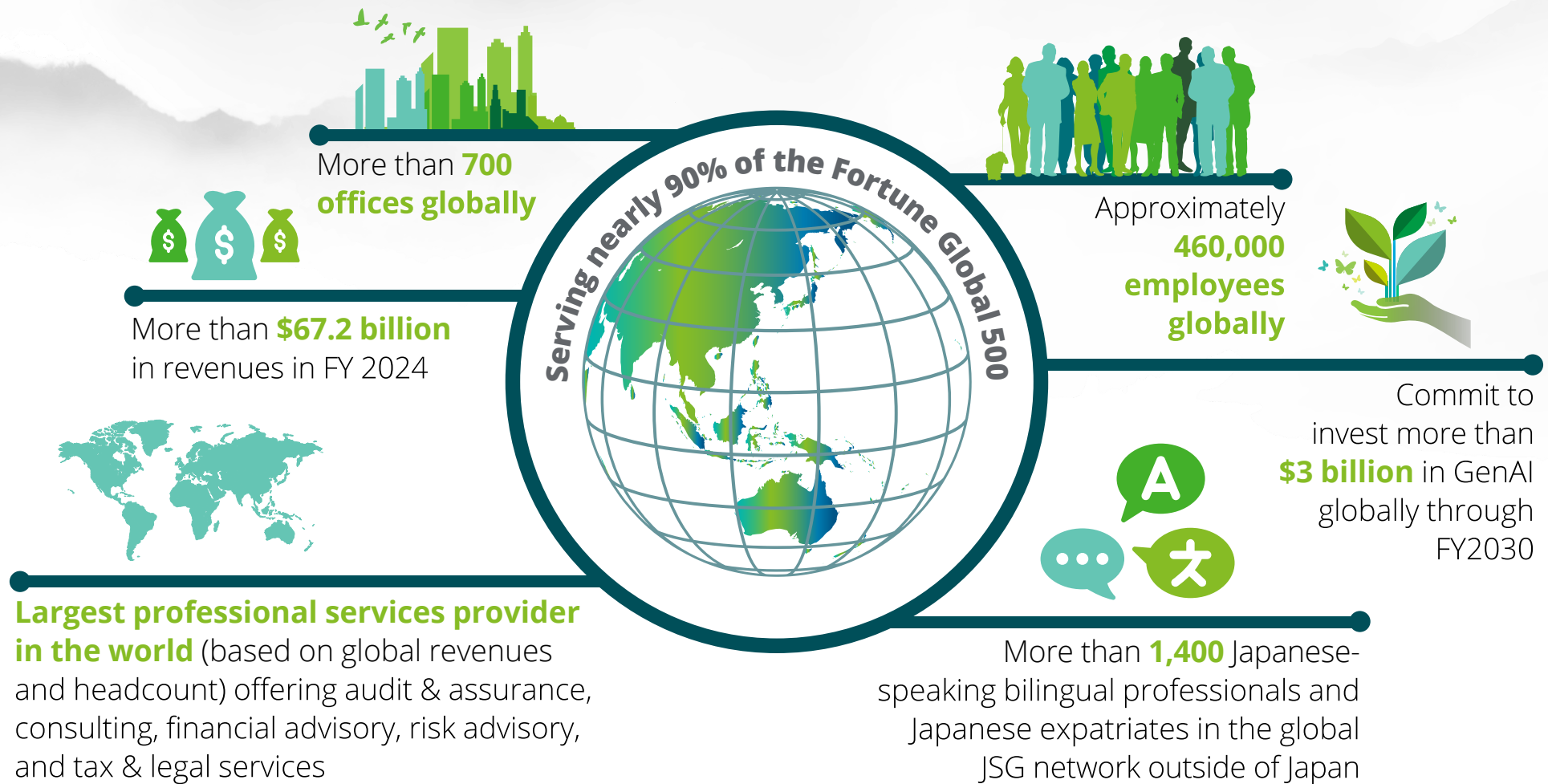
Asia-Pacific

Auckland	Hong Kong	Shenzhen
Bandar Seri Begawan	Hsinchu	Singapore
Bangkok	Jakarta	Suzhou
Beijing	Kolkata	Sydney
Bengaluru	Kaohsiung	Taichung
Brisbane	Kuala Lumpur	Tainan
Chongqing	Manila	Taipei
Coimbatore	Melbourne	Tianjin
Dalian	Nanjing	Tokyo (HQ)
Guangzhou	Pune	Vientiane
Gurugram	Perth	Yangon
Hsinchu	Phnom Penh	
Hanoi	Seoul	
Ho Chi Minh City	Shanghai	

*Tel Aviv is integrated with US by Deloitte's regional classification.

Worldwide—our global organization

Deloitte Touche Tohmatsu Limited (DTTL) is a globally connected network of member firms in more than 150 countries and territories.



Our services

Deloitte offers multidisciplinary services to help clients meet their specialized needs in many critical areas.

Consulting

- Core Business Operations
- Customer & Marketing
- Enterprise Technology & Performance
- Human Capital
- Strategy and Analytics

Tax

- Tax Operate
- Tax Legislation
- Tax Technology Consulting
- Global Employer Services
- Legal Business Services
- Tax Services



Risk & Financial Advisory

- Accounting & Internal Controls
- Cyber & Strategic Risk
- Regulatory & Legal
- Transactions and M&A

Audit & Assurance

- Audit Innovation
- Accounting Standards
- Accounting Events & Transactions

Our services

Deloitte offers multidisciplinary services to help clients meet their specialized needs in many critical areas.

M&A and Restructuring

- M&A Services
- Restructuring Services

AI & Analytics

- AI Center of Excellence
- AI Skills & Workforce Readiness
- Cultivate Evergreen Value with AI and Data
- Data Modernization & Analytics
- Data Operations Solutions
- Experience Transformation through the Power of AI
- Generative AI
- Trustworthy AI
- AI & Data Strategy Solutions



Cloud

- Application Modernization & Migration
- Cloud Analytics & AI
- Cloud Business Transformation
- Cloud Infrastructure & Engineering
- Cloud Native Development
- Cloud Operate
- Cloud Workforce & Operating Model
- Cyber & Strategic Risk
- ERP & SaaS
- Hybrid Cloud

Deloitte Private

- Family Enterprise
- Private Equity
- Emerging Growth Companies
- Private Companies

Global and US JSG network



Long history with 50 years of experience, JSG boasts its **strong network** both globally and in the United States



More than **450 professionals** in the US JSG network, including nearly **300 bilinguals**



Operating in approximately **40** US and **90** global cities



Various JSG talent initiatives for our people encouraging a **bicultural** working environment



Worldwide, more than **1,400** Japanese-speaking bilingual professionals and Japanese expatriates in the global JSG network outside of Japan

Why Deloitte JSG?



Bicultural professionals

An extensive network of bicultural and bilingual professionals—approximately 300 in the United States and 1,400 globally outside Japan



Abundant experience

Dedicated service teams with deep experience and knowledge in a wide range of industries



Global operation

Operating in approximately 40 US and 90 global major cities



Knowledge sharing

Keeping our clients informed on the most current trends and developments impacting their businesses



Dedicated leader in global collaboration

Professionals from various practice areas work together across global member firms, including Deloitte Japan, to bring a seamless client service experience

US JSG leadership



Akira Yamamoto

山本 明

US and Americas JSG Leader

米国 兼 米州JSG統括リーダー

ayamamoto@deloitte.com



Tamako Hayashi

林 玉子

US JSG Deputy Leader,

US JSG Talent & Eminence Leader

米国JSG副統括リーダー

tahayashi@deloitte.com



Koichi Iwai

岩井 浩一

**US JSG Corridor & Outbound
Leader**

米国JSGチーフ・リエゾン・オフィサー

koiwai@deloitte.com



Kathy Haines

US JSG Business & Inbound Leader,

US JSG Consulting Lead,

US JSG Risk & Financial Advisory Lead

米国JSGビジネス&インバウンドリーダー

khaines@deloitte.com





Deloitte refers to one or more of Deloitte Touche Tohmatsu Limited, a UK private company limited by guarantee ("DTTL"), its network of member firms, and their related entities. DTTL and each of its member firms are legally separate and independent entities. DTTL (also referred to as "Deloitte Global") does not provide services to clients. In the United States, Deloitte refers to one or more of the US member firms of DTTL, their related entities that operate using the "Deloitte" name in the United States and their respective affiliates. Certain services may not be available to attest clients under the rules and regulations of public accounting. Please see www.deloitte.com/about to learn more about our global network of member firms.