

Predictive Maintenance for Fixed Assets

Deloitte's approach

Table of contents

01

Imperative for
maintenance
transformation

Jump to page

3

02

Our approach
to predictive
maintenance
transformation

Jump to page

10

03

Why Deloitte?

Jump to page

19

01

Imperative for
maintenance
transformation



Why predictive maintenance?

The advent of Industrial 4.0 technology, availability of limitless data storage/computing power, and advanced analytical capabilities have unlocked the power to predict equipment failure, reduce maintenance cost, and increase asset life.

Salient benefits of predictive maintenance (PdM) include:

- Improved asset-life expectancy leading to reduced capital outlay for asset replacement
- Reduced overtime costs due to reduction of unplanned repairs
- Optimal availability of skilled maintenance technicians and operators in times of labor shortages
- Better parts management and predictability
- Better control over production/operations planning
- Improved work/life balance for maintenance team
- Improved safety of workforce due to reduced asset failures



5%-15%
reduction in facility downtime,
freeing up capacity



5%-20%
increase in labor
productivity



10%-30%
reduction in inventory levels with
5%-20% reduction in carrying costs



3%-5%
reduction in new
equipment costs

Source: Internal Deloitte analysis derived from work with clients.

Deloitte's experience

Deloitte's approach to Predictive Maintenance is grounded in 15+ projects in the smart factory and predictive analytics domains.

	Predictive maintenance for a package delivery corporation	Connected vehicle analytics of a global automotive oem	Reliability engineering techniques for a food packaging company
Issue	<p>A global package delivery company was seeing an increase in downtime at its sortation facilities, due to increased asset utilization and increased package inflow, leading to maintenance window shrinkage. Deloitte was engaged to identify and implement relevant use cases to optimize maintenance of assets across the sortation network.</p>	<p>A leading global truck manufacturer was developing its first fully connected truck ecosystem and needed help assessing use cases for applying sensor data to reduce costs, improve uptime, find new sources of revenue, and meet regulatory requirements.</p>	<p>A manufacturer of zippered plastic bags was experiencing downtime and waste due to plastic residue reducing the effectiveness of a cutting blade. They needed to know how often to perform blade cleaning in order to minimize downtime.</p>
Solution	<p>Deloitte partnered with the client to develop a well-integrated Predictive Maintenance framework consisting of IoT technologies (e.g., ultrasonic inspection devices, vibration/temperature sensors) and advanced analytics to predict and prevent imminent asset failures. This unlocked 30+ predictive and functional use cases (e.g., gearbox failure, belt damage) and was supported by a robust change management program to ensure end-user adaptation.</p>	<p>Deloitte worked with the client to develop IoT-driven fleet management dashboards to track and enhance previously paper-based operations. Deloitte identified seven use cases that addressed the OEM's four priority outcomes including tediagnosis capability to remotely diagnosis issues to reduce downtime and warranty costs associated with large failures and connected vehicle analytics that used connected vehicle data to predict quality issues and prevent recalls.</p>	<p>Deloitte data scientists applied their knowledge of reliability engineering techniques from the automotive industry to calculate probability distributions of failure patterns. Running simulations revealed that letting the machine continue to run until the next scheduled downtime was more efficient.</p>
Impact	<p>Program is estimated to drive \$100M+ in annual benefits by unlocking capacity across 150+ facilities amounting to ~4%+ overall capacity unlock.</p>	<p>Enabled development of an internal capability to securely store, analyze, and interpret machine vehicle data leading to reduction of critical component failures and engine replacements.</p>	<p>Implementation of the recommendation is expected to yield an increase in overall equipment effectiveness (OEE) by 10% on the manufacturing line and a projected increase in annual profit of \$200K per line.</p>

Lessons learned

Deloitte's insights from past PdM programs.

Start small and scale

**Plan the future-state
architecture approach
and strategy**

**Develop the
solution in
collaboration with
end users**

**Ensure support
from leadership**

**Maintain systems
integrations and
investment in
enabling technology**

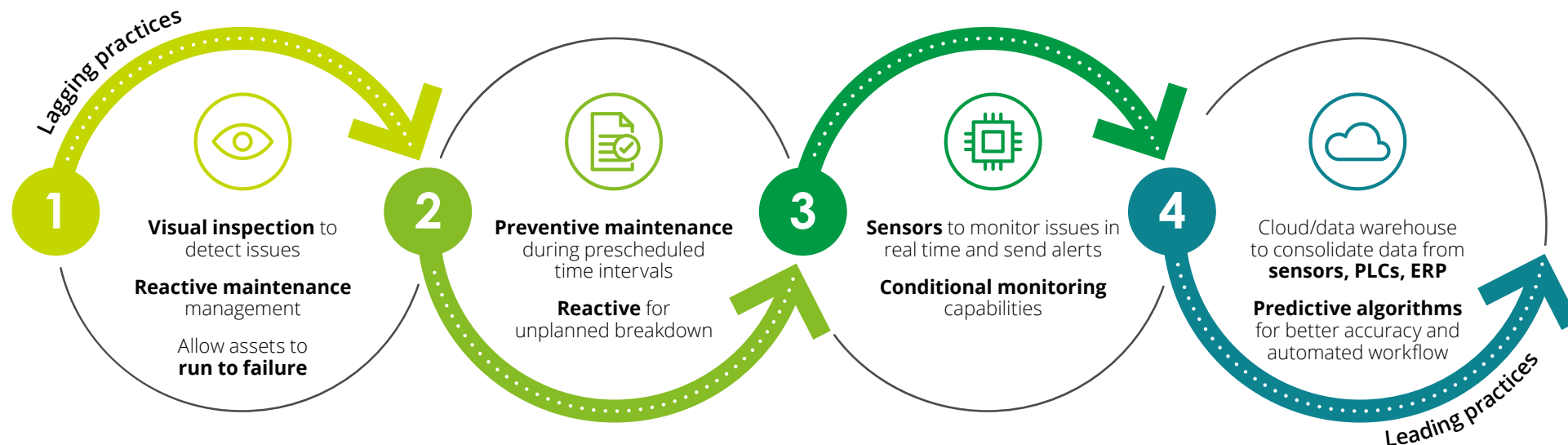
**Train end users on
tools and processes**

**Express the value and
incentivize adoption**

**Leverage lessons
from other
organizations**

Evolution of asset management

Based on our experience, well-executed predictive maintenance solutions drive substantial downtime reduction, increase productivity, and reduce overall costs



An aluminum-producing company following **reactive maintenance practices** struggled with **downtime, equipment failure, limited production, and maintenance costs***

A UK-based oil company following **preventive maintenance practices** incurred losses of more than **\$300,000** when its oil production went down by **7,500 barrels** as a result of **prolonged maintenance shutdowns**

A large US logistics company began rolling out conditional monitoring with **sensors** with an aim to **reduce downtime by 12%–15%**, but due to **increased volume, saw downtime go up**

A US multinational energy and oil company began implementing **PdM across its refineries** by using sensors to **predict when equipment will need to be serviced**, thereby **reducing maintenance cost, eliminating breakdowns, and reducing downtime**

*Industry examples to illustrate respective use cases.

Reasons behind failure of predictive maintenance implementation

Industrial automation is growing rapidly with the development of IoT technologies, reduced cost of data storage/ computing, and advancements in AI/ML capabilities. Yet, based on our experience, maintenance organizations have not been able to harness the power of these technologies beyond pilots.



Maintenance transformation: An ongoing challenge

Traditionally, companies followed either reactive or preventive methods for maintenance. Striking a balance between them is critical, and often companies fail to get it right.

Challenges with traditional maintenance

Unplanned downtime and equipment failure

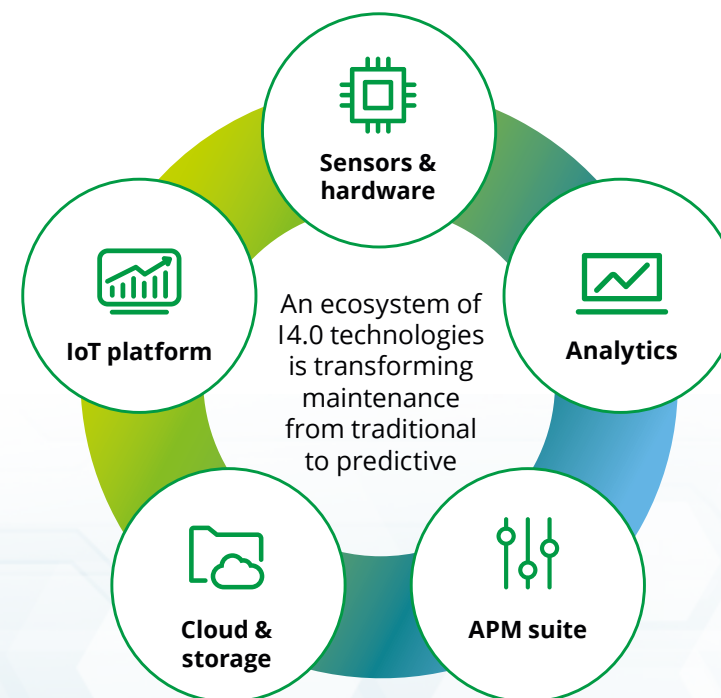
Low equipment availability

High spare parts inventory and maintenance costs

Risk to employee/public safety and environmental impacts

Increased Mean Time To Repair (MTTR) due to lack of documentation and diagnostics history

Leading practice/future vision



02

Our approach
to predictive
maintenance
transformation



PdM is at the heart of Deloitte's smart factory offering

Predictive maintenance is a critical use case for companies undergoing smart operations and factory or facility transformations. It involves the capture of real-time and historical machine health data over its life cycle to diagnose specific issues before they cause downtime.



Facility consumption and energy management

Using energy management software is like giving our planet a hug. It applies AI, ML, and motion sensors to optimize energy levels in real time, reducing consumption and overhead costs.



Smart warehousing solutions

Tackle constant pressure from both ends of the supply chain with smart warehousing solutions: AR picking, automated conveyance, and real-time process visibility. This holistic approach equals smarter planning and leaner processes.



Quality sensing and detection

Humans doing quality inspections get a helping hand from automated vision systems and real-time analytics. Smart sensors identify potential issues faster, minimizing interruptions and maximizing productivity.



Asset intelligence/performance mgmt. (predictive maintenance)

Scheduled maintenance? Not anymore, thanks to IoT, AR, and sensor-enabled monitoring. These innovations predict equipment issues before they happen, reducing unplanned downtime, unnecessary work, costs, and safety risks.



Facility synchronization and dynamic scheduling

It's the age of now, and customer expectations are high. Deliver customized products and services by using cloud computing, AI, IoT, and robotics to create highly responsive, continuously collaborative networks.



Smart conveyance

Inefficient transfer systems equals stagnant warehouse performance. Autonomously guided vehicles (AGVs), cameras, sensors, and ML/AI can optimize travel paths to deliver materials to the production line more quickly and accurately, in a saleable way.



Engineering collaboration/digital twin

Physical prototypes? Those are so 2020. Turn to digital twins for multi-physics simulations, data analytics, and ML capabilities that virtually show the impact of all variables in real-world scenarios.

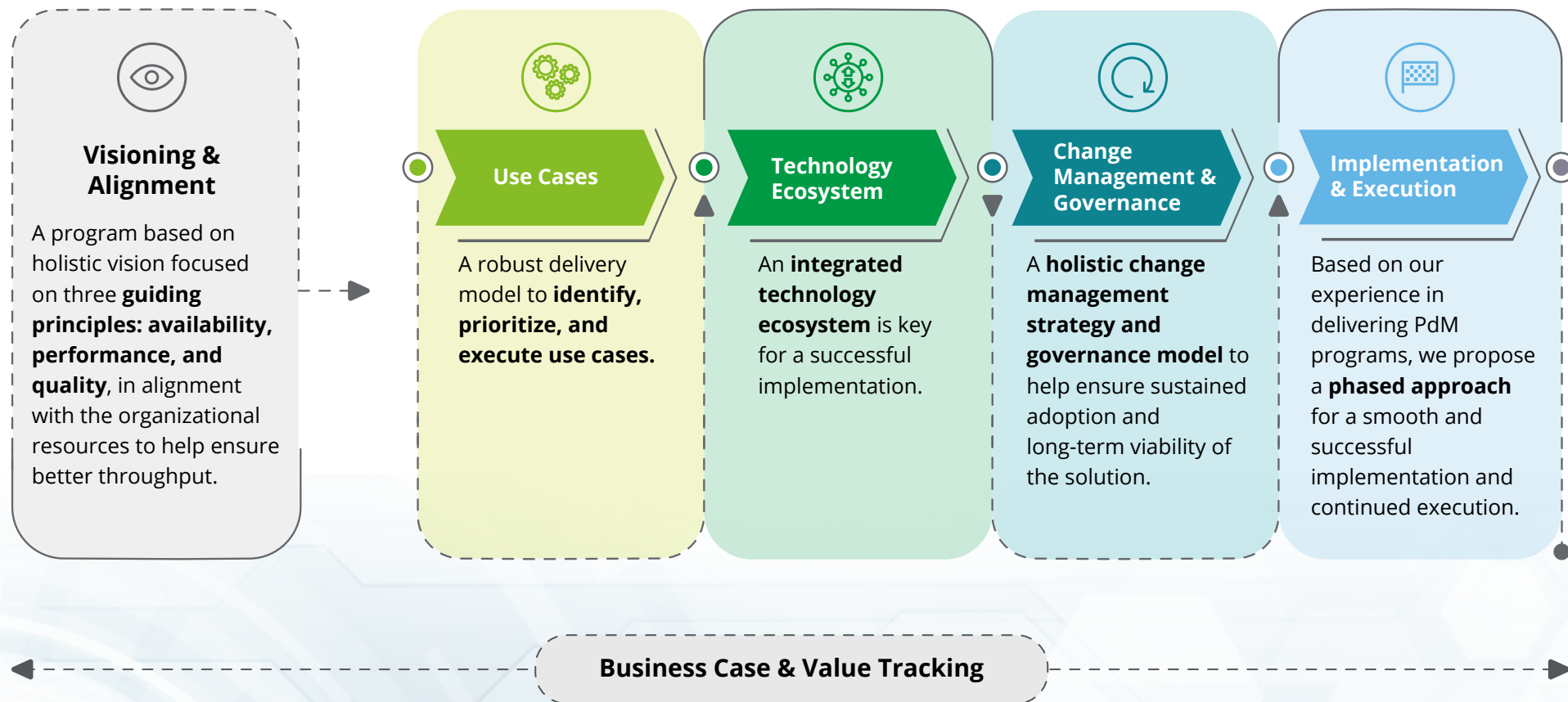


Augmented workforce efficiency

It's no longer humans vs. machines—it's humans *with* machines. Employ an augmented workforce that integrates robotics, computer vision and IoT alongside human employees to drive better outcomes, enhance productivity, and increase safety.

Proposed PdM framework

Deloitte's Predictive Maintenance framework is designed to drive a successful maintenance operations transformation



Visioning and alignment

A program based on holistic vision focused on three guiding principles: availability, performance, and quality, in alignment with the organizational resources to ensure better throughput.

PREDICTIVE MAINTENANCE VISIONING

Visioning involves communication with stakeholders in developing a shared vision of the future. With a growing business outlook, the goal should be to create a holistic, long-term vision and develop a program that can scale and adapt. At this tangent, it is imperative and profitable to reduce maintenance downtime and cost and to improve capacity utilization.



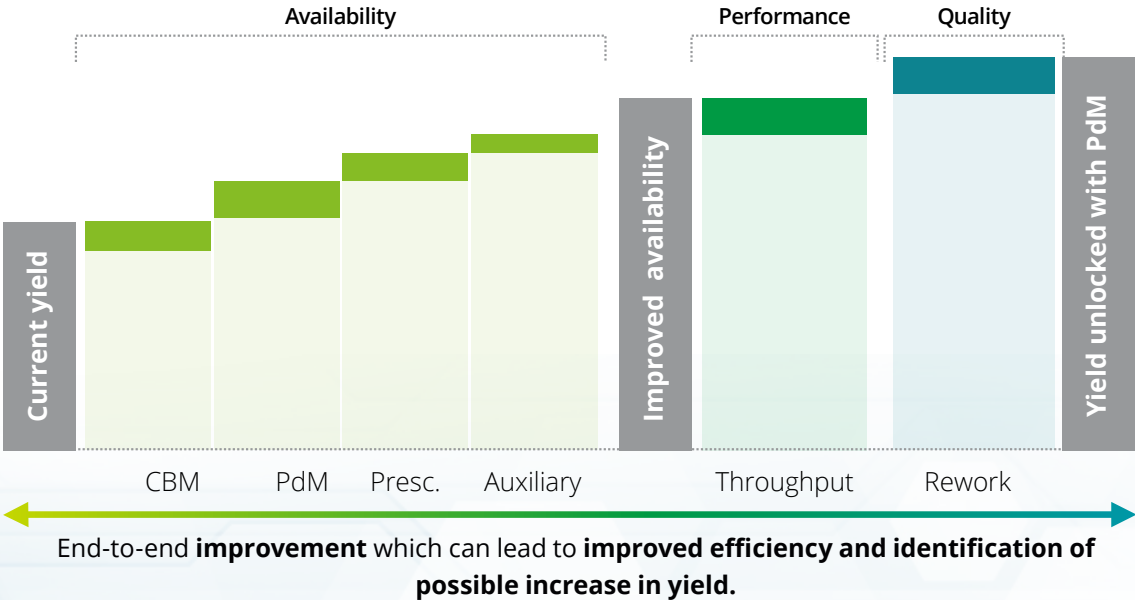
Availability: These use cases increase the amount of time that the systems are up and running. These encompass both conditional monitoring and predictive analytics use cases.



These use cases can increase the overall throughput of products. They can expand to areas that are tangential to pure predictive maintenance but will help expand the overall business case for PdM.

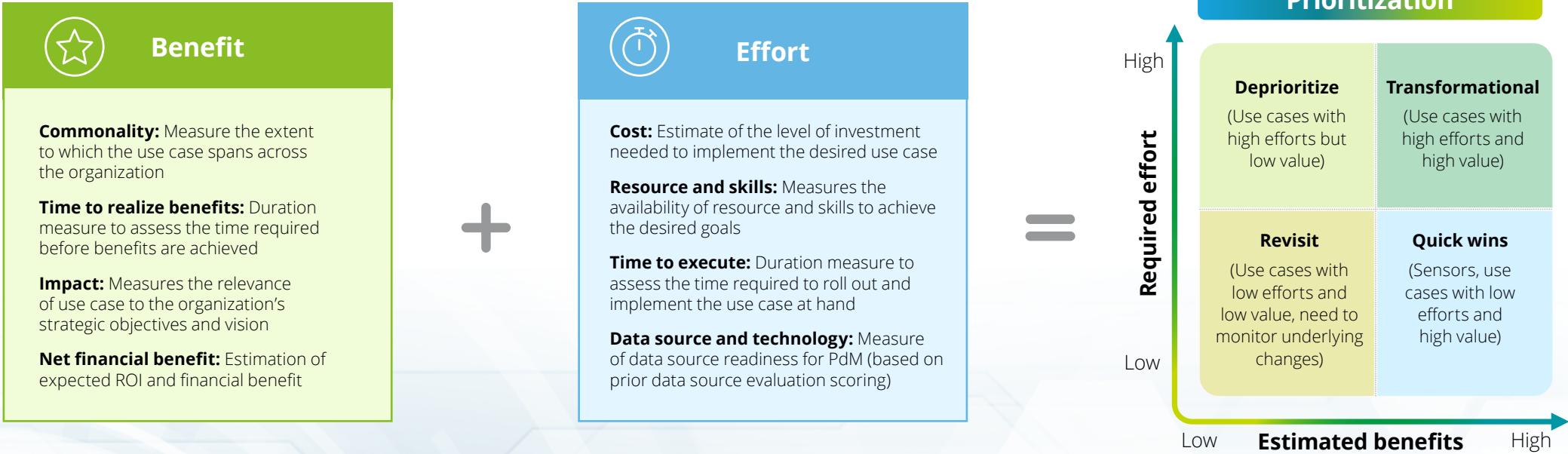
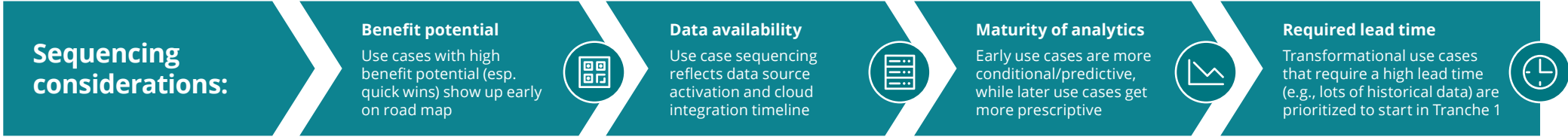


These use cases can reduce the amount of rework involved. They increase efficiency and reduce surcharges due to quality issues.



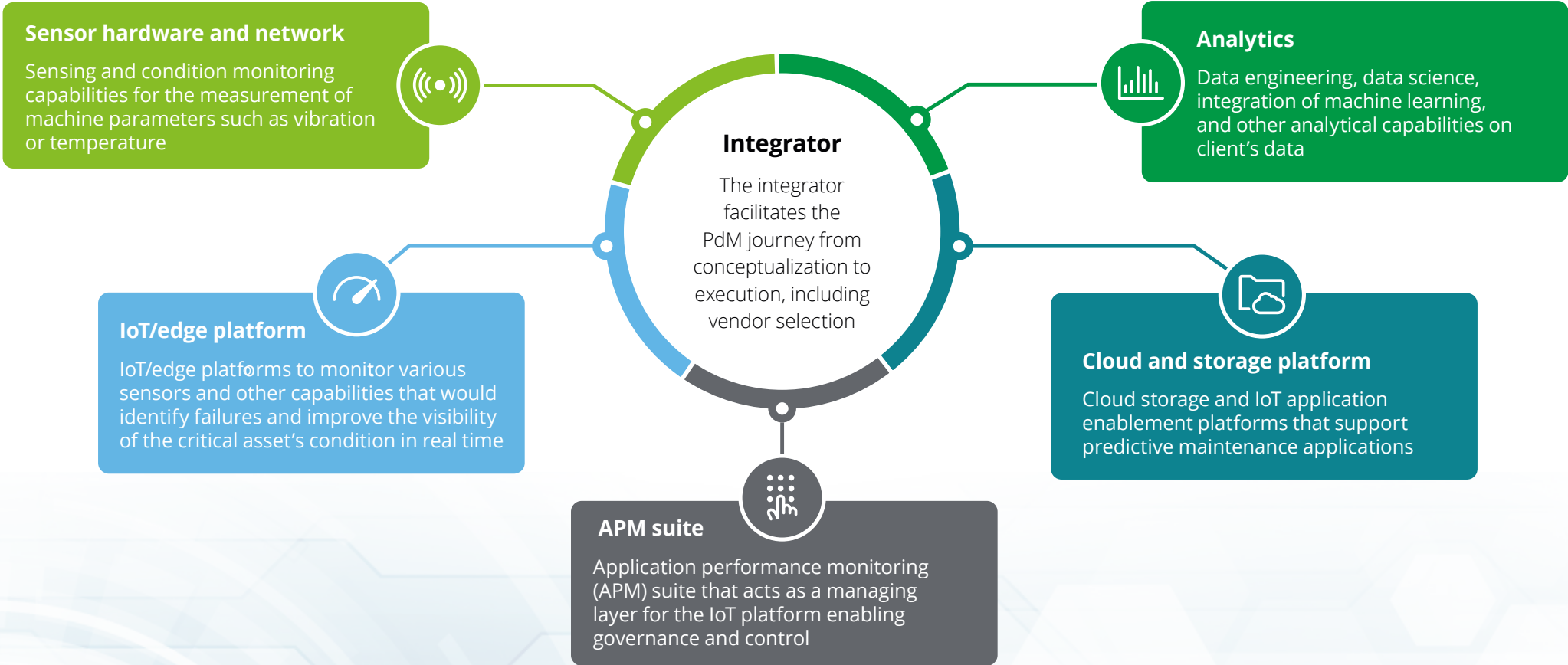
Use case sequencing recommendations

We propose a robust prioritization method based on benefits and level of effort to identify, prioritize, and execute use cases.



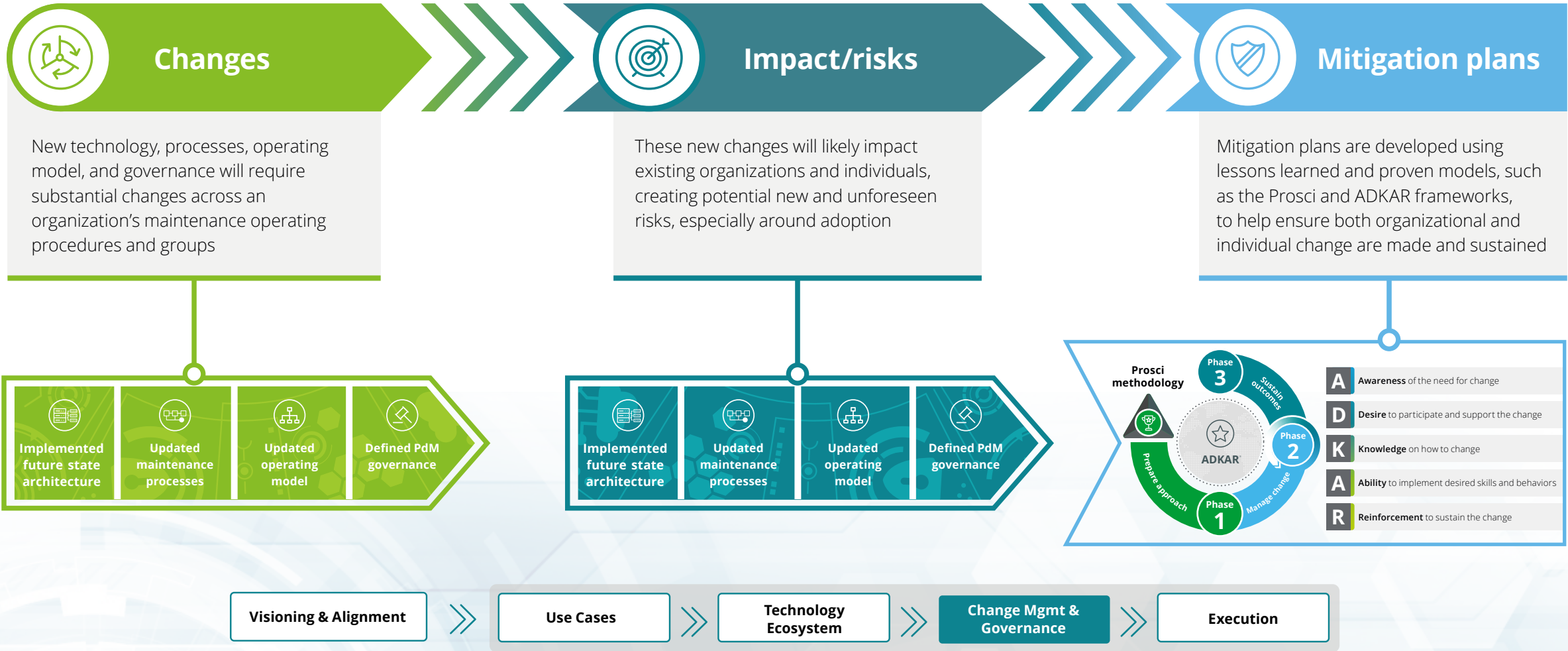
Technology ecosystem

An integrated technology ecosystem is key to successful implementation.



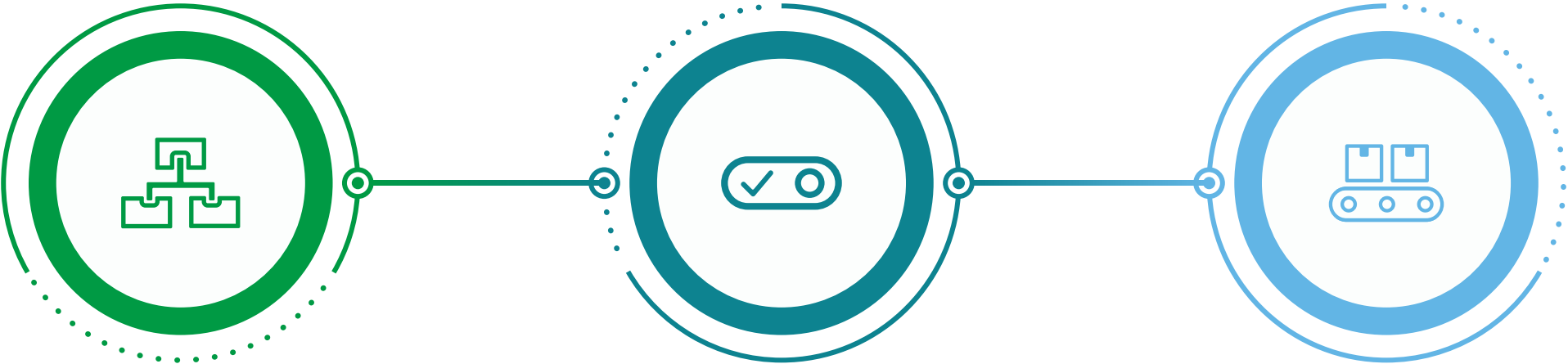
Change management

A holistic change management strategy is required to help ensure sustained adoption.



Governance structure

A holistic governance model led by a program manager can help ensure long-term viability of the solution.



Data and architecture

The data and architecture governance model can help ensure **integrations** are established and maintained, owners are identified and aligned, and data is **secure and reliable**.

Use case enablement

Leveraging a standardized use case delivery model and inputs from the field to **source, prioritize, execute, and evolve** use cases. As use cases are rolled out, value should be tracked and reported. This also includes liaisoning with the product owners to provide guidance and creating a bridge between Deloitte and project stakeholders.

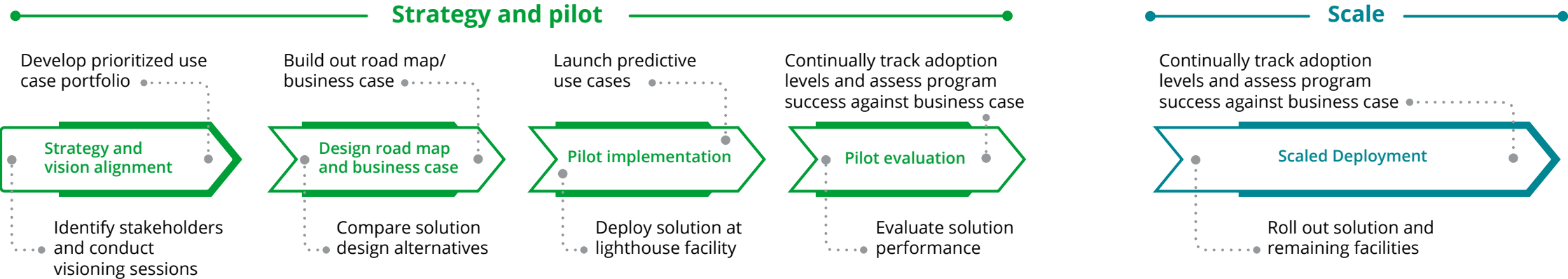
Field

The success of the PdM program will be dependent on **adoption and support** from the **field** maintenance crews. Their input is critical to the evolution of the PdM program.

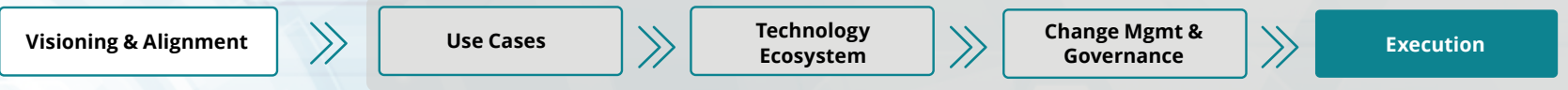
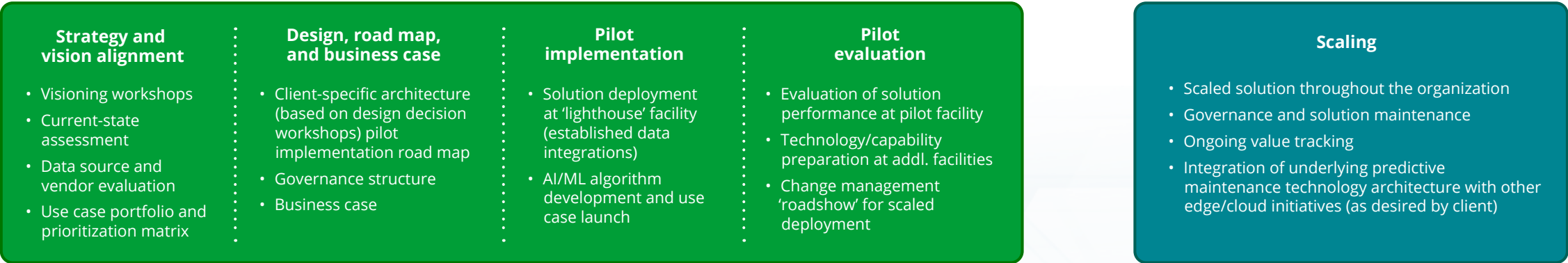


Our PdM execution approach

Our approach is “action-oriented” with a focus on quickly identifying relevant use cases, building a robust business case, executing a pilot to prove architecture, and scaling the solution broadly.



Illustrative activities and deliverables



Why Deloitte?

Deloitte brings best-in-class capabilities and solutions that illuminate the supply network; sense risks in real time; and align people, processes, technology, and governance to develop resilience and agility.



Team: Our talent model revolves around “bilingual” teams that bridge the gap between traditional business issues and cutting-edge data science. Our technical experience helped us carve out a niche in the smart factory space, catering to all our client needs.



Advanced analytics: Advanced analytics have evolved exponentially over the past few years, with problems that previously required significant effort to “solve” being addressed by these advanced techniques (such as AI optimization and machine learning, data science, CIO architecture, and architects to drive conversation with vendors and implementation of solutions).



Speed and scale: Through experience across a broad range of projects with clients we have developed a library of 30+ use cases for predictive maintenance and own a smart factory testing ground that helps us compete with industry standards. This allows us to identify the opportunities that matter most to your vision and provide insights that translate into action.



Implementation: With our prior experience, we have developed an implementation approach that starts with defining vision and strategy for the program, followed by a pilot to demonstrate feasibility and finally scaling the solution—all the while tracking benefits to help ensure speed to value.



Unique skills: We have a unique set of skills that we bring to activate the architecture, such as OT architects, cloud developers, data scientists, change management and maintenance domain specialists.



Assets and accelerators: We help client time to value using a portfolio of IoT and smart factory-specific assets, including pre-built solutions, reference architectures, custom widgets, and code repositories, which provides Agile tools and assets and embeds leading practices/standards into our implementation projects.



Tailored approach: We have alliances with leading organizations to ensure you can build a modular solution tailored to your needs.



Change management: We prioritize change management efforts because we know that people and processes are critical for ensuring adoption and long-term sustainability of the solution.

Ready to unlock the power of predictive maintenance? Contact us.



Siddharth Patil

Principal | Deloitte Consulting LLP

sipatil@deloitte.com

+1 216 502 1579

Contributors: Deloitte Consulting practitioners Dhaval Thakkar, Suhas S, Nicki Yochim, Nikhila Gandikota, and Smrithi V were instrumental in the preparation of this publication.



About Deloitte

Deloitte refers to one or more of Deloitte Touche Tohmatsu Limited, a UK private company limited by guarantee (“DTTL”), its network of member firms, and their related entities. DTTL and each of its member firms are legally separate and independent entities. DTTL (also referred to as “Deloitte Global”) does not provide services to clients. In the United States, Deloitte refers to one or more of the US member firms of DTTL, their related entities that operate using the “Deloitte” name in the United States and their respective affiliates. Certain services may not be available to attest clients under the rules and regulations of public accounting. Please see www.deloitte.com/about to learn more about our global network of member firms.