

**Deloitte.**

**Google Cloud**

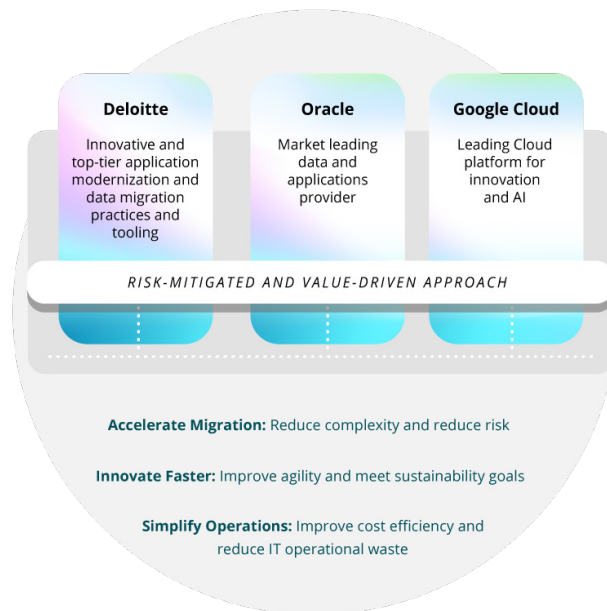
**ORACLE**

# ORACLE DATABASE@ GOOGLE CLOUD

## Unlock insights through modern infrastructure and AI

Many businesses rely on Oracle databases and applications while wanting to take advantage of Google Cloud's AI, analytics, and global infrastructure. With Oracle Database@Google Cloud, businesses can now run Oracle databases directly in Google Cloud, allowing them to benefit from both Oracle's high-performance database capabilities and Google Cloud's scalability, AI, and analytics. With the addition of Deloitte's extensive alliance relationships and proven migration factory model, organizations are empowered to maximize the potential of Oracle Database@Google Cloud, driving operational agility, innovation, and transformation.

## ORACLE AND GOOGLE CLOUD, POWERED BY DELOITTE, A UNIFIED FRAMEWORK



For organizations running Oracle on Exadata on premises, approaching a hardware refresh, or migrating their workloads to the cloud, Oracle Database@Google Cloud can help:

### **Increase flexibility**

Elastic option for right-sizing database architecture

### **Reduce complexity**

Reduces the need for complex hardware updates or additional licensing

### **Minimize risk**

Move to the cloud without changing data platforms and existing systems

### **Simplify billing**

Oracle Exadata cost is billed by Google allowing the burn down of Google commit

### **Reduce total cost of ownership**

Returns up to 25% of cloud spend as discount to annual Oracle database support

### **Drive efficiency**

Meet performance, scalability and security demands for migrated workloads

## WHY DELOITTE: A CLEAR, DIRECT PATH TO VALUE

Deloitte's extensive experience in cloud strategy and implementation helps organizations benefit from a secure, efficient, and future-ready cloud environment that supports their mission-critical operations and strategic objectives.

### Oracle and OCI experience

Global OCI practice of 3,500 practitioners serve as an implementation partner for cross platform and interconnected speed to adoption

### Google Cloud experience

With 8,000+ Google Cloud certifications, recognized as a **market leader for cloud transformation** by fortune 500

### Proprietary tools & accelerators

Mature and innovative offerings utilizing Gemini for Oracle data migration, including ATADATA, innoWake and TruNorth

### Technical and industry specialists

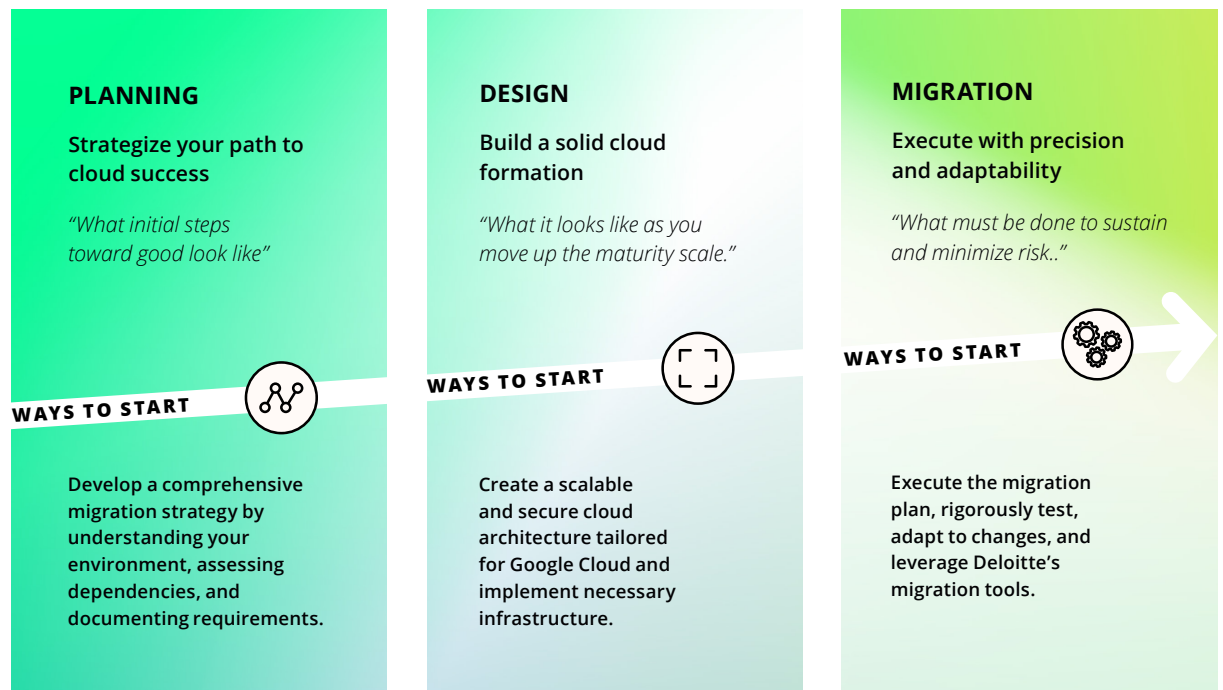
**Subject matter specialists** provide customized trainings and institutional knowledge to strengthen your team's cloud capabilities

### End-to-end lifecycle support

**Breadth of services** to support your organization's goals from strategy formulation to migration and managed services

## ACCELERATE MIGRATION: MINIMIZE RISK AND DISRUPTION

Leveraging deep functional knowledge and extensive experience in cloud migrations, Deloitte's three-step approach addresses the unique challenges of Oracle workload migrations for a smooth and effective transition.



## CONNECT WITH US

Discover how Oracle Database@Google Cloud can help your organization drive business value and increase operational efficiency.

### Kashif Rahamatullah

Principal  
Ecosystems and Alliances GTM  
Deloitte Consulting LLP  
[krahamatullah@deloitte.com](mailto:krahamatullah@deloitte.com)

### Mamoun Hirzalla

Managing Director  
Google Cloud CTO  
Deloitte Consulting LLP  
[mhirzalla@deloitte.com](mailto:mhirzalla@deloitte.com)

### Chris Pasternak

Managing Director  
Oracle CTO  
Deloitte Consulting LLP  
[cpasternak@deloitte.com](mailto:cpasternak@deloitte.com)

#### About Deloitte

This communication contains general information only, and none of Deloitte Touche Tohmatsu Limited, its member firms or their related entities (collectively, the "Deloitte Network"), is, by means of this communication, rendering professional advice or services. Before making any decisions or taking any action that may affect your finances, or your business, you should consult a qualified professional adviser. No entity in the Deloitte Network shall be responsible for any loss whatsoever sustained by any person who relies on this communication. As used in this document, "Deloitte" means Deloitte Consulting LLP, a subsidiary of Deloitte LLP. Please see [www.deloitte.com/us/about](http://www.deloitte.com/us/about) for a detailed description of our legal structure. Certain services may not be available to attest clients under the rules and regulations of public accounting.

Copyright 2025 Deloitte Development LLC. All rights reserved.