



# FastForward Talent Intelligence

*powered by Eightfold*



## What is Deloitte's FastForward Talent Intelligence powered by Eightfold?

FastForward Talent Intelligence provides organizations with a pre-configured, premier talent experience solution that can be deployed in less time, at a lower cost, with fewer resources, thereby reducing an organization's time to value. It was created from Deloitte's industry leading experience in HR transformation, talent acquisition, talent management and systems implementation.

### Why Deloitte + Eightfold:

Deloitte's FastForward Talent Intelligence is powered by Eightfold's advanced AI capabilities on their Talent Intelligence Platform, providing clients with the insights and tools needed to hire and develop people to their highest potential.

Deloitte has implemented Eightfold AI for numerous clients in over 175 countries across industries, including Consumer; Energy, Resources & Industrials; Financial Services; Life Sciences & Health Care; and Technology, Media & Telecommunications. Deloitte has also supported public sector engagements and non-profits like the OneTen organization.



**Deloitte is the #1 Global Human Capital consulting firm**



**Deloitte is Eightfold AI's largest System Integrator**



**Deloitte is the only Global SI Certified with Eightfold AI**



**Deloitte has practitioners around the globe trained to implement Eightfold AI**

## Who can FastForward help?

FastForward Talent Intelligence can help **HR leaders** that:



Want a better understanding of their employees' skills and growth opportunities

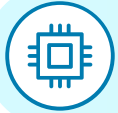


Want a premier talent intelligence solution to help recruit talent more efficiently, retain top performers, upskill and reskill their workforce



Are interested in leveraging leading practices to accelerate time to value and cost savings.

FastForward Talent Intelligence can help **IT leaders** that:



Want to take advantage of all that AI has to offer



Need a solution that can integrate with company's existing ATS and HRIS systems



Are looking for help from the leading Eightfold implementation partner

FastForward focuses on driving better outcomes...

by leveraging advanced technology, leading human-centric design & processes, and deep HR insights as reflected in Deloitte's [Global Human Capital Trends Report](#), FastForward helps drive better human performance.

Many of our clients use FastForward to accelerate implementations and improve solution quality through a baseline configuration founded on leading practices and Deloitte's next-gen process design. It's powered by accelerators such as baseline project plan, sprint plan, workshop materials, test scripts, and cutover plan.

**The new math of *human performance***

human outcomes

×

business outcomes

=

**human performance**



*FastForward works with new Talent Acquisition and Talent Management Technology implementations or can be used to enhance your existing Talent Technology solution.*

Deloitte Consulting is uniquely positioned to implement Eightfold AI in parallel with any of the market-leading enterprise solutions. FastForward accelerates concurrent implementations with other ATS and TA platforms. It can also be used to augment and optimize your investments in existing platforms.

Eightfold can take data from these systems and provide users with a single scalable, reliable platform that can rationalize data into action and insights that drive and align talent and business strategies.

\*Deloitte's 2024 Human Capital Trends Report

FastForward Talent Intelligence helps organizations realize the following benefits:



Earlier time to value with a pre-configured solution saving about one-third the implementation time and costs



Opportunities for early deployment with Candidate Relationship Management or Talent Management functionality



HR leaders obtain a clear understanding of workforce skills benchmarked to industry standards, competitors and other companies



HR leaders easily access reports on talent growth, mobility, efficiency, and experience



Hiring managers are provided insights needed to engage in strategic discussions with recruiters about talent needs



Hiring managers provide input that will help adjust the candidate pool with internal and external candidates to find the best fit



Recruiters get deep insights across the internal and external talent ecosystem to identify potential candidates



Employees get transparency to identify the skills required for future roles and access to an upskilling ecosystem of learning, projects, jobs, and mentors to help them achieve their goals



Employees can be considered for new roles based on skills and potential, and not just based on traditional career paths



Candidates are easily matched to opportunities based on skills versus traditional keywords / filters



Candidates are provided transparent AI insights to their skills match, increasing candidate completions and the diversity of candidate pools



How FastForward Talent Intelligence powered by Eightfold AI helps organization’s solve challenges throughout the talent lifecycle:



### SOURCE & ASSESS

- Increase **number of candidates** by over **300%** <sup>2</sup>
- Increase **candidate application completion** rate by **90%** <sup>2</sup>
- Lessen **bias in recruitment process** through skills-based decision-making

### HIRE & ONBOARD

- Increase **hiring of women** by **19%** <sup>1</sup>
- Drop **time to fill a job** by **30%** <sup>2</sup>

### GROW & DEVELOP

- Increase in **personalized employee development** and **matching internal candidates** to roles resulting in increased retention rate
- Increase **progress toward organization-wide talent goals** because of transparent monitoring and insights

1) [Eightfold Bias and Diversity Case Study](#)  
2) Eightfold success metric

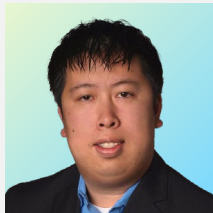
## CONTACTS



**[Sona Manzo](#)**  
Eightfold Alliance Sponsor,  
Consulting Managing Director,  
Deloitte Consulting LLP  
415.922.5736



**[John Dilworth](#)**  
Eightfold Leader & Advisor  
Senior Manager, Deloitte  
Consulting LLP  
253.394.1545



**[Tuan Le](#)**  
Eightfold Leader & Advisor  
Senior Manager, Deloitte  
Consulting LLP  
847.924.8935



**[Chris Frey](#)**  
Vice President Sales,  
Deloitte Consulting LLP  
704.421.8442

This document contains general information only and Deloitte is not, by means of this document, rendering accounting, business, financial, investment, legal, tax, or other professional advice or services. This document is not a substitute for such professional advice or services, nor should it be used as a basis for any decision or action that may affect your business. Before making any decision or taking any action that may affect your business, you should consult a qualified professional advisor. Deloitte shall not be responsible for any loss sustained by any person who relies on this document.

All product names mentioned in this document are the trademarks or registered trademarks of their respective owners and are mentioned for identification purposes only. Deloitte is not responsible for the functionality or technology related to the vendor or other systems or technologies as defined in this document.

As used in this document, 'Deloitte' means Deloitte Consulting LLP, which provides strategy, operations, technology, systems, outsourcing and human capital consulting services; and Deloitte Transactions and Business Analytics LLP, which provides risk and financial advisory services, including eDiscovery and analytics services. These entities are separate subsidiaries of Deloitte LLP. Please see [www.deloitte.com/us/about](http://www.deloitte.com/us/about) for a detailed description of our legal structure. Certain services may not be available to attest clients under the rules and regulations of public accounting.

Copyright © 2024 Deloitte Development LLC. All rights reserved.