

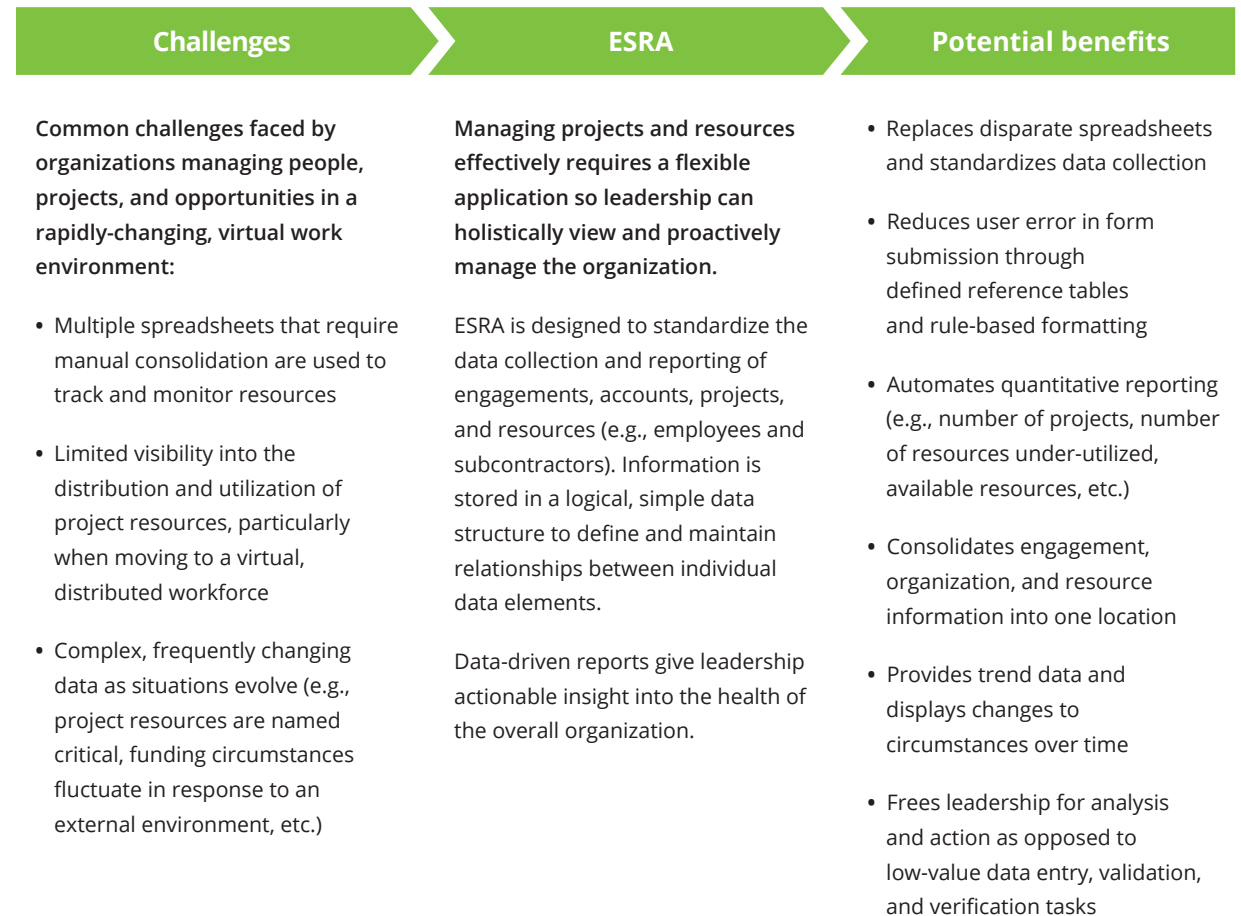
servicenow™

Deloitte.



# Employee Status Reporting Application (ESRA)

Deloitte's Employee Status Reporting Application (ESRA) is designed to standardize resource management and project status in a simple user interface that enables organizations to track, monitor, and report on engagements, accounts, and resources over time.



## Contacts

### Edward Rollins

Managing Director  
erollins@deloitte.com  
Deloitte Consulting LLP

### Bev McDonald

Specialist Executive  
bmcdonald@deloitte.com  
Deloitte Consulting LLP

### Joe Mills

Sales Executive  
jomills@deloitte.com  
Deloitte Services LLP

**Learn how we can help:**  
[deloitte.com/us/ServiceNow](https://deloitte.com/us/ServiceNow)



## APPLICATION CAPABILITIES

ServiceNow manages the data collection of engagement and employee information, enabling reporting from one centralized data set

### Centralized data entry

Managers enter information for accounts, engagements, and personnel in easy-to-use forms that enforce consistent formatting and validation

— — — >  
**ENABLES**



### Account and engagement health monitoring

Leaders view current state of accounts and engagements through real-time reports to make data-driven decisions



### Resource management reporting

Leaders and managers gain insight into real-time resource management through staffing allocation and workload assignment reports



### Trend analysis

Leaders gain insight into engagement and resource trends through changes to data displayed over time

## WHY DELOITTE AND SERVICENOW?

Deloitte helps our clients enhance business outcomes by leveraging ServiceNow as an end-to-end digital workflow platform. We don't just leverage ServiceNow to automate your current processes: We reimagine how work gets done, delivering material improvements in revenue and cost reduction with higher job satisfaction. As a leading Global Systems Integrator and ServiceNow's Global Transformation Partner of the Year, Deloitte applies its breadth of industry and technology experience to help clients extract value from this powerful technology to create a united workflow with one platform.

As used in this document, "Deloitte" means Deloitte Consulting LLP, a subsidiary of Deloitte LLP. Please see [www.deloitte.com/us/about](https://www.deloitte.com/us/about) for a detailed description of our legal structure. Certain services may not be available to attest clients under the rules and regulations of public accounting.

This publication contains general information only and Deloitte is not, by means of this publication, rendering accounting, business, financial, investment, legal, tax, or other professional advice or services. This publication is not a substitute for such professional advice or services, nor should it be used as a basis for any decision or action that may affect your business. Before making any decision or taking any action that may affect your business, you should consult a qualified professional advisor. Deloitte shall not be responsible for any loss sustained by any person who relies on this publication.

Copyright © 2020 Deloitte Development LLC. All rights reserved.