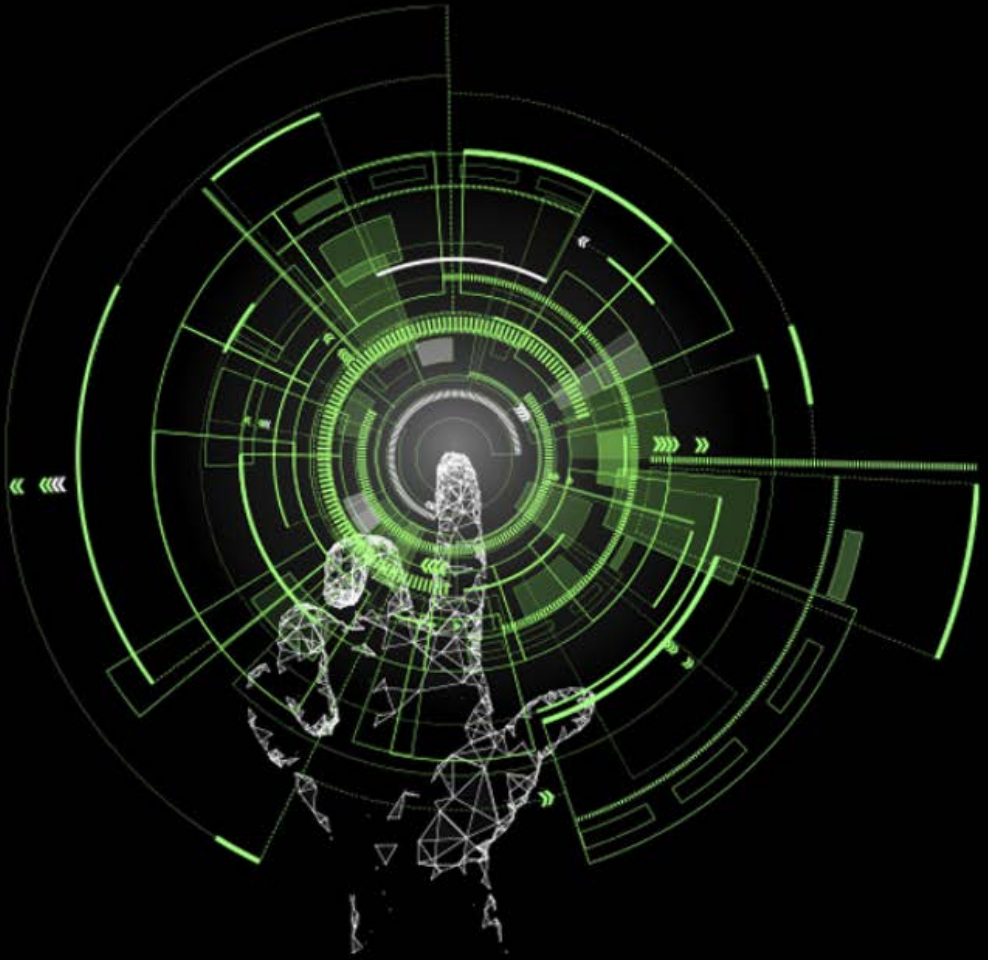


**Deloitte.**



**Deloitte Forensic**

Predict. Detect. Respond.

In the face of increasing regulation and technology-fueled corruption, including the emerging complexities of cryptocurrency markets, threats to the reputation and value of businesses have never been more widespread.

Deloitte harnesses the transformative power of AI and blockchain analytics in its problem-solving approach, becoming a global leader in forensic, dispute, and data advisory services. By providing integrated solutions powered by advanced analytics, AI-driven insights, and capabilities to analyse unstructured data, Deloitte adeptly navigates clients through the intricacies of financial crime, cryptocurrency-related controversies, and legal department crises and challenges.

This approach ensures a robust defense against the evolving landscape of digital threats and regulatory demands.



**Financial  
Crime Advisory**

Protect your brand and reputation by proactively identifying financial crime exposure.



**Forensic Digital,  
Analytics & Solutions**

Quickly and efficiently address the broad spectrum of challenges and plan for the future.



**Discovery & Data  
Governance**

Intelligently address current matters in a cost-effective manner that is designed to withstand scrutiny.



**Disputes &  
Litigation**

Gain objective and robust independent insight/advice to help in the resolution and avoidance of disputes.



**Investigations**

Act quickly and confidently when faced with regulatory concerns or suspected fraudulent activity.

---

# Financial Crime Advisory

We help companies protect their brand and reputation by advising on fraud exposure, corruption, money laundering and other financial business risk issues. Using our global network of intelligence analysts and advanced analytics & AI technology, we quickly and efficiently gain an understanding of exposures and provide useful and actionable advice to clients.

Deloitte provides D&L services primarily through its forensic Advisory practice, which includes investigations and investigations analytics, their discovery business, business intelligence, and dispute & litigations.

**ALM Intelligence**  
**Disputes and Litigation Consulting 2017**

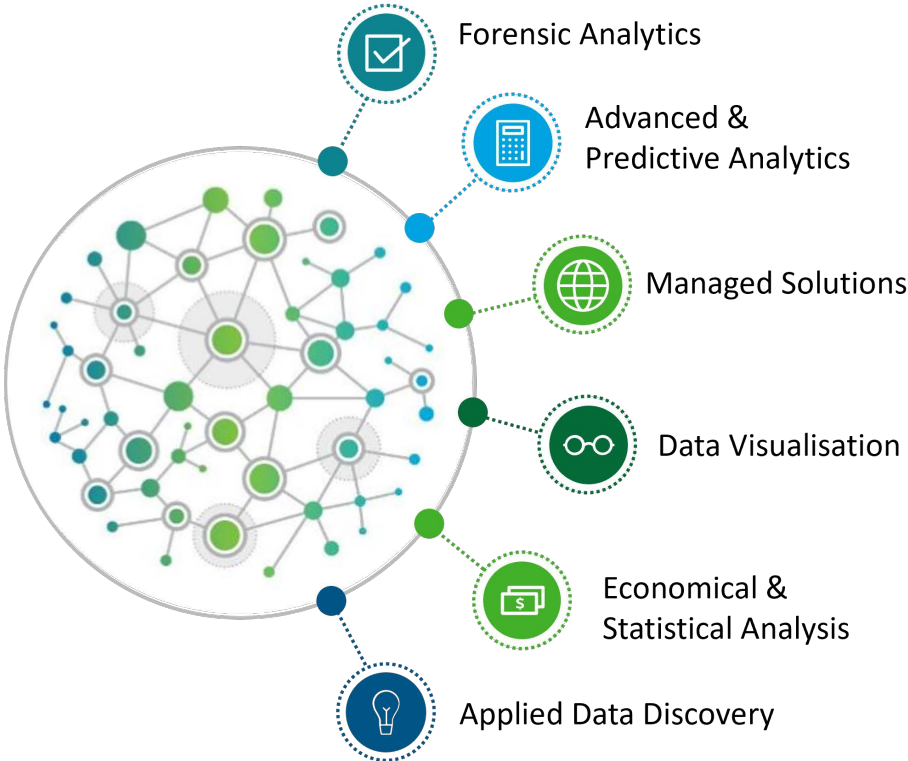


# Forensic Digital, Analytics & Solutions

We use advanced analytics and technical expertise to deliver a distinctive and valuable digital experience. We deploy sophisticated technology and analytics solutions to help clients address critical events and to detect inefficiencies and anomalies in their systems, targeting cost recovery and identifying potential risks or issues.

Deloitte named a leader in the Gartner Magic Quadrant for Data and Analytics Services 2022 (including AI) – for the 8th time!

**Gartner, Magic Quadrant for Business Analytics Services, Worldwide, 2022**



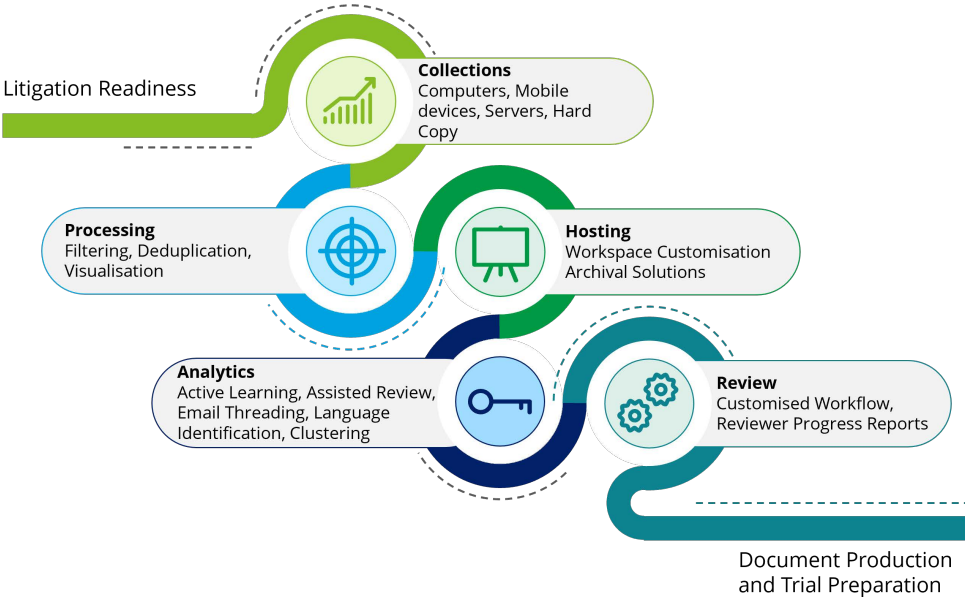
# Discovery & Data Governance

Deloitte's global industry and technology experience combined with our Forensic Digital & Analytics platforms, yields a more intelligent approach to discovery and unstructured data reviews. Our insight into our client's data universe enables us to address current needs on matters in a cost-effective manner that is designed to withstand scrutiny, and establishes a robust and repeatable process for the future. This insight also provides the platform to holistically understand our client's data footprint thereby "maximising outcomes" for data remediation.



Deloitte named a Leader in Worldwide Discovery Services by IDC MarketScape and has been listed as having the largest market presence of the Big Four.

**IDC MarketScape:  
Worldwide Discovery Services 2021 Vendor Assessment**



# Disputes & Litigation

We work with businesses and their legal advisers on various types of disputes, in different jurisdictions and many industries. Drawing on our deep expert witness, financial analysis, damage quantification, and discovery capabilities, we can provide a host of services throughout various stages of a business dispute.

“Deloitte named a global leader in Disputes and Litigation Consulting based on breadth and depth of capabilities by ALM Intelligence.”

**ALM Intelligence;  
Disputes and Litigation Consulting 2017**



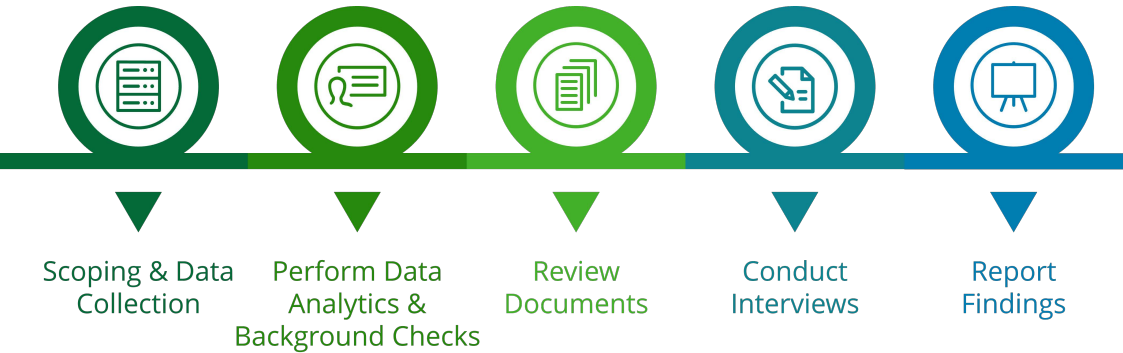
# Investigations

We help clients act quickly and confidently in the face of regulatory concerns and actions, or sensitive internal investigations into fraud, corruption and misconduct. Our global network allows us to combine an understanding of local business cultures and regulatory issues to find a successful resolution, and leave the client better-prepared to protect their assets and reputation.

Deloitte's dTrax won the category for Intelligent Contracting at the FT Intelligent Business Awards 2019. dTax is an AI-enabled tool that stores and manages contract negotiation and creation, and saved 60 per cent of legal costs for managing each contract for Deloitte's tax team.

FT: Intelligent Business Awards 2019

11



# Caribbean & Bermuda Countries (CBC)

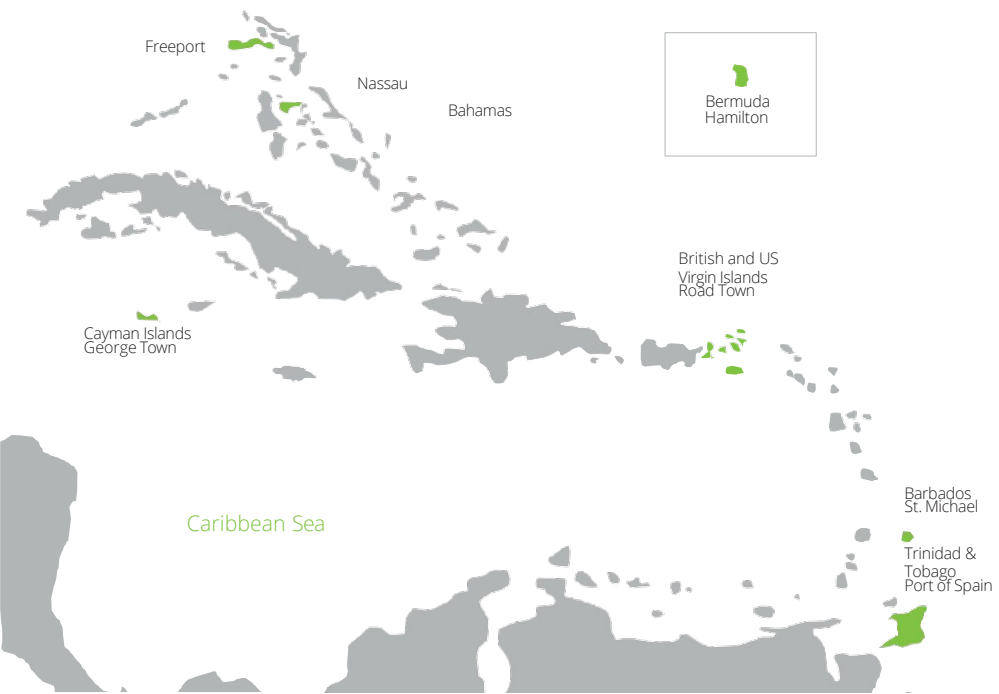
Deloitte CBC primarily serves businesses located or with interests in the English-speaking Caribbean. We have extensive expertise and knowledge of a variety of industries and sectors, with a specialist focus on financial services; tourism & hospitality; the public sector; technology, media & telecommunications; and energy & resources. We assist clients on many matters including complex, multi-jurisdictional litigation; insolvency proceedings; and investigation and asset recovery projects. Our clients include banks, hedge funds, captive, and re-insurance companies; corporate service providers and special purpose vehicle companies; energy companies; utility companies; and public sector entities including law enforcement and regulatory authorities. Deloitte CBC has over 500 staff with offices in the key jurisdictions of the Bahamas, Barbados, Bermuda, the British and US Virgin Islands, the Cayman Islands, and Trinidad & Tobago.

Our Financial Advisory professionals in the CBC region have diverse backgrounds and significant experience in assisting companies with their complex issues such as mergers and acquisitions, fraud, litigation, restructuring, and insolvency.

# Projects across the Caribbean

Our projects utilise one or many of the Forensic service lines, and are spread across different countries and time zones within the CBC. Key projects include:

- Data processing and platform services for complex liquidations.
- Providing liquidation, investigation and discovery services to a regional bank.
- Assisting a law enforcement agency on a large-scale, multinational fraud.



# Our contacts



**Nick Kedney**  
**Partner**  
**Cayman Islands**  
+1 345 743 6287  
[nkedney@deloitte.com](mailto:nkedney@deloitte.com)



**Mark Munnings**  
**Partner**  
**The Bahamas**  
+1242 302 4850  
[mmunnings@deloitte.com](mailto:mmunnings@deloitte.com)



**Timothy Derksen**  
**Partner**  
**Cayman Islands**  
+1 345 814 3344  
[tderksen@deloitte.com](mailto:tderksen@deloitte.com)



**Tiphany Russell**  
**Partner**  
**The Bahamas**  
+1 242 302 4838  
[trussell@deloitte.com](mailto:trussell@deloitte.com)



**Elizabeth Cava**  
**Partner**  
**Bermuda**  
+1 441 299 1397  
[elizabeth.cava@deloitte.com](mailto:elizabeth.cava@deloitte.com)



**Raymond Haynes**  
**Partner**  
**Barbados**  
+1 246 620 6449  
[rhaynes@deloitte.com](mailto:rhaynes@deloitte.com)



**Rikhi Rampersad**  
**Partner**  
**Trinidad & Tobago**  
+1 868 224 8416  
[rampersad@deloitte.com](mailto:rampersad@deloitte.com)



**Ryan Jarvis**  
**Partner**  
**British Virgin Islands**  
+1 284 394 2864  
[rjarvis@deloitte.com](mailto:rjarvis@deloitte.com)



**John White**  
**Director**  
**Cayman Islands**  
+1 345 743 6249  
[jwhite@deloitte.com](mailto:jwhite@deloitte.com)

For more information, please contact  
[www.deloitte.com/cbc](http://www.deloitte.com/cbc)



# Deloitte.

Deloitte refers to one or more of Deloitte Touche Tohmatsu Limited (“DTTL”), its global network of member firms, and their related entities (collectively, the “Deloitte organization”). DTTL (also referred to as “Deloitte Global”) and each of its member firms and related entities are legally separate and independent entities, which cannot obligate or bind each other in respect of third parties. DTTL and each DTTL member firm and related entity is liable only for its own acts and omissions, and not those of each other. DTTL does not provide services to clients. Please see [www.deloitte.com/about](http://www.deloitte.com/about) to learn more. Deloitte & Touche LLP is an affiliate of DCB Holding Ltd., a member firm of Deloitte Touche Tohmatsu Limited.

Deloitte provides industry-leading audit and assurance, tax and legal, consulting, financial advisory, and risk advisory services to nearly 90% of the Fortune Global 500® and thousands of private companies. Our professionals deliver measurable and lasting results that help reinforce public trust in capital markets, enable clients to transform and thrive, and lead the way toward a stronger economy, a more equitable society and a sustainable world. Building on its 175-plus year history, Deloitte spans more than 150 countries and territories. Learn how Deloitte’s approximately 415,000 people worldwide make an impact that matters at [www.deloitte.com](http://www.deloitte.com).

This communication contains general information only, and none of Deloitte Touche Tohmatsu Limited (“DTTL”), its global network of member firms or their related entities (collectively, the “Deloitte organization”) is, by means of this communication, rendering professional advice or services. Before making any decision or taking any action that may affect your finances or your business, you should consult a qualified professional adviser.

No representations, warranties or undertakings (express or implied) are given as to the accuracy or completeness of the information in this communication, and none of DTTL, its member firms, related entities, employees or agents shall be liable or responsible for any loss or damage whatsoever arising directly or indirectly in connection with any person relying on this communication. DTTL and each of its member firms, and their related entities, are legally separate and independent entities.