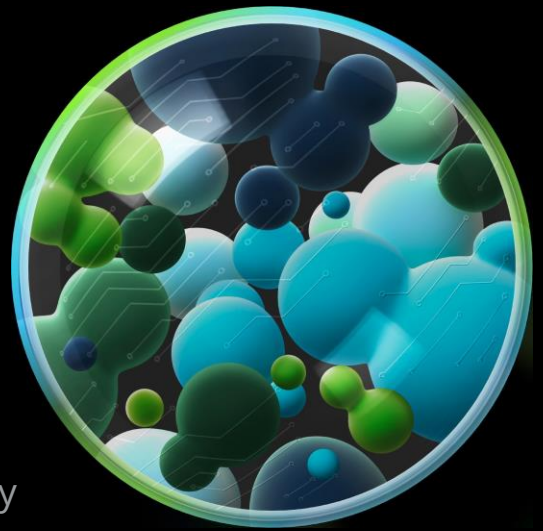


# Deloitte.

## Audit & Assurance

### Commercial Insurance and Reinsurance



Deloitte Bermuda — Putting an unrivaled diversity of talent, skills, experience, and insight to work.

Deloitte's insurance group brings together specialists from actuarial, risk, technology, tax and audit. These skill sets, combined with deep industry knowledge, allow us to provide a breadth of services to life insurers, property and casualty reinsurers, insurance broker clients, as well as many special purpose entities involved in risk transformations and distribution.

#### Maximising Stakeholder Value

Deloitte Bermuda provides financial statement audits and other services covering all classes of insurers writing all lines of business. We have over 70 professionals and 8 partners dedicated to serving the insurance industry in our Bermuda office. Deloitte's leadership in serving the global insurance industry means our professionals have the specialized knowledge that is critical to addressing challenges, and we have the bench strength of industry-experienced professionals to serve you into the future.

Deloitte Bermuda works hand-in-hand with our global network in delivering

world class service to the insurance and reinsurance industry.

#### Our Services

- Financial statement audits under US GAAP, IFRS and BMA rules
- Accounting advisory services including complex consultations
- Actuarial services
- Tax services
- Internal audit
- M&A and valuation
- Regulatory services

#### Global Strength. Local Delivery.

Our global insurance practice includes nearly 18,000 professionals and more than 800 dedicated partners and directors. Deloitte in Bermuda and in The Virgin Islands serves 90 percent of the top 20 global insurance companies (as ranked by market capitalization) and our global financial services industry practice includes 94,000 professionals with more than 4,000 dedicated partners in more than 40 countries.

# Deloitte Commercial Insurance Team



**Anna Burns**

Partner

+ 1 441 299 1396

[anna.burns@deloitte.com](mailto:anna.burns@deloitte.com)

Anna Burns is the Audit Leader for the Deloitte member firm serving the Caribbean and Bermuda Countries. She is the lead engagement partner and signing partner for SEC registered, global (re)insurers managing several Deloitte teams globally to deliver the audit.



**Stephen Kuzyk**

Partner

+ 1 441 299 1370

[stephen.kuzyk@deloitte.com](mailto:stephen.kuzyk@deloitte.com)

Stephen Kuzyk is a Partner with responsibility for Risk Advisory and Consulting Services. Stephen has experience in serving property/casualty insurers and reinsurers, banks and other investment management companies.



**Muhammad Khan**

Partner

+ 1 441 299 1357

[muhammad.khan@deloitte.com](mailto:muhammad.khan@deloitte.com)

Muhammad Khan is a Partner in the Audit Insurance department and has experience in public accounting with specialization in the reinsurance industry. Muhammad serves a wide array of assurance clients including captive reinsurance companies and alternative investments entities.



**Beth Cava**

Partner

+ 1 441 299 1397

[elizabeth.cava@deloitte.com](mailto:elizabeth.cava@deloitte.com)

Beth Cava is an Assurance Partner who specializes in financial services industry servicing the asset management, fund administration and reinsurance sectors. Her insurance experience includes serving large SEC registrants with responsibility for their annual and quarterly filings.



**Helder Carreiro**

Partner

+1 441 299 1308

[heldar.carreiro@deloitte.com](mailto:heldar.carreiro@deloitte.com)

Helder Carreiro is an Audit Partner experienced in public accounting with specialization in the reinsurance industry, including serving as audit partner and engagement quality control reviewer on numerous commercial and captive insurers.



**Jimmy Caplice**

Partner

+1 441 298 1116

[jimmy.caplice@deloitte.com](mailto:jimmy.caplice@deloitte.com)

Jimmy Caplice is a Partner specializing in providing audit and advisory services to the general (re)insurance industry. He has experience working with financial services companies, primarily with SEC-registered global insurers.



**Eric Wehrwein**

Partner

+1 441 299 1261

[eric.wehrwein@deloitte.com](mailto:eric.wehrwein@deloitte.com)

Eric Wehrwein is an Audit Partner with experience leading external and internal audit teams as well as advisory engagements with international reinsurance companies, ranging across general property and casualty, specialty, and catastrophe reinsurers.



**Kelvin Lam**

Partner

+1 441 298 1111

[kelvin.lam@deloitte.com](mailto:kelvin.lam@deloitte.com)

Kelvin Lam is an Actuarial Partner with a focus on providing consulting, assurance and system implementation services to multinational insurance clients. He has worked on consulting engagements, provided actuarial advisory, supported actuarial modernization and M&A projects.



**Brett Henshilwood**

Partner

+ 1 441 299 1395

[brett.henshilwood@deloitte.com](mailto:brett.henshilwood@deloitte.com)

Brett Henshilwood is a Partner with risk management and internal controls audit experience. Brett has extensive experience in performing controls work on information systems, including application implementation reviews and risk assessments.



**Andy DeGregorio**

Partner

+1 441 299 1870

[andy.degregorio@deloitte.com](mailto:andy.degregorio@deloitte.com)

Andy Degregorio is a Partner with US tax experience working with clients globally and in the US. He has served various companies within the financial services industry, including P&C and life insurance, reinsurance, captives, ILS funds, private equity, banks, and hedge funds.

**Deloitte Ltd.**  
**Corner House**  
**20 Parliament Street**  
**Hamilton HM 12**  
**Bermuda**  
**+1 (441) 292 1500**

Deloitte refers to one or more of Deloitte Touche Tohmatsu Limited ("DTTL"), its global network of member firms, and their related entities (collectively, the "Deloitte organization"). DTTL (also referred to as "Deloitte Global") and each of its member firms and related entities are legally separate and independent entities, which cannot obligate or bind each other in respect of third parties. DTTL and each DTTL member firm and related entity is liable only for its own acts and omissions, and not those of each other. DTTL does not provide services to clients. Please see [www.deloitte.com/about](http://www.deloitte.com/about) to learn more. Deloitte Ltd. is an affiliate of DCB Holding Ltd., a member firm of Deloitte Touche Tohmatsu Limited. Deloitte provides industry-leading audit and assurance, tax and legal, consulting, financial advisory, and risk advisory services to nearly 90% of the Fortune Global 500® and thousands of private companies. Our professionals deliver measurable and lasting results that help reinforce public trust in capital markets, enable clients to transform and thrive, and lead the way toward a stronger economy, a more equitable society and a sustainable world. Building on its 175-plus year history, Deloitte spans more than 150 countries and territories. Learn how Deloitte's more than 415,000 people worldwide make an impact that matters at [www.deloitte.com](http://www.deloitte.com). This communication contains general information only, and none of Deloitte Touche Tohmatsu Limited ("DTTL"), its global network of member firms or their related entities (collectively, the "Deloitte organization") is, by means of this communication, rendering professional advice or services. Before making any decision or taking any action that may affect your finances or your business, you should consult a qualified professional adviser. No representations, warranties or undertakings (express or implied) are given as to the accuracy or completeness of the information in this communication, and none of DTTL, its member firms, related entities, employees or agents shall be liable or responsible for any loss or damage whatsoever arising directly or indirectly in connection with any person relying on this communication. DTTL and each of its member firms, and their related entities, are legally separate and independent entities. © 2023 DCB Holding Ltd. and its affiliates.