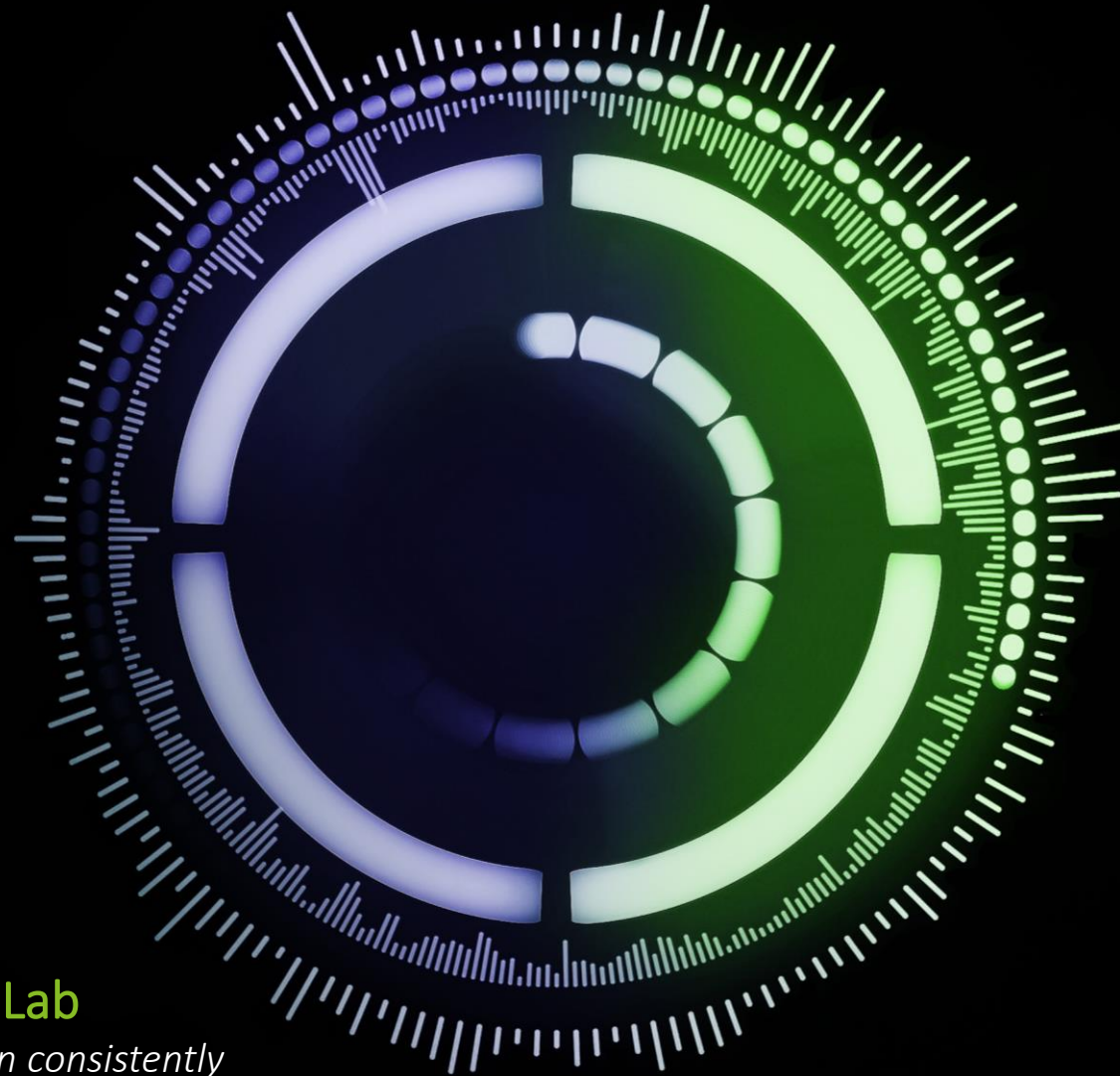


Deloitte.



Insight-Driven Performance Lab

Unlocking how your organisation can consistently generate insight and make effective decisions to optimise business performance

Deloitte's Insight-Driven Performance Lab

An immersive one day lab to showcase the latest thinking in Enterprise Performance Management (EPM) and explore how an Insight-Driven Performance (IDP) approach can help your organisation to unlock value through effective decision-making

What is the lab?

The lab **introduces, explores and reflects** on the eight core components of **Insight-Driven Performance**.

Utilising **leading practice, case studies, videos** and **demos** from across different industries, the lab brings to life how organisations can industrialise effective enterprise performance management and decision-making.

Our clients use the lab to **explore** and **align** around their own ambitions for making their enterprise performance management more insight-driven.

How does it feel?

Inspiring, immersive and innovative – the lab can be run **fully in-person** at our state of the art greenhouse facilities in Central London – a truly creative and collaborative space.

The lab brings the topics to life in **fun, interactive** and **horizon-expanding** ways.

Alternatively, the lab can be conducted **fully remotely** via our dedicated metaverse space and optional Extended Reality (XR) technology to bring together dispersed teams in an immersive way.

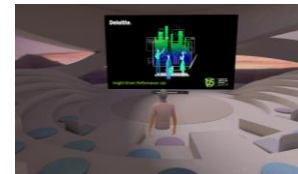
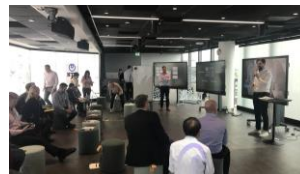
Who should participate?

The lab is particularly suited to participation from senior members of the finance team – typically the **FLT** and other Finance leaders focused on **FP&A** and **Performance Management**.

The lab is also a great way to foster collaboration between Finance and its business colleagues – with many labs benefitting from the attendance of representatives of **Strategy, Commercial, Marketing, Operations and IT**.

Bring your team together in our state-of-the-art Greenhouse space...

...or via our immersive online metaverse space



What does the Insight-Driven Performance Lab consist of?

The lab's eight modules deliver an end-to-end view of the elements necessary to achieve Insight-Driven Performance. Each module introduces the topic, explores it interactively then assesses what it means for your organisation.



Introduce

Consider the art of the possible and what it takes to succeed



Explore

Engage with demos, case studies and interactive exercises to understand the topic in greater depth



Reflect

Assess where your organisation is today and where you want it to be in the future

Set the scene

For each component learn **what it is**, **what good looks like**, **what you need** and **the value of getting there**.

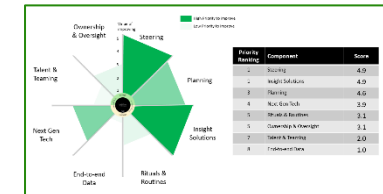
Demos & Case Studies

Interact with leading practice **tools, initiatives and case studies** for each topic and discuss them with our subject matter experts and your team

Self-appraisal

Reflect on **current maturity** and **self-assess** versus benchmark, propose next steps

Assess ambition



Discuss the maturity assessment completed throughout the session and **prioritise next steps**

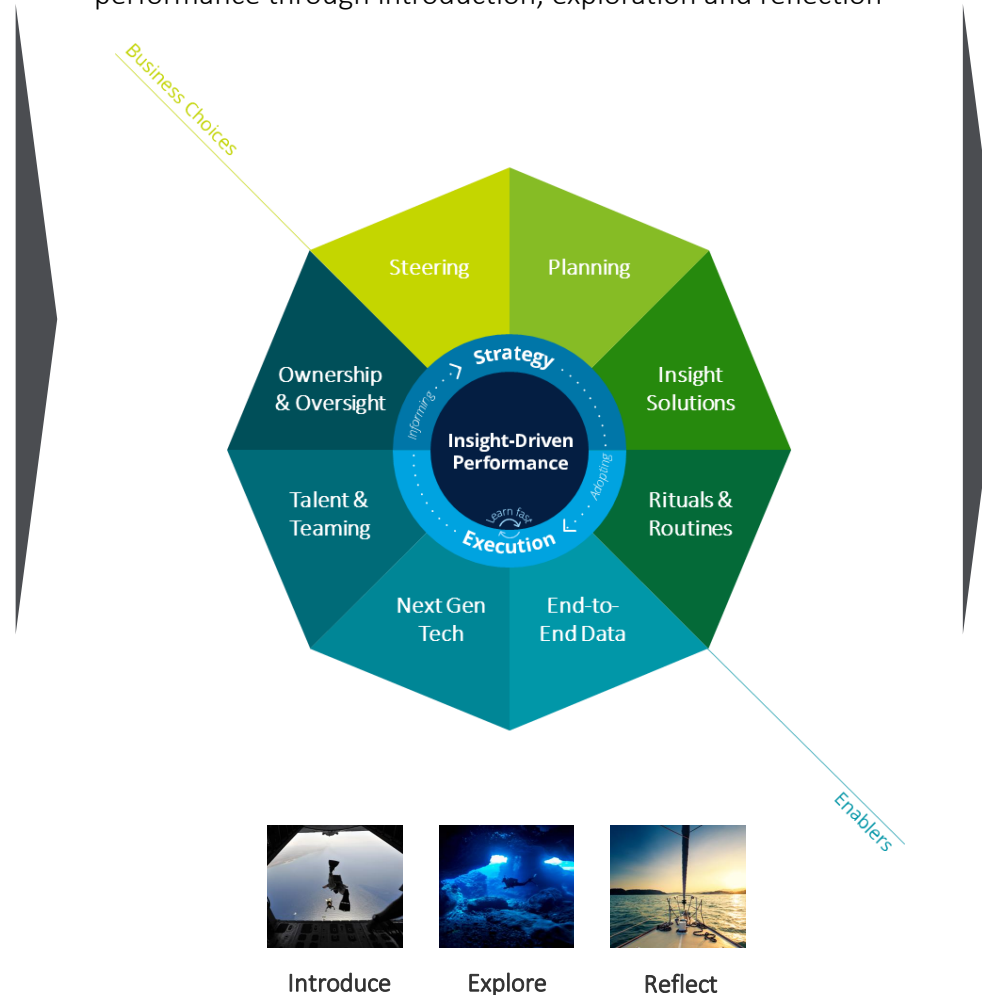
What are the benefits of participating in an Insight-Driven Performance Lab?

Lab participant triggers

- We want to become a more insight-driven organisation
- We want to understand the full range of topics to be mastered to truly manage performance
- Our approaches to enterprise performance management are not sufficiently aligned and optimised versus our strategy or the environment we operate in
- We are on or are embarking on a performance management transformation programme and want to ensure we are aligned on the journey and ambition
- We struggle to consistently generate insight
- We want to understand how our business can come together to discuss performance in a cross-enterprise way
- We are unclear as to how new technologies and automation can improve performance management to realise value

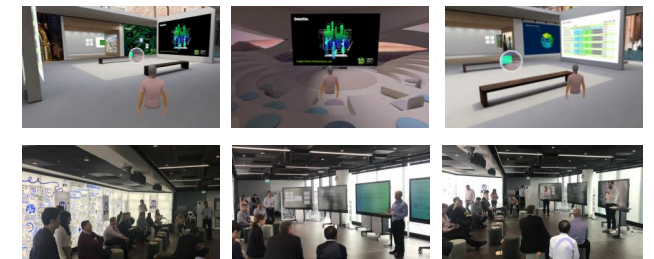
Lab structure

The lab focuses on the eight key components of Insight Driven performance through introduction, exploration and reflection



Outcomes of the lab

- An understanding of the eight components of Insight-Driven Performance and their importance in enabling effective decision-making
- Awareness of leading practice performance management approaches and solutions across industries
- An understanding of your organisation's current maturity across the eight key components of Insight-Driven Performance
- Executive alignment around the ambition for change





Let's talk...

For further information or discussion around how the Insight-Driven Performance Lab can help your organisation, contact the team:



Michael Haupt

Partner

+44 20 7007 4073

mihaupt@deloitte.co.uk



Simon Barnes

Partner

+44 20 7007 6376

sbarnes@deloitte.co.uk



Stephen Flavahan

Insight-Driven Performance lead

+44 20 7007 2018

sflavahan@deloitte.co.uk



Jeevi Paramanathan

Insight-Driven Performance lead

+44 20 7303 6716

jparamanathan@deloitte.co.uk

This publication has been written in general terms and we recommend that you obtain professional advice before acting or refraining from action on any of the contents of this publication. Deloitte MCS Limited accepts no liability for any loss occasioned to any person acting or refraining from action as a result of any material in this publication.

Deloitte MCS Limited is registered in England and Wales with registered number 03311052 and its registered office at Hill House, 1 Little New Street, London, EC4A 3TR, United Kingdom.

Deloitte MCS Limited is a subsidiary of Deloitte LLP, which is the United Kingdom affiliate of Deloitte NSE LLP, a member firm of Deloitte Touche Tohmatsu Limited, a UK private company limited by guarantee ("DTTL"). DTTL and each of its member firms are legally separate and independent entities. DTTL and Deloitte NSE LLP do not provide services to clients. Please see www.deloitte.com/about to learn more about our global network of member firms.