

**Deloitte.**



Making the complex, simple

Deloitte Travel Compliance app enabled by SAP® Concur® solutions



MAKING AN  
IMPACT THAT  
MATTERS  
*Since 1845*

# Enabling **confidence** in your compliance management processes

The world of work and travel is changing fast. Whether it is regular business travel or new remote working needs, organisations need to know where their people are working. The **Deloitte Travel Compliance app** provides global governance to track and report your business travel and remote work populations at the touch of a button.

The Deloitte Travel Compliance app enabled by SAP® Concur® solutions connects Deloitte's travel compliance platform with Concur Travel, Concur Request and Concur Expense to drive enhanced employer compliance and reporting through periodic analysis of your businesses remote work and business travel compliance needs.

For you, this means effective **compliance, automated governance** and a **real-time assessment of travel risk**.

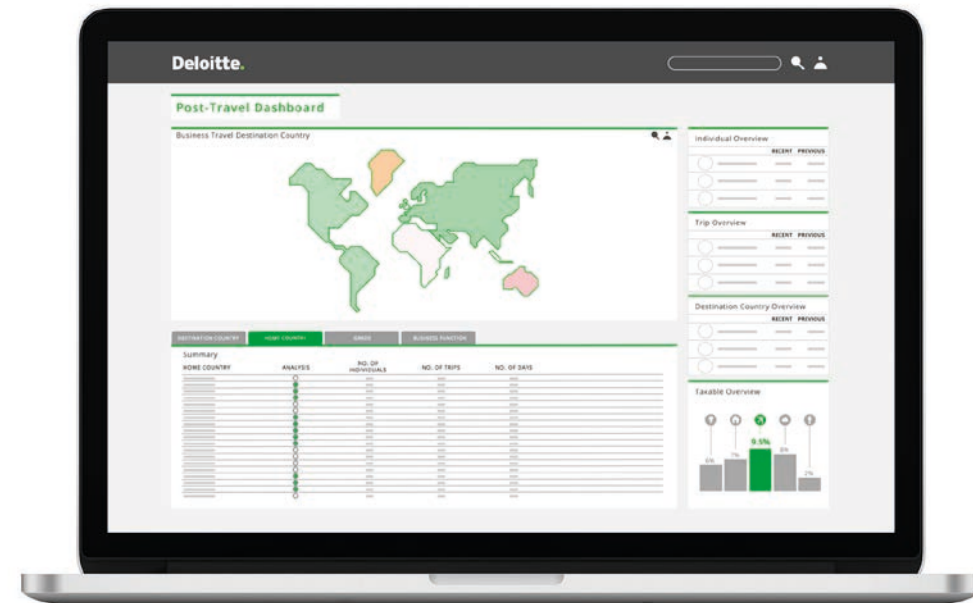
## How does it benefit your business?

- ✔ Streamlined data collection and assessment processes
- ✔ Deloitte custom built data cleansing processes
- ✔ Access to Deloitte's comprehensive assessment engines
- ✔ Tax and Social Security logic – powered by Deloitte
- ✔ Opportunity to define bespoke thresholds
- ✔ Global oversight and reporting through interactive dashboards
- ✔ The ability to connect identification of risk to compliance action

## What compliance coverage does this provide?

- Income Taxes
- Interstate tax
- Social Security
- Payroll taxes
- Corporate taxes and entity establishments

**Driving enhanced business performance through automated data transfer and analysis**



**Compliance.** Without turbulence.

# Contacts



**James Macpherson**  
Global Business Travel  
Advantage Lead Partner



**Lorraine Cohen**  
Americas Business Travel  
Advantage Lead Partner



**Paul Klimowicz**  
EMEA Business Travel  
Advantage Lead Partner



**Jod Gill**  
APAC Business Travel  
Advantage Lead, Director



**Deloitte.**

To get started, search the **Deloitte Travel Compliance app** in the SAP Concur App Center  
For more information visit <https://www2.deloitte.com/uk/en/pages/tax/articles/deloitte-travel-apps.html>

Contact: [businesstraveladvantage@deloitte.co.uk](mailto:businesstraveladvantage@deloitte.co.uk)

Deloitte is a SAP Concur App Center Partner. Our relationship brings together the world's leading provider of integrated travel and expense management solutions and the leading professional services firm to create solutions that anticipate the changing demands of today's mobile workforce.



This communication contains general information only, and none of the Deloitte Touche Tohmatsu Limited (“DTTL”), its global network of member firms or their related entities (collectively, the “Deloitte organization”) is, by means of this communication, rendering professional advice or services. Before making any decisions or taking any action that may affect your finances or your business, you should consult a qualified professional adviser.

No representation, warranties or undertakings (express or implied) are given as to the accuracy or completeness of the information in this communication, and not of DTTL, its member firms, related entities, employees or agents shall be liable or responsible for any loss or damage whatsoever arising directly or indirectly in connection with any person relying on this communication. DTTL and each of its member firms, related entities, are legally separate and independent entities.

Note: Immigration services are provided by the immigration practices of Deloitte Touche Tohmatsu Limited (“DTTL”) member firms or other approved third parties outside the United States or by Berry Appleman & Leiden LLP (“BAL LLP”) in the United States or de Lint LLP in Canada an immigration law firm allied with Deloitte LLP in Canada.

BAL LLP provides US immigration services under an alliance with Deloitte LLP. Deloitte Tax LLP does not provide immigration or legal services and is not a party to the alliance with BAL LLP.

© 2020. For information, contact Deloitte Touche Tohmatsu Limited.

Designed and produced by 368 at Deloitte. J20202