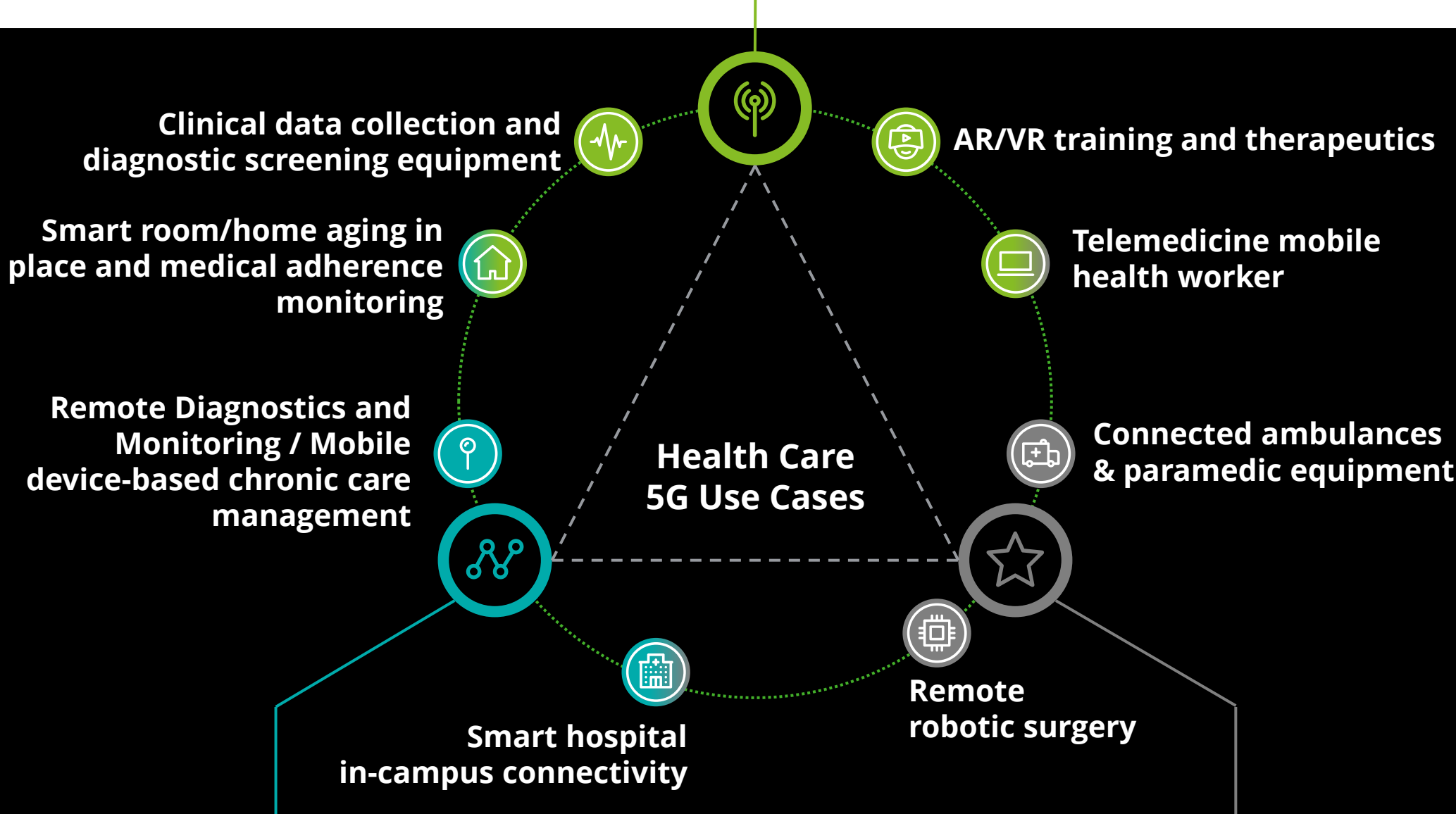




eMBB

It is the **first step in 5G deployment, allowing high bandwidth** for monitoring applications, diagnosis, imaging, clinical data screen, telemedicine, virtual peer consult etc.



mMTC

Connected hospital home devices, applications and robots, will **increase battery life for the equipment's, and connect thousands of devices in a health system.**

uRRLC

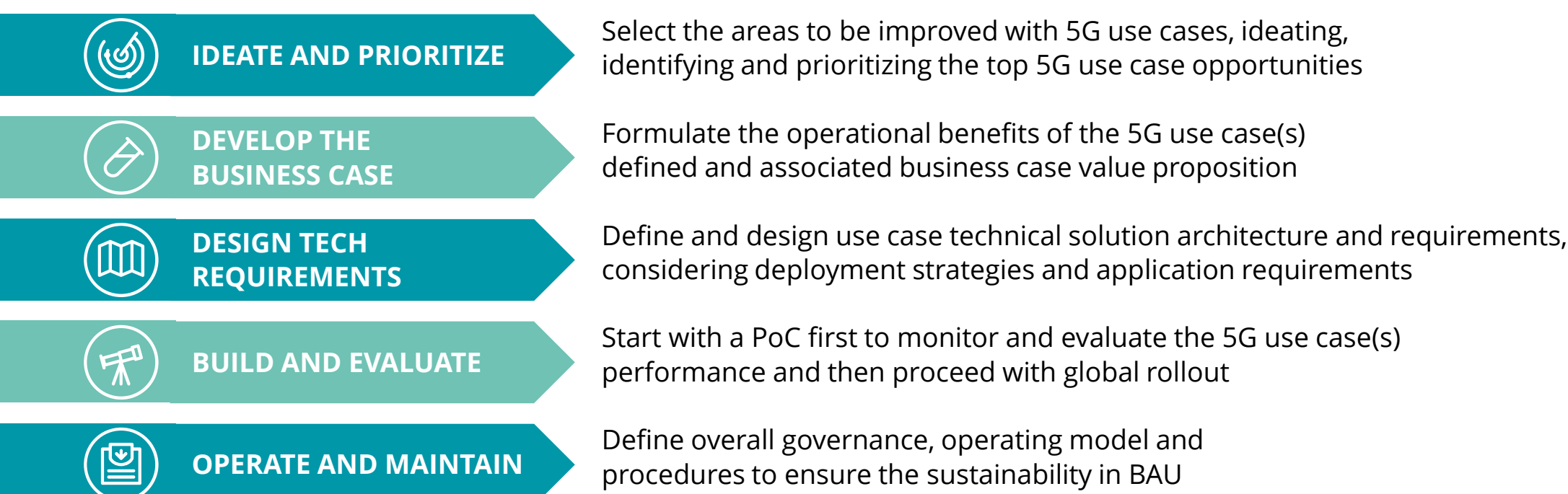
Ultra low latency will demand high network performance, bringing connected ambulances, remote surgery and AR/VR to the reality of the healthcare industry.

5G use cases achievements and predictions

- 88%** of providers are researching, planning, piloting or remotely monitoring patients with IoT
- 66%** of healthcare providers are on track for the development of telehealth programs
- By 2024 **20%** of consumers used tech to measure and share medical data with their providers
- 10ms latency** allows **remote driving** to deliver first aid and drugs

How can Deloitte help?

We translate business and industry needs into technical requirements delivering value added E2E 5G solutions that lead to **meaningful business outcomes.**



Sources: Deloitte TMT Predictions 2021, Huawei, IDC, Gartner, The Business Research Company

Contacts

Leaders



Craig Wigginton
5G Industry Leader
Deloitte Global
cwigginton@deloitte.com



Pedro Tavares
5G Offering Leader
Deloitte Global
petavares@deloitte.pt



Sara Siegel
Sector Leader
Deloitte Global
sarasiegel@deloitte.co.uk

General enquiries:
Global5G@deloitte.com
[Deloitte.com/5G](https://deloitte.com/5G)

5G Experts



Hugo Pinto
Associate Partner gTEE
Deloitte Portugal
hupinto@deloitte.pt



Pedro Sanguinho
Senior Manager gTEE
Deloitte Portugal
psanguinho@deloitte.pt

Sector Experts



Randy Bush
Principal
Deloitte US
jrbush@deloitte.com



Rachael Jensen-Vallar
Manager
Deloitte US
rajensen@deloitte.com

Acknowledgements

Special thanks to the Deloitte team who contributed to this publication in terms of researching, providing expertise, and coordinating: Gabriel Nunes –Manager gTEE, Américo Leão – Tech Consultant gTEE

Deloitte refers to one or more of Deloitte Touche Tohmatsu Limited ("DTTL"), its global network of member firms, and their related entities (collectively, the "Deloitte organization"). DTTL (also referred to as "Deloitte Global") and each of its member firms and related entities are legally separate and independent entities, which cannot obligate or bind each other in respect of third parties. DTTL and each DTTL member firm and related entity is liable only for its own acts and omissions, and not those of each other. DTTL does not provide services to clients. Please see www.deloitte.com/about to learn more.

Deloitte is a leading global provider of audit and assurance, consulting, financial advisory, risk advisory, tax and related services. Our global network of member firms and related entities in more than 150 countries and territories (collectively, the "Deloitte organization") serves four out of five Fortune Global 500® companies. Learn how Deloitte's more than 345,000 people make an impact that matters at www.deloitte.com.

This communication contains general information only, and none of Deloitte Touche Tohmatsu Limited ("DTTL"), its global network of member firms or their related entities (collectively, the "Deloitte organization") is, by means of this communication, rendering professional advice or services. Before making any decision or taking any action that may affect your finances or your business, you should consult a qualified professional adviser. No representations, warranties or undertakings (express or implied) are given as to the accuracy or completeness of the information in this communication, and none of DTTL, its member firms, related entities, employees or agents shall be liable or responsible for any loss or damage whatsoever arising directly or indirectly in connection with any person relying on this communication. DTTL and each of its member firms, and their related entities, are legally separate and independent entities.