



# Legal Rover

THE NETHERLANDS | GOVERNMENT | PUBLIC ADMINISTRATION

## Using GenAI-powered tool Legal Rover to examine the Dutch implementation of EU directives

**Deloitte supported a Dutch Public Administration to uncover insights into the implementation of EU directives affecting the Dutch business landscape.**

### Navigating regulatory complexities

The Dutch Public Administration lacked a clear overview of EU directive implementation and its potential effects on the business landscape and international competitiveness of Dutch companies. This lack of clarity posed a significant challenge in effectively managing and adapting to regulatory changes and mitigating possible negative impacts. To address this, they sought to gain an enhanced oversight and better understanding of the potential consequences of these implementations, especially given the overwhelming volume of related documentation.

The first challenge was to identify which implementation choices led to regulations exceeding EU directive requirements from 2019 to 2023, and to what extent these stricter implementations were made explicit. The Dutch Public Administration also aimed to assess whether expected structural regulatory costs for businesses were anticipated and accounted for, which aspects of the business climate were affected by these choices, and if the expected impacts on international competitiveness and the business climate were clarified in the explanatory memorandum.

“The **increasingly complex web** of EU and national-level regulations and legislation is making the regulatory landscape more challenging, leading to higher costs for businesses and a significant lack of oversight.”

## Deloitte's innovative approach

Being in control of EU regulatory challenges requires new methodologies and emerging technologies such as (Generative) AI to provide an effective solution.

To tackle the issues, the Legal Rover tool used its capabilities to conduct both a transposition analysis of the Dutch implementation. This process involved selecting specific EU directives and their Member State transpositions for analysis, viewing documents with highlighted obligations, linking EU directive articles to national transposition articles, and obtaining detailed descriptions of the implementation choices made by Member States. After which a custom analysis tailored to the needs of the Public Administration was carried out.

Through AI-driven analysis, Legal Rover assessed the impact of these implementation choices on various aspects of the current business landscape and international competitiveness. Legal experts then reviewed the machine-generated output to enhance accuracy. The input was subsequently incorporated back into the system to refine future analyses, leading to insights that were vital to answering the necessary questions. This collaboration between Deloitte's legal experts and AI ensured that the final analyses are well-rounded as well as trustworthy.

### Legal Rover's impact



**918** memoranda processed



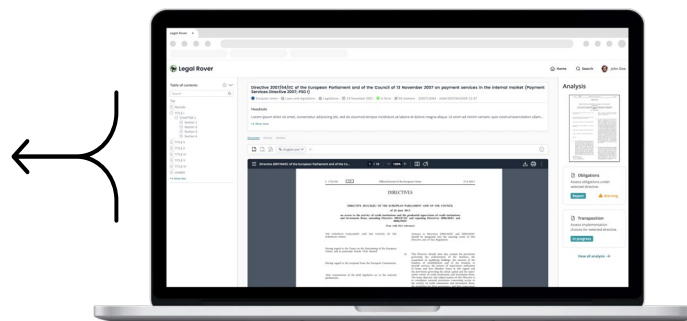
**40,000** pages of text analyzed



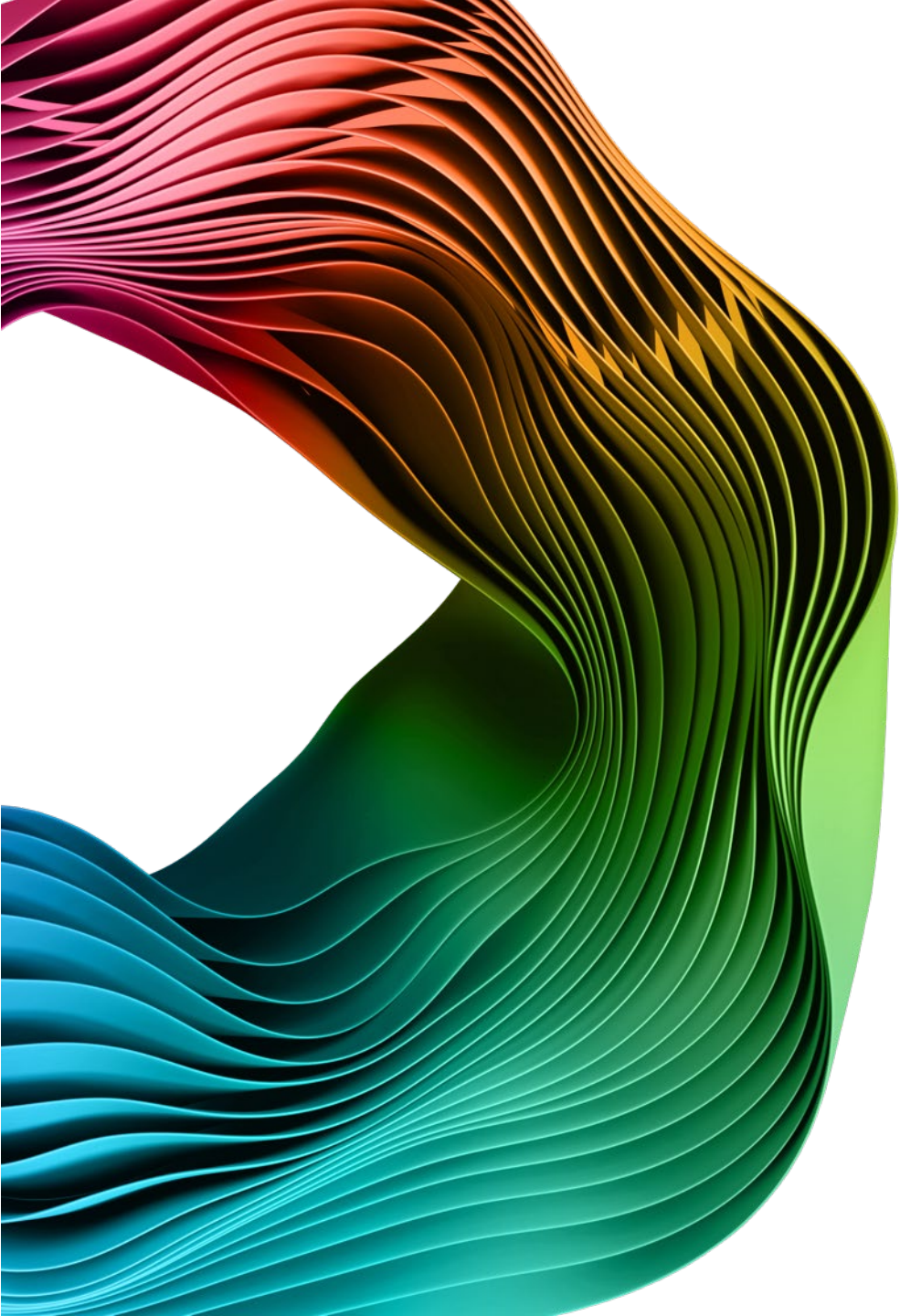
**3.2 million** words analyzed



**+/- 40%** time saved on impact analyses







## Get in touch

Our approach delivers valuable insights in the complex legal landscape within the EU. By combining Deloitte's legal expertise with our digital capabilities, we offer innovative solutions that solve your unique challenges.



### **Ferd Grapperhaus**

Partner

fgrapperhaus@deloitte.nl

+31 88 2884017



### **Dominique Poot**

Director

dopoot@deloitte.nl

+31 88 2885957

## About Deloitte

Deloitte refers to one or more of Deloitte Touche Tohmatsu Limited ("DTTL"), its global network of member firms, and their related entities (collectively, the "Deloitte organization"). DTTL (also referred to as "Deloitte Global") and each of its member firms and related entities are legally separate and independent entities, which cannot obligate or bind each other in respect of third parties. DTTL and each DTTL member firm and related entity is liable only for its own acts and omissions, and not those of each other. DTTL does not provide services to clients.

Please see [www.deloitte.com/about](http://www.deloitte.com/about) to learn more.

This communication contains general information only, and none of DTTL, its global network of member firms or their related entities is, by means of this communication, rendering professional advice or services. Before making any decision or taking any action that may affect your finances or your business, you should consult a qualified professional adviser. No entity in the Deloitte organization shall be responsible for any loss whatsoever sustained by any person who relies on this communication.