



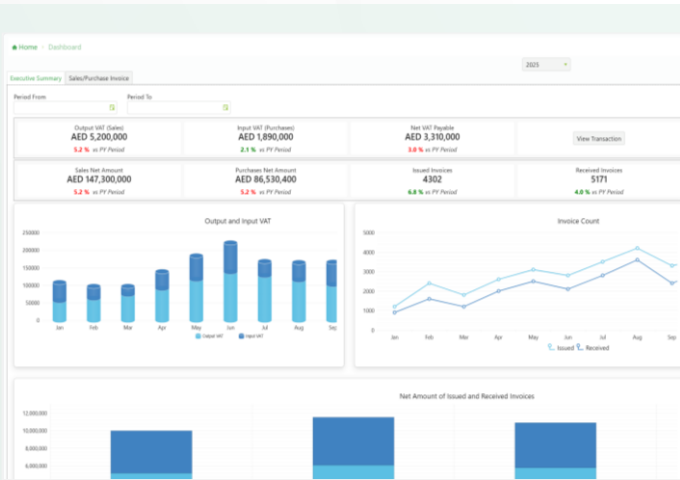
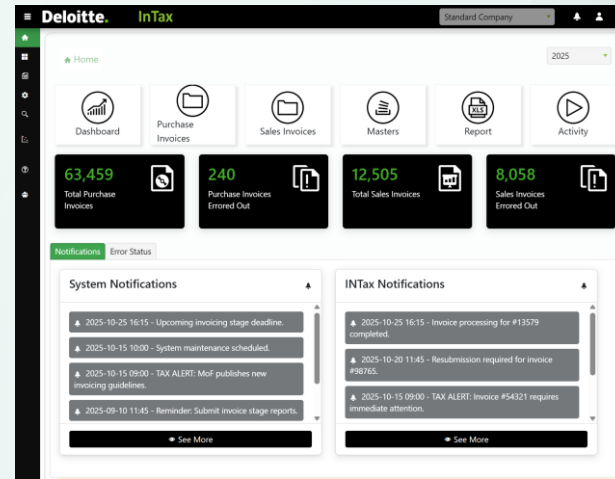
InTax by Deloitte

Transforming how businesses manage UAE e-invoicing



What is InTax?

InTax by Deloitte is a **centralized, user-friendly** platform designed to help businesses in the United Arab Emirates (UAE) manage their e-invoicing obligations. The solution streamlines invoice creation, validation, and secure transmission, supporting compliance with UAE e-invoicing requirements. With **flexible integration options** and dedicated local support, InTax makes your e-invoicing process **efficient and secure**.



Compliance made simple

InTax is built to meet all UAE Ministry of Finance and Peppol standards, ensuring your invoices are always compliant. The platform offers **real-time invoice tracking**, interactive **dashboards** for Value Added Tax (VAT) and invoice **monitoring**, and powerful analytics to help you understand trends and performance. **Automated notifications** and **comprehensive reporting** simplify reconciliation and VAT filing.



Trusted and accredited

Deloitte is officially listed as a pre-approved e-invoicing service provider by the UAE Ministry of Finance, ensuring that InTax meets all regulatory requirements and quality standards. Backed by Deloitte's extensive expertise in VAT advisory, tax technology consulting, and functional support, we offer a holistic approach to tax and e-invoicing operations. With our experienced local team, you benefit from a solution that is not only recognized by authorities and a strong client track record but also supported by end-to-end tax and technology services.



InTax key features



Certified & Secure

ISO & SOC certified, robust data protection and security



Local & Smart Support

UAE-based experts and 24x7 ticketing support platform



Flexible Integrations

Seamless integrations with Web API, SFTP, ERP plug-ins or manual upload



Local Data Residency

Data securely hosted on UAE-based servers.



VAT Reporting & Analytics

Powerful dashboards for VAT and invoice analytics



Real-Time Tracking & Automated Alerts

Instant invoice status updates and exception notifications

Next steps for businesses

To ensure a successful transition to e-invoicing, businesses should focus on the following key steps:

- Assess impact
- Prepare systems
- Appoint an Accredited Service Provider
- Redesign
- Pilot participation
- Compliance processes

How Deloitte can help

Deloitte offers a range of services to assist businesses in managing the implementation of e-invoicing effectively, including but not limited to:

- Implementation of InTax e-invoicing solution
- Support with reviewing impacts on business
- Regulatory compliance and strategy development
- Functional and technical impact assessment
- Go-live and post go-live support

Let's connect

- ✉ dmeintax@deloitte.com
- 🌐 www.deloitte.com/middle-east/
- ☎ +971 509 261 880

Join us for the upcoming weekly InTax Demo

[Register here](#)

Deloitte & Touche (M.E.) hereby authorizes you to view the information provided in this publication, subject to the following conditions:

This publication has been written in general terms and therefore cannot be relied on to cover specific situations; application of the principles set out will depend upon the particular circumstances involved and we recommend that you obtain professional advice before acting or refraining from acting on any of the contents of this publication.

Deloitte Middle East” or “DME” refers to Deloitte & Touche (M.E.) which is the affiliate for the territories of Bahrain, Cyprus, Egypt, Iraq, Jordan, Kuwait, Lebanon, Libya, Oman, Palestinian Ruled Territories, Qatar, Saudi Arabia, and United Arab Emirates.

Deloitte EMEA BV, a limited liability company incorporated under the laws of Belgium (Deloitte EMEA), is a Member Firm of Deloitte Touche Tohmatsu Limited (DTTL). Deloitte Middle East, or their affiliates are shareholders in Deloitte EMEA. Deloitte EMEA and DTTL do not provide services to clients.

Deloitte refers to one or more of Deloitte Touche Tohmatsu Limited (“DTTL”), its global network of member firms, and their related entities (collectively, the “Deloitte organization”). DTTL (also referred to as “Deloitte Global”) and each of its member firms and related entities are legally separate and independent entities, which cannot obligate or bind each other in respect of third parties. DTTL and each DTTL member firm and related entity is liable only for its own acts and omissions, and not those of each other. DTTL does not provide services to clients. Please see www.deloitte.com/about to learn more.

This publication contains general information only, and none of Deloitte EMEA (EMEA), its shareholders and affiliates is, by means of this communication, rendering professional advice or services. Before making any decision or taking any action that may affect your finances or your business, you should consult a qualified professional adviser.

No representations, warranties, or undertakings (express or implied) are given as to the accuracy or completeness of the information in this publication, and none of EMEA, the EMEA shareholders, their respective affiliates, employees or agents shall be liable or responsible for any loss or damage whatsoever arising directly or indirectly in connection with any person relying on this communication. EMEA, the EMEA shareholders and their respective affiliates are legally separate and independent entities.

Deloitte provides leading professional services to nearly 90% of the Fortune Global 500® and thousands of private companies. Our people deliver measurable and lasting results that help reinforce public trust in capital markets and enable clients to transform and thrive. Building on its 180+year history, Deloitte spans more than 150 countries and territories. Learn how Deloitte’s over 470,000 people worldwide work together every day to make an impact that matters at www.deloitte.com

DME would be pleased to advise readers on how to apply the principles set out in this publication to their specific circumstances. DME accepts no duty of care or liability for any loss occasioned to any person acting or refraining from action as a result of any material in this publication.

DME is a leading professional services organization established in the Middle East region with uninterrupted presence since 1926. DME’s presence in the Middle East region is established through its affiliated independent legal entities, which are licensed to operate and to provide services under the applicable laws and regulations of the relevant country. DME’s affiliates and related entities cannot oblige each other and/or DME, and when providing services, each affiliate and related entity engages directly and independently with its own clients and shall only be liable for its own acts or omissions and not those of any other affiliate.

DME provides services through 26 offices across 13 countries with more than 7,000 partners, directors and staff.