

# Reimagine tax and procurement

Taking an integrated approach to help provide new P2P value



Inefficient procure-to-pay (P2P) processes can have a huge impact on your organization's tax profile and your bottom line. Business complexity, information inaccuracies, and a lack of insights can lead to indirect tax overpayments or underpayments while also consuming inordinate amounts of employee time. An increasingly competitive business environment demands greater simplicity and greater integration at the intersection of tax and procurement.

## CAPABILITIES AT THE READY

How can you begin to transform the spend management picture when it comes to indirect tax challenges? Deloitte can help you reimagine tax and procurement. Our team deeply understands the importance of addressing tax as part of a broader P2P program, bringing a spectrum of skills that can help you move forward with confidence. Here are some areas in which we can help.

Defining **indirect tax requirements and streamlining tax policy** application in SAP Ariba

Embedding **tax processes and automation** into your P2P program

**Data integration** between a P2P digital procurement system and indirect tax software

Configuring indirect tax software to **generate taxability decisions**, rather than relying on employees and manual processes to determine the taxability of purchases

Sales and use tax recovery studies to provide an additional source of funding for projects, **identifying areas for improvement** to help you avoid recovery of overpaid tax in the future

**End-to-end tax process optimization** to provide visibility into the full cost of purchases—to help manage suppliers' expectations and reduce overall indirect tax variances

Automating the **posting of tax liabilities** into your core financial system



## SOLUTIONS IN SIGHT

SAP® Ariba® offers a suite of cloud solutions directed at transforming spend management. Indirect tax is an important aspect of purchases, developing a cost-effective, automated, and tax compliant indirect tax solution is vital. By aligning such a solution with your business processes—as part of a procure-to-pay transformation—you can realize tax efficiencies, reduce the risk of noncompliance, identify opportunities, improve P2P processes, and help reduce the costs associated with complex industry-specific global indirect taxes.

## POTENTIAL RESULTS WHEN YOU WORK WITH DELOITTE



Eliminate manual work, reduce tax compliance related costs, and mitigate risks by automating indirect tax determination and processes



Generate reports for expected and actual taxes to support regulatory demands as well as business decision-making



Know the total spend amount including tax before you issue a purchase order, helping suppliers identify what tax is expected and enhancing invoice reconciliation processes



Reduce tax leakage including overpayments, underpayments, and time spent on indirect tax recovery activities



Get a more complete picture of indirect tax throughout your P2P lifecycle and enable a traceable, standardized process for indirect tax reporting to authorities



Improve supplier relations with more accurate indirect tax processes to assist with more timely payments



# Integrating tax and P2P activities

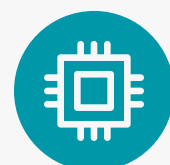
As the speed, transparency, and seamless interactions between customers and suppliers continue to increase, simplifying tax processes in your P2P activities can provide a better supplier relationship experience and create a competitive advantage. With new integrated capabilities enabled by SAP Ariba cloud solutions, you can bring a new level of automation, efficiency, accuracy, and insights to your business. Deloitte—a leader in tax, procurement modernization, SAP technology enablement, and business transformation—can help.

## DISCOVER THE DELOITTE DIFFERENCE

With thousands of tax practitioners and SAP specialists around the globe, Deloitte can bring a spectrum of skills and capabilities to your global indirect tax-related challenges. What is it like to work with Deloitte? Here's a look at what we can bring to transform your business and provide tax technology solutions to complex tax challenges.



A broad, "business first" approach to transformation—to help identify tax requirements across your enterprise and determine whether tax technologies are aligned with business processes



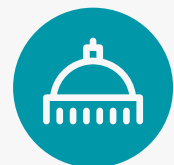
End-to-end design, development, and deployment capabilities for embedding automated indirect tax processes across an integrated SAP Ariba environment



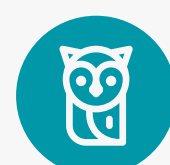
Industry-specific experience, innovative templates, and proprietary accelerators that can help you realize tax value sooner



Leadership recognized by SAP, with four 2018 SAP® Pinnacle Awards, including Partner of the Year for SAP Ariba



One of the largest and longest standing tax technology practices in the market. Our Tax Management Consulting professionals are recognized for their highly valued combination of tax technical and tax technology knowledge



Global reach, with 18,500 professionals focused on SAP solutions

## Let's talk

If simplifying the growing complexities of indirect tax and spend management is a priority for your organization, we should talk. The Deloitte team can help you reimagine tax and procurement and find new opportunities for value if you're choosing SAP technology.

Contact us to get additional insights on how we can help you deploy SAP Ariba solutions to get ahead of global indirect tax reporting requirements, to schedule a demo, or to discuss a specific challenge your organization faces.

## Contacts

**Les Jackson, Managing Director**  
**SAP Ariba Enterprise Tax**  
**Integration Leader**  
**Deloitte Tax LLP**  
Email: [lejackson@deloitte.com](mailto:lejackson@deloitte.com)

**Bryan Hartney,**  
**Managing Director**  
**SAP Tax Sales Leader**  
**Deloitte Services**  
Email: [bhartney@deloitte.com](mailto:bhartney@deloitte.com)

**SAP@deloitte.com**  
**[www.deloitte.com/SAP](http://www.deloitte.com/SAP)**  
**[@DeloitteSAP](https://twitter.com/DeloitteSAP)**

### About Deloitte

Deloitte refers to one or more of Deloitte Touche Tohmatsu Limited, a UK private company limited by guarantee ("DTTL"), its network of member firms, and their related entities. DTTL and each of its member firms are legally separate and independent entities. DTTL (also referred to as "Deloitte Global") does not provide services to clients. Please see [www.deloitte.com/about](http://www.deloitte.com/about) for a more detailed description of DTTL and its member firms.

Deloitte provides audit & assurance, consulting, financial advisory, risk advisory, tax and related services to public and private clients spanning multiple industries. Deloitte serves four out of five Fortune Global 500® companies through a globally connected network of member firms in more than 150 countries and territories bringing world-class capabilities, insights, and high-quality service to address clients' most complex business challenges. To learn more about how Deloitte's approximately 245,000 professionals make an impact that matters, please connect with us on Facebook, LinkedIn, or Twitter.

This communication contains general information only, and none of Deloitte Touche Tohmatsu Limited, its member firms, or their related entities (collectively, the "Deloitte network") is, by means of this communication, rendering professional advice or services. Before making any decision or taking any action that may affect your finances or your business, you should consult a qualified professional adviser. No entity in the Deloitte network shall be responsible for any loss whatsoever sustained by any person who relies on this communication.