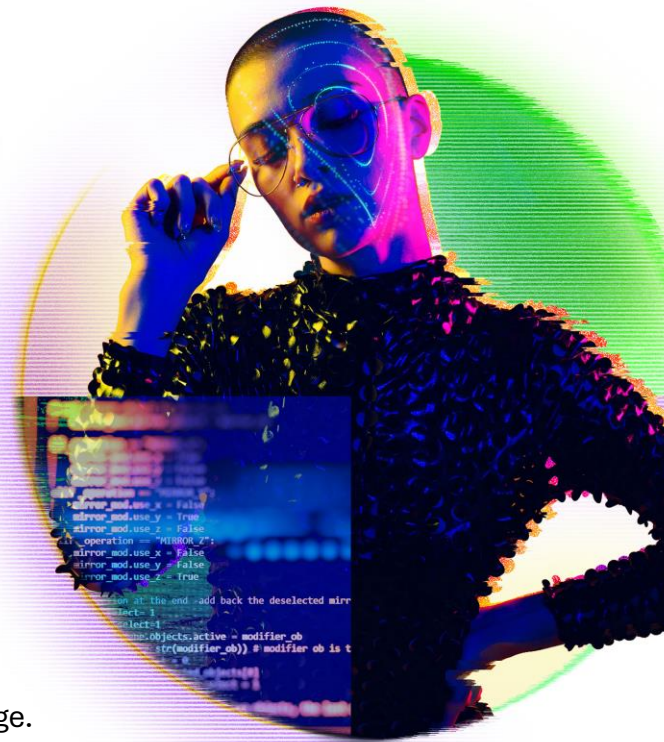









# Accelerate impact with Agentic AI Blueprint for Telcos



Agentic AI isn't just another tech trend—it's a strategic advantage. Telcos that harness its power gain a competitive edge by streamlining operations, elevating customer experience, and unlocking new revenue opportunities. **Deloitte's Agentic AI Blueprint for Telcos** empowers leaders to move fast, scale smart, and drive measurable business value from agentic AI.

**Imagine how an ensemble of specialized agents, working 24x7, will revolutionize core business capabilities for telcos, including...**

				
<b>Network design and operations</b>	<b>Fraud and risk management</b>	<b>Customer experience</b>	<b>Digital workforce</b>	<b>Enabling functions</b>
Automatically generate optimal network routing and configurations, fine-tune performance and predict and resolve network issues in real-time	Enable real-time fraud detection and autonomously respond to suspicious activities to mitigate risks in dynamic and complex fraud scenarios	Accelerate and automate customer service by anticipating needs and proactively supporting customers with intelligent, and context-aware agents	Operate 24x7 digital workforce that augments human decision-making to execute a wide range of work-types with speed and accuracy	Drive efficiencies and elevate team member experience by automating critical workflows in multiple functional domains including Finance, Procurement, Sales, Marketing, HR and IT

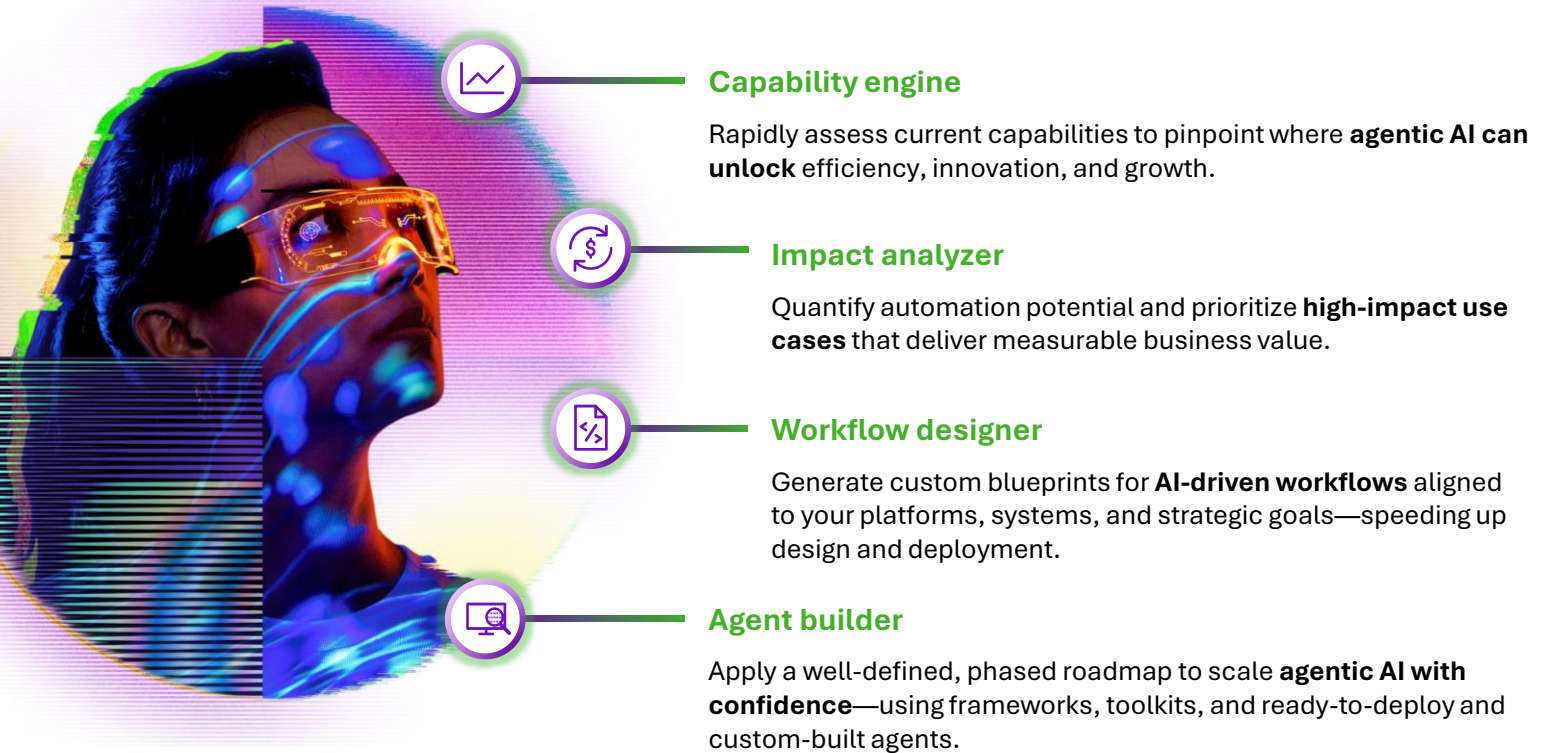
## Adoption of agentic AI at scale can be complex. With Agentic AI Blueprint for Telcos:

- Rapidly assess the breadth of telco capabilities to identify high potential areas for transformation with agentic AI, by combining industry standard frameworks with Deloitte's proprietary benchmarks
- Build leadership and organizational alignment with a value-driven roadmap, informed by the organization's capability map and data, and agentic workflows tailored to the technology environment
- Accelerate the journey from strategy to impact by deployment of a growing library of ready-to-deploy and custom-built agents

# Your fast track to scalable agentic AI

**Deloitte's Agentic AI Blueprint for Telcos** offers an end-to-end solution to identify high-value opportunities, design tailored workflows, and accelerate impact using a growing library of ready-to-deploy and custom-built agents.

## Key components



## Get in touch today with our TMT and AI leaders



**Jody McDermott**  
Global Telecom Leader  
Deloitte Canada  
[jodymcdermott@deloitte.ca](mailto:jodymcdermott@deloitte.ca)



**George Johnston**  
Partner, Technology, Media  
& Telecommunications  
AI Leader  
Deloitte UK  
[gejohnston@deloitte.co.uk](mailto:gejohnston@deloitte.co.uk)



**Emmanuel Durou**  
Partner, Middle East  
Technology, Media &  
Telecommunications Leader  
Deloitte & Touche (M.E.)  
[edurou@deloitte.com](mailto:edurou@deloitte.com)  
+971 (0) 505913078



**Clifford Foster**  
Partner, Middle East  
Engineering Leader  
Deloitte & Touche (M.E.)  
[clfoster@deloitte.com](mailto:clfoster@deloitte.com)  
+971(0)420376208888

### About Deloitte

This publication has been written in general terms and therefore cannot be relied on to cover specific situations; application of the principles set out will depend upon the particular circumstances involved and we recommend that you obtain professional advice before acting or refraining from acting on any of the contents of this publication.

Deloitte & Touche (M.E.) (DME) is an affiliated sublicensed partnership of Deloitte NSE LLP with no legal ownership to DCTL. Deloitte North South Europe LLP (NSE) is a licensed member firm of Deloitte Touche Tohmatsu Limited.

Deloitte refers to one or more of DCTL, its global network of member firms, and their related entities. DCTL (also referred to as "Deloitte Global") and each of its member firms are legally separate and independent entities. DCTL, NSE and DME do not provide services to clients. Please see [www.deloitte.com/about](http://www.deloitte.com/about) to learn more.

Deloitte is a leading global provider of Audit & Assurance, Tax & Legal and Consulting and related services. Our network of member firms in more than 150 countries and territories, serves four out of five Fortune Global 500® companies. Learn how Deloitte's approximately 457,000 people make an impact that matters at [www.deloitte.com](http://www.deloitte.com).

DME would be pleased to advise readers on how to apply the principles set out in this publication to their specific circumstances. DME accepts no duty of care or liability for any loss occasioned to any person acting or refraining from action as a result of any material in this publication.

DME is a leading professional services organization established in the Middle East region with uninterrupted presence since 1926. DME's presence in the Middle East region is established through its affiliated independent legal entities, which are licensed to operate and to provide services under the applicable laws and regulations of the relevant country. DME's affiliates and related entities cannot oblige each other and/or DME, and when providing services, each affiliate and related entity engages directly and independently with its own clients and shall only be liable for its own acts or omissions and not those of any other affiliate.

DME provides services through 23 offices across 15 countries with more than 7,000 partners, directors and staff. It has also received numerous awards in the last few years such as the 2022 & 2023 Great Place to Work® in the UAE, the 2023 Great Place to Work® in the KSA, and the Middle East Tax Firm of the year.

© 2025 Deloitte & Touche (M.E.). All rights reserved.

### Scan to learn more

