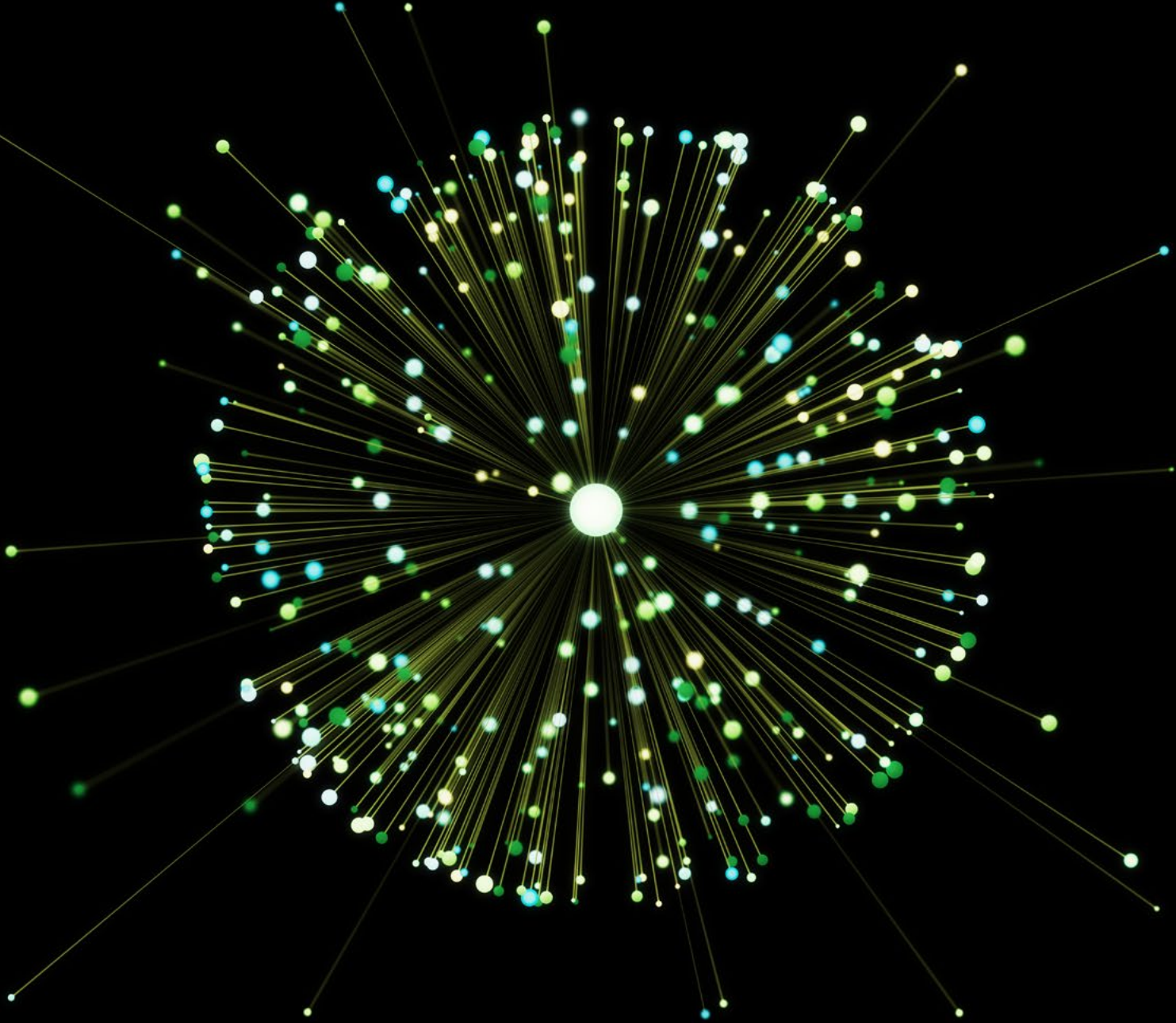
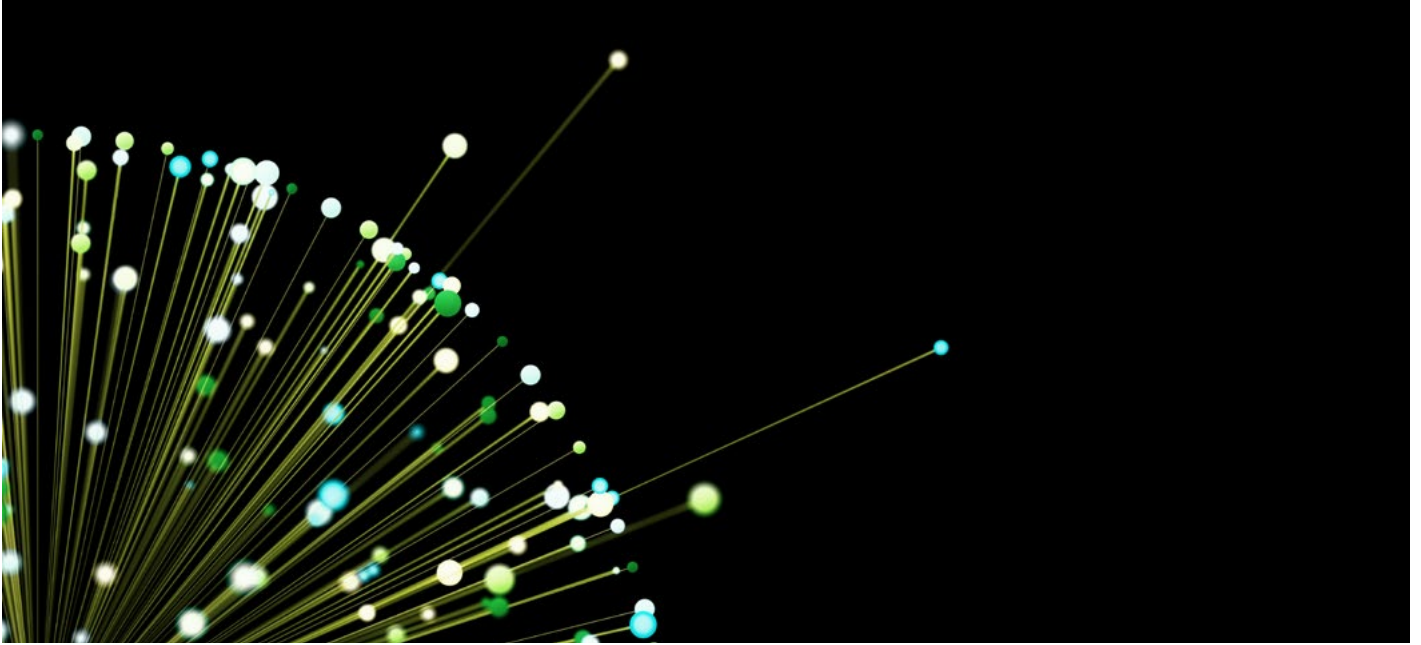


Deloitte.



Private Equity
Alternatives by Deloitte



Our private equity services

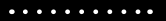
Throughout the crisis and the development of the Luxembourg private equity industry, Deloitte Luxembourg remained steadfast and attentive, working alongside many private equity firms, custodians, fund administrators, and other service providers, supporting them and their business operations to cope with new regulations and operational requirements.

Supported by a vast array of international, multilingual experts throughout Deloitte's global network, Deloitte Luxembourg is a recognized market leader, with a reputation for local and international service excellence.

When it comes to private equity services, Deloitte Luxembourg covers the entire life cycle from fund setup, transaction advice, accounting, and financial reporting to exit strategies.



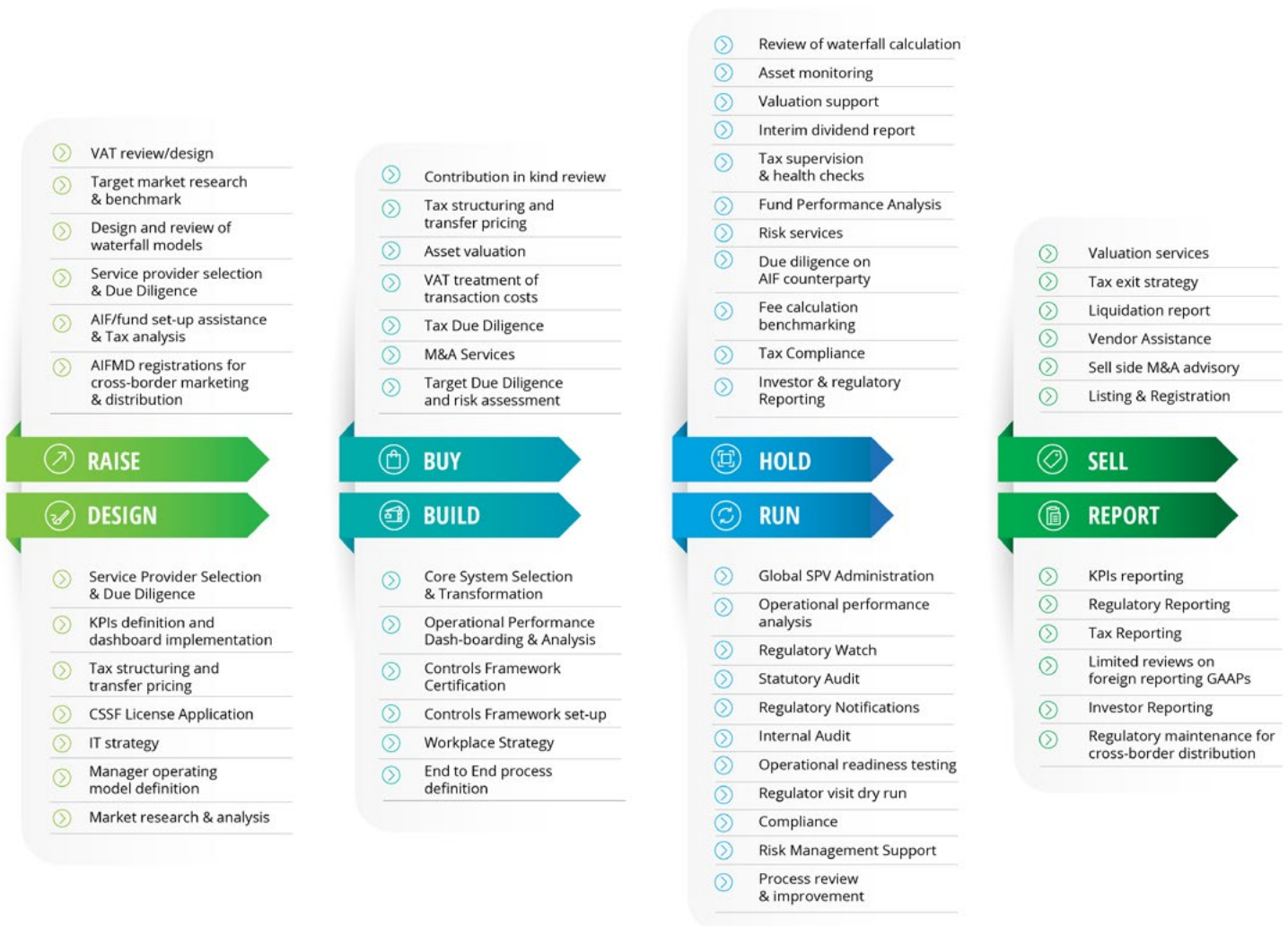
Fund
Lifecycle



Operation
Lifecycle



We pride ourselves in our ability to consistently deliver seamless, integrated global solutions in tax, consulting, and audit services. Our mission is to support you and your business to evolve and innovate; and rest assured that, as with all of our services, our pledge and commitment is to serve you with high quality end results.



Contacts



Nick Tabone

Partner - Private Equity Leader
+352 451 452 264
ntabone@deloitte.lu



Philippe Lenges

Partner - Private Equity Audit Leader
+352 451 452 414
plenges@deloitte.lu



Sophie Vanesse

Partner - Private Equity Tax Leader
+352 451 452 204
svanesse@deloitte.lu



Arnaud Bon

Partner - Alternatives Advisory & Consulting Leader
+352 451 454 165
abon@deloitte.lu

Deloitte.

Deloitte refers to one or more of Deloitte Touche Tohmatsu Limited (“DTTL”), its global network of member firms, and their related entities (collectively, the “Deloitte organization”). DTTL (also referred to as “Deloitte Global”) and each of its member firms and related entities are legally separate and independent entities, which cannot obligate or bind each other in respect of third parties. DTTL and each DTTL member firm and related entity is liable only for its own acts and omissions, and not those of each other. DTTL does not provide services to clients. Please see www.deloitte.com/about to learn more.

Deloitte provides industry-leading audit and assurance, tax and legal, consulting, financial advisory, and risk advisory services to nearly 90% of the Fortune Global 500® and thousands of private companies. Our professionals deliver measurable and lasting results that help reinforce public trust in capital markets, enable clients to transform and thrive, and lead the way toward a stronger economy, a more equitable society and a sustainable world. Building on its 175-plus year history, Deloitte spans more than 150 countries and territories. Learn how Deloitte’s approximately 457,000 people worldwide make an impact that matters at www.deloitte.com.

This communication contains general information only, and none of Deloitte Touche Tohmatsu Limited (“DTTL”), its global network of member firms or their related entities (collectively, the “Deloitte organization”) is, by means of this communication, rendering professional advice or services. Before making any decision or taking any action that may affect your finances or your business, you should consult a qualified professional adviser.

No representations, warranties or undertakings (express or implied) are given as to the accuracy or completeness of the information in this communication, and none of DTTL, its member firms, related entities, employees or agents shall be liable or responsible for any loss or damage whatsoever arising directly or indirectly in connection with any person relying on this communication. DTTL and each of its member firms, and their related entities, are legally separate and independent entities.