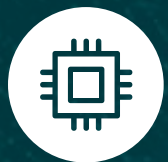




The dawn of ManCoTech IM Data Foundation





IM Data Foundation

To cope with growing regulatory requirements and their daily operational needs, management companies (ManCos) in Europe need to process multiple fund data sets across various sources and delegates, including fund administrators, transfer agencies and custodians.

However, most ManCos lack a centralized tool to effectively manage these incoming and outgoing fund data flows.

To help asset managers tackle these challenges, Deloitte offers a range of data management solutions tailored to the unique needs and setup of each investment manager in the industry.

The quality of the data collected, used and stored in your organization is key to the current and future success of your business. Having a holistic view of your delegate data reduces your risk exposure.



Your Challenges



Managing numerous data sets

ManCos' delegates send data in different formats and transmission channels.

Ensuring data quality and consistency

ManCos must ensure data is correctly treated along the entire value chain, from collection to internal consumption and external distribution.

Preserving golden data and distributing normalized data sets

ManCos must ensure that good quality reference data is maintained and that any mismatch is promptly identified and corrected, before being distributed through different transmission channels.



What IM Data Foundation does



Integrates data from delegates, distributors and other third-parties



Improves data quality



Reports on data quality exceptions through detailed logs and an automated dashboard



Fosters scalability and reduce time to market



Enhances regulator and investor confidence

IM Data Foundation: a unified data quality management platform

A concrete data management service with the right mix of people and technology is the best way to boost data quality and your organization's success



Data sourcing

For file type import sets, **you can select from several file retrieval methods** like Secure File Transfer Protocol (SFTP), File Transfer Protocol (FTP), application programming interface (API), and more.



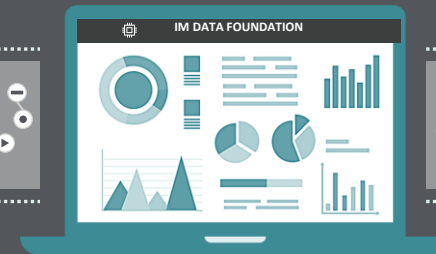
Data collection

Files and documents sourced include **static data, registration matrices, net asset value (NAV), portfolios, transactions, trial balances, general ledgers, etc.**



Data preparation, processing and governance

Sourced **raw data is cleaned and transformed** before it is **processed, validated and analyzed**. This involves reformatting and correcting data and combining data sets to enrich data.



Data consumption

Processed data is viewable through **dedicated dashboards or exception reports** to ease the decision-making process. Also, you can go one step further and **drill down into charts and graphs** for more detail and benefit from a **database-integrated audit mechanism**.



Data dissemination

Repurpose cleaned data to **regulators and stakeholders within your organization**.

How Deloitte can help you

Our service ranges from advising you on your ideal data management strategy to platform configuration or even operate the solution for you as a managed service

Operate service

Managed on your behalf by our Deloitte data stewards

Do-it-yourself

Powered by Deloitte but operated within your organization

Fully customized

Custom built to answer your organization's needs

Data sourcing

01

Set up robust technical data exchange channels with your delegate

Data collection

02

Monitor the vendor schedule and report delays
 Coordinate data issue management
 Optionally, contact your data vendors and request missing data

Data preparation, processing and governance

03

Clean, reformat and combine data sets to enrich source data
 Harmonize data into a cohesive data set
 Extract, transform and load source data
 Check data quality
 Consolidate quality indicators and detect and report exceptions

Data consumption

04

Provide access to dashboards and exception reports
 Track digital records through a native audit trail function

Data dissemination

05

Repurpose cleansed data sets to:

- Avoid erroneous reporting and inaccurate data-based decisions
- Disseminate data or feed other applications

We recommend the data management strategy most suited to you by assessing your organization against strategic metrics. Then, we determine your target investment management data model to:

- Centralize huge volumes of data; and
- Improve data quality when responding to investors and regulatory requirements

We can build a customized solution that is tailored to your organization's unique requirements.

Your contacts at Deloitte



Francois-Kim Huge
Partner
fkhuge@deloitte.lu
+352 451 452 483



Simon Ramos
Partner
siramos@deloitte.lu
+352 621 240 616



Arnaud Bouchain
Senior Manager
abouchain@deloitte.lu
+352 451 452 214



Patrick Laurent
Partner
palaurent@deloitte.lu
+352 621 198 584



Isabelle Pasque-Broset
Director
ipasquebroset@deloitte.lu
+352 451 452 760



Giuseppe Giancesini
Senior Consultant
ggiancesini@deloitte.lu
+352 451 452 428

Deloitte refers to one or more of Deloitte Touche Tohmatsu Limited (“DTTL”), its global network of member firms, and their related entities (collectively, the “Deloitte organization”). DTTL (also referred to as “Deloitte Global”) and each of its member firms and related entities are legally separate and independent entities, which cannot obligate or bind each other in respect of third parties. DTTL and each DTTL member firm and related entity is liable only for its own acts and omissions, and not those of each other. DTTL does not provide services to clients. Please see www.deloitte.com/about to learn more.

Deloitte is a leading global provider of audit and assurance, consulting, financial advisory, risk advisory, tax and related services. Our global network of member firms and related entities in more than 150 countries and territories (collectively, the “Deloitte organization”) serves four out of five Fortune Global 500® companies. Learn how Deloitte’s approximately 330,000 people make an impact that matters at www.deloitte.com.

This communication contains general information only, and none of Deloitte Touche Tohmatsu Limited (“DTTL”), its global network of member firms or their related entities (collectively, the “Deloitte organization”) is, by means of this communication, rendering professional advice or services. Before making any decision or taking any action that may affect your finances or your business, you should consult a qualified professional adviser.

No representations, warranties or undertakings (express or implied) are given as to the accuracy or completeness of the information in this communication, and none of DTTL, its member firms, related entities, employees or agents shall be liable or responsible for any loss or damage whatsoever arising directly or indirectly in connection with any person relying on this communication. DTTL and each of its member firms, and their related entities, are legally separate and independent entities.