



# **Deloitte CoE Key Accelerators**

Our key engagements across the globe supported by a quickly growing portfolio of accelerators

# Deloitte Migration Accelerator

- Deloitte Migration Accelerator (MA) is Deloitte proprietary migration and reconciliation toolset, designed and built with the main purpose of facilitating data transformation and its load to T24 Core Banking.
- It is an easy to use IT framework which can extract, transform, load data from multiple different landscapes within the Financial Services space and then reconcile the data between source and target.
- Most of the variable elements of particular migration are a subject of parameterization only, not coding.

## AIMED FOR T24

Deloitte Migration Accelerator's first and foremost goal is to facilitate data migration to T24 Core Banking System. It has been tailored to serve T24-target migrations with close-to-zero customizations.

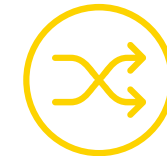


## BUILT BY PRACTITIONERS

Migration Accelerator has been designed by T24 experts to tackle pain points they faced during T24 specific migrations. Each functionality has been designed, built and proven to make T24-target migration easier.

## FLEXIBLE

Base functionalities of data transformation, load and reconciliation are shaped by parametrization which allows for immediate adjustment and increased alignment in dynamic environment of core banking transformation programs.



## PROVEN

Migration Accelerator has been successfully used in multiple complex migration cutovers.

# Benefits of leveraging our Migration Accelerator

## FLEXIBLE & LOW CODE

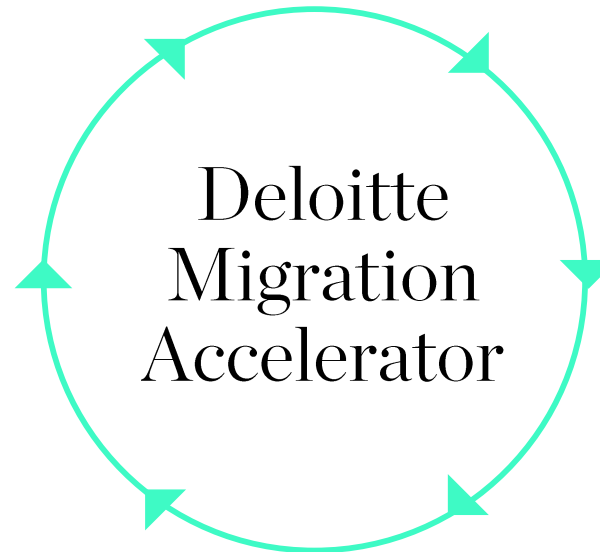
Migration Accelerator allows to deliver Transformation, Load and Reconciliation by parametrization. This in turn ensures that any amendments and adjustments in Migration flows are achievable rapidly in challenging and dynamic environment of large scale implementation projects.

## NO-LICENSE MODEL

Deloitte Migration Accelerator is not sold separately as licensed software; it serves as a tool supporting Migration services provided by Deloitte CoE in Poland. Such a model is cost-effective for the Bank as alternative to additional license costs indicated by third party ETL/Reconciliation software.

## T24 & MIGRATION DEDICATED

The tool has been designed and built with specific goal of facilitating data migration and data reconciliation with T24 Core Banking as a target system. Its functionalities are well tailored to cater for Migration in T24 implementation project with little to none customizations required, as opposed to more generic migration/ETL software packages.



## CUSTOMIZABLE

Deloitte invests in the tool and develops it basing on our Client's needs. In case of non-typical requirements going beyond typical migration and reconciliation functionalities the tool can be flexibly extended with additional project-specific features.

## ONE VENDOR, ONE SERVICE

Migration Accelerator is the tool facilitating migration service provided by Deloitte and therefore migration delivery may be treated as a monolith combining analytical, technical and software aspects. All of that is provided by Deloitte.

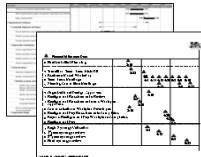
## PROVEN

The tool has been successfully used in multiple production migration spanning all core daily-banking and lending functionalities of T24 Core Banking.

# Deliverables and accelerators

## Program management and PMO

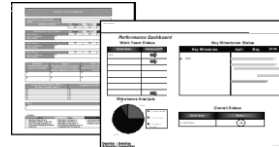
Detailed project work plans



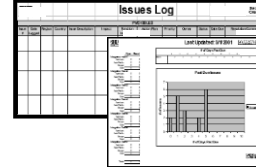
Executive dashboard



Status reports and tracking



Issues/actions item log



Project timeline and milestones



Day one functional checklists

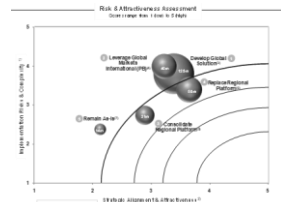


Budget

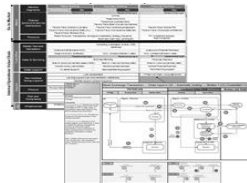


## DISCOVERY PHASE

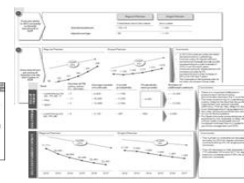
### Scope and target operating model



Strategic fit analysis



Operating model

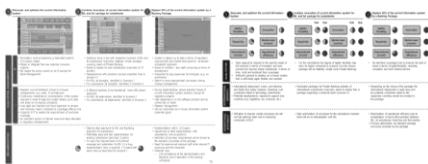


Analysis of key metrics

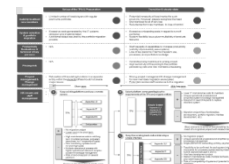


Application technology assessment

### Scope and target operating model

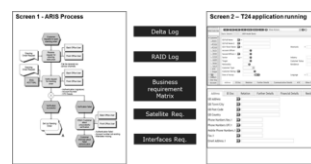


Scenario description



Scenario assessment

### Functional analysis and design



PLW Execution

## IMPLEMENTATION PHASE

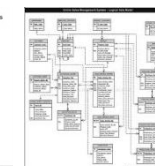
### Functional analysis and design



Parameterization file

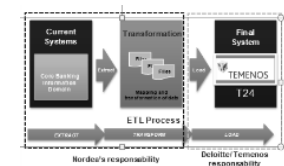


Business requirements



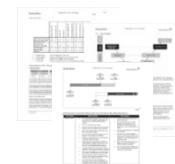
Functional specifications

### Data migration

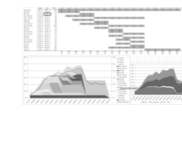


Data migration strategy

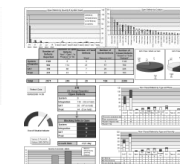
### Testing



Testing strategy



Test capacity plan



Test execution report

### Change management



Training plan and change management