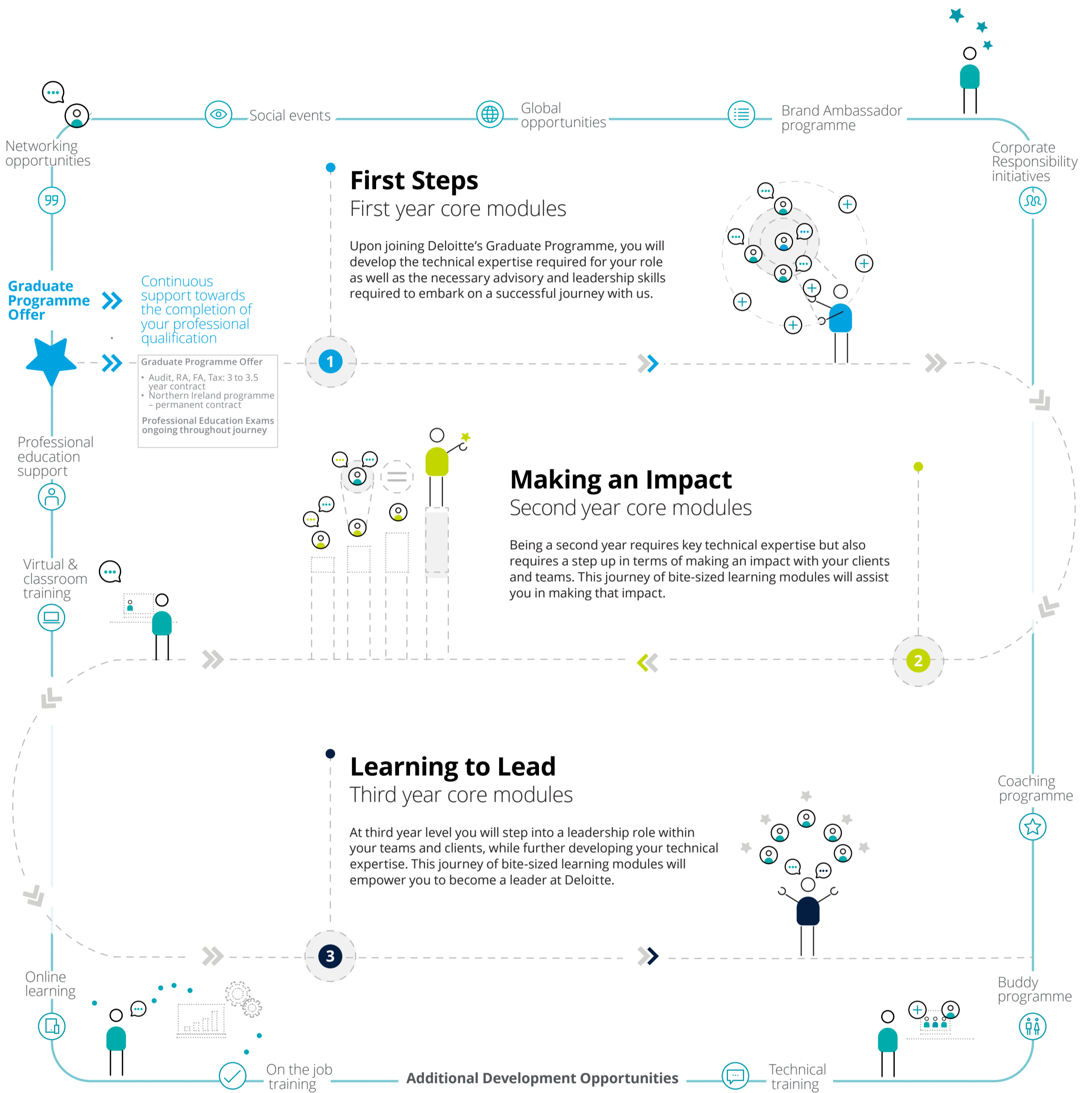


Deloitte Graduate Journey

Our Graduate Journey outlines the offerings of a graduate programme across Audit, Tax, Risk Advisory and Financial Advisory. At Deloitte our development is based on the 70:20:10 learning model, with on-the-job development forming 70% of our development, 20% is from social learning, coaching and mentoring and 10% through formal learning opportunities.



> [Apply now](#)

> Contact us: gradrecruitmentie@deloitte.ie

Deloitte
Graduate
Journey

Deloitte.