

Deloitte.



2025 Transparency Report

Deloitte Auditing and Consulting Ltd.

Date published 29 April 2026

Contents

Deloitte Auditing and Consulting Ltd. leadership message	1
Deloitte network	2
Deloitte Audit & Assurance: Our commitment to serving the public interest	6
External and internal quality monitoring	19
Independence, ethics, and additional disclosures	21
Appendices	25
Appendix A EU EEA audit firms	26
Appendix B Financial information	28
Appendix C Public interest entities	29

Deloitte Auditing and Consulting Ltd. leadership message¹

This report sets out the practices and processes that are currently employed by Deloitte Auditing and Consulting Ltd., in accordance with the requirements of Act LXXV of 2007 on the Chamber of Hungarian Auditors, the Activities of Auditors, and on the Public Oversight of Auditors and the European Union's Regulation 537/2014 on specific requirements regarding statutory audit of public-interest entities. All information provided in this report relates to the situation of Deloitte Auditing and Consulting Ltd. on 31 December 2025, except if indicated otherwise.



Trust and transparency are particularly critical in today's environment, when our clients are facing heightened uncertainty and challenges from a geopolitical, social, economic and regulatory perspective. At Deloitte, we remain committed to our public interest role, and this commitment is at the heart of all our activities, initiatives and investments.

The audit profession is also undergoing a profound transformation: the emergence of artificial intelligence, advanced data analysis, ESG reporting, and changes in regulatory frameworks are redefining what it means to be an auditor. These changes create an important responsibility for our profession and ourselves in how we shape development. Our approach is clear, investing in people, processes, and technology to be prepared to respond to the changing expectations of regulators, investors, businesses, and other stakeholders.

This year, we have further enhanced our Deloitte Omnia and Deloitte Levvia audit platforms and tools, enabling better insight and consistency, and ensuring that quality, independence and transparency remain at the heart of all our assignments. We will continue to incorporate artificial intelligence - including generative artificial intelligence -, into auditing, focusing on its ethical and responsible use for the benefit of both clients and our employees.

We are constantly expanding the expertise, knowledge and experience of our employees in order to create lasting value. We consider talent management, the training of our auditors and their career advancement to be an important task, supporting and empowering our employees to fully exploit their potential by creating an inclusive culture. And through our multidisciplinary model, we have a multitude of independent experts around the world who can be used on audit and other assurance engagements, providing expertise and a broad perspective.

Deloitte's top priority is quality. We continue to make significant investments in our quality management systems, in line with ISQM1, and are transparent about how we manage ourselves, how we react to audit results and how we interact with regulators.

Our 2025 Transparency Report provides in-depth insights into our structure, governance, and approach to delivering high-quality audits.

(electronically signed)

Gábor Molnár

Deloitte Auditing and Consulting Ltd.

¹ Throughout this report, the terms "Deloitte, we, us, and our" refer to one or more of Deloitte Touche Tohmatsu Limited, its network of member firms, and their related entities. For more information about the Deloitte network, please see page 3 or [About the network \(deloitte.com\)](#).

Deloitte network

Deloitte Auditing and Consulting Ltd.: legal structure and ownership

Deloitte Auditing and Consulting Ltd. is connected to the Deloitte network through Deloitte Central Europe Holdings Limited, a member firm of Deloitte Touche Tohmatsu Limited. Deloitte Central Europe Holdings Limited, together with Deloitte France, Deloitte Germany, Deloitte Luxembourg, Deloitte Austria, Deloitte Portugal and Deloitte Turkey, is a shareholder in Deloitte DCE GmbH (“DCE”), which is as well a member firm of Deloitte Touche Tohmatsu Limited. The object of DCE is fostering collaboration among its shareholders as members of the global Deloitte network. DCE neither provides any professional services nor engages in commercial activities. Deloitte Auditing and Consulting Ltd. is referred to throughout this report as “Deloitte Ltd.”. Deloitte Central Europe, as an organization of entities organized under the umbrella of Deloitte Central Europe Holdings Limited, is referred to throughout this report as Deloitte Central Europe”. Deloitte Central Europe Holdings Limited holds practice rights to provide professional services using the “Deloitte” name which it extends to Deloitte entities within its territory, including Deloitte Ltd.. Deloitte Ltd. (Registration number: 000083) is authorized to serve as an auditor for clients in Hungary.

Deloitte Auditing and Consulting Ltd. operates as a limited liability company established under Hungarian law, with its registered office at 1068 Budapest, Dózsa György út 84/C. It is incorporated by the Registry Court of the Metropolitan Court of Justice and its registration number is 01-09-071057.

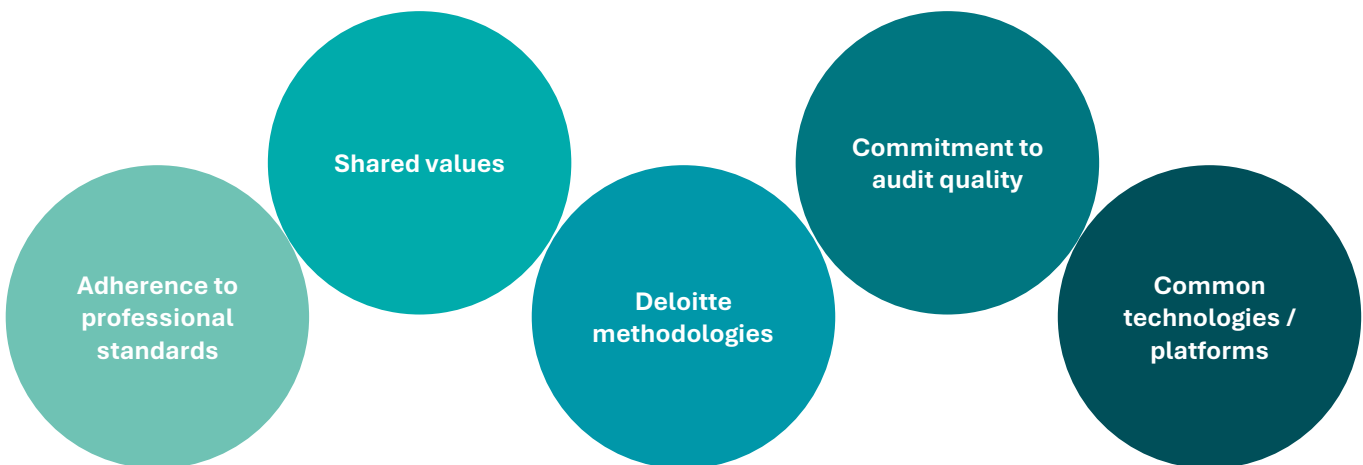
As of 31 December 2025, the registered capital and voting rights of Deloitte Auditing and Consulting Ltd. are held by:

- Deloitte Hungary Ltd.: 74.22% with 370 votes
- Deloitte Central Europe Shareholding Plc (a holding company registered in Cyprus): 24.28% with 120 votes and the following individuals:
 - Tamás Horváth (auditor, member of the Hungarian Chamber of Auditors): 0.75% with 270 votes
 - Gábor Molnár (auditor, member of the Hungarian Chamber of Auditors): 0.45% with 120 votes
 - Kornél Bodor (auditor, member of the Hungarian Chamber of Auditors): 0.3% with 120 votes.

Network description

The Deloitte network

The Deloitte network (also known as the Deloitte organization) includes a globally connected network of DTTL member firms and their respective related entities operating in more than 150 countries and territories across the world. These separate and independent member firms operate under a common brand, connected by:



Deloitte Touche Tohmatsu Limited (DTTL or Deloitte Global)

Deloitte Touche Tohmatsu Limited is a private company limited by guarantee incorporated in England and Wales. DTTL serves a coordinating role for its member firms and their respective related entities and establishes policies and protocols

with the objective of promoting a consistently high level of quality, professional conduct, and service across the Deloitte network. DTTL does not provide services to clients and does not direct, manage, or control any member firm or any of their respective related entities.

“Deloitte” is the brand under which approximately 470,000 dedicated professionals and practitioners in independent member firms (or their respective related entities) throughout the world collaborate to provide leading professional services to nearly 90% of the Fortune Global 500® and thousands of private companies. Our people deliver measurable and lasting results that help reinforce public trust in capital markets and enable clients to transform and thrive. These member firms are members of DTTL. DTTL, these member firms and each of their respective related entities form the Deloitte organization. Each DTTL member firm and/or its related entities provides services in particular geographic areas and is subject to the laws and professional regulations of the country or countries in which it operates. Each DTTL member firm is structured in accordance with national laws, regulations, customary practice, and other factors, and may secure the provision of professional services in its respective territories through related entities. Not every DTTL member firm or its related entities provides all services, and certain services may not be available to audit and assurance clients under the rules and regulations applicable to audit firms. DTTL, and each DTTL member firm and each of its related entities, are legally separate and independent, cannot obligate or bind any other, and are liable only for their own acts and omissions, and not those of any other. The Deloitte organization is a global network of independent firms and not a partnership or a single firm. DTTL does not provide services to clients.

Deloitte Ltd.: governance – leadership in action

Deloitte Auditing and Consulting Ltd.'s supreme decision-making body is the members' meeting, which decides about the most important matters concerning the entity. These matters are listed in the Articles of Association (the list is non-exhaustive). The members meeting convenes at least once a year.

The day-to-day management of Deloitte Ltd. is carried out by its executives (i.e. managing directors). The executives are responsible for the governance and oversight of the Audit & Assurance practice of Deloitte Ltd. Specific responsibilities include approving Deloitte Ltd.'s overall business strategy and preparing its annual accounts. The executives are independently authorized to represent Deloitte Ltd. before third persons, courts and other authorities and to sign individually on behalf of Deloitte Ltd.

Deloitte Ltd. does not have a Board of Directors or Supervisory Board in place.

The following are the Deloitte Ltd.'s executives who were appointed by the members' meeting:

Deloitte Auditing and Consulting Ltd. – Executives

Balázs Biró

Kornél Bodor (member of the Hungarian Chamber of Auditors)

Tamás Horváth (member of the Hungarian Chamber of Auditors)

Bálint Józán (member of the Hungarian Chamber of Auditors)

Eszter Józán-Demeter (member of the Hungarian Chamber of Auditors)

Sándor Laczka Dr.

Attila Molnár (member of the Hungarian Chamber of Auditors)

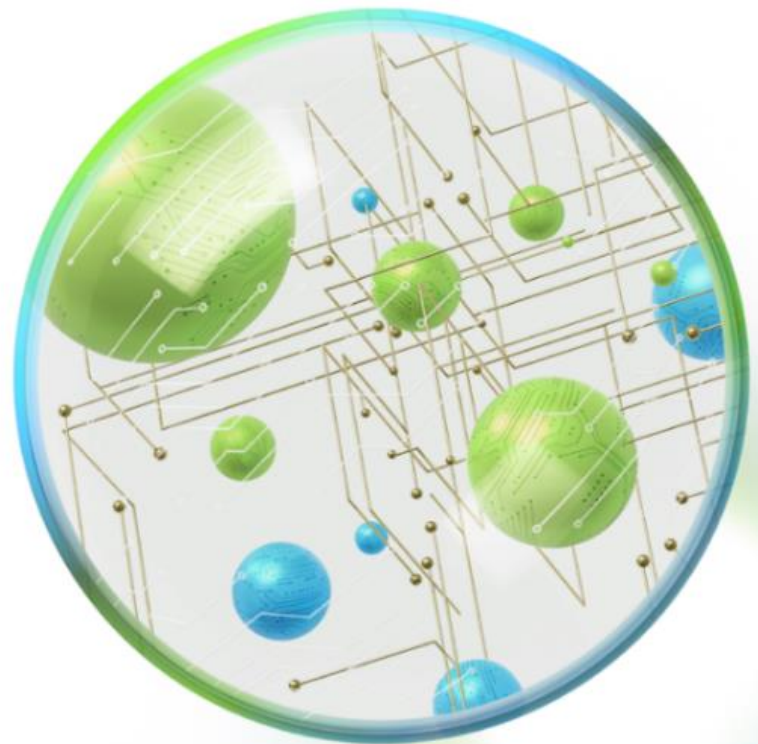
Gábor Molnár (member of the Hungarian Chamber of Auditors)

Péter Pádár (member of the Hungarian Chamber of Auditors)

Olga Shamrytska

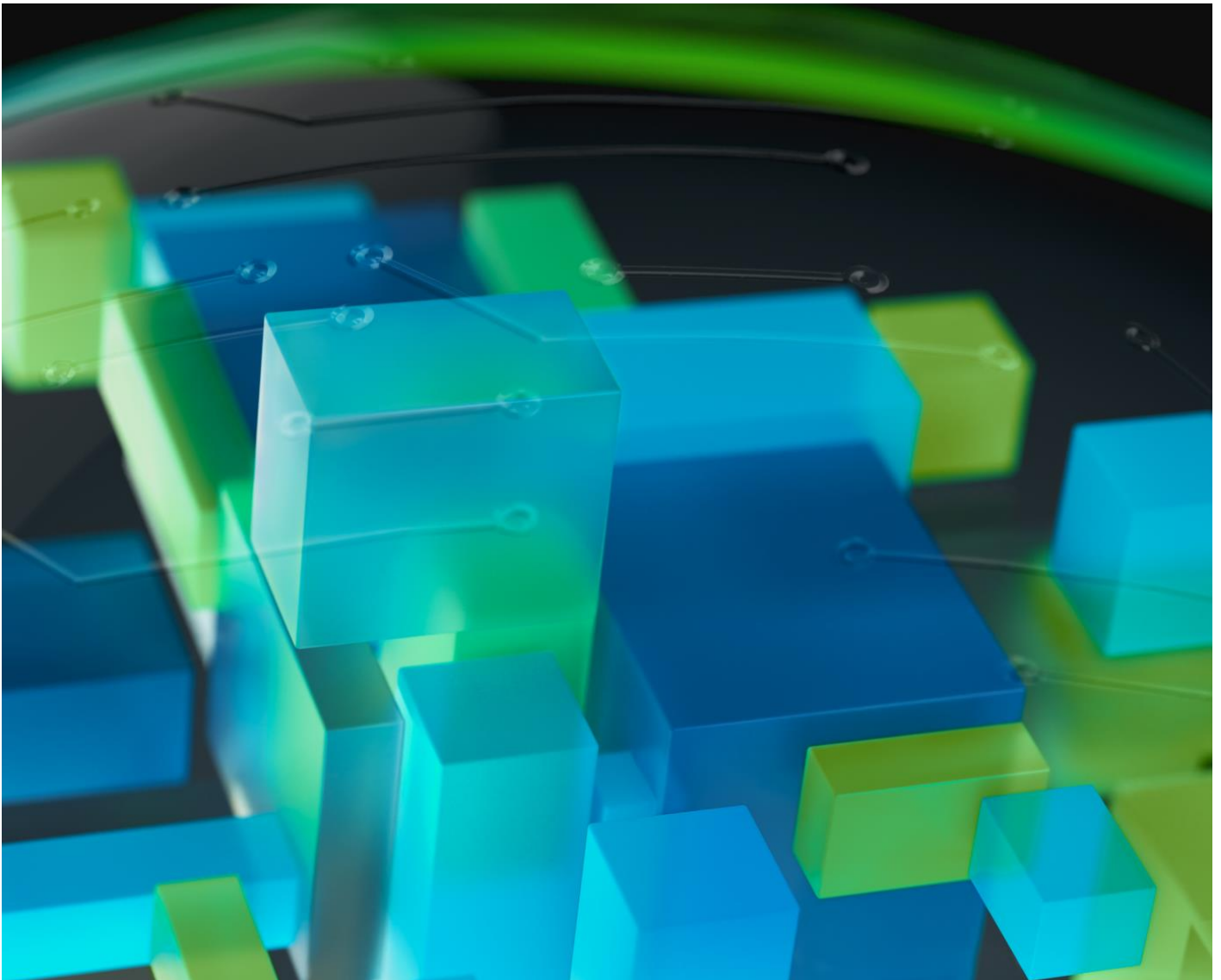
Gábor Molnár is appointed by Deloitte Ltd.'s executives as Partner in Charge (PIC) of the Audit & Assurance practice in Hungary. Gábor Molnár and senior management develop and implement the strategy for the Audit & Assurance practice, including related policies and procedures. In all their activities, Deloitte Ltd.'s senior leaders are responsible for the overarching objective of quality, including compliance with applicable professional standards and regulatory requirements. Deloitte Ltd.'s strategy is developed in alignment with the overall strategic direction established for the Deloitte network.

Deloitte Ltd.'s Audit & Assurance leaders participate in Deloitte network groups that set and monitor quality standards, and from which a number of quality, risk, and regulatory initiatives emanate.



Purpose-led and values driven: instilling trust and confidence

At Deloitte Ltd., our purpose is to make an impact that matters by helping to protect the public interest and building trust and confidence in business and capital markets. For Audit & Assurance, this means constantly evolving audit and assurance processes, leveraging leading-edge technology, applying a diversity of skillsets, knowledge, and experience to deliver high-quality services. We are committed to relentlessly raising the standards of quality and always acting with integrity, independence, and transparency. We are continuously building our capabilities to support the delivery of high-quality audit and assurance engagements and making leading contributions to shaping the future of the profession.



Deloitte Audit & Assurance: Our commitment to serving the public interest

A focus on quality

Deloitte's commitment to quality permeates everything we do. The independent audit is a central element of the corporate reporting ecosystem, in place to enhance the confidence and trust of investors and other stakeholders, as well as to promote the effective functioning of the capital markets. Deloitte is keenly aware of our obligation to deliver audit and assurance services that meet the challenges and complexities of the current environment while complying with professional and regulatory standards. For the corporate reporting ecosystem to function as intended, it is vital that the auditor's role be executed effectively.

Deloitte is committed to doing more than simply meeting regulatory requirements and conforming to expectations. Deloitte aims to set the standard of excellence for the profession. In keeping with that objective, our commitment to quality is unequivocal.

Deloitte Global leadership

The Deloitte Global Audit & Assurance Executive, which includes the Audit & Assurance Business Leaders from the member firms, is led by Jean-Marc Mickeler, the Deloitte Global Audit & Assurance Business Leader. His responsibilities include working with the member firms to define and drive the Audit & Assurance strategy. Key strategy areas of focus include:

- Building on Deloitte A&A's strengths in embedding quality excellence and technology-led transformation, to effectively deliver on the evolving needs of stakeholders relating to corporate reporting and the audit.
- Investing in the future, including enhancing the experience of Deloitte A&A's people and increasing collaboration across the organization to deliver on key focus areas such as GenAI, finance transformation, and sustainability.

The company we keep

As part of Deloitte's Audit & Assurance commitment to supporting the capital markets, we are focused on engaging with entities where it serves the public interest and where we have the capabilities to perform quality work objectively and in compliance with applicable professional standards and laws and regulations, including those relating to ethics and independence.

The company we keep is a critical foundational aspect of our Audit & Assurance strategy and global shared values that guide our behavior to lead the way, serve with integrity, take care of each other, foster inclusion, and collaborate for measurable impact. Our Audit & Assurance portfolio risk appetite statement can be used as a tool to promote robust discussion of risk, and as a basis upon which acceptance and continuance

decisions can be debated and challenged effectively and credibly. The statement sets the tone for our risk culture and aims to drive global consistency in the engagement acceptance and continuance decision making process.

Deloitte Ltd. has detailed policies and procedures in place for the acceptance of prospective clients, the continuance of existing engagements, and the assessment of engagement risk. These policies and procedures are designed with the objective that Deloitte Ltd. will only accept or continue with engagements where it:

- Is able to perform the engagement and has the capabilities, including time and resources, to do so.
- Can comply with all relevant professional standards and laws and regulations, including those relating to ethics, independence, and conflicts of interest assessments and considerations.
- Considers the client's management team to act with integrity and in alignment with our shared values.

Fewer, stronger member firms

Within the Deloitte member firm structure, Deloitte Ltd. is connected to Deloitte network through Deloitte Central Europe Holdings Limited member firm. As a locally registered and regulated audit firm in Hungary, we have decision-making authority regarding regulatory matters and professional obligations and maintain ultimate responsibility for the execution of audit and assurance services in accordance with professional standards and local laws and regulations. Deloitte Ltd. is responsible for maintaining and operating an effective system of quality management to support the performance of high-quality audit and assurance engagements. Acting as a part of the Deloitte network, we work in close cooperation with the other geographies in Deloitte Central Europe Holdings Limited member firm and benefit from additional oversight of quality, risk management, and monitoring activities. This structure fosters shared investment in innovation and resources as well as the sharing of leading practices across geographies, driving standardization and consistency across the audit and assurance business and contributing to our collective aspirations of continuous improvement in quality.



Multidisciplinary model (MDM)

Deloitte's MDM brings the breadth and depth of services across Deloitte's businesses, connecting many different disciplines to provide expertise and broad perspective. The MDM is a core strength of Deloitte and will remain the foundation of our strategy.

The span of change and complexity in the current external environment around the world highlight the value of Deloitte's MDM and is pivotal to delivering high-quality A&A work. The growth in Deloitte's non-A&A business lines results in higher quality resources available to the A&A practice, enabling transformation to drive enhancements in audit quality.

Specifically, the scope of corporate reporting is transforming with the emerging voluntary and mandatory disclosure requirements around ESG, cyber, AI, data privacy, and more. Deloitte prides itself on having a deep bench of independent specialists who can be deployed around the world on audit and assurance engagements to provide subject matter expertise and new, insightful perspectives.

Other strengths of the MDM include:

- The possibility to develop industry or thematic insights (e.g., climate, governance, corporate strategy, etc.) through multiple lenses, which enhances auditors' understanding of business risks relevant to conducting audit and assurance services.
- The breadth of the MDM creates richer career paths and mobility for our people making the business attractive to candidates who may not want to limit their career options to providing audit and assurance services only.
- The global scale of the MDM brings greater resilience to each Deloitte business line, including audit and assurance, allowing continued investment in technology, methodology, and process to support delivery of high-quality, cross-border services.

Deloitte leadership recognizes that each Deloitte business line is important to the organization's ability to deliver on its public interest responsibilities. Management's attention and investment allocation are not limited to the business lines with the highest growth rates.

Deloitte acknowledges the possibility and perception of conflicts of interest, and therefore has robust conflicts and independence policies and systems to help ensure that Deloitte's strategy is executed in alignment with regulatory and professional requirements.

While we are always evaluating ways to improve Deloitte's ability to deliver on our public interest mandate, we remain confident that Deloitte's MDM and our shared purpose and values make us well-positioned to navigate future challenges while continuing to lead with quality.

Our people’s commitment to integrity, to serve the public interest, and to deliver high-quality assurance over the areas that matter most to our stakeholders is at the core of everything we do.

Our unwavering dedication to quality drives our sustained quality leadership position. We remain focused on excellence across people, process, and technology. Each of these core components helps us to deliver our vision for a better future.

What does this look like? A constantly evolving audit and assurance practice, leveraging bright minds, effective processes, and world-class technologies from across our global organization while drawing on our years of experience. We deliver high-quality services in an efficient and effective way that upholds integrity, builds confidence, and drives value by focusing on what really matters.

The Audit & Assurance transformation and change strategy is focused on the following outcomes:

Transform and technology-enable A&A execution to harness the power of innovation	Continuously evolve Deloitte’s A&A solutions to respond to future stakeholder needs
Transform the talent experience including the use of extended delivery models	Support our people through transformation and change consistently across the globe

Delivering excellence through process, people, and technology transformation.²

Deloitte A&A’s ongoing investment in technology and transformation supports delivering high-quality audits, underpinned by our market-leading platforms, Deloitte Omnia and Deloitte Levvia. Deloitte Omnia is our cloud-based, end-to-end delivery platform for large and complex engagements, while Deloitte Levvia delivers a streamlined, right-sized digital experience for low-risk, less-complex entities.

Our technology and transformation capability also positions us to respond rapidly to new developments, such as GenAI and sustainability, while continuing to drive high-quality outcomes. We have established a mature and highly effective technology development and delivery capability, which will remain a critical enabler of transforming the way we plan and execute high-quality engagements. This, coupled with our global methodology and processes is the foundation for modernized delivery.

Our technology investments, help enable practitioners to execute engagements in a consistent and standardized manner, driven through digitized workpapers and methodology embedded into the platforms. Our technology platforms enhance supervision of an engagement with transparent oversight and real-time progress monitoring, providing access to the latest data and flagging areas for attention on a timely basis throughout the audit.

² For more information about Deloitte A&A audit innovation, please refer to the [Audit innovation](#) page on Deloitte.com.

Deloitte A&A's AI and GenAI strategy

Deloitte A&A is continuing to invest in artificial intelligence innovation, including Generative AI (GenAI), and we have already made significant progress on transforming the delivery of our work with our innovative technologies, Deloitte Omnia and Deloitte Levvia. These solutions, combined with our exceptional people and digitized processes, position Deloitte practitioners to apply these innovations in meaningful ways to a financial statement audit.

We are focused on ethical and responsible use of AI for both clients and our people:

- Within the entities Deloitte audits, we are evaluating the impact of AI and GenAI implementation on financial reporting and other disclosures, as well as the entity's assessment and response to AI-related risks (including related internal controls). As companies begin to adopt and incorporate AI into their business processes, we remain ready to consider relevant implications to the financial reporting processes.
- We are continuing to embed AI and GenAI in audits, consistent with applicable laws and professional standards, harnessing the power of cognitive technologies within the Deloitte Omnia and Deloitte Levvia platforms. We have several AI and GenAI-enabled solutions in use. Going forward, these innovative capabilities will further support Deloitte auditors in delivering high quality audits including further risk-sensing, identification of potential issues, and automation of certain processes. However, professional skepticism and the skill set that we rely on as auditors today will continue to be critical to responsible use and evaluation of AI and GenAI.
- Finally, Deloitte is investing in learning and development for Deloitte A&A practitioners and professionals, training them on the impact of GenAI, its risks, limitations, and expectations about how to use GenAI effectively and responsibly on their engagements.

Sustainability reporting

Sustainability matters continue to present risks and opportunities for businesses across sectors and geographies, giving rise to stakeholder demand for transparent disclosure and reporting. From a financial reporting perspective, Deloitte's audit approach is designed to promote consistent and appropriate consideration of sustainability-related risks and opportunities, which enables a deeper understanding of potential impacts on the financial statements and well-documented conclusions. We reinforce this with our people through learning, guidance, and various resources.

In the evolution from traditional financial reporting to broader corporate reporting, significant standard-setting activity has resulted in new or enhanced disclosure requirements. The IFRS Sustainability Disclosure Standards published by the International Sustainability Standards Board (ISSB) created a global baseline for sustainability reporting that is in various stages of adoption in jurisdictions across the globe. In Europe, we have seen the first wave of entities in scope of the Corporate Sustainability Reporting Directive (CSRD) publish comprehensive sustainability reporting in accordance with European Sustainability Reporting Standards (ESRS), and we are monitoring ongoing simplification efforts.

Deloitte is a strong advocate for decision-useful sustainability reporting and we continue to monitor regulatory developments in this space, recognizing the important role we play in active stakeholder engagement.

Sustainability assurance

Assurance over sustainability reporting is increasingly becoming mandatory in jurisdictions across the globe, with voluntary assurance also recognized as a valuable tool to instill trust in corporate sustainability reporting.

The demand for sustainability assurance highlights the importance of professional standards that enable consistent, high-quality execution globally.

Deloitte is well positioned to deliver high quality assurance on sustainability information. As auditors, we uphold the core tenets of integrity, credibility, and objectivity and abide by professional requirements regarding competence, independence, and systems of quality management. Our audit and assurance work and related systems are subject to oversight and inspection as well as professional liability mechanisms to ensure that credible assurance is delivered to the market.

Below are specific actions that Deloitte is undertaking to support execution of high-quality assurance services that appropriately address both voluntary sustainability reporting and mandatory reporting requirements:

- Developing and enhancing Deloitte's global sustainability assurance methodology, which includes supplemental guidance and resources for specific sustainability reporting standards and frameworks. In particular, we have supplemented our global sustainability assurance methodology with guidance, tools, and templates specific to the performance of limited assurance over CSRD sustainability reporting.
- Building capacity through global and localized learning focused on sustainability reporting and assurance topics.
- Developing and deploying technology-enabled solutions, such as sustainability disclosure checklists.
- Leveraging our global network and MDM to share subject matter knowledge and experience.
- Engaging to shape the capital market infrastructure for sustainability reporting tied to enterprise value through collaboration on standard setting, reporting, and assurance initiatives, such as the IFRS Foundation, the IAASB, and the International Ethics Standards Board for Accountants (IESBA).
- Deloitte Ltd's professionals taking an active role in the development and delivering of the professional training program for the special auditors' sustainability certification required for the assurance examination of sustainability reports, in cooperation with the Hungarian Chamber of Auditors.

Deloitte supports the continued collaboration of all participants in the corporate reporting ecosystem, working together to develop and implement common standards upon which to measure, disclose, and ultimately assure sustainability information.

Professional development and performance management

Deloitte’s culture of excellence and the design of learning programs place people at the forefront³. Deloitte practitioners are technically proficient with high levels of ethics, integrity, professional skepticism, and objectivity, applying their judgment and experience with passion and commitment. We are continuously enhancing our skillsets, knowledge, and experience to deliver meaningful impact.

Deloitte is committed to delivering an unrivalled talent experience, developing practitioners, and furthering their careers by creating a life-long learning environment—advancing education, skillsets, and flexible career options that appeal to auditors of today and tomorrow.

Deloitte practitioners bring diverse backgrounds, knowledge, and skills that enhance capabilities as an organization in delivering the highest quality. We support and empower all our people to achieve their full potential by fostering an inclusive culture that helps them thrive.

Deloitte recognizes and rewards its Audit & Assurance practitioners and professionals and makes meaningful investments in their futures.



³ For more information about Deloitte’s commitment to its people, please refer to [Our People](#) on Deloitte.com.

Learning and development initiatives

Deloitte's transformed approach to delivery is changing the experience for practitioners. Teams are empowered by advanced tools and technologies and extensive use of data and analytics within a guided workflow to execute the end-to-end audit. For Deloitte practitioners, this means focusing on how the engagement is planned, executed, and managed consistently across the globe using our innovative techniques and capabilities. It also offers opportunities to enhance their technical and professional skillsets and competencies. The following skills remain as important as ever—enhanced data analytics, project management, critical thinking, communication, professional judgment, and the application of accounting and auditing principles to work effectively and deliver high-quality engagements. As capabilities and skillsets are enhanced, we build greater confidence and become ever-better evaluators of risk.

Deloitte has made substantial investments in talent and learning strategies and transformed the technical curriculum to build the refreshed skillsets and proficiency required by level:

- At the core, Deloitte has a single, global mandatory audit technical learning curriculum, tailored for learners by level, using a dynamic blend of live instructor-led, digital on-demand courses, and on-the-job activities.
- All client service practitioners are required to follow the firm's learning requirements for their roles and complete sufficient continuing professional education (CPE) each year and over a cyclical three-year period to ensure both compliance with regulatory standards and Deloitte internal policies. This is achieved through structured, formal learning programs, such as internal or external courses, seminars, or e-learning covering all areas of the competency model (e.g., shared competencies, function-specific technical competencies, and competencies in areas of specialization).
- All client service practitioners have clearly defined role expectations and global Talent Standards which outline the capabilities that are required of practitioners at each level.

Aligned to Deloitte A&A's efforts to deliver a more skills-focused career experience, we are prioritizing learning modernization by providing experiences that are skills-based, tailored, and relevant for practitioners and professionals in their specific roles.

Deloitte has also established specific learning opportunities for specialists working on engagements to support their knowledge and understanding. In addition, our Assurance learning offering is being expanded to respond to emerging business needs.

The objective of the Deloitte Ltd.'s professional development program is to help partners and practitioners maintain and enhance their professional competence and ensure consistency of execution. To supplement on-the-job development, Deloitte Ltd. provides formal continuing professional development programs in relevant subject areas consistent with the Deloitte Global Audit & Assurance Curriculum.

In addition to continuous internal training programs, registered statutory auditors are required to participate in mandatory annual training courses organized by the Hungarian Chamber of Auditors and to obtain credit scores required for each year

Deloitte University

Deloitte actively cultivates the collective knowledge and skills of Deloitte people globally through continued investment in Deloitte Universities (DU), the cornerstone of our organization's commitment to leadership development and technical training for Deloitte people around the world. These are state-of-the-art learning and development centers focused on Deloitte culture and founded in the principles of connectedness and leadership in a highly inclusive learning environment⁴. Since opening the Westlake, Texas location in 2011, we've launched additional facilities in Beijing, Brussels, Hyderabad, Mexico City, Paris, Singapore, and Toronto. Being together for "moments that matter" is critical as we develop the next generation of leaders, as well as create—and strengthen—the connections that are so important to succeeding in a global organization serving multinational clients.

In the last reporting year, Deloitte Central Europe practitioners spent a total of 238.490 training hours on learning and development.

⁴ Please refer to Deloitte.com for more information about [Deloitte Universities](#)

Audit & Assurance Leadership appointments

Critical Audit & Assurance leadership roles are clearly defined. A role profile and key performance indicator framework provide a basis for consistent leadership appointments and evaluations across the Deloitte Audit & Assurance network, enabling alignment of member firm and Deloitte Global Audit & Assurance strategic objectives. Deloitte maintains globally consistent standards for member firm Audit & Assurance leaders, including Audit & Assurance Business Leaders, Audit & Assurance Quality Leaders, and Audit & Assurance Risk Leaders through clearly defined roles, responsibilities, and expected success outcomes. These inform objective setting and evaluation processes and reinforce Deloitte's culture of quality and excellence. Robust monitoring of succession planning helps ensure Deloitte is developing and appointing the appropriate individuals with the capabilities to achieve these consistent standards.

Remuneration

Execution of high-quality is expected from all practitioners and is embedded across the Deloitte network. This is recognized through reward and recognition programs and is built into performance standards at every level, against which practitioners' overall evaluations are measured.

In accordance with Deloitte policies, Deloitte Ltd.'s partners are evaluated on a yearly basis, and depending on the outcome of the evaluation, the remuneration of partners may increase or decrease. Specifically, partner evaluations take the following factors into account: quality evidenced through positive practice review or external inspection results, expertise, integrity, professionalism, entrepreneurship, independence and compliance.

Attraction and retention

The current environment for talent is extremely competitive and attraction and retention of our people is a strategic priority for Deloitte. We are focused on transforming the Audit & Assurance talent experience, including reimagining the ways of working to improve retention and further advance our inclusive culture and the well-being of all Deloitte people. We are continuously looking at opportunities to collectively enhance the talent experience. This focus on our people and retention of top talent Deloitte's ability to deliver high-quality.

Deloitte continues to receive recognition and awards across the globe for its commitment to delivering an unrivalled talent experience for its people [Awards and recognition | Deloitte Global](#).

Deloitte's priority focus on quality

Deloitte's commitment to quality is central to everything we do. We consistently deliver on this commitment by instilling a culture of quality, integrity, and excellence across the network, establishing business and financial priorities, and developing effective processes, tools, and technologies applied in the execution of engagements. Deloitte's brand is defined by the high-quality audit and assurance services delivered and by the unwavering commitment to continuous improvement of our systems of quality management. Keeping pace with emerging economic, business, and regulatory conditions, as well as technological advances, is critical to the continual enhancement of Deloitte's role in protecting the public interest and supporting the effective functioning of the corporate reporting ecosystem.



Leadership commitment and tone at the top

Deloitte's culture of quality, integrity, and excellence begins with a strong tone from the top—from senior leadership through to the leaders in all our offices and audit and assurance engagements. This commitment is demonstrated through the direct involvement of leaders in initiatives emphasizing that quality and professional behavior is the highest priority for audit and assurance practitioners at all levels and consistent messaging that reinforces the importance placed on executing high-quality engagements. Deloitte sets high ethical standards for the conduct of all its professionals and embeds integrity expectations into the Deloitte Global Principles of Business Conduct.

Deloitte's relentless pursuit of quality defines not just what we do, but who we are.

System of quality management (SQM)

Deloitte believes an effective SQM is crucial for the consistent performance of high-quality engagements, and we continue to make significant investments in our people, processes, and technologies that underline Deloitte's quality management processes.

Regulators and standard setters in Hungary and globally are also focused on the effectiveness and continued improvements in firms' SQMs. Deloitte Ltd. complies with ISQM 1 which requires annual evaluation of the SQM.

ISQM 1 introduces a risk-based approach to the SQM that require firms to respond to quality objectives and risks to our ability to execute high-quality audits in the following areas:

- The firm's risk assessment process;
- Governance and leadership;
- Relevant ethical requirements;
- Acceptance and continuance of client relationships and specific engagements;
- Engagement performance;
- Resources;
- Information and communication; and
- The monitoring and remediation process.

The effective implementation of ISQM 1 has been and remains a key element of Deloitte's global audit and assurance quality strategy.

As part of the implementation of ISQM 1, quality objectives, quality risks and responses were formalized and brought together in a globally consistent technology platform to facilitate the design and maintenance of the system, as well as the operation through tri-annual self-assessments by business process owners and reporting capabilities to support the required annual evaluation.

Deloitte Ltd. continues to work with leaders across the firm, as well as the broader network, to further enhance our proactive approach to managing the quality of engagements performed—identifying and addressing risks to quality and driving continued advancements in quality management processes serves us well into the future as the environment within which we operate continues to evolve and become increasingly complex.

Consistent with Deloitte's culture of continuous improvement and innovation, Deloitte Ltd.'s efforts relating to ISQM 1 and our SQM provide us the opportunity to continually challenge ourselves—examining those areas where we can further enhance and transform our SQM. Quality is always front and center, and robust quality monitoring processes play an integral role in our ability to continually improve.

ISQM 1 requires at least an annual evaluation of the SQM. In 2025 Deloitte Ltd. conducted two evaluations of its quality management system—an initial assessment as of 31 May 2025 and a subsequent evaluation as of 30 September 2025.

Deloitte Ltd. is preparing for the upcoming Public Company Accounting Oversight Board's standard on a Firm's System of Quality Control (QC 1000) and believes this continues to strengthen the firm's SQM.

Conclusion on the effectiveness of the SQM

- Statement on the effectiveness of its functioning

Deloitte Ltd. is responsible for designing, implementing, and operating a SQM for audits or reviews of financial statements, or other assurance or related services engagements performed by the firm, that provides the firm with reasonable assurance that the objectives of the SQM are being achieved. The objectives are:

- The firm and its personnel fulfill their responsibilities in accordance with professional standards and applicable legal and regulatory requirements, and conduct engagements in accordance with such standards and requirements; and
- Engagement reports issued by the firm or engagement partners are appropriate in the circumstances.

Deloitte Ltd. conducted its evaluation in accordance with the ISQM 1.

Deloitte Ltd. concluded that the SQM provides the firm with reasonable assurance that objectives of the SQM **are being achieved as of end of May 2025 and end of September 2025.**

Reasonable assurance is obtained when the SQM reduces to an acceptably low level the risk that the objectives of the SQM are not achieved. Reasonable assurance is not an absolute level of assurance, because there are inherent limitations of a system of quality management.

Independence, objectivity, and professional skepticism

The execution of high-quality audit and assurance engagements requires independence, objectivity, and professional skepticism. This means a continuous and tangible focus on Deloitte's critical role in serving the public interest, including creating a culture of quality where doing the right thing is of paramount importance. Deloitte consistently reinforces the important role of auditors as independent evaluators who must maintain a mindset of professional skepticism throughout the conduct of our work. This approach is reflected in Deloitte policies, methods, procedures, and learning, and is reinforced through quality management and accountability measures.

Audit & Assurance approach

Deloitte's approach to performing a high-quality engagement involves the use of audit and standards-based assurance methodologies, common across the Deloitte network, supplemented by tools for use by our practitioners to plan, perform, supervise, review,

document, conclude, and communicate the results of each engagement. Deloitte's approach is underpinned by professional standards, as well as the requirements of applicable laws and regulations.

Deloitte's audit methodology is risk-based, focusing on the financial statement account balances, disclosures, and underlying assertions that have a reasonable possibility of being materially misstated. Our methodologies are also dynamic—it evolves continuously to keep pace with the changing demands of investors, companies, and other stakeholders. It recognizes that advances in the availability and management of large data sets, in statistical science as well as GenAI are relevant to continuing to enhance the quality of Deloitte engagements.

Resources to support Deloitte practitioners in the execution of high-quality engagements

The resources applied by Deloitte practitioners in the performance of their work include the proprietary tools, guidance, materials, and practice aids used in conducting engagements, which are available to all our practitioners in the Deloitte Research Portal an extensive online library, and in our audit execution platforms (such as Deloitte Omnia and Deloitte Levvia). These resources drive greater standardization and consistency across Deloitte firms. Deloitte regularly issues guidance to our practitioners and communicates developments that should be factored into audit risk assessments and responses in order to maintain and drive quality execution.

Consultation

Quality and risk management considerations are integral to Deloitte’s audit and assurance business and to the performance of engagements. That is why Deloitte views consultation as an essential, collaborative process—one that involves robust challenge and helps determine the most appropriate answers to complex questions. Deloitte has identified circumstances where consultation outside of the engagement team is required in order to demonstrate an appropriate level of professional judgment and the exercise of professional skepticism. Deloitte consultation policies require that conclusions are documented, understood, and implemented. Foundational to the effectiveness of the consultation process is Deloitte’s investment in consultation resources who have the appropriate skills and expertise. In addition to formal consultations, whenever engagement partners and teams need additional information or perspectives, they are encouraged to seek assistance from the quality and risk management teams, or others in the organization with specialized knowledge.



External and internal quality monitoring

Monitoring of quality

A continued focus on quality is of paramount importance to the Deloitte brand. It is critical that a Deloitte engagement is consistently executed and of high-quality, wherever in the world it is performed.

The objective of monitoring and remediation processes are to provide relevant, reliable, and timely information about the design, implementation, and operation of the SQM to leadership in order to enable appropriate and timely actions to be taken to respond to identified deficiencies. This includes the identification of deficiencies and good practices in the SQM and the assessment of the effectiveness of remedial actions in driving improvements in audit quality.

SQM monitoring

SQM monitoring is an integral part of Deloitte Ltd.'s monitoring activities and considers relevant requirements in ISQM 1, as well as evaluating the design, implementation and operating effectiveness of responses that address the quality risks that have been identified for the firm.

Key components of SQM monitoring include:

- Risk-based approach to selecting business processes, quality risks and responses to monitor.
- Mandatory moderation panel to drive consistency in evaluating findings and deficiencies.
- Identifying appropriate resources (from within Deloitte Ltd. as well as from other Deloitte geographies or Deloitte Global) with the right experience.

Monitoring of in-process engagements

Continuous quality monitoring by Deloitte Ltd. involves the proactive identification of issues on in-process engagements in order to drive timely solutions and real time corrective actions. This is achieved through the following suite of activities:

- Deployment and monitoring of a series of core diagnostics, enabling engagement partners and teams, as well as Deloitte Ltd.'s audit and

assurance quality leaders to continuously monitor quality and take immediate action.

- A program of subject matter specific “health checks” to assist Deloitte Ltd.’s audit and assurance quality leaders in assessing progress and identifying potential issues on in-process engagements.
- Results of monitoring of in-process engagements are evaluated overall to determine whether additional communication and support is needed for engagement teams with respect to adherence to the methodology or updates thereto.

Inspections of completed engagements

Key components of inspections of completed engagements include:

- Risk-based engagement selection and consideration of all major industries served by Deloitte Ltd. while considering all signing partners or partner equivalents on a cyclical basis.
- Mandatory moderation panel to drive consistency in findings and engagement ratings.
- Identifying appropriate resources (from within Deloitte Ltd., as well as from other Deloitte geographies or Deloitte Global) with the right experience and industry knowledge.

External inspections

In addition to Deloitte Ltd.’s own monitoring of quality, we are subject to external monitoring by the Auditors’ Public Oversight Authority and the Chamber of Hungarian Auditors.

Auditors' Public Oversight Authority reviews registered statutory auditors who perform audits of public interest entities on a three-year cycle, the Chamber of Hungarian Auditors reviews the registered statutory auditors on a six-year cycle.

The last quality assurance review referred to in Article 26 of the European Union's Regulation 537/2014 on specific requirements regarding statutory audit of public-interest entities was carried out by the Auditors' Public Oversight Authority in 2024, and their Inspection Resolution was issued on 18 December 2024.

In 2025, Auditors' Public Oversight Authority carried out engagement level quality assurance reviews of three statutory registered auditor of Deloitte Ltd. and the Chamber of Hungarian Auditors carried out engagement level quality assurance reviews of one statutory registered auditors of Deloitte Ltd.

Root cause analysis and remediation

Continuous improvement is essential to Deloitte's culture of quality and excellence. Understanding why engagement level findings and SQM deficiencies occur is critical to being able to design effective remedial actions. When engagement level findings or SQM deficiencies are identified, whether through internal or external monitoring activities, actions are taken to identify gaps and develop appropriate remediation activities. Remediation is imperative to drive continuous improvement in quality and avoid future similar findings. An audit quality plan provides for effective implementation and monitoring of key audit quality priorities.

Anonymous complaints reporting system

In addition to the key aspects of quality monitoring and SQM described above, Deloitte Ltd. provides an anonymous [Speak Up](#) platform for reporting complaints or ethical issues in relation to services provided. This platform is available to both Deloitte and non-Deloitte personnel.

Time allocation

In the last reporting period, Deloitte Central Europe including Deloitte Ltd. invested total of 11,634 hours on activities related to monitoring and remediation, emphasizing their dedication and strategic focus to quality.

Independence, ethics, and additional disclosures

Deloitte Global Independence



Sets **independence policies and procedural expectations** based upon the Code of Ethics for Professional Accountants issued by the International Ethics Standards Board for Accountants and, where applicable, the independence standards of the US Securities and Exchange Commission and the Public Company Accounting Oversight Board.

Supports network services that a firm uses in the design, implementation, and operation of their system of quality management, including:



Technological resources: Global systems to provide its people with entity information to support compliance with personal and professional independence requirements, including financial interests, scope of service approvals.

Intellectual resources: Independence policy, e-learning, monitoring instructions and other tools, templates, and guidance.

Human resources: Technical independence expertise, as required, which also informs potential enhancements to intellectual resources.



Supports various elements of a firm's **system of quality management** monitoring and remediation process, as determined to be appropriate.



Promotes **independence awareness** across the Deloitte network through active engagement with independence and business leadership groups and periodic communications, alerts, technical training, and webcasts.

Deloitte Ltd. Independence

Deloitte Ltd. has quality responses that address quality objectives and quality risks as they relate to the relevant ethical requirements for independence. These responses include policies and procedures that are based on expectations set out in Deloitte Global Independence policies, and which are supplemented, as appropriate, to reflect additional national or regional requirements that may be more restrictive than Deloitte Global policies. Deloitte Ltd.'s leadership reinforces the importance of compliance with independence and related quality management standards, thereby setting the

appropriate tone at the top and instilling its importance into the professional values and culture of Deloitte Ltd.. Strategies and procedures to communicate the importance of independence to partners, other practitioners, and support staff have been adopted, emphasizing each individual's responsibility to understand and meet the independence requirements. The Director of Independence is responsible for overseeing independence matters within Deloitte Ltd., including the design, implementation, operation, monitoring, and maintenance of the system of quality management related to independence.

As part of the firm’s system of quality management, Deloitte Ltd. has:

- Implemented responses to address quality objectives and quality risks it has identified for its key independence areas;
- Performed appropriate monitoring activities over its key independence areas; and
- Has appropriate independence governance in place.

The firm’s key independence areas include:

- Client, engagement, and business relationships, including use of the independence business process tools, the Deloitte Entity Search and Compliance (DESC) system, and the Service Request Monitoring (SRM) application
- Firm and personal financial relationships, including the use of the Global Independence Monitoring System (GIMS)
- Employment and other relationships
- Independence confirmations
- Independence consultations
- Independence-related policies, communications, and learning
- Breaches of independence requirements
- Disciplinary measures for failures to adhere to applicable independence requirements



DESC

Deloitte Entity Search and Compliance

Global, searchable database containing specific entity information relevant in determining personal and professional independence restrictions



SRM

Service Request Monitoring

Application integrated with DESC that provides a standard business process workflow for submitting and reviewing preapproval requests to provide services to clients



GIMS

Global Independence Monitoring System

Application that contains financial relationship data with relevant independence compliance indicators

Long association requirements of audit partners and practitioners

Deloitte Ltd. maintains policies and procedures requiring rotation of key audit partners and staff. These differ for a public interest entity as defined in the relevant Hungarian regulations (the “EU PIE”) or entities defined as a public interest entity by Deloitte Ltd. (“other PIE”). Individuals responsible for carrying out a statutory audit should not serve an EU PIE for more than seven consecutive years in the position of a key audit partner. They shall not participate again in the statutory audit of the audited EU PIE entity before at least three years have elapsed following cessation of such service. In case of other PIE, individuals responsible for carrying out a statutory audit should not serve other PIE for more than seven consecutive years in the position of a key audit partner. They shall not participate again in the statutory audit of the audited other PIE entity before five, three or two years have elapsed following cessation of such service, depending on the key audit partner role in such audit. During the cooling-off period, the key audit partner should not participate in the audit of the audited entity, perform the engagement quality control review, consult with the engagement team or the audited entity regarding technical or industry-specific issues, transactions or events or otherwise directly influence the outcome of the statutory audit.

While it is the primary responsibility of the individuals serving as key audit partners to ensure they comply with the rotation requirements, Deloitte Ltd. implemented a monitoring process that includes among other analysis of client portfolios and individuals assigned in various roles to statutory audits and considering appropriate competence, capability, workload and availability of statutory auditors so as to enable these individuals to adequately discharge their responsibilities as key audit partners.

Ethics

All Deloitte people are expected to act with integrity in accordance with high ethical standards as described in the Deloitte [Global Principles of Business Conduct](#) (“Global Code”). The Global Code is embedded into each member firm’s Code of Conduct and defines the commitments that all Deloitte people make regarding ethical standards, as well as explaining each individual’s responsibilities to their clients, colleagues, and society.

In addition to the Global Code, other foundational elements of Deloitte’s ethics program include global policies, a program of training and communications, and established reporting channels supported by defined incident management protocols. For continuous improvement, regular program assessments and reviews are conducted, and feedback is collected from Deloitte people through an annual ethics survey.

Ethics at Deloitte is led by the Deloitte Global Chief Ethics Officer at the global level, and by member firm Ethics Officers at the local level, all of whom are experienced partners with direct access to the member firm’s CEO and governing body. Deloitte Global and member firm ethics leaders work together to continually monitor risk and to reinforce compliance with the Global Code.

Deloitte Ltd. maintains policies and procedures that build on global policies and are designed to provide reasonable assurance that its people comply with relevant ethical requirements.

The ethical requirements for audit and related assurance services provided by Deloitte Ltd. are in accordance with the national professional requirements. Deloitte Ltd. also complies with Deloitte Global policies and procedures, which align

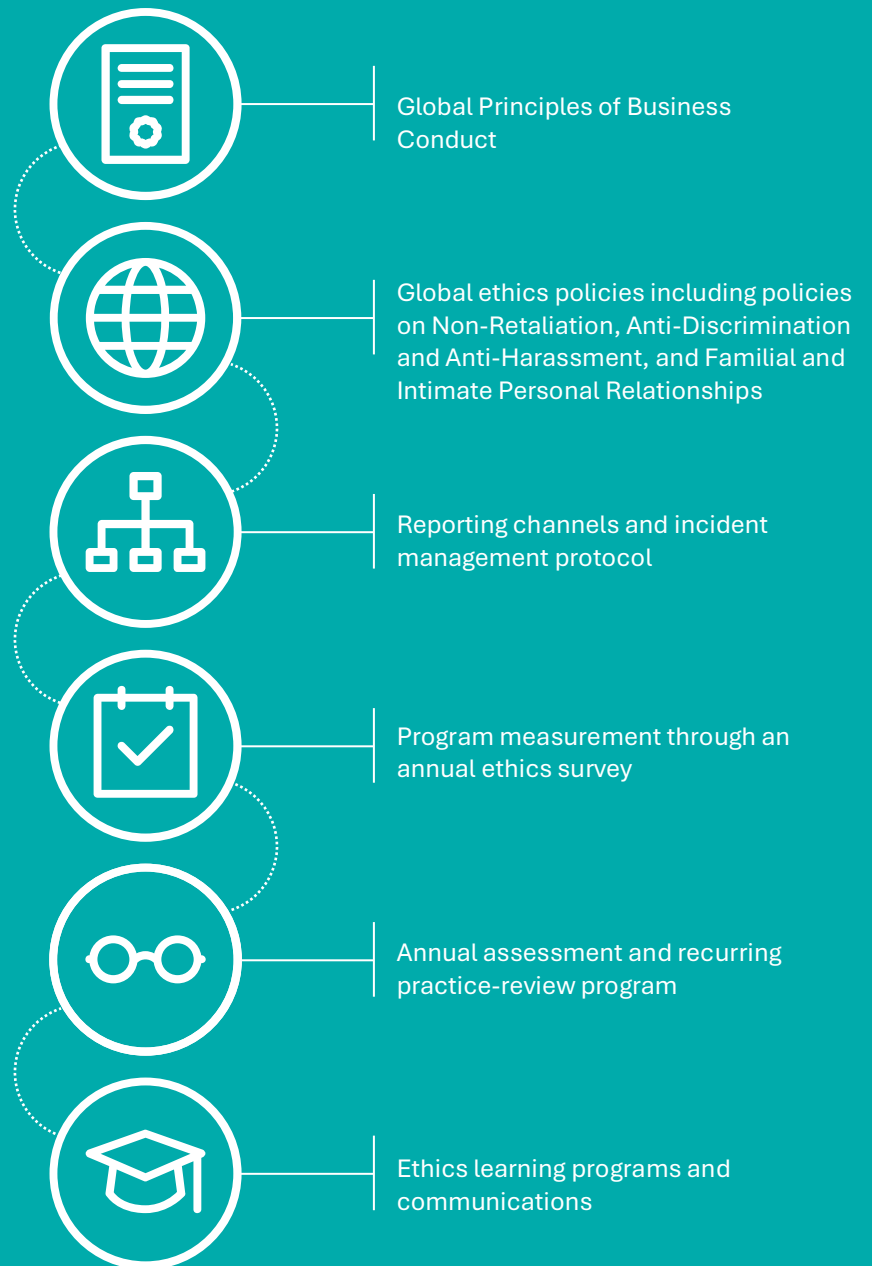
with the requirements and guidance set out in the international Code of Ethics for Professional Accountants issued by the International Ethics Standards Board for Accountants, a standard-setting body of the International Federation of Accountants (IFAC). When [the national professional requirements] are more restrictive than the Deloitte Global policies and procedures, Deloitte Ltd. follows the applicable national requirements.

Deloitte Ltd. reinforces its commitment to ethics and integrity through communication tools, learning programs, compliance processes, and measurement systems for all people. Learning includes targeted content for onboarding, manager and senior manager promotion, partner admission, independent contractors, and refresher programs at least every two years. Recent global training topics have included a focus on the importance of owning up to one’s mistakes, being an active bystander, navigating personal relationships in the workplace, demonstrating respect, integrity and professionalism on social media, ethical learning, and appropriate use of Generative AI, and courses have included a confirmation that professionals are aware that answers should not be shared with others and doing so would constitute a violation of the Global Code. In addition, Deloitte Ltd. conducts ethics reviews of senior leaders and requires all partners, other practitioners, and support staff to confirm annually that they have read and comprehended the member firm’s Code of Conduct and understand that it is their responsibility to comply with it.

Deloitte Global Ethics

Deloitte is committed to conducting business with honesty, distinctive quality, and high standards of professional behavior.

Deloitte’s Global Principles of Business Conduct (“Global Code”) outlines Deloitte’s ethical commitments as a network and expectations for Deloitte’s approximately 470,000 people, giving a strong, principled foundation. The foundations of the network’s ethics program are comprised of the following elements:



Appendices

Appendix A | EU EEA audit firms

Disclosure in accordance with Article 13.2 (b)(ii)-(iv) of the EU Audit Regulation

EU/EEA member state (Article 13.2 (b)(iii) EU Audit Regulation: the countries in which each audit firm that is a member of the network is qualified as a statutory auditor or has its registered office, central administration, or principal place of business)

Name of audit firms carrying out statutory audits in each member state (Article 13.2 (b)(ii) EU Audit Regulation: the name of each audit firm that is a member of the network)

EU/EEA member state	Name of audit firms carrying out statutory audits in each member state
Austria	Deloitte Audit Wirtschaftsprüfungs GmbH
	Deloitte Niederösterreich Wirtschaftsprüfungs GmbH
	Deloitte Oberösterreich Wirtschaftsprüfungs GmbH
	Deloitte Salzburg Wirtschaftsprüfungs GmbH
	Deloitte Tirol Wirtschaftsprüfungs GmbH
	Deloitte Wirtschaftsprüfung Styria GmbH
Belgium	Deloitte Bedrijfsrevisoren/Réviseurs d'Entreprises BV/SRL
Bulgaria	Deloitte Audit OOD
Croatia	Deloitte d.o.o. za usluge revizije
Cyprus	Deloitte Limited
Czech Republic	Deloitte Audit s.r.o.
	Deloitte Assurance s.r.o.
Denmark	Deloitte Statsautoriseret Revisionspartnerselskab
Estonia	AS Deloitte Audit Eesti
Finland	Deloitte Oy
France	Deloitte & Associés
	Deloitte Marque & Gendrot
	Deloitte Audit Holding
	BEAS
	Constantin Associés
	Pierre-Henri Scacchi et Associés
Revi Conseil	
Germany	Deloitte GmbH Wirtschaftsprüfungsgesellschaft
	Deutsche Baurevision GmbH Wirtschaftsprüfungsgesellschaft
	SüdTreu Süddeutsche Treuhand GmbH Wirtschaftsprüfungsgesellschaft
Greece	Deloitte Certified Public Accountants S.A.
Hungary	Deloitte Könyvvizsgáló és Tanácsadó Kft.
Iceland	Deloitte ehf.
Ireland	Deloitte Ireland LLP
Italy	Deloitte & Touche S.p.A.

EU/EEA member state	Name of audit firms carrying out statutory audits in each member state
Latvia	Deloitte Audits Latvia SIA
Liechtenstein	Deloitte (Liechtenstein) AG
Lithuania	UAB Deloitte Lietuva
Luxembourg	Deloitte Audit
Malta	Deloitte Audit Limited
Netherlands	Deloitte Accountants B.V.
Norway	Deloitte AS
Poland	Deloitte Audyt spółka z ograniczoną odpowiedzialnością spółka komandytowa
	Deloitte Audyt spółka z ograniczoną odpowiedzialnością
	Deloitte Assurance Polska spółka z ograniczoną odpowiedzialnością spółka komandytowa
	Deloitte Assurance Polska spółka z ograniczoną odpowiedzialnością
Portugal	Deloitte & Associados, SROC S.A.
Romania	Deloitte Audit SRL
Slovakia	Deloitte Audit s.r.o.
Slovenia	Deloitte Revizija d.o.o.
Spain	Deloitte Auditores, S.L.
Sweden	Deloitte AB

Disclosure in accordance with Article 13.2 (b)(iv) of the EU Audit Regulation

The total turnover achieved by the audit firms that are members of the network, resulting from the statutory audit of annual and consolidated financial statements: €2.2 billion⁵

⁵ Amount represents an estimate determined based upon best efforts to collect this data. Certain Deloitte audit firms registered to perform statutory audits in respective member states provide statutory audit services as well as other audit, assurance, and non-audit services. While Deloitte endeavored to collect specific statutory audit turnover for each EU/EEA Deloitte audit firm, in certain cases turnover from other services has been included. The turnover amounts included herein are as of 31 May 2025, except for a limited number of instances where a Deloitte audit firm has different financial year-end or has not finalized its reporting for such period. In these cases, turnover amounts are for the relevant financial year or preceding financial year. Where currency other than the Euro is used in the member state, the amount in Euros was translated using an average exchange rate in effect for the period 1 June 2024 to 31 May 2025.

Appendix B | Financial information

Disclosure in accordance with Article 13.2 (k)(i)-(iv) of the EU Audit Regulation

The breakdown of the Deloitte Auditing and Consulting Ltd.'s 2025 non-audited turnover:

Turnover	ThHUF
Statutory audit* (PIEs or PIE subsidiaries)	3,857,173
Statutory audit* (non-PIEs or non-PIE subsidiaries)	4,253,306
Non-audit services (audited entities)	1,151,808
Non-audit services** (other entities)	1,482,056
Total	10,744,343

* Statutory audit includes both Hungarian statutory audits and audits of financial information used by parent companies outside Hungary for their statutory financial statements. This category includes revenues that otherwise would be regarded to be „Revenues from permitted non-audit services to statutory audit clients” but where the work is also used for the purpose of the statutory audit or cannot be separated from it.

**Services other than statutory audit to other entities include audit and other assurance services to clients other than statutory audit clients, other service fees and mediated services.

Deloitte Auditing and Consulting Ltd. does not provide tax advisory services.

Appendix C | Public interest entities

Disclosure in accordance with Article 13.2 (f) of the EU Audit Regulation

Public interest entities audited for statutory purposes by Deloitte Auditing and Consulting Ltd. in the financial year 2025:

ANY Biztonsági Nyomda Nyrt.

BNP Paribas Cardif Biztosító Magyarország Zrt.

BNP Paribas Cardif Életbiztosító Magyarország Zrt.

Groupama Biztosító Zrt.

KDB Bank Európa Zrt.

Magyar Telekom Nyrt.

MOL Nyrt.

MVM Zrt.

Raiffeisen Bank Zrt.

Richter Gedeon Nyrt.

Deloitte.

Deloitte refers to one or more of Deloitte Touche Tohmatsu Limited (DTTL), its global network of member firms, and their related entities (collectively, the “Deloitte organization”). DTTL (also referred to as “Deloitte Global”) and each of its member firms and related entities are legally separate and independent entities, which cannot obligate or bind each other in respect of third parties. DTTL and each DTTL member firm and related entity is liable only for its own acts and omissions, and not those of each other. DTTL does not provide services to clients. Please see www.deloitte.com/about to learn more.

Deloitte provides industry-leading audit and assurance, tax and legal, consulting, financial advisory, and risk advisory services to nearly 90% of the Fortune Global 500® and thousands of private companies. Our people deliver measurable and lasting results that help reinforce public trust in capital markets, enable clients to transform and thrive, and lead the way toward a stronger economy, a more equitable society, and a sustainable world. Building on its 175-plus year history, Deloitte spans more than 150 countries and territories. Learn how Deloitte’s approximately 457,000 people worldwide make an impact that matters at www.deloitte.com.

In Hungary the services are provided by Deloitte Auditing and Consulting Limited (Deloitte Ltd.), Deloitte Advisory and Management Consulting Private Limited Company (Deloitte Co. Ltd.) and Deloitte CRS Limited (Deloitte CRS Ltd.) (jointly referred to as “Deloitte Hungary”) which are affiliates of Deloitte Central Europe Holdings Limited. Deloitte Hungary is one of the leading professional services organizations in the country providing audit, tax, risk, advisory and consulting services through over 1,000 national and specialized expatriate professionals. Legal services to clients are provided by cooperating law firm Deloitte Legal Gündöcz and Partners Law Firm.

This communication contains general information only, and none of Deloitte Touche Tohmatsu Limited (“DTTL”), its global network of member firms or their related entities (collectively, the “Deloitte organization”) is, by means of this communication, rendering professional advice or services. Before making any decision or taking any action that may affect your finances or your business, you should consult a qualified professional adviser.

No representations, warranties or undertakings (express or implied) are given as to the accuracy or completeness of the information in this communication, and none of DTTL, its member firms, related entities, employees or agents shall be liable or responsible for any loss or damage whatsoever arising directly or indirectly in connection with any person relying on this communication. DTTL and each of its member firms, and their related entities, are legally separate and independent entities.