

Deloitte.



CE Automotive Newsletter June 2026

A new era of work in the automotive industry: technology alone is not enough, job redesign is decisive

Automotive companies are heavily investing in new technologies — yet the expected impact often falls short. Why? The answer lies not in the tools themselves, but in how work is designed. This article shares practical examples and explains why work redesign and adoption are critical to unlocking real value from technology investments.

[Read more](#)

Road transport in the EU on the threshold of a new decade: what it means for automotive in Central Europe

Europe's road transport is entering a decisive decade. Rising regulation, rapid tech shifts and Chinese competition are reshaping the rules of the game - putting Central Europe under pressure to accelerate electrification while staying competitive. Who will win? Those who move fastest on BEV, cost optimisation and new mobility models.

[Read more](#)

TMT Predictions 2026

AI is no longer just a future promise — it is becoming the engine of today's transformation. Deloitte's *TMT Predictions 2026* shows how organisations are moving beyond experimentation toward real, scalable impact — and why the next wave of change will be less visible, but far more disruptive.

The study highlights:

- AI finally delivering at scale, as companies shift from prototypes to real-world deployment
- the rise of agentic AI, autonomously handling tasks and reshaping digital operations
- TMT emerging as a key driver of economic growth across industries
- rapid expansion of AI infrastructure, with data centres becoming a major economic force



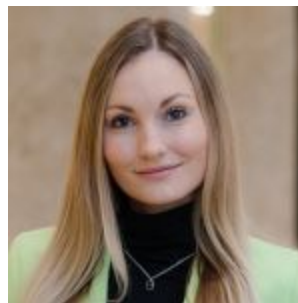
Why it matters:

Organisations are doubling down on AI-ready infrastructure, secure architecture, and practical implementation. The message is clear: the winners won't be those who experiment — but those who actually scale. And TMT capabilities are becoming the backbone for transformation across sectors from manufacturing to mobility

[Read the full TMT Predictions 2026 study.](#)



Milan Kulhánek
Partner, Central Europe
Automotive Leader



Monika Melčáková
Central Europe Automotive
Business Development - PMO

Prague | Czech Republic
mkulhanek@deloittece.com

Prague | Czech Republic
mmelcakova@deloittece.com



Churchill I
Italská 2581/67
120 00 Prague 2
Czech Republic

© 2026. See [Terms of Use](#) for more information.

Deloitte refers to one or more of Deloitte Touche Tohmatsu Limited (“DTTL”), its global network of member firms, and their related entities (collectively, the “Deloitte organization”). DTTL (also referred to as “Deloitte Global”) and each of its member firms and related entities are legally separate and independent entities, which cannot obligate or bind each other in respect of third parties. DTTL and each DTTL member firm and related entity is liable only for its own acts and omissions, and not those of each other. DTTL does not provide services to clients. Please see [this page](#) to learn more.

[Home](#) | [Add Deloitte as safe sender](#)

This email is commercial communication of Deloitte, which you subscribed to.

You can change your preferences [HERE](#). | You can unsubscribe [HERE](#). | General Information on Data Processing for the purposes of marketing, distribution of commercial communication and/or organization of events [HERE](#).