

CE Automotive Newsletter

April 2026

AI Transformation: AI agents save companies time, money, and human resources

AI is no longer a future concept - it is already transforming how leading organizations operate. From cutting costs and automating routine tasks to freeing employees for more strategic work, AI agents are delivering measurable business impact today.

This article shares real-world examples: UNHCR using AI across 137 countries, Sanofi targeting €1.3 billion in savings by replacing core systems, and EnBW shifting up to 50% of computer-based work to AI.

A compelling read for anyone exploring how AI can turn efficiency gains into competitive advantage.

[Read more](#)

CBAM in Automotive: When the Cost of Imports Is Felt in Every Bolt

A new cost factor is entering the automotive industry — and it could be hidden in every imported bolt, wheel, or steel frame.

From 2026, CBAM moves into its payment phase, bringing new carbon costs to many materials and components imported into the EU. For automotive companies, this means growing pressure on sourcing, margins, and supplier decisions.

Our latest article reveals how CBAM will impact automotive supply chains, which imports are exposed, and what smart businesses are doing now to stay ahead.

[Read more](#)

Human Capital Trends 2026

Companies are being pushed to move faster than ever - but most aren't built for speed. According to Deloitte's Human Capital Trends 2026, the real challenge isn't just adopting new technologies, but redesigning how work, people, and systems come together.

The study uncovers:

- why 70% of leaders see speed as critical - yet struggle to achieve it
- the growing disconnect between leadership expectations and employee reality
- why coordinating work, workforce, and technology is becoming a core capability
- how organisations can build a true competitive edge beyond technology



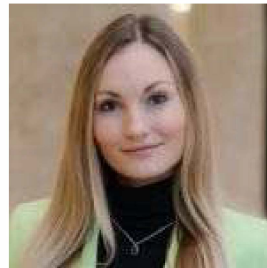
Where are organisations falling behind – and what separates leaders from the rest

[Read the full Deloitte Human Capital Trends 2026 study.](#)



Milan Kulhánek
Partner, Central Europe
Automotive Leader

Prague | Czech Republic
mkulhanek@deloittece.com



Monika Melčáková
Central Europe Automotive
Business Development - PMO

Prague | Czech Republic
mmelcakova@deloittece.com



Churchill I
Italská 2581/67
120 00 Prague 2
Czech Republic

© 2026. See [Terms of Use](#) for more information.

Deloitte refers to one or more of Deloitte Touche Tohmatsu Limited (“DTTL”), its global network of member firms, and their related entities (collectively, the “Deloitte organization”). DTTL (also referred to as “Deloitte Global”) and each of its member firms and related entities are legally separate and independent entities, which cannot obligate or bind each other in respect of third parties. DTTL and each DTTL member firm and related entity is liable only for its own acts and omissions, and not those of each other. DTTL does not provide services to clients. Please see [this page](#) to learn more.

[Home](#) | [Add Deloitte as safe sender](#)