



CE Automotive Newsletter

March 2025

Transformation of Warehouses and Manufacturing: How Humanoid Robots Will Change Automotive Supply Chains

Discover the transformative power of humanoid robots in automotive supply chains, as this article explores their potential to revolutionize warehouses and manufacturing. Learn about key industry players like BMW, Mercedes-Benz, and Tesla, who are at the forefront of integrating these advanced robots to enhance efficiency, reduce errors, and overcome workforce shortages. The article delves into the benefits of humanoid robots—from stabilizing staffing levels to allowing resource reallocation for greater challenges. It also offers insights into effective integration strategies, including feasibility studies, technology selection, employee training, safety measures, and process optimization. Embrace this technological revolution and discover how proactive implementation can modernize operations, drive cost savings, and secure a competitive edge. Explore the essential steps to successfully integrate humanoid robots into your business and unlock new opportunities for innovation and growth. Don't miss out on understanding how this emerging technology can fortify your supply chain and propel your company into the future.

[Read more](#)

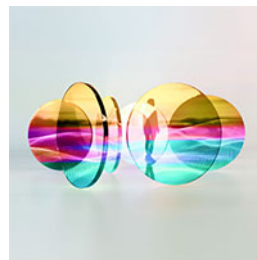
The NIS2 Directive: Implications for the Automotive Sector

Discover how the European NIS2 Directive can transform the automotive industry's approach to cybersecurity, offering a strategic opportunity beyond mere compliance. This article delves into the directive's key changes, including enhanced risk management and stricter incident reporting, and highlights their significant implications for automakers and suppliers. Learn how proactive implementation can not only protect against cyber threats but also secure critical data, foster customer trust, and provide a competitive edge. Explore essential steps for compliance and turn regulatory challenges into opportunities for innovation and market leadership. By embracing NIS2, automotive companies can fortify their digital and physical assets, ensuring resilience in an increasingly connected world.

[Read more](#)

Deloitte Tech Trends 2025

As every year, the Deloitte Tech Trends report is a must-read for any executive looking to lead their firm into the future. Spoiler alert – one of the 16 tech trends includes humanoid robots. Another trend worth mentioning is Agentic AI, which refers to artificial intelligence systems that can make autonomous decisions and take actions without human intervention.

[Click here for more insights!](#)

Team



Milan Kulháněk
Partner, Central Europe
Automotive Leader

Prague | Czech Republic
mkulhanek@deloittece.com



Diana Hassmannová
Central Europe Automotive
Business Development - PMO

Prague | Czech Republic
dhassmannova@deloittece.com



Churchill I
Italská 2581/67
120 00 Prague 2
Czech Republic

© 2025. See [Terms of Use](#) for more information.

Deloitte refers to one or more of Deloitte Touche Tohmatsu Limited ("DTTL"), its global network of member firms, and their related entities (collectively, the "Deloitte organization"). DTTL (also referred to as "Deloitte Global") and each of its member firms and related entities are legally separate and independent entities, which cannot obligate or bind each other in respect of third parties. DTTL and each DTTL member firm and related entity is liable only for its own acts and omissions, and not those of each other. DTTL does not provide services to clients. Please see [this page](#) to learn more.

[Home](#) | [Add Deloitte as safe sender](#)

This email is commercial communication of Deloitte, which you subscribed to.

You can change your preferences [HERE](#). | You can unsubscribe [HERE](#). | General Information on Data Processing for the purposes of marketing, distribution of commercial communication and/or organization of events [HERE](#).