



**Find your way in the tax  
regulatory compliance maze**

Taxparency

[www.deloitte.com/ch/taxparency](http://www.deloitte.com/ch/taxparency)

**Tax***parency*

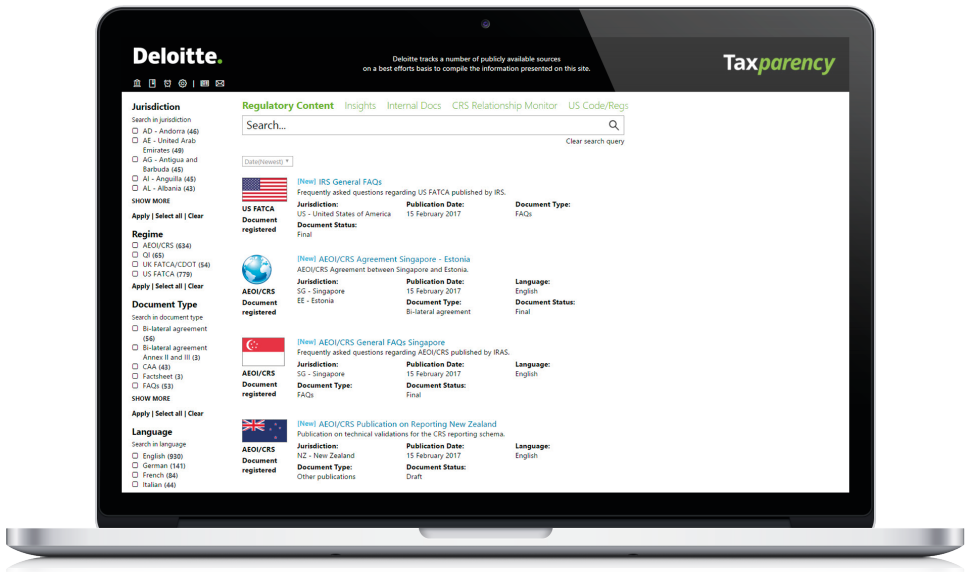
# Contents

The big picture	<b>01</b>
Business challenges	<b>02</b>
Taxparency – Deloitte response	<b>04</b>
Subscription model	<b>06</b>
Regulatory content	<b>07</b>
Deloitte insights	<b>08</b>
CRS relationship monitor	<b>09</b>
Client benefits	<b>10</b>
Key contacts	<b>11</b>

# The big picture

## One mouse click away

Intuitive search, filtering, sorting by relevance or date



"Before I started using Taxparency, I struggled to find the most up-to-date version of guidance – and I was never sure that I really had found the most recent version!"

**Client, Swiss bank**

# Business challenges

## Too much, too complex and not connected

### Multiple regimes and jurisdictions

The exchange of account and financial information across borders with the objective of tax transparency is the new reality. The Common Reporting Standard (CRS) builds on the Foreign Account Tax Compliance Act (FATCA) and exponentially increases the complexity given the multilateral nature of this regime. FATCA and the Qualified Intermediary (QI) regimes continue in parallel requiring alignment. In combination with multiple jurisdictions it is difficult to keep an overview of all relevant documents and perform cross-jurisdiction or cross-regime analysis.

### Locate and access

There is no central location or “golden source” for the key documents with publications from local tax authorities, regulators, other governmental bodies as well as industry groups and a global financial institution needs to constantly monitor numerous sources.

### Regulatory change management

A global financial institution must manage regulatory change, properly manage risks, run the business, and operate in a profitable way.

1

2

3





7

### **Operational consequences**

Complex business rules emerge based on the development of local rules and the global network.

6

### **Dynamic global network**

Bi- and multilateral agreements create more than 1,000 relations that require close monitoring as these frequently develop.

5

### **Documents labyrinth**

Regulatory documents are lengthy, multiple versions exist and they are cross-referenced throughout different documents.

4

### **Tax subject matter**

Ensuring the correct tax technical interpretations requires access to a central repository of relevant and current information, skilled internal resources, and qualified advisors.

# Taxparency – Deloitte response

## Three main components

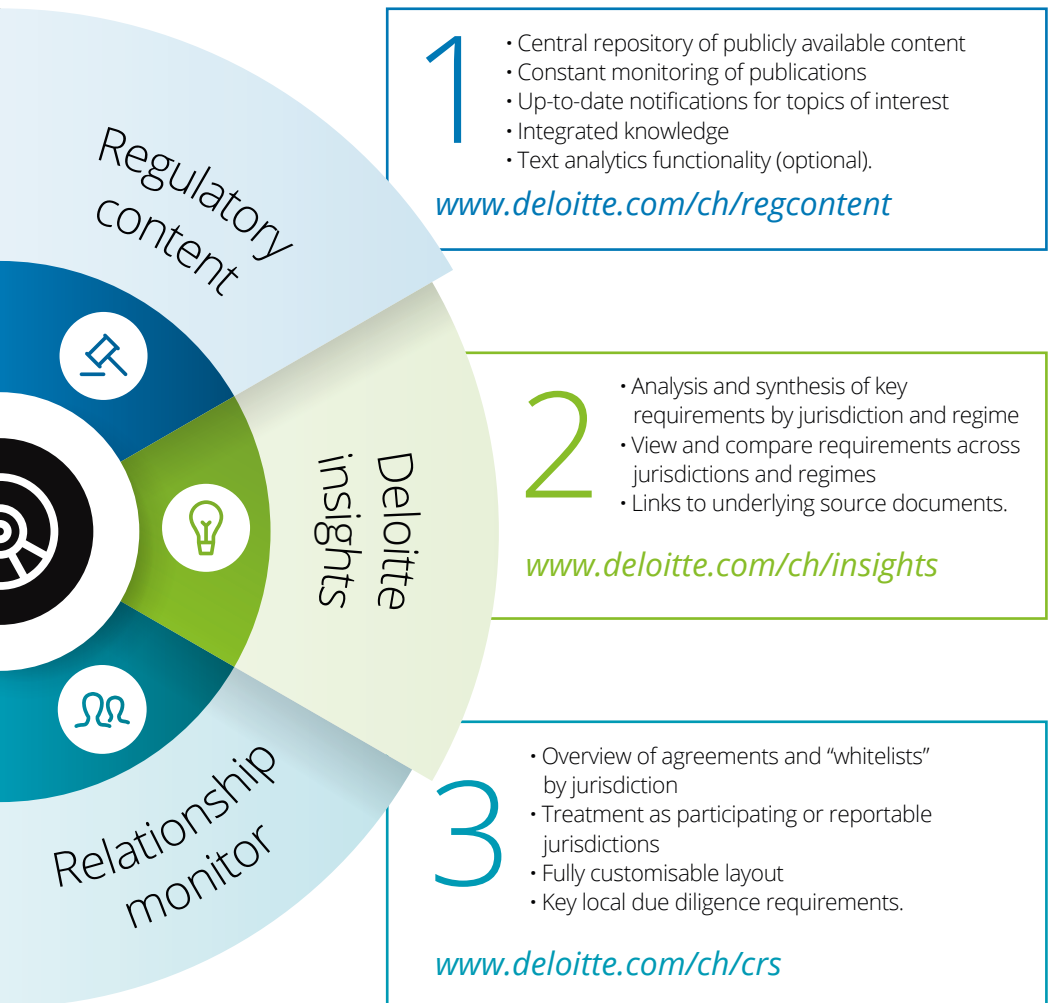
*"A unique software based solution targeted at global financial institutions to enable the project team, operational stakeholders, subject matter experts, and Responsible Officer to more efficiently facilitate their global FATCA, CRS, or QI compliance."*

## Taxparency

- Central knowledge management for tax regulatory topics within an organisation
- Custom built web crawling technology
- Regimes in-scope: US FATCA, CRS, and QI
- Identify implementation differences between and across jurisdictions and regimes
- Browse and search through regulatory content and Deloitte insights
- Save and share searches with colleagues
- Overview of CRS agreements and relevant lists published by local authorities
- Little to no IT/implementation costs.





[www.deloitte.com/ch/taxparency](http://www.deloitte.com/ch/taxparency)





# Subscription model

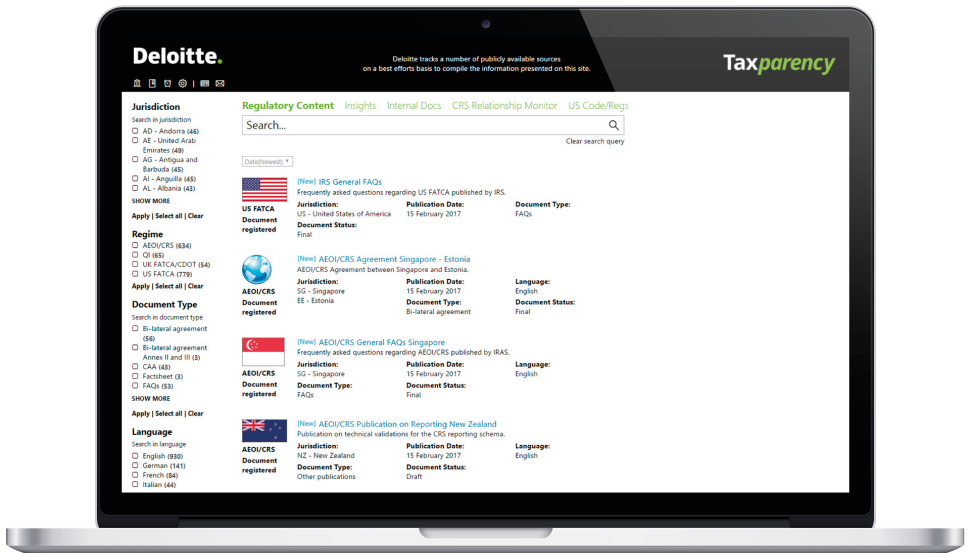
## À la carte

	 Regulatory content	 Text analytics	 Deloitte insights	 Relationship monitor
<b>Regulatory content</b>				
Constant monitoring of publications	✓			
Up-to-date notifications for topics of interest	✓			
Full research and reference capabilities	✓			
Language support, definitions, terms and dictionaries		✓		
<b>Deloitte insights</b>				
Analysis and synthesis of key requirements by jurisdiction and regime			✓	
View and compare requirements across jurisdictions and regimes			✓	
Links to underlying source documents			✓	
<b>CRS relationship monitor</b>				
Overview of agreements by jurisdiction				✓
Operational consequences, including local due diligence requirements				✓
Network visualisation				✓



# Regulatory content

## Constant monitoring of publications

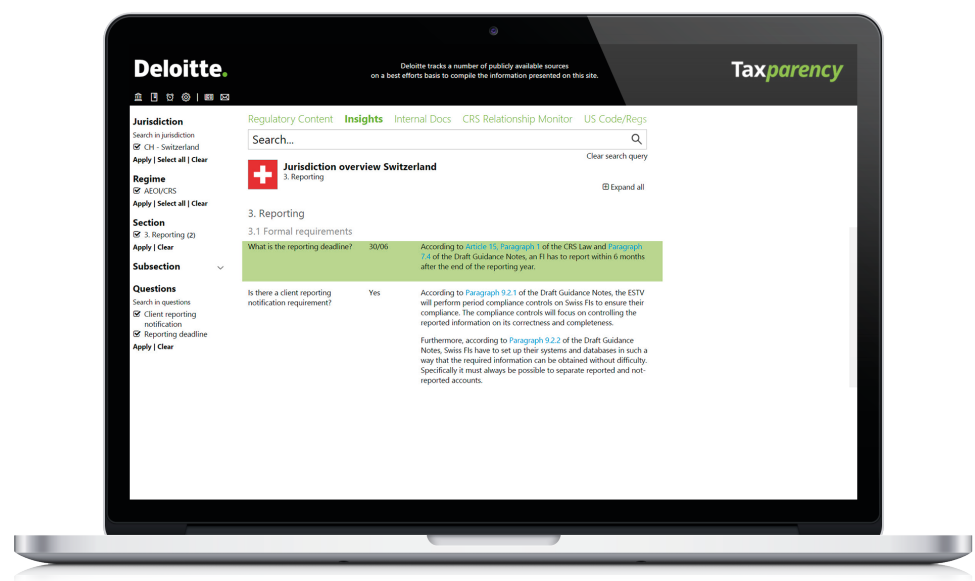


"Taxparency alerts are customised to my needs! I don't need to filter out all the 'noise' as I need to do with standard newsletters I receive from other providers."

**Client, global bank**

# Deloitte insights

## Analysis and synthesis of key requirements by jurisdiction and regime

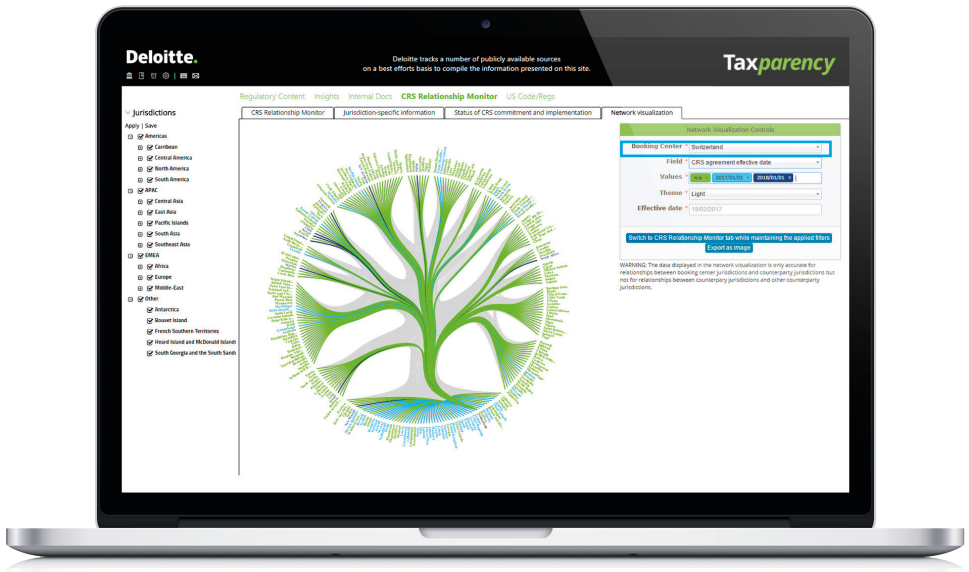


"Sometimes I just need to quickly find the reporting deadline in each of our relevant booking centers."

**Program manager, global bank**

# CRS relationship monitor

## Network visualisation



"Does jurisdiction A have an agreement with jurisdiction B?  
Is jurisdiction A considered a Participating and/or  
Reportable jurisdiction from jurisdiction B's perspective?  
When is the onset of CRS in jurisdiction C and by when is  
it required to identify pre-existing clients? Is it required to  
collect a TIN and, if yes, in what format?"

**Client program manager, international private bank**

# Client benefits



## Risk mitigation

Deloitte's worldwide resources to identify, and analyse the relevant primary and secondary sources of information.

Central source of information to ensure that interpretations and internal positions will be applied consistently across locations.



## Collaboration

Customised alert function for new documents or changes to existing ones.

Ability to tag and comment on documents and share with colleagues.

Definition of own searches or use of saved searches defined by expert users.



## Knowledge management

Institutionalisation of knowledge with internal resources.

Automatic connections amongst different searches.

Fuzzy matching to improve user search experience.



## Operationalisation

Extended reports and dashboards providing summary overview of key requirements.

Multi-lingual key term glossary enabling searches of documents in different languages.

# Key contacts



**Markus Weber**

**FSI Tax Leader, Switzerland & Liechtenstein**

markweber@deloitte.ch

+41 58 279 7527



**Brandi Caruso**

**Tax Transparency Leader**

bcaruso@deloitte.ch

+41 58 279 6397



**Michael Grebe**

**Senior Manager**

mgrebe@deloitte.ch

+41 58 279 6248



**Karim Schubiger**

**Tax Transparency Leader, Romandie**

kschubiger@deloitte.ch

+41 58 279 9202



**Kaitlin Barbier**

**Client Project Coordinator**

kbarbier@deloitte.ch

+41 58 279 7648

## Notes





Deloitte refers to one or more of Deloitte Touche Tohmatsu Limited (“DTTL”), a UK private company limited by guarantee, and its network of member firms, each of which is a legally separate and independent entity. Please see [www.deloitte.co.uk/about](http://www.deloitte.co.uk/about) for a detailed description of the legal structure of DTTL and its member firms.

Deloitte LLP is the United Kingdom member firm of DTTL.

This publication has been written in general terms and therefore cannot be relied on to cover specific situations; application of the principles set out will depend upon the particular circumstances involved and we recommend that you obtain professional advice before acting or refraining from acting on any of the contents of this publication. Deloitte LLP would be pleased to advise readers on how to apply the principles set out in this publication to their specific circumstances. Deloitte LLP accepts no duty of care or liability for any loss occasioned to any person acting or refraining from action as a result of any material in this publication.

© 2017 Deloitte LLP. All rights reserved.

Deloitte LLP is a limited liability partnership registered in England and Wales with registered number OC303675 and its registered office at 2 New Street Square, London EC4A 3BZ, United Kingdom. Tel: +44 (0) 20 7936 3000  
Fax: +44 (0) 20 7583 1198.

Designed and produced by The Creative Studio at Deloitte, London. J11230