

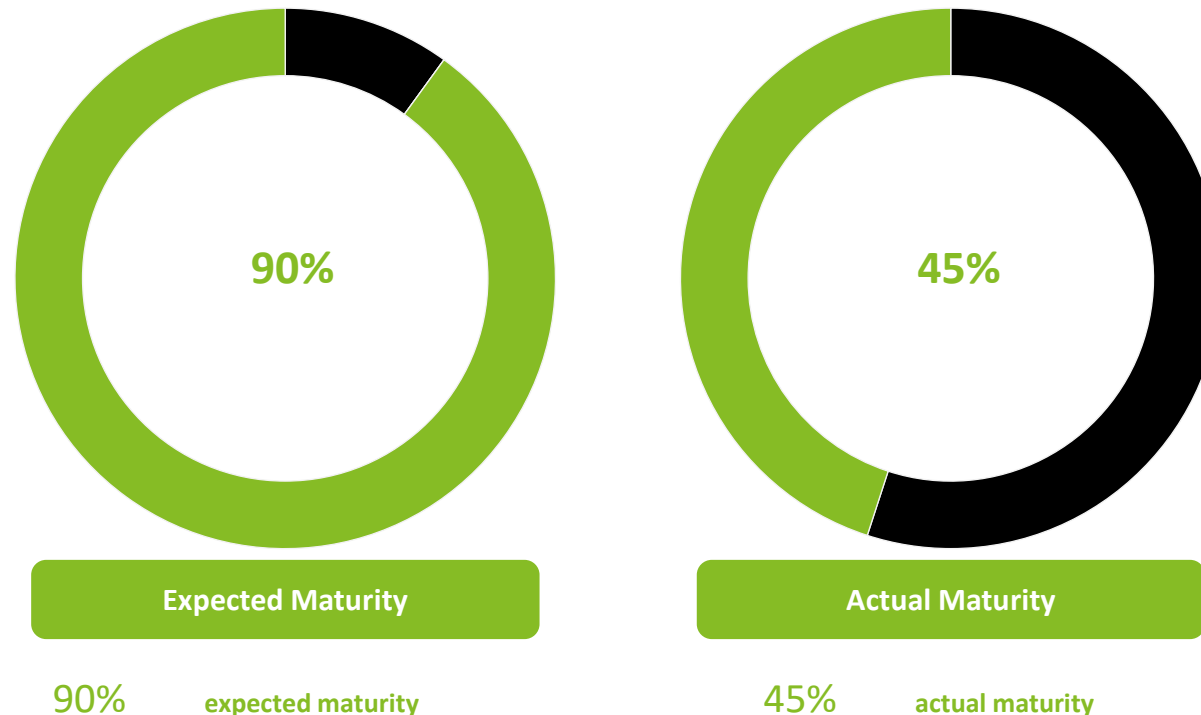


Mainframe Security & Risk Management

Confidence in security maturity compared to actual maturity



Based on assessments we previously performed, we observe an **important difference** between the confidence customers have in their Mainframe security compared to the maturity we assess.



We compared the result of the self assessment made by our customers on our set of security controls (around 40 controls) and the result of our independent assessment. Assessments made on 15 key financial players in Europe.

Mainframe Security Assessment – summary



The Mainframe provides with a complete IT Stack from hardware to the applications to process transactions. These however introduce new challenges as such platforms, centralizing large amounts of control over the infrastructure, introduce new risks from both **security** and **governance** point of view.

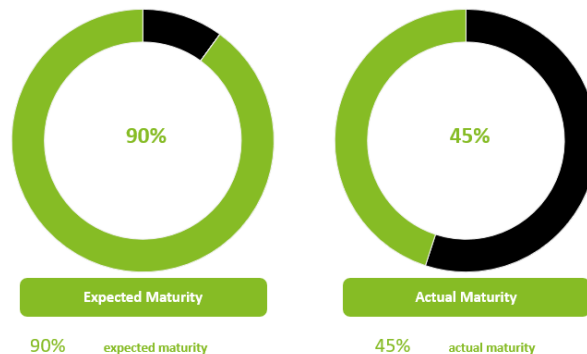
Mainframe in the IT infrastructure

- The Mainframe is a box created and maintained by IBM. All components are created by IBM and are different from other mainstream components. The box contains all components (network, processor, memory).
- The main use of the Mainframe is to process a **huge number of transactions** per second. This architecture add an extra layer (transaction layer). **Key financial processes** of main **financial institutions** and **key customers** are relying on a Mainframe.

Confidence in security maturity compared to actual maturity



Based on assessments we previously performed, we observe an **important difference** between the confidence customers have in their Mainframe security compared to the maturity we assess.



Our Approach and Strengths

- Based on our expertise with out of the shell technologies and deep understanding of the Mainframe infrastructure, we help our clients with a technical Mainframe assessment and identification of weaknesses and related risk exposure.
- Our Centre of Excellence **developed a set of automated tools** based on already available reports and commands, increasing the scope coverage and the delivery efficiency and effectiveness.
- The tools could also be used on a recurrent basis by customers to ensure compliance over a period (**Mainframe Security as a service**).
- Thanks to the set of tools and the number of security assessment already performed, we developed a **security benchmark**, helping companies to compare their **maturity versus other players** in their sectors.
- The benchmark also includes solutions deployed by other organisations in order to **remediate identified weaknesses** and helping them to **strengthen their security**.

Our Approach and Strengths



How we can work together

- Based on our expertise with out of the shell technologies and deep understanding of the Mainframe infrastructure, we help our clients with a technical Mainframe assessment and identification of weaknesses and related risk exposure.
- Besides we help our clients in developing their IT roadmap, challenging the use of Mainframe and defining how the Mainframe could still be the core of their infrastructure in the new cloud era.

Centre of Excellence



- Deloitte Belgium has developed a centre of Excellence on Mainframe with dedicated seasoned experts on Security and integration.
- The team supported core financial institutions in their security compliance and their journey to cloud.
- The team has worked successfully cross border with United Kingdom, France, Luxemburg, Germany, Spain, Denmark and Greece.

Automated tools



- Our Centre of Excellence developed a set of automated tools based on already available reports and commands, increasing the scope coverage and the delivery efficiency and effectiveness.
- The tools could also be used on a recurrent basis by customers to ensure compliance over a period (Mainframe as a service).

Benchmark - Maturity



- Thanks to the set of tools and the number of security assessment already performed, we developed a security benchmark, helping companies to compare their maturity versus other players in their sectors.
- The benchmark also includes solutions deployed by other organisations in order to remediate identified weaknesses and helping them to strength their security.

Contacts



Bert Truymman
Partner
Deloitte Risk Advisory
btruymman@deloitte.com



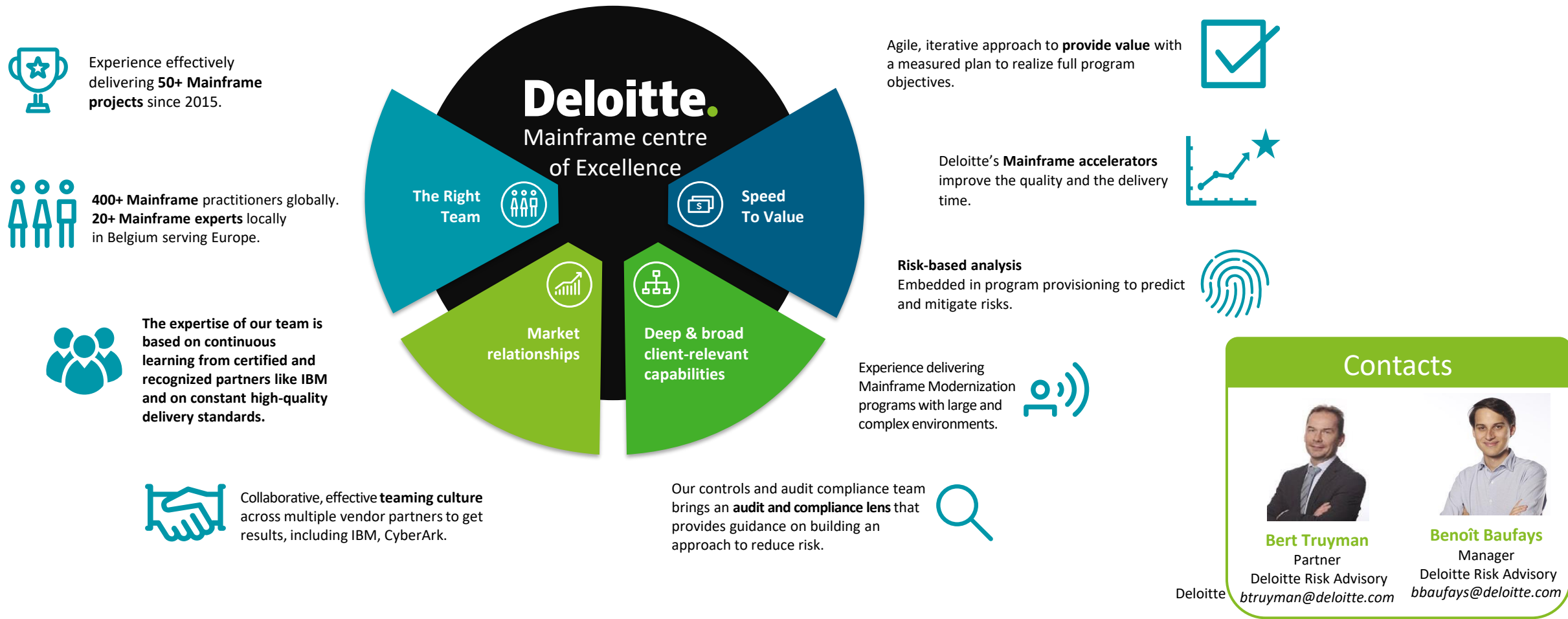
Benoît Baufays
Manager
Deloitte Risk Advisory
bbaufays@deloitte.com

BE MF Centre of Excellence EMEA

Deloitte Belgium as European centre of excellence

In today’s world, where specialization is key to bring added value, Deloitte Belgium has been chosen to be the European Center of Excellence for Mainframe related technologies.

Providing services to others European Deloitte’s branches, our team had the opportunity to work all around Europe in different Industries going from Financial Sector to Manufacturing of Steel.





Deloitte refers to one or more of Deloitte Touche Tohmatsu Limited ("DTTL"), its global network of member firms and their related entities. DTTL (also referred to as "Deloitte Global") and each of its member firms are legally separate and independent entities. DTTL does not provide services to clients. Please see www.deloitte.com/about to learn more.

Deloitte is a leading global provider of audit and assurance, consulting, financial advisory, risk advisory, tax and related services. Our network of member firms in more than 150 countries and territories serves four out of five Fortune Global 500® companies. Learn how Deloitte's approximately 286,000 people make an impact that matters at www.deloitte.com.

This communication contains general information only, and none of Deloitte Touche Tohmatsu Limited, its member firms or their related entities (collectively, the "Deloitte network") is, by means of this communication, rendering professional advice or services. Before making any decision or taking any action that may affect your finances or your business, you should consult a qualified professional adviser. No entity in the Deloitte network shall be responsible for any loss whatsoever sustained by any person who relies on this communication.

© 2024. For information, contact Deloitte Touche Tohmatsu Limited.