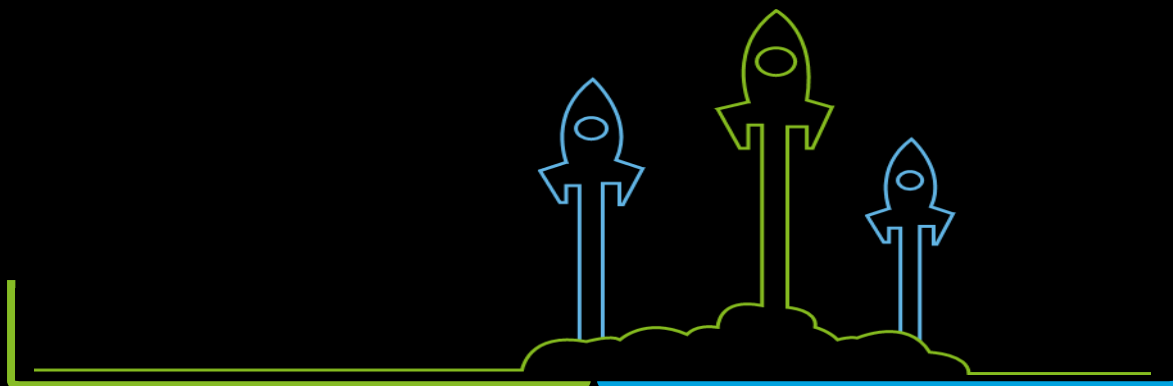


**The VAT e-commerce package**  
A new reality for **parcel operators** as of July 2021



How to navigate in this new environment ?

Deloitte can assist your business to **prepare** by actively managing VAT and customs, and seizing opportunities





## What is the new VAT E-commerce package?

As from 1 July 2021, all **B2C supplies** of goods to customers in the EU should in principle be **taxed at destination**. EU legislation aims to achieve this through different rules and simplification schemes.

For goods coming from *outside* the EU, the current import VAT exemption for low value parcels ( $\leq$  €22) will be abolished, which means that all parcels should be customs cleared upon importation with a view of collecting import VAT. For consignments with an intrinsic value of <150 EUR, logistics service providers can apply a special arrangement to pay the import VAT due. Next to that, sellers or marketplaces can use a new “Import One Stop Shop” scheme for such goods, allowing a VAT exemption at the importation point.

To balance the increase in customs formalities, a super reduced electronic data-set will be introduced for customs purposes.

### Impact on fast parcel operators?

These new rules will have a significant impact on parcel operators, and - If not duly prepared - a number of potential issues could arise during the shipping and/or importation process.

It is critical for fast parcel operators to be able to continue to deliver parcels into the EU without delay and as efficiently as possible. This will require them to provide appropriate information and support to sellers and customers, to help them navigate the new environment.

### Taking action

**Parcel operators** should assess the impact of the VAT e-commerce package on their operations in terms of:

- New data requirements from a customs clearance perspective
- Increased data exchanges with sellers and digital platforms and marketplaces
- Offering ready-to-go solutions for sellers and customers
- Manage relationships with sellers, customers and marketplaces
- ...

### How can we help?

The Deloitte “**e-commerce parcel operator package**” consists in an accessible **entry-level workshop** facilitated by a team of Deloitte VAT & Customs consultants, **aimed at all business functions of parcel operators**. The workshops are for companies that would like to understand how the new rules will impact their day-to-day business and processes, and their customer value proposition.

The workshop will allow for a smooth transition into the new rules, and support parcel operators so they can continue to **deliver parcels into the EU as efficiently as possible, without delay**.



## Roadmap to prepare your business

**Implementation (go live)**  
*Deloitte can further assist post go-live (e.g. develop offerings, seller compliance)*

**Prepare**  
*Communicate changes and offerings inside and outside the organization. Onboard customers in the new environment.*

**Design and build**  
*Capture requirements and concretize opportunities*

**Assessment phase:**  
*Entry-level workshop*



**Interested in an entry-level workshop?**

**Contact us at:**

[BE2021ECOMMERCE@DELOITTE.COM](mailto:BE2021ECOMMERCE@DELOITTE.COM)

## Entry-level workshop

A half-day (3-hour) on-site or remote conference workshop facilitated by Deloitte Indirect Tax consultants, which includes:

- ✓ A practical update on the 2021 e-commerce VAT package
- ✓ How these new rules will impact the day-to-day practice of parcel operators
- ✓ A detailed mapping of the most important flows, with a strong focus on parcel operators
- ✓ Challenges and opportunities for parcel operators embedded in these new rules
- ✓ Defining the precise impact for your business, and how to prepare for July 2021
- ✓ Consolidating the outcome of the analysis in an action plan to ensure a smooth transition into the new rules.

**EUR 2,500 (excl. expenses and VAT)**





## Connect with us



**Pieter Van Hoecke**  
Partner  
Indirect Tax  
[pivanhoecke@deloitte.com](mailto:pivanhoecke@deloitte.com)  
+ 32 3 800 86 74



**Bram Fouache**  
Director  
Indirect Tax  
[bfouache@deloitte.com](mailto:bfouache@deloitte.com)  
+ 32 3 800 86 13



**Jorren Wiame**  
Manager  
Indirect Tax  
[jwiame@deloitte.com](mailto:jwiame@deloitte.com)  
+ 32 3 242 42 41



**Bertrand Van Maele**  
Manager  
Global Trade Advisory  
[bvanmaele@deloitte.com](mailto:bvanmaele@deloitte.com)  
+32 2 600 65 98

# Deloitte.

Deloitte refers to one or more of Deloitte Touche Tohmatsu Limited (“DTTL”), its global network of member firms, and their related entities. DTTL (also referred to as “Deloitte Global”) and each of its member firms are legally separate and independent entities. DTTL does not provide services to clients. Please see [www.deloitte.com/about](http://www.deloitte.com/about) to learn more.

Deloitte is a leading global provider of audit and assurance, consulting, financial advisory, risk advisory, tax and related services. Our network of member firms in more than 150 countries and territories serves four out of five Fortune Global 500<sup>®</sup> companies. Learn how Deloitte’s approximately 286,000 people make an impact that matters at [www.deloitte.com](http://www.deloitte.com).

This communication contains general information only, and none of Deloitte Touche Tohmatsu Limited, its member firms or their related entities (collectively, the “Deloitte network”) is, by means of this communication, rendering professional advice or services. Before making any decision or taking any action that may affect your finances or your business, you should consult a qualified professional adviser. No entity in the Deloitte network shall be responsible for any loss whatsoever sustained by any person who relies on this communication.

© 2021 Deloitte

Designed and produced by the Creative Studio at Deloitte, Belgium.

# Deloitte. Legal

As a top legal practice in Belgium, Deloitte Legal - Lawyers is a full service business law firm, highly recommended by the most authoritative legal guides. Deloitte Legal - Lawyers is based in Zaventem, Watermael-Boitsfort, Antwerp, Ghent and Kortrijk. It consists of close to 150 highly qualified Bar-admitted lawyers. Deloitte Legal - Lawyers offers expert advice in the fields of banking & finance, commercial, corporate/M&A, employment, IT/IP, public/administrative, insolvency and reorganisations, real estate, EU law, tax law, tax & legal services for high-net-worth families & individuals (Greenille Private Client) and dispute resolution. Whenever required to ensure a seamless and comprehensive high-quality service, Deloitte Legal - Lawyers collaborates closely with other professions (e.g. tax, financial advisory, accountancy, consulting), and with a select group of law firms all over the world.

Deloitte Legal - Lawyers provides thorough and practical solutions tailored to the needs of clients ranging from multinational companies, national large and medium-sized enterprises, financial institutions, government bodies to private clients. Deloitte Legal - Lawyers is part of a privileged multidisciplinary cost-sharing association with Deloitte Belastingconsulenten CVBA.

Deloitte Legal - Lawyers © 2021.