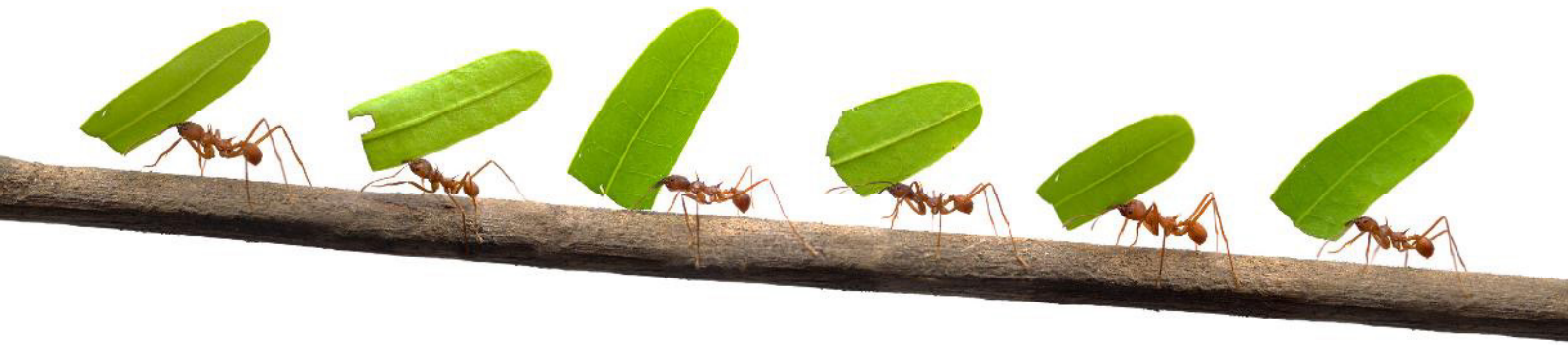
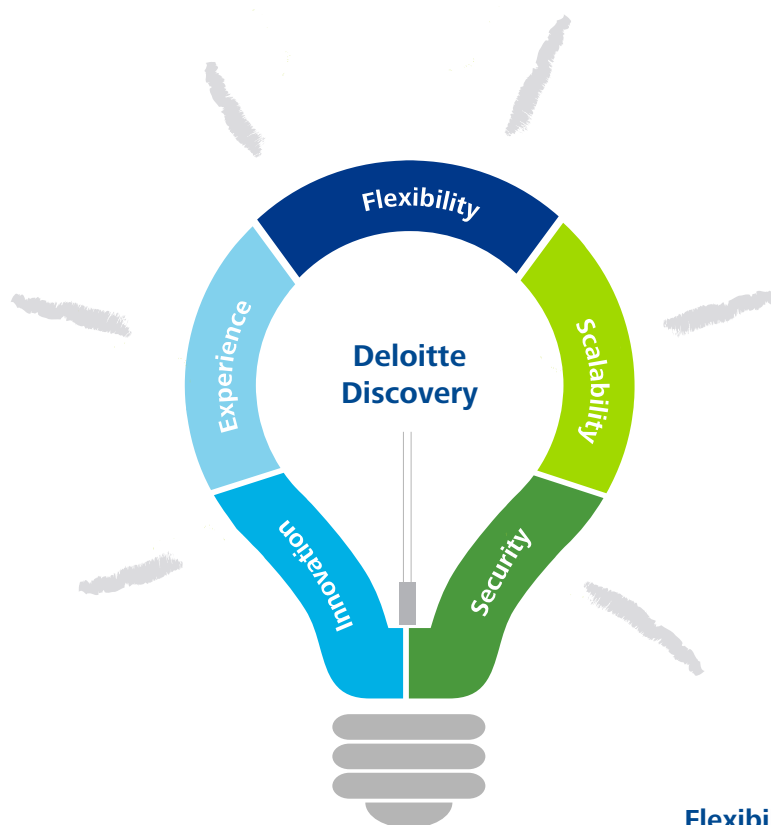


Deloitte Discovery
The right team for your
organization



Why Deloitte Discovery

Overview



Experience

- We have developed & deployed workflows powered by analytics with demonstrated cost reductions
- We bring leading practices and accelerators derived from extensive experience
- We have process controls over all events and activities
- We stand behind all of our work

Innovation

- We implement fresh ideas and leading practices in order to meet the changing needs of the discovery process
- We innovate through the application of evolving technologies and predictive analytics to improve workflow management
- We have invested and continue to invest in leading tools and technology

Flexibility

- We can deliver end-to-end services with established methodologies that can be adapted to your needs

Scalability

- Our team members bring extensive qualifications and eDiscovery experience in managing large and small scale projects
- We have a team of over 800 global discovery professionals, including about 500 in the U.S.

Security

- We promote a culture where data and information security are a priority in our services
- We own and operate a highly-secure, scalable infrastructure built to Tier III and IV specifications

Why Choose Deloitte?



Experience

on small to large matters with many unique requirement sets



Innovation

in our work – we are constantly evaluating and integrating market leading technology solutions



Accelerators

and leading practices derived from extensive experience within a variety of industries



Infrastructure

that is highly secure and scalable



Local focus and global reach

with a team of more than 800 discovery professionals worldwide



A culture

where data and information security are a priority



Recognition

and a reputation among industry groups and peers

We have demonstrated that we are ready to bring:

Deloitte Discovery is dedicated to working with you to deliver significant value. Let's continue the journey together.

“

“Deloitte is laser focused on being a leading eDiscovery services provider and partnering with leading technologies and then extending those technologies via services. This should give Deloitte an advantage over service providers that are also trying to develop and sell proprietary software.”

- eDJ Group

”

About Deloitte Discovery

Core Services

Deloitte Discovery professionals deliver solutions to complex electronic discovery challenges our clients face using our state of the art facilities and technology. We collaborate with our clients to assist with the preservation, collection, processing, hosting, review and production of data subject to discovery.

Readiness

Reducing the risks and managing the costs of discovery through careful preparation and process improvement.

- Establish internal discovery programs and oversight capabilities
- Assess and vet available technology
- Provide oversight and budget reporting
- Create discovery roadmaps that help counsel identify data locations and adhere to consistent processes

Hosting

Providing clients and legal counsel with a secure online collaborative environment for legal review.

- Secure, web-based access via Citrix or two-factor RSA authentication
- Multilingual search and display
- Concept-based search and clustering
- Tiff-on-the-fly capability
- Full redaction, highlighting, and annotation
- Extensive reporting
- 24x7x365 support (800 number and email)

Collection / Intake

Effectively identifying and collecting data and documents to meet discovery demands.

- Forensically sound collection methodologies
- Covert collection capability
- Network based physical and logical collections
- Global reach with over 225 computer forensic specialists
- Early case assessment assistance

Review

Efficiently managing document review in business disputes and investigations through refined methodologies and advanced analytics.

- Litigation privilege and relevancy review
- Second request review
- Protected information review (e.g., trade secrets, confidentiality, privacy)
- Issue, subject, and hot document coding
- Predictive coding assistance
- Managed reviews

Processing

Securely and efficiently reducing collected data to a manageable set for review.

- Multilingual capability with support for over 100 languages and 1,000 content formats
- Advanced search capability with concept-based clustering and visualization of data; advanced analytics (social networking, message tracing, time-line analysis)
- Foreign language translation and OCR
- High-availability, fault tolerant architecture

Production

Accurate, on-time production of data in multiple formats.

- Native, Tiff, or mixed mode productions
- Bates numbering and endorsements
- Full support for redactions and highlights

Processing and Hosting Analytics

Textual Near-Duplicate Identification.

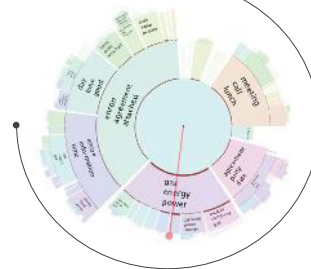
- Identifies records that are textual near-duplicates (those in which most of the text appears in other records in the group and in the same order)
- Returns a percentage value indicating the level of similarity between documents



Document ID	Text	Similarity Percentage
1000000001	100 100 00000001 0	100%
1000000002	100 100 00000001 0	100%
1000000003	100 100 00000001 0	100%

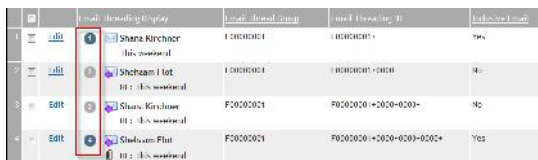
Clustering and Focus Maps

- Clustering utilizes an analytics engine to create groups of conceptually similar documents
- Enables you to identify conceptual groups in a workspace or subset of documents using an existing index
- Useful when working with unfamiliar data sets and can also return the closest terms sometimes called Keyword Expansion
- A Focus Map is a cluster built from a subset of the entire document population



Email Threading

- Determines the relationship between email messages by grouping related email items together
- Identifies inclusive emails, which contain the most complete prior message content and allow you to bypass redundant content
- Applies email visualization, including reply, forward, reply all, and file type icons
- Helps you track the progression of an email chain, allowing you to easily identify the beginning and end of an email chain



Email ID	Email Thread ID	Email Thread Name
1000000001	1000000001	1000000001
1000000002	1000000001	1000000001
1000000003	1000000001	1000000001
1000000004	1000000001	1000000001
1000000005	1000000001	1000000001

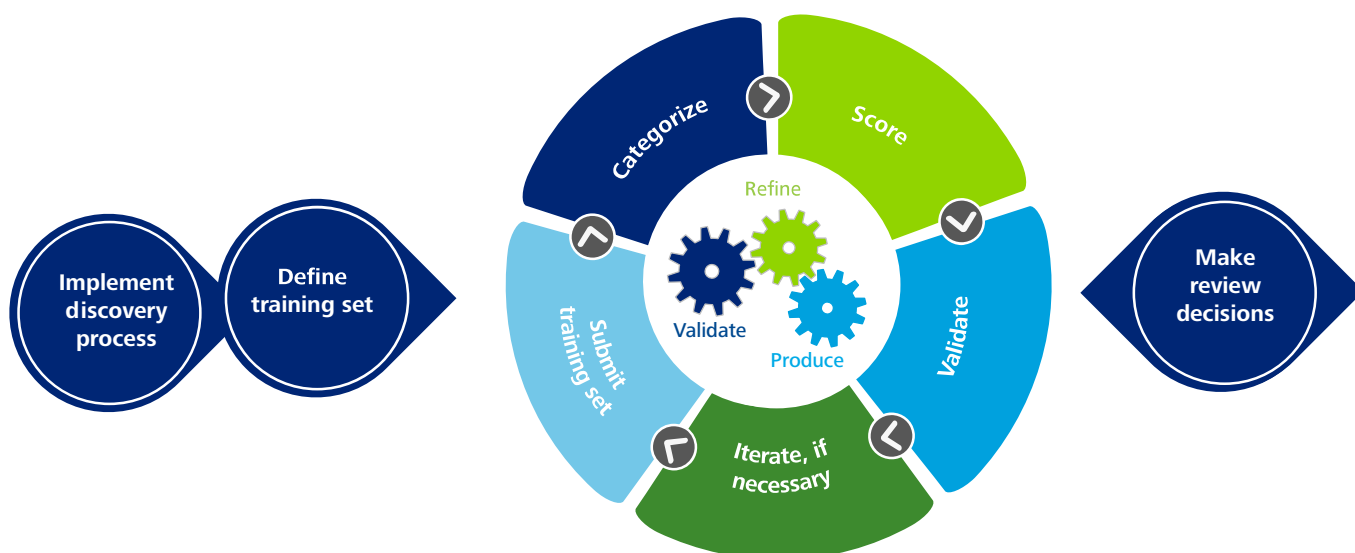
Language Identification

- Identifies the primary and secondary languages (if any) present in each record
- Provides the percentage of the message text that appears in each detected language

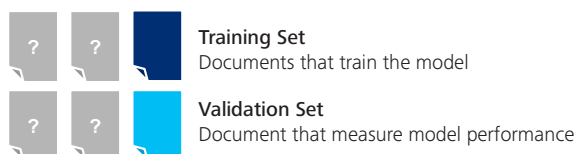


Document ID	Primary Language	Secondary Language	Percentage
1000000001	English	English	100%
1000000002	English	English	100%
1000000003	English	English	100%
1000000004	English	English	100%
1000000005	English	English	100%

Review Workflow with Analytics



Review population



Scoring Set
Documents that have the model applied

Review progresses more efficiently

How you can use it

Prioritize Documents for Review: Text categorization can be used to “smart batch” documents based on their likelihood of responsiveness, helping to get documents most likely to be responsive into the review and production work streams first.

Segment the Review: By grouping similar scored documents into review segments, appropriate resources can perform the review to assist in increasing reviewer accuracy and reducing the cost of the review. One example is as follows:

- Documents most likely to be responsive – experienced domestic reviewers
- Documents most likely to be not responsive – experienced offshore reviewers

Streamline Quality Control: Text categorization scores can be compared to reviewer coding to create a more efficient and targeted quality control process.

Exclude Documents Faster: Text categorization scores can be used to quickly identify documents that are very likely to be non-relevant and, if project requirements permit, help guide you to exclude documents from review based on statistical accuracy.

Deloitte Workflow Accelerators

D³

Deloitte's D3 tool manages tracking and billing information provided throughout the eDiscovery process. The tool captures metrics at each step and records the information in the workflow in billing system.

In addition, D3 is utilized to seamlessly transfer data and information between various applications such as our processing and hosting platforms.

Dynamic Review

Deloitte's Dynamic Review is a managed document review solution that employs a layered approach of filtering, analytics, text categorization ("predictive coding") and validation to inform decision-making.

This process allow us to identify high value records by scoring documents and it facilitates review by ordering documents in conceptually similar order.

EDSC USI

EDSC USI (United States / India) allows our U.S. discovery group to operate around the clock at full capacity.

By leveraging our USI office we are also able to increase efficiencies and reduce operating costs.

Intake Foundation System (IFS)

Deloitte's proprietary Intake Foundation System (IFS) provides full visibility of data provided to the EDSC.

IFS allows stakeholders to make ECA determinations to both identify records to process (or not process) and to associate various populations to individual custodians on an individual file level.

DEParT

Depart is a Deloitte developed parser that converts Mobile Device data into a consistent format for use within eDiscovery platforms.

Depart allows us to load mobile device data in a similar fashion to loading ESI, and it enables our professionals to perform review in an hosting platform.

Assisted Redaction

Deloitte Assisted Redaction is an intuitive application that automates the identification and protection of sensitive information to automatically redact user defined terms.

Redactions are a critical and time consuming task during document review. Deloitte Assisted Redaction provides document reviewers with the ability to find and redact terms including PII such as social security numbers and birthdates.

Assisted Translation

Deloitte Assisted Translation is an intuitive application that enables on-the-fly non-English language translations.

Assisted Translation is a proprietary Relativity add-on to perform on-the-fly machine translations to increase the determination of relevancy during document review and to reduce costs by limiting non-English records that require formal review.

Deloitte Reporting System

Deloitte Reporting System manages the custom reports we provide throughout the discovery process.

The system accumulates metrics from the technology platforms in use, and generates reports that can be subscribed to or that can be distributed to stakeholders automatically.

Reporting Samples

Evidence Received Report

Description: The Evidence Received Report is a log of the data received at the EDSC. The report provides stakeholders with an inventory of all data provided to the EDSC either in a physical or digital fashion. High level information such as the origins of the data and current location are available in this report as well as the evidence number.

[illegible]

Description: The Evidence Extraction Report reflects the data that is received and extracted (processing batches) at the EDSC. This provides stakeholders with an aggregate or detailed look at the collection source and forensically created processing batch. Extraction details can further be grouped by custodian, file type or media. Additionally, the report provides insight into the processing batches that have not been processed.

[illegible]

Suggested Frequency: Daily (until processing and filtering is complete)

Description: The Waterfall Summary Report provides a snapshot of the data by phase. This report provides the ability to understand where data is during the discovery process. The report provides this by summarizing the volume of data (document count and size) by custodian, collection source, and processing batch. The waterfall summary allows your team to review the process and confirm procedures are complete and accurate. Additionally, this report can also be used to understand the volume of data progressing through the process for planning purposes.

[illegible]

Description: The Production Summary Report provides a summary of the productions generated on a given project. This report includes key metrics and dates related to production deliveries. The Production Summary allows your team to get up-to-date information on request and delivery dates, bates ranges and metrics such as number of records, pages, images and slip-sheets.

DeLiaute										
Project Name and ID: 2018-01-01-001										
Project Name and ID: 2018-01-01-001										
Product	Product ID	Product Name	Product Category	Product Status	Product Price	Product Stock	Product Weight	Product Length	Product Width	Product Height
Product A	1001	Product A	Category A	Active	10.00	100	1.00	10.00	10.00	10.00
Product B	1002	Product B	Category B	Active	20.00	200	2.00	20.00	20.00	20.00
Product C	1003	Product C	Category C	Active	30.00	300	3.00	30.00	30.00	30.00
Product D	1004	Product D	Category D	Active	40.00	400	4.00	40.00	40.00	40.00
Product E	1005	Product E	Category E	Active	50.00	500	5.00	50.00	50.00	50.00
Product F	1006	Product F	Category F	Active	60.00	600	6.00	60.00	60.00	60.00
Product G	1007	Product G	Category G	Active	70.00	700	7.00	70.00	70.00	70.00
Product H	1008	Product H	Category H	Active	80.00	800	8.00	80.00	80.00	80.00
Product I	1009	Product I	Category I	Active	90.00	900	9.00	90.00	90.00	90.00
Product J	1010	Product J	Category J	Active	100.00	1000	10.00	100.00	100.00	100.00

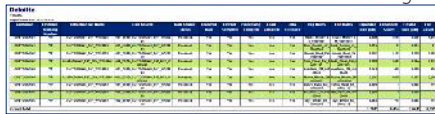
Reporting Samples

Timeline Report

Phase: Processing, and staging

Suggested Frequency: Daily (until processing and filtering is complete)

Description: The Timeline Report provides a historical snapshot as data progresses from one stage to the next. This enables stakeholders to track the status and identify historical data flow trends. With this report, your engagement team will be able to obtain a chronological order of events and be able to better determine time estimates using historical information.



Stage	Count	Start Date	End Date	Duration	Count	Start Date	End Date	Duration
Initial Data	100	2023-01-01	2023-01-01	00:00:00	100	2023-01-01	2023-01-01	00:00:00
Processing	200	2023-01-01	2023-01-01	00:00:00	200	2023-01-01	2023-01-01	00:00:00
Staging	300	2023-01-01	2023-01-01	00:00:00	300	2023-01-01	2023-01-01	00:00:00

Progression Report

Phase: Data intake, processing, and staging

Suggested Frequency: Daily (until processing and filtering is complete)

Description: The Progression Report reflects the data that is received, extracted and hosted at the EDSC. The report can be used to stay current on completeness and accuracy, as well as to understand the volume of data progressing through the process for planning purposes.



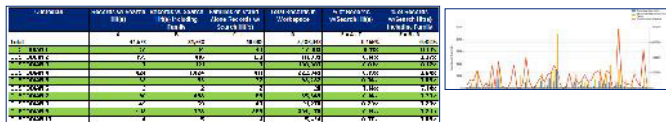
Category	Count	Start Date	End Date	Duration	Count	Start Date	End Date	Duration
Data Intake	100	2023-01-01	2023-01-01	00:00:00	100	2023-01-01	2023-01-01	00:00:00
Processing	200	2023-01-01	2023-01-01	00:00:00	200	2023-01-01	2023-01-01	00:00:00
Staging	300	2023-01-01	2023-01-01	00:00:00	300	2023-01-01	2023-01-01	00:00:00

Relativity Search Term

Phase: Early case assessment, and document review

Suggested Frequency: Post search

Description: The Relativity Search Term Report provides metrics and graphics representing the search term results. The Search Term Report results are over-responsive terms and/or incorrect search strings.

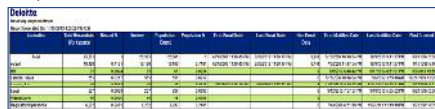


Relativity Snapshot

Phase: Early case assessment, and document review

Suggested Frequency: Upon request, typically when insight on a specific population is needed

Description: The Relativity Snapshot Report provides a number of views or groupings of any document population inside Relativity. This includes custodian, file type, file extension and date grouping and breakdowns. This report provides engagement teams with a wealth of information to help determine anomalies within datasets or collections, to prioritize datasets, and to inspect file type, date, and domain interactions.



Category	Count	Start Date	End Date	Duration	Count	Start Date	End Date	Duration
Data Intake	100	2023-01-01	2023-01-01	00:00:00	100	2023-01-01	2023-01-01	00:00:00
Processing	200	2023-01-01	2023-01-01	00:00:00	200	2023-01-01	2023-01-01	00:00:00
Staging	300	2023-01-01	2023-01-01	00:00:00	300	2023-01-01	2023-01-01	00:00:00



Additional Deloitte Discovery Services

Mobile Device Discovery

Deloitte Discovery's experienced computer forensics professionals help our clients extract, preserve, and analyze the critical information from mobile devices including smart-phones, tablets, and GPS devices while maintaining/preserving data authenticity. Due to the rapidly changing mobile field, the ability to extract data and the type of data that can be extracted changes based on the device type and model. We use industry standard tools and techniques to preserve the data from these devices. From the resulting image or extraction we can produce a corresponding discovery load file containing the extracted mobile device data including the corresponding meta-data. This enables mobile device data to be loaded and reviewed with traditional data using standard discovery tools.

Cloud Discovery

Deloitte Discovery has extensive experience in forensic analysis, preservation and collection of cloud-based data. The cloud discovery stack is tightly integrated into the state-of-the-art Deloitte Discovery ecosystem, enabling one broad platform where cloud and traditional data converge in a single environment. This enables us to offer consistent processes, evidence handling, tools and quality control for most data sources. Our experience extends from the most frequently used cloud mail and storage platforms to social media and regulatory compliance archives.

Enterprise Contract Management and Review

Deloitte's Enterprise Contract Management and Review services can help companies identify key contracts faster, enabling them to better facilitate the enforcement of their rights, renegotiate contracts and identify areas of lost revenue or stranded costs. Our professionals can also help organizations meet legal and regulatory requirements in a timely manner and help protect them against the risks of non-compliance. We assist by building, reviewing, and managing a contract lifecycle framework that helps sustain and secure your business interests, while bringing efficiency into the process.

Second Request Services

Deloitte Discovery has worked with organizations, law firms, and regulators on some of the largest and most complex Second Requests. We bring the people, technology, resources, and experience to help you keep the deal on track while tackling the formidable challenges posed by Second Request compliance. Our Discovery professionals can promptly identify and collect potentially responsive information from document custodians and from data repositories. We bring to our clients the skills and scalability needed to perform enterprise-level search and targeted collections, and our professionals have experience working with in-house IT teams to collect e-mail, file server data, and structured data, either on-site or remotely. We can also facilitate the simultaneous harvest of data located throughout the U.S. and around the world.

Computer Forensics

Deloitte Discovery's experienced computer forensics professionals help our clients find the critical information that they need by collecting, preserving and harvesting data from mobile devices, computer systems, servers, cloud systems and back-up media, while maintaining / preserving data authenticity and chain of custody. We can also conduct advanced digital forensics analysis on networks, RAM memory, mobile devices and video forensics. We also offer advanced decryption services, advanced file and system recovery, and forensic tape analysis & recovery.

Information Lifecycle and Archive Assessments

Deloitte Discovery professionals help companies address the aspects of information lifecycle solutions, including information lifecycle management, email archiving, defensible disposition and systems involved in your eDiscovery workflow. Our practitioners are trained and experienced on the latest regulatory, eDiscovery and information lifecycle management processes and software applications and how they are deployed in a variety of environments (virtual, cloud, etc.). We make recommendations designed to address the strategy and deployment of processes and technologies used to capture, manage, store, preserve and deliver information (e.g., email, electronic communications, documents, images, records, web content) that are related to business processes and/or regulatory requirements, wherever this information resides.

Discovery Analytics

Deloitte Discovery employs advanced analytics and reporting solutions that help to reduce the risks and costs associated with electronic discovery. We leverage advanced analytics and statistical techniques to both inform attorneys about document populations that require review and to validate the use of cost-saving technologies. Powered by our FAS Analytics Institute, our clients receive the benefits of analytic technology through approachable, easy-to-understand scoring methods, prioritizations and visual analyses. Increasingly, discovery analytics are used to address information governance issues such as defensible disposition and integration challenges between unstructured data and structured data. The combination of statistical, text and database analyses provides a unique insight into relevant data at a lower cost with more accuracy.

Structured Data Support

Deloitte Discovery performs research and analysis that cannot be done with standardized search criteria found on common eDiscovery platforms. We work closely with clients and industry specialists to extract and analyze structured data from disparate systems and link that data to unstructured data. We leverage experience and leading-edge technologies to create rule-sets and predictive models that provide clarity on complex, data-intensive cases. Additionally, we provide our clients with customized reporting through the analysis of text and structured data to provide a more transparent view and ultimately a better understanding of the matter.





Additional Deloitte Discovery Services

Electronic Discovery Project Documentation Coordination and Centralization

Deloitte Discovery's project management professionals assist project teams with coordinating and centralizing key project documents across the entire discovery continuum. Specifically, the team takes a phased approach to identifying, gathering, and organizing process and workflow documents, collection scope and method records, chain of custody documents, interview forms, data summaries, and other work product and deliverables. Our teams provide process implementation at project initiation, as well as mid-stream, to minimize project disruption. By maintaining a current and centralized "playbook" clients can enhance defensibility, scalability, and help mitigate risk.

Cyber Incident Response

Deloitte Discovery helps organizations with cyber incident response in their information environments to protect their important data as well as their reputations and operations. Our Cyber Incident Response practice delivers timely and actionable information as a data breach investigation unfolds so that you can make business and system protection decisions, and understand the adversaries' motives and the data they seek.

Our Cyber Incident Response team addresses core areas that apply to most cyber events:

- Compromise investigation
- Damage assessment
- Remediation



Contact



Philippe Delcourt
Forensic Partner

Direct +32 02 800 22 45

Mobile: +32 496 57 49 79

Email: pdelcourt@deloitte.com

Deloitte refers to one or more of Deloitte Touche Tohmatsu Limited (DTTL), a UK private company limited by guarantee, and its network of member firms, each of which is a legally separate and independent entity. Please see www.deloitte.com/about for a detailed description of the legal structure of Deloitte Touche Tohmatsu Limited and its member firms.

Deloitte provides audit, tax, consulting and financial advisory services to public and private clients spanning multiple industries. With a globally connected network of member firms in more than 150 countries, Deloitte brings world-class capabilities and high-quality service to clients, delivering the insights they need to address their most complex business challenges. Deloitte has in the region of 200 000 professionals, all committed to becoming the standard of excellence.

This communication contains general information only, and none of Deloitte Touche Tohmatsu Limited, its member firms, or their related entities (collectively, the "Deloitte Network") is, by means of this publication, rendering professional advice or services. Before making any decision or taking any action that may affect your finances or your business, you should consult a qualified professional adviser. No entity in the Deloitte Network shall be responsible for any loss whatsoever sustained by any person who relies on this communication.

© 2014 Deloitte & Touche. All rights reserved. Member of Deloitte Touche Tohmatsu Limited