

Deloitte.
Private



AI compliance made easy!

Accountancy & Advisory

First deadline: February 2025

As of February 2025, each company has to ensure its staff have a sufficient level of knowledge regarding AI, considering their expertise, level, role within the company, etc., the so-called 'AI-Literacy' obligation. Whether you're bringing AI to the market or just using it in your day-to-day organisation (yes, I'm looking at you ChatGPT), compliance is essential. **Not sure how to?**
Our AI Starter Package is the perfect low-effort, high impact solution.



Deadline February 2025

- The use of AI systems that pose unacceptable risks is prohibited.
- **AI literacy obligation:** ensure your staff knows what AI is, which tools are allowed, what the risks and biases are, etc.

Fulfilling AI literacy obligation

AI clarity course Pragmatic training for your staff by an AI expert	AI policy Policy explaining what an employee is allowed to do with AI	AI one-pagers Easy to read documents distributed amongst staff	AI onboarding Recording of training to onboard new colleagues
AI LITERACY FOR AI PROVIDERS 3.000 EUR		AI LITERACY FOR AI DEPLOYERS 2.000 EUR	

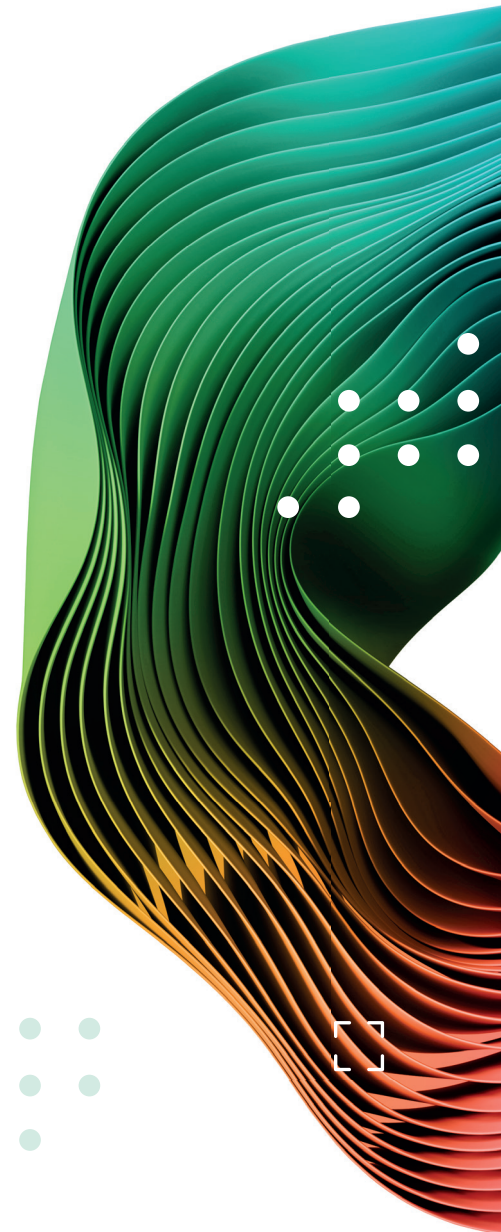
What is included?

- 1 A live training for staff on AI and AI use, tailored to your business needs.
- 2 An acceptable AI use policy to be included in your working regulations.
- 3 Multiple handy one-pagers visually explaining the fundamentals of AI.
- 4 Recording of an AI crash-course for seamless onboarding of new colleagues.

Why choose our AI starter package?

- Ensure compliance and protect your reputation.
- Prevent irresponsible AI usage and safeguard company assets.
- Identify and prevent AI risks early on.

Get in touch and take
that essential step towards
full AI compliancy today!



Need more information?

Don't miss out and reach out to

Matthijs Huysentruyt

Tax & Legal - Office West
Manager Business & Commercial Law
Tel: + 32 494 80 13 16
E-mail: mhuysentruyt@deloitte.com

Dries Rooses

Tax & Legal - Office North-East
Manager Business & Commercial Law
Tel: + 32 470 93 07 95
E-mail: drrooses@deloitte.com

Regional offices in

Antwerp - Brussels - Charleroi - Gent - Hasselt - Kortrijk - Leuven -
Liège - Oostkamp - Zaventem

Headquarters

Gateway Building
Luchthaven Brussel Nationaal 1 J
1930 Zaventem
Tel. 02 800 25 00

www.deloitte.com/be/

Deloitte. Private

Accountancy & Advisory

ACCOUNTING & REPORTING TAX & LEGAL
M&A & FINANCE STRATEGY & PERFORMANCE

Deloitte refers to one or more of Deloitte Touche Tohmatsu Limited (DTTL), its global network of member firms, and their related entities (collectively, the "Deloitte organisation"). DTTL (also referred to as "Deloitte Global") and each of its member firms and related entities are legally separate and independent entities, which cannot obligate or bind each other in respect of third parties. DTTL and each DTTL member firm and related entity is liable only for its own acts and omissions, and not those of each other. DTTL does not provide services to clients. Please see www.deloitte.com/about to learn more..

Deloitte Private is the brand under which firms in the Deloitte network provide services to privately owned entities and high-net- worth individuals.

This communication contains general information only, and none of Deloitte Touche Tohmatsu Limited (DTTL), its global network of member firms or their related entities (collectively, the "Deloitte organisation") is, by means of this communication, rendering professional advice or services. Before making any decision or taking any action that may affect your finances or your business, you should consult a qualified professional adviser. No representations, warranties or undertakings (express or implied) are given as to the accuracy or completeness of the information in this communication, and none of DTTL, its member firms, related entities, employees or agents shall be liable or responsible for any loss or damage whatsoever arising directly or indirectly in connection with any person relying on this communication. DTTL and each of its member firms, and their related entities, are legally separate and independent entities.

