

# South African Department of Communications and Digital Technologies Artificial Intelligence Policy Framework

## Key Points

As Artificial Intelligence gains significant traction globally, both from a technological and regulatory perspective, the Department of Communications and Digital Technologies in South Africa have followed up its Artificial Intelligence Planning discussion document of October 2023, with an Artificial Intelligence Policy Framework released in August 2024. Here is an extract of the key points from the policy framework.

The National Artificial Intelligence (AI) Policy Framework for South Africa is the first step in developing a National AI Policy which aims to promote the integration of AI technologies to drive economic growth, enhance societal well-being, and position South Africa as a leader in AI innovation. The policy framework's primary objective is to strategically foster a robust AI ecosystem through coordinated efforts in research and development, talent cultivation, and infrastructure enhancement.

A cornerstone of the framework is the commitment to ethical AI development and use. It integrates comprehensive guidelines to ensure AI systems are transparent, accountable, and designed to promote fairness while mitigating biases. This includes the establishment of robust data governance frameworks to protect privacy and enhance data security, alongside setting standards for AI transparency and explainability to foster trust among users and stakeholders.

The policy framework emphasizes the importance of human-centred AI, ensuring that AI applications augment human decision-making rather than replace it. By safeguarding professional responsibility and promoting human values, the framework ensures that AI development aligns with societal and ethical considerations. It also includes measures to enhance cybersecurity and protect AI systems from malicious threats.

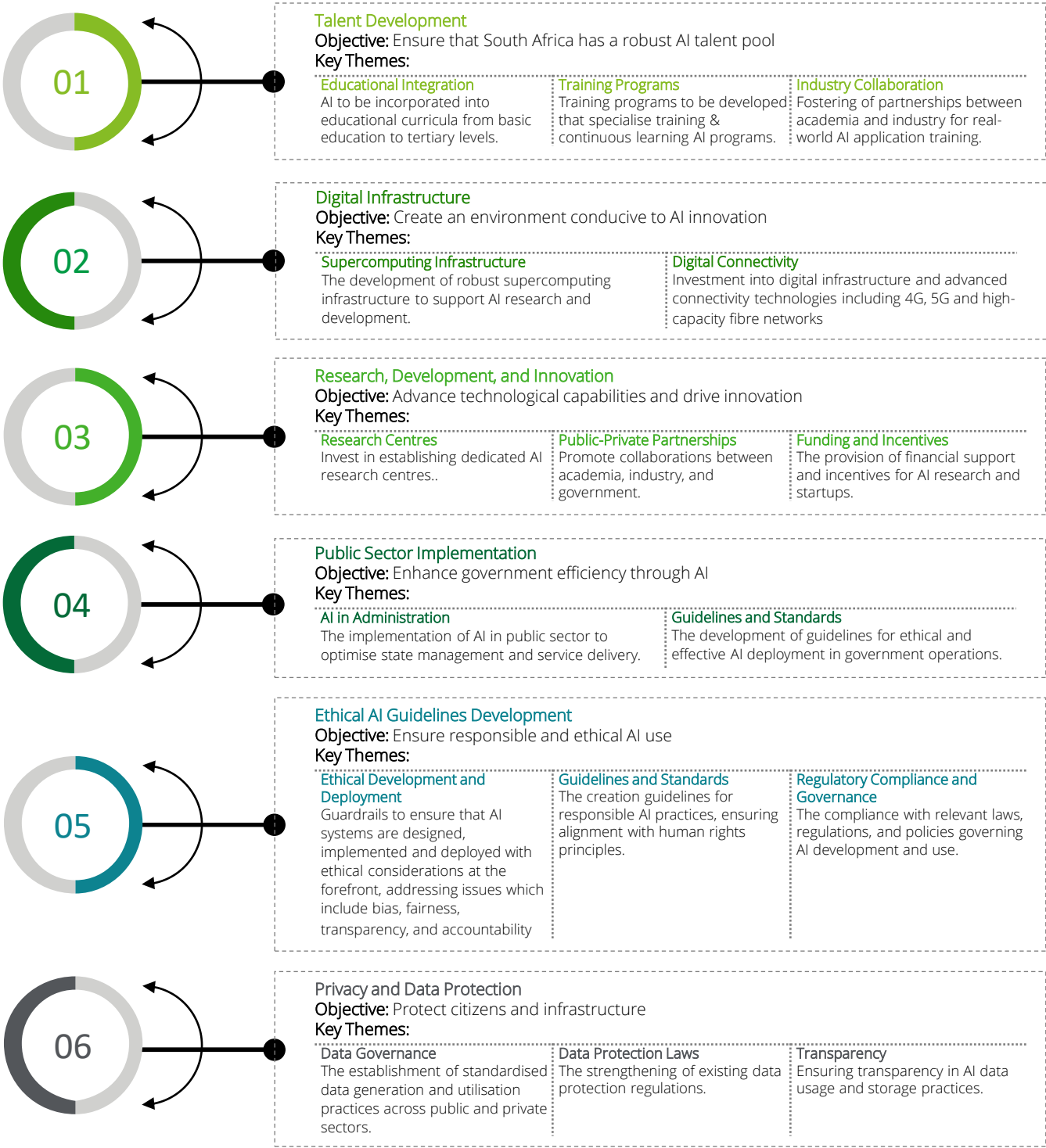
As AI technologies rapidly advance, they offer unprecedented opportunities for economic growth, improved public services, and enhanced quality of life. However, without a coherent and comprehensive policy position, these benefits could be overshadowed by potential risks such as job displacement, privacy concerns, and ethical dilemmas. The National AI Policy will provide clear guidelines and a structured approach to harnessing AI's potential while mitigating its risks, ensuring that AI technologies are developed in a manner that aligns with South Africa's socioeconomic goals and values.

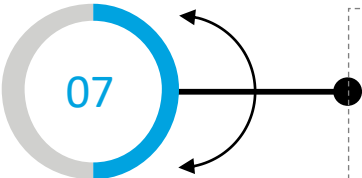
The National AI Policy will serve as the foundational basis for creating AI regulations and potentially an AI Act in South Africa.

Strategic Pillars for the South African AI Policy

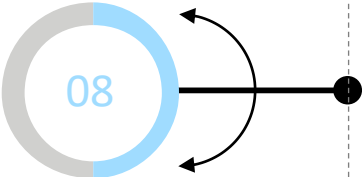
Strategic pillars of this AI Policy are the fundamental components or key areas of focus that will support and drive the implementation of the policy's goals and objectives. They serve as the core framework around which the policy is structured, providing clear guidance and direction for its development. It will also guide the development of robust regulatory mechanisms that ensure AI applications are safe, ethical, and aligned with the public interest.

The strategic pillars are structured first to define the objective of the pillar and then set out some of the key themes and activities that will support the achievement of the objective.





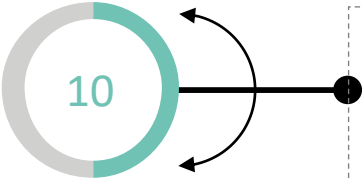
<b>Safety and Security</b> <b>Objective:</b> Protect citizens and infrastructure <b>Key Themes:</b> <b>Cybersecurity Measures</b> The implementation of robust cybersecurity protocols to safeguard AI systems.	
<b>Risk Management</b> The development of frameworks to identify and mitigate risks associated with AI.	



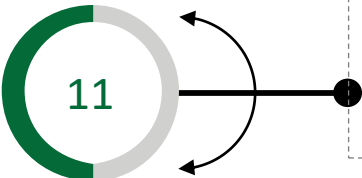
<b>Transparency and Explainability</b> <b>Objective:</b> Build public trust in AI <b>Key Themes:</b> <b>Explainable AI</b> The development of AI systems that provide clear, understandable outputs (The ability to understand and interpret how AI systems arrive at their decisions or conclusions) <b>Accountability</b> Explainability enables developers and organizations to be accountable for the actions and outcomes of AI systems.	
<b>Trust and Acceptance</b> Users and stakeholders are more likely to trust and accept AI systems if they can understand how decisions are made.	
<b>Bias Detection and Mitigation</b> Understanding how AI algorithms make decisions allows for the detection and mitigation of biases. Biases can unintentionally be amplified in AI systems due to skewed training data or inherent biases in algorithms..	
<b>Insight and Improvement</b> Explainable AI provides insights into how models behave in different scenarios, which can lead to improvements in model performance, efficiency, and usability.	<b>Transparency</b> The clear and open operation of AI systems, ensuring that their processes, decision making criteria, and outcomes are understandable and accessible to users and stakeholders including insights into model functionality, data usage, decision logic, and potential impacts..
<b>Public Awareness Campaigns</b> Educate the public on AI technologies and their implications.	



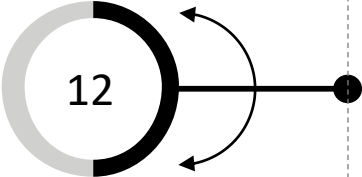
<b>Fairness and Mitigating Bias</b> <b>Objective:</b> Ensure equitable AI deployment <b>Key Themes:</b> <b>Bias Mitigation</b> The development of methods to identify and mitigate biases in AI systems.	
<b>Inclusive Data Sets</b> Ensure AI systems are trained on diverse data sets representing all demographics.	



<b>Human Control of Technology (Human-Centred Approach in AI Systems)</b> <b>Objective:</b> Maintain human oversight over AI <b>Key Themes:</b> <b>Human-in-the-Loop Systems</b> Ensure critical AI decisions involve human oversight (especially in Generative AI).	
<b>Decision-Making Frameworks</b> The development of frameworks for AI decision-making that prioritise human judgment.	



<b>Professional Responsibility</b> <b>Objective:</b> Foster responsible AI development and use <b>Key Themes:</b> <b>Code of Conduct</b> The creation of a code of conduct for AI professionals.	
<b>Ethics Training</b> The integration of ethical training into AI education and professional development.	



<b>Promotion of Cultural and Human Values</b> <b>Objective:</b> Align AI development with societal values <b>Key Themes:</b> <b>Value-Based AI</b> The development of AI systems that promote human well-being, equality, and environmental sustainability.	
<b>Stakeholder Engagement</b> The involvement of diverse stakeholders in the AI policy-making process to ensure alignment with societal values.	

## Contacts



**Samresh Ramjith**  
Risk Advisory Africa | Cyber Risk Leader  
[sramjith@deloitte.co.za](mailto:sramjith@deloitte.co.za)  
+27 11 517 4047



**Leishen Pillay**  
Risk Advisory Africa | Cyber Security Privacy Director  
[lpillay@deloitte.co.za](mailto:lpillay@deloitte.co.za)  
+27 11 209 6418



Deloitte refers to one or more of Deloitte Touche Tohmatsu Limited (DTTL), its global network of member firms, and their related entities (collectively, the “Deloitte organization”). DTTL (also referred to as “Deloitte Global”) and each of its member firms and related entities are legally separate and independent entities, which cannot obligate or bind each other in respect of third parties. DTTL and each DTTL member firm and related entity is liable only for its own acts and omissions, and not those of each other. DTTL does not provide services to clients. Please see [www.deloitte.com/about](http://www.deloitte.com/about) to learn more.

Deloitte provides industry-leading audit and assurance, tax and legal, consulting, financial advisory, and risk advisory services to nearly 90% of the Fortune Global 500® and thousands of private companies. Our professionals deliver measurable and lasting results that help reinforce public trust in capital markets, enable clients to transform and thrive, and lead the way toward a stronger economy, a more equitable society and a sustainable world. Building on its 175-plus year history, Deloitte spans more than 150 countries and territories. Learn how Deloitte’s approximately 570 000 people worldwide make an impact that matters at [www.deloitte.com](http://www.deloitte.com)

This communication contains general information only, and none of Deloitte Touche Tohmatsu Limited (DTTL), its global network of member firms or their related entities (collectively, the “Deloitte organization”) is, by means of this communication, rendering professional advice or services. Before making any decision or taking any action that may affect your finances or your business, you should consult a qualified professional adviser.

No representations, warranties or undertakings (express or implied) are given as to the accuracy or completeness of the information in this communication, and none of DTTL, its member firms, related entities, employees or agents shall be liable or responsible for any loss or damage whatsoever arising directly or indirectly in connection with any person relying on this communication. DTTL and each of its member firms, and their related entities, are legally separate and independent entities.

© 2024. For information, contact Deloitte Touche Tohmatsu Limited.