

Lockdown will be from 23h59 on Thursday, 26 March 2020 to 23h59 on Thursday, 16 April 2020

1 Resources

- Resources made available by the Department of Defence, Organs of State, National, provincial & local government including funding.
- National & provincial treasury must implement these regulations.
- Donor funding paid into a special fund solely for these purposes.

2 Gatherings

- All gatherings, regardless of the number of people (previously only over 100 people), are prohibited on any public road, building, place or premises including in the open air.
- Refusal to disperse may result in your arrest and detention.
- Not more than 50 people are allowed at premises where liquor is sold and consumed however no liquor may be sold during the lockdown.
- Exception: Funerals with less than 50 people will be allowed however night vigils are prohibited and all safety measures must be strictly adhered to.

3 Non-refusal

- If displaying recognisable COVID-19 symptoms and/or confirmed to have the virus after a test, you may not refuse:
 - A medical examination including providing a bodily sample.
 - To be admitted to a health establishment, Quarantine or Isolation (Qol) site.
 - Treatment, Qol to prevent transmission.
- Refusal to comply may result in your mandatory Qol for 48 hours.
- No entitlement to compensation for any loss or damage for any bona fide action or omission during lockdown and/or whilst the state of emergency remains.

4 Places

- Sites must be made available nationally for Qol, as the need arises.
- If a person refuses to go to a Qol site, a court order will be obtained to force you to such Qol site or medical examination.

5 Schools & partial care facilities

- Closed from 18 March 2020 until 15 April 2020, which may be extended. Note: Schools may only open after the lockdown has been lifted.

6 Public visits suspended for 30 days (until at least 18 April 2020)

- Correctional Centres, Remand Detention Facilities, Holding Cells, Military Detention Facilities, Department of Social Development (incl. Child & Youth Care Centres, Shelters, One Stop Centres & Treatment Centres).

7 Liquor

- During lockdown no liquor may be sold or transported under any circumstances by any establishment or person.
- Once lifted, and while during the national state of disaster remains:
 - all taverns, restaurants and clubs, selling liquor must:
 - be closed with immediate effect; or
 - not accommodate more than 50 people on the condition that there is adequate space and hygienic conditions are enforced.
 - all hotels and lodges, who sell liquor, must implement measures to stop the spread of the virus on the condition that there is adequate space and hygienic conditions are enforced.

8 Emergency Procurement

- Subject to:
 - Public Finance Management Act.
 - Municipal Finance Management Act.

9 Ministerial directions

- The Ministers of Health, Justice and Correctional Services, Basic and Higher Education, Police, Social Development, Trade and Industry and Transport may issue and amend instructions to their various departments, including any additional measures, to address, prevent and combat the spread of the virus.

10 Offences & Penalties

- Fine or imprisonment for 6 months or both, if you:
 - Fail to comply with 2, 5, 8 and 11.
 - Misrepresent that you (or someone else) have the virus.
 - Publish a statement, even on social media, meant to deceive any person about the virus, infection status of a person or any government measures to address the virus.
- If you intentionally expose another to the virus you may be charged with assault, attempted murder or murder.

11 Restriction of movement during lockdown

- All persons must stay at home (or their temporary residence) unless performing an essential service, obtaining an essential good, collecting a social grant or serious medical assistance (i.e. emergency, life-saving or chronic).
- No moving between provinces, cities or suburbs and our borders remain closed except for transporting fuel and essential goods.
- All businesses, retail shops and malls to close except those in the making, supply or provision of essential goods or services. Only essential goods or services may be supplied and must ensure that customers keep a safe distance of 1 square meter apart.
- Foreign tourists must remain where they are for the duration of the lockdown.

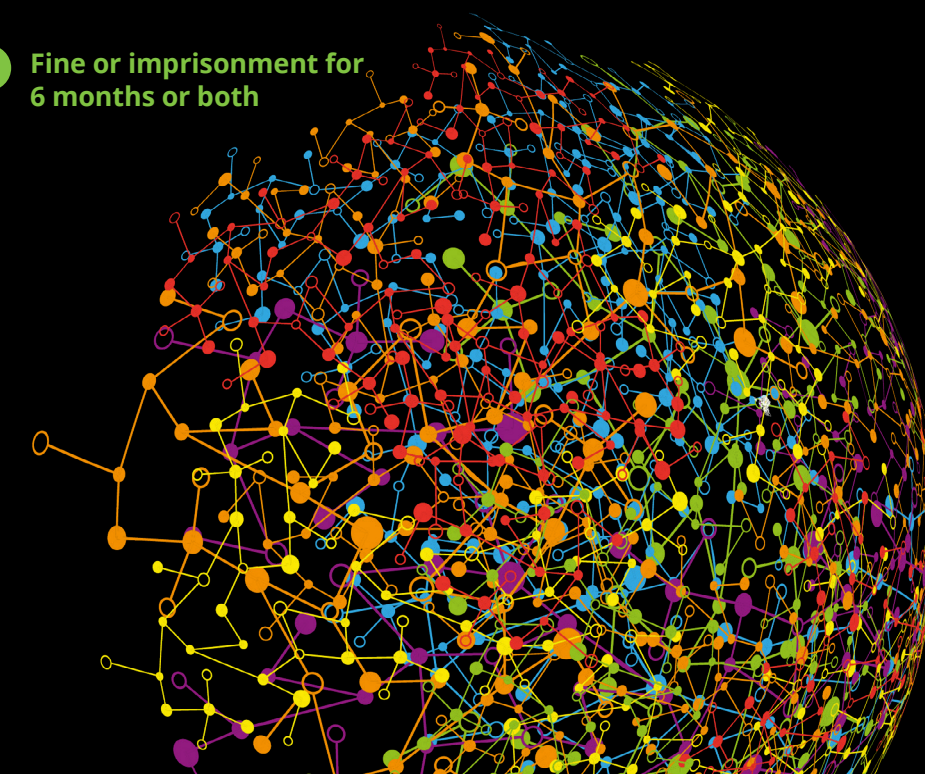
12 No public transport during lockdown

- All transport is prohibited except movement by car, bus and taxi (incl. e-hailing) as indicated in 11 above, limited to 50% of licensed capacity.
- Employers of persons rendering essential services must make necessary travel arrangements for their staff.

13 State resources during lockdown

- Persons may be evacuated to temporary shelters to save their life.
- The state will identify temporary shelters for homeless people and sites for Qol for those that cannot self-Qol.

Fine or imprisonment for 6 months or both



Lockdown will be from 23h59 on Thursday, 26 March 2020 to 23h59 on Thursday, 16 April 2020



Essential goods and services

- Food (incl. pet food), cold drinks and chemicals/packaging used to produce food.
- Cleaning and hygiene products.
- Medical supplies, equipment and chemicals/packaging used to produce these.
- Fuel (incl. coal and gas).
- Basic goods (incl. airtime and electricity).



Essential services

- Medical, health (incl. mental health), laboratory and medical services.
- Disaster management, fire prevention and fighting and emergency services.
- Financial services that maintain the banking and payments system (incl. JSE, similar exchanges and insurance services).
- Production and sale of essential goods.
- Grocery stores and spaza shops.
- Electricity, water, gas and fuel production, supply and maintenance.
- Essential government services.
- Birth and death certificates and replacement of ID documents.
- Essential municipal services.
- Care services and social relief for older persons, mentally ill, those with disabilities, sick persons and children.
- Funeral services (incl. mortuaries).
- Wildlife management, anti-poaching, animal care and veterinary services.
- Newspaper, broadcasting and telecommunications infrastructure and services.
- Production and sale of chemicals, hygiene products, pharmaceuticals for the medical and retail sector.
- Cleaning, sanitation, sewage, waste and refuse removal.
- Courts and related requirements (i.e. judges, sheriffs and attorneys/advocates).
- SARS.
- Police and related security services (incl. peace, traffic, correctional services officers, military and private security).
- Postal and courier services for transporting medical products.
- Air traffic, Civil Aviation Authority, Cargo shipping and dockyard services.
- Gold, gold refinery, coal and essential mining.
- Accommodation for person rendering essential services or in QoI during lockdown.
- All services in relation to rendering essential services or goods and transporting patients.
- Services rendered by members of our local, provincial and executive government.
- Commissioners who ensure protection of public rights (i.e. human rights, gender, cultural, religious and linguistic and the public protector).
- Transporting and logistics of essential goods to neighbouring countries.

Contacts

Candice Holland
canholland@deloitte.co.za

Natalie Hodgson
nahodgson@deloitte.co.za