

Deloitte.

Deloitte IFRS 17
digital training solution



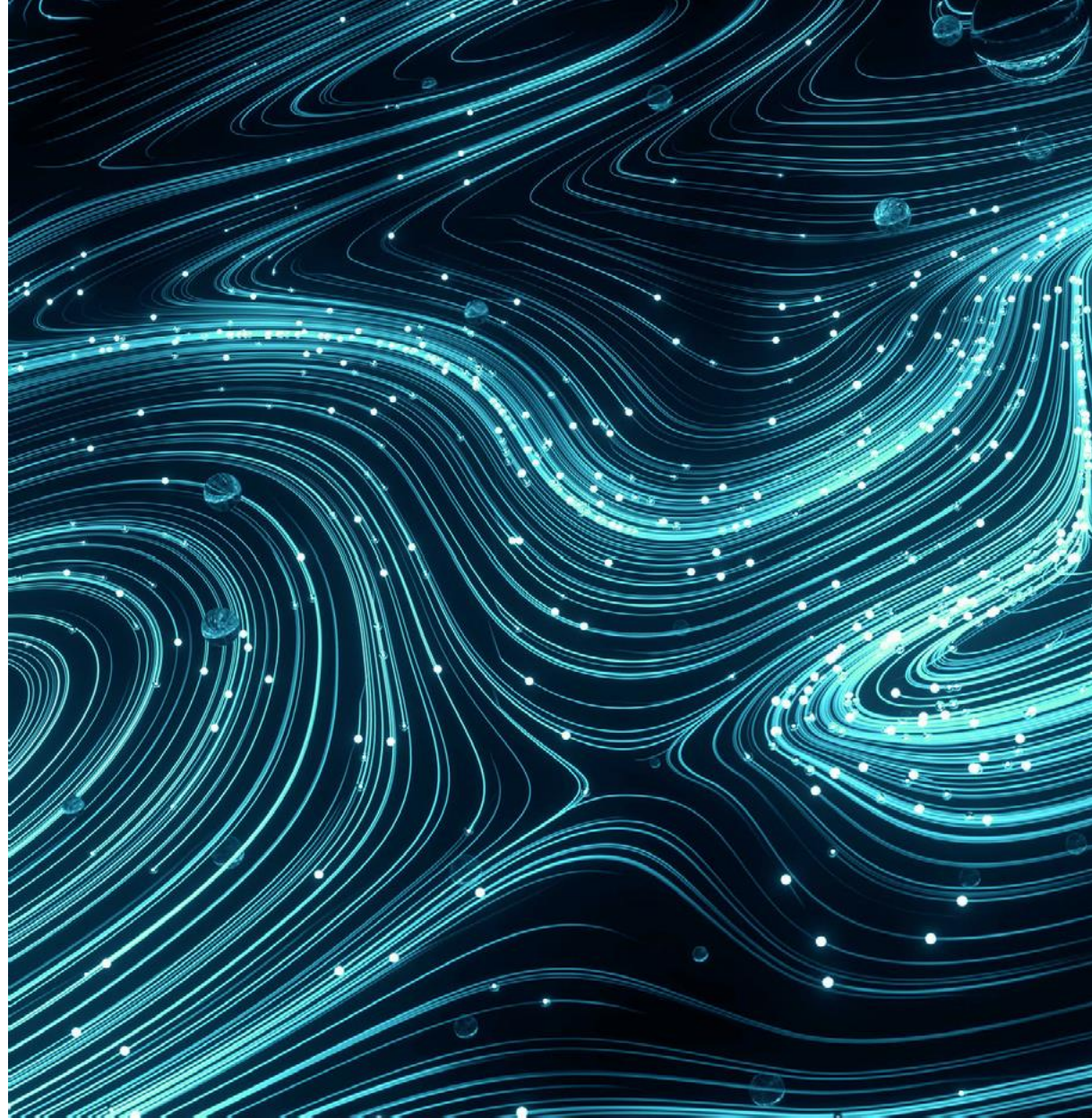
“As a NED for a listed insurer, the digital learning by Deloitte is a great way to demystify the complex technical requirements of IFRS17 and has enabled me to understand the practical implications of the requirements. This has been especially useful as we start to look at initial results coming from the financial reporting team”

Non Executive Director, Listed Insurer.

Deloitte IFRS 17 digital training solution

IFRS 17, the new international financial reporting standard for insurance contracts, is creating significant changes for insurers.

It is a highly technical standard which requires a wide and diverse group of disciplines within the organisation to acquire more about IFRS 17 and its practical implications on financial reporting processes.



In order to support IFRS 17 implementation programmes we have built a training solution with 4 pillars:



Training aligned to the finance reporting structure required by IFRS 17.



A simplified integrated accounting and actuarial model that translates the requirements of IFRS 17 into the financial postings.



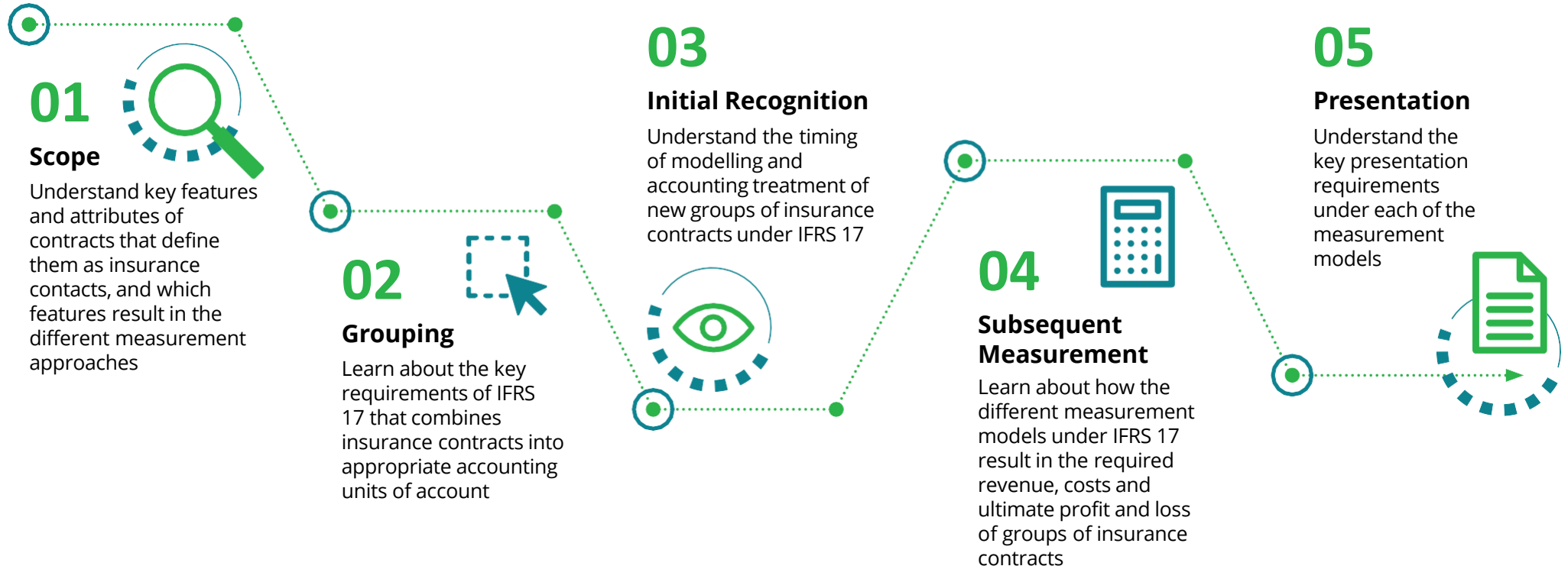
Address the different levels of knowledge required by the multiple audiences who have different training requirements.



A modular structure that is broken down into manageable sections and encourages the self-exploration of topics in an order and at a pace which best suits users.



Aligned to the finance reporting structure required by IFRS 17...





...backed with a simplified integrated accounting and actuarial model

IFRS17 | Premium Allocation Approach



EXAMPLE | Presentation

CONSOLIDATED SOCI / INCOME STATEMENT	I1	Y1	Y2
Insurance contract revenue	60 000	120 000	-
Insurance service and expenses incurred	(49 304)	(84 024)	2400
Incurring claims and insurance contract expenses	37 304	73 158	2 400
Allocated recovery of insurance acquisition cash flows	12 000	24 000	
Change in fulfilment cash flows relating to the LIC	-	(13 134)	-
Losses in onerous groups and loss reversals	-		
Insurance service result	10 696	35 976	2400
Investment return	(951)	(2 245)	(132)
Net finance expenses from insurance contracts held	951	2 245	132
Net investment result			
Other operating expenses	-	-	-
Profit before tax	9 745	33 732	2 268



INSURANCE SERVICE EXPENSES

I1 LRC – Acquisition costs	12 000
I1 ISE – Claims & claims expenses I1 LIC	28 458
– RA raised on LIC	2 846
I2 Cash – Maintenance expenses	6 000
I1 TOTAL FOR THE YEAR	49 304
I2 LRC – Acquisition costs	12 000
I2 LIC PVFCF – Claims & expenses incurred	29 322
I2 LIC RA – Claims & expenses incurred	2 932
I2 Cash – Maintenance expenses	6 000
Y1 TOTAL FOR THE YEAR	84 024

I2 LIC – Re-estimation of PVFCF	11 940
I2 LIC RA – Claims release	2 400
I2 LIC RA – Re-estimation of RA	1194
I2 LIC RA – Claims release	2 400
Y2 TOTAL FOR THE YEAR	2 400



....addressing the different levels of knowledge required by multiple audiences

The Deloitte platform provides a single and flexible structure that is targeted to specific roles:

MODULE	ALL FUNCTIONS	UNDERWRITING	ACTUARIAL VALUATION	ACTUARIAL PRICING	FINANCIAL REPORTING	FINANCIAL OPERATIONS	FINANCIAL MI AND PLANNING	TECHNICAL ACCOUNTING	IT, DATA & TESTING
Introduction to IFRS 17	✓	✓	✓	✓	✓	✓	✓	✓	✓
GMM: Theory and practical			✓		✓	✓		✓	✓
PAA: Theory and practical			✓		✓	✓			✓
VFA: Theory and practical			✓		✓	✓			✓
Reinsurance: Theory and practical			✓		✓	✓			✓
Transition			✓					✓	
Disclosure					✓			✓	

Principles we have followed to build an engaging, impactful and flexible digital learning solution:



Use of **mixed media** (videos, written, animated and spoken) content to engage the audience



Interactive elements to retain the audiences attention and reinforce the learnings with knowledge checks and test



Short modules to use time efficiently and segmented content to target various audience groups



Segmented content to target various audience groups



Classroom material in video



Includes self-assessments and knowledge checks. Provides learners with a certificate of completion at the end of each module



....in a modular syllabus structure (core modules)

Our training both recognises the nuances of the IFRS 17 measurement models and the different principles imposed by IFRS 17 on the treatment of direct and reinsurance contracts.

 eLearning | 30min

Introduction to IFRS 17

Introduces the new IFRS 17 Standard and its purposes and objectives, as well as the financial reporting process that insurers need to follow under IFRS 17. Includes formative knowledge checks and a summative assessment.

 eLearning | 30min

Premium Allocation Approach (Theory)

Introduces the simplified approach to measuring the LRC, and explains how this approach will be applied in accordance with IFRS 17. Includes formative knowledge checks and a summative assessment.

 eLearning | 45min

General Measurement Model (Theory)

Introduces the standard approach to reporting the financial performance and position of insurance contracts, and explains how it will be applied in accordance with IFRS 17. Includes formative knowledge checks and a summative assessment.

 eLearning | 45min

Reinsurance Contracts Held (Theory)

Introduces the approaches that IFRS 17 permits for reporting the financial performance and financial position of reinsurance contracts held and explores how these approaches will be applied in accordance with IFRS 17. Includes formative knowledge checks and a summative assessment.

 eLearning | 45min

Variable Fee Approach (Theory)

Introduces the VFA, a modification of the GMM, used to report the financial performance and position of insurance contracts and investment contracts with direct participation features. Includes formative knowledge checks and a summative assessment.

 eLearning | 30min

Disclosure

Covers the disclosure requirements as set out in IFRS 17. Includes formative knowledge checks and a summative assessment.

 eLearning | 45min

Premium Allocation Approach (Practical)

Explores practical examples to gain a greater understanding of the PAA. Users can apply theory to practical scenarios that are linked to simplified insurance products, with actuarial models and related accounting entries. No assessment.

 eLearning | 45min

General Measurement Model (Practical)

Explores practical examples to gain a greater understanding of the GMM. Users can apply theory to practical scenarios that are linked to simplified insurance products, with actuarial models and related accounting entries. No assessment.

 eLearning | 45min

Reinsurance Contracts Held (Practical)

Explores practical examples to gain a greater understanding of Reinsurance. Users can apply theory to practical scenarios that are linked to simplified insurance products, with actuarial models and related accounting entries. No assessment.

 eLearning | 45min

Variable Fee Approach (Practical)

Explores practical examples to gain a greater understanding of the VFA. Users can apply theory to practical scenarios that are linked to simplified insurance products, with actuarial models and related accounting entries. No assessment.

 eLearning | 20min

Transition

Explores an insurer's transition from IFRS 4 to IFRS 17 according to specific requirements. Includes formative knowledge checks and a summative assessment.

Timings are approximate



....in a modular syllabus structure (short burst modules)

There are also short burst modules available (in addition to the core modules) that dive into some more detail on a specific topic.



eLearning | 20min

Discount Rates

Explores discount rates and how they are derived and applied in accordance with IFRS 17. No knowledge checks / assessment.



eLearning | 20min

Risk Adjustment

Explores the principles and requirements of IFRS 17 as they relate to the risk adjustment for non-financial risk, often referred to as the risk adjustment, or RA. No knowledge checks / assessment.



eLearning | 25min

Attributable Cash Flows

Explores the IFRS 17 requirements to measure and report on acquisition and cost cash flows attributable to insurance contracts. No knowledge checks / assessment.



eLearning | 20min

The OCI Election

Explores the IFRS 17 accounting policy choice that allows insurers to disaggregate IFIE between P&L and other comprehensive income (or OCI). No knowledge checks / assessment.



eLearning | 20min

Coverage Units

Explores the purpose, principles and requirements of IFRS 17 as they relate to the determination and use of coverage units for insurance contracts. No knowledge checks / assessment.



eLearning | 30min

The Risk Mitigation Option

Explores the purpose, eligibility criteria and requirements of IFRS 17 as they relate to the determination and use of the risk mitigation option under the VFA. No knowledge checks / assessment.

Timings are approximate

User Experience

To ensure an interactive and meaningful training experience, the IFRS 17 training solution makes use of:

1. **Mixed media**, including diagrams, graphs, financial statements, and animations.

IFRS 17 | Introduction to IFRS 17

Why IFRS 17?

The implications of this IFRS transformation initiative are not just in the technical calculations, but are affecting...

Actuarial (Reserving)

Finance (General ledger and reporting processes)

Tax (Treatment)

...just to name a few.

Deloitte.

IFRS 17 | Premium Allocation Approach

EXAMPLE 1 | Subsequent Measurement
Determine Insurance revenue & re-measure LRC

Once the revenue for the period is determined, we need to re-measure the LRC. In order to calculate the LRC at the **Interim reporting period**:

LRC measured under PAA	
Opening balance	96 000
Insurance Revenue for coverage provided during the period	(60 000)
Amortisation of acquisition cash flows	12 000
New premium received	0
New acquisition cash flows	0
Effect of time value of money	0
Investment components	0
LRC at subsequent measurement, i.e. reporting period end	48 000

CU 120 000 x 50%

CU 24 000 x 50%

No further transactions

No further transactions

Deloitte.

Click on » to continue.

User Experience (continued)

To ensure an interactive and meaningful training experience, the IFRS 17 training solution makes use of:

2. **Interactive elements** that provide the opportunity for learners to deep dive into additional information, as well as apply the theory in practical scenarios.

IFRS 17 | Introduction to IFRS 17

Why IFRS 17? | IFRS 4 Challenges

In order to understand the key features of IFRS 17, it is useful to consider some of the challenges of IFRS 4, IFRS 17's predecessor.

More focussed on Statement of Financial Position

Disparity in the measurement of insurance contract provisions

Inconsistencies carry through to Statement of Financial Performance

Inconsistencies between reported revenue and costs of services rendered

Insufficient disclosure of information

Insurers need to raise provisions to ensure they meet their future insurance contract obligations. These provisions are also referred to as policyholder or actuarial liabilities. IFRS 4 allowed insurance entities to define the way they estimate these provisions in the Statement of Financial Position.

The methods applied under IFRS 4 are normally aligned to insurers' regulatory reporting regimes, which allows for a high degree of conservatism and creates disparity from country to country, and insurer to insurer.

Statement of Financial Position	
Assets	
Fixed Assets	X
Cash and Cash Equivalents	X
Total Assets	X
Equity and Liabilities	
Equity	
Accumulated Profits/Losses	X
Total Equity	X
Liabilities	
Insurance Contracts Provisions	X
Other Liabilities	X
Total Liabilities	X
Total Equity and Liabilities	(X)

Click on each tab to learn about the IFRS 4 issues that IFRS 17 aims to address.

IFRS 17 | Introduction to IFRS 17

03 | Initial Recognition | The Building Block Approach

The Building Block Approach (BBA) is used to determine the carrying value of a group of insurance contracts.

Click on each block to learn more. Click on Block 1 to start.

User Experience (continued)

To ensure an interactive and meaningful training experience, the IFRS 17 training solution makes use of:

3. **Formative knowledge checks** to encourage pause and reflect points, and **formal summative assessments** to validate knowledge gained and prove competency.

IFRS 17 | Introduction to IFRS 17 | Assessment

Question 3

Drag and drop each item to its matching description.

Liability for Remaining Coverage

Liability for Incurred Claims

Represents the expected cash flows relating to incurred claims, both reported and not yet reported, from the past coverage period not settled yet. It includes other incurred insurance expenses.

Represents the expected cash flows relating to future service and the share of unearned profit not yet recognised.

SUBMIT

Deloitte.

IFRS 17 | Premium Allocation Approach

EXAMPLE 1 | KNOWLEDGE CHECK

Think about the previous step and try and complete the following journal entries...

What are the journal entries for these transactions at initial recognition (Y0)?

Enter the correct values in the fields provided.

LRC at Initial Recognition	Present value of cash flows
Premium receipts	120 000
Insurance acquisition costs deferred	(24 000)
De-recognition of previously recognised acquisition cash flows assets or liabilities	0
LRC	96 000

Click to enlarge

SOPP

Y0 Cash - Acquisition CFs

LRC

Y0 Cash - Premium receipt

SOPP

Y0 Cash - Premium receipt

CASH AND CASH EQUIVALENTS

Y0 Cash - Acquisition CFs

Submit

Deloitte.

Getting Access

Hosting has been designed to respond to different training platform needs. On selecting the unlimited user access option, the digital training can be:

- deployed into client learning management systems as part of staff training requirements; or
- hosted on the Deloitte learning platform where Deloitte will support user rights management and administration.

Pricing structure

Pricing can be structured to allow for unlimited user access or on a per user basis, depending on clients' needs.



Who to talk to

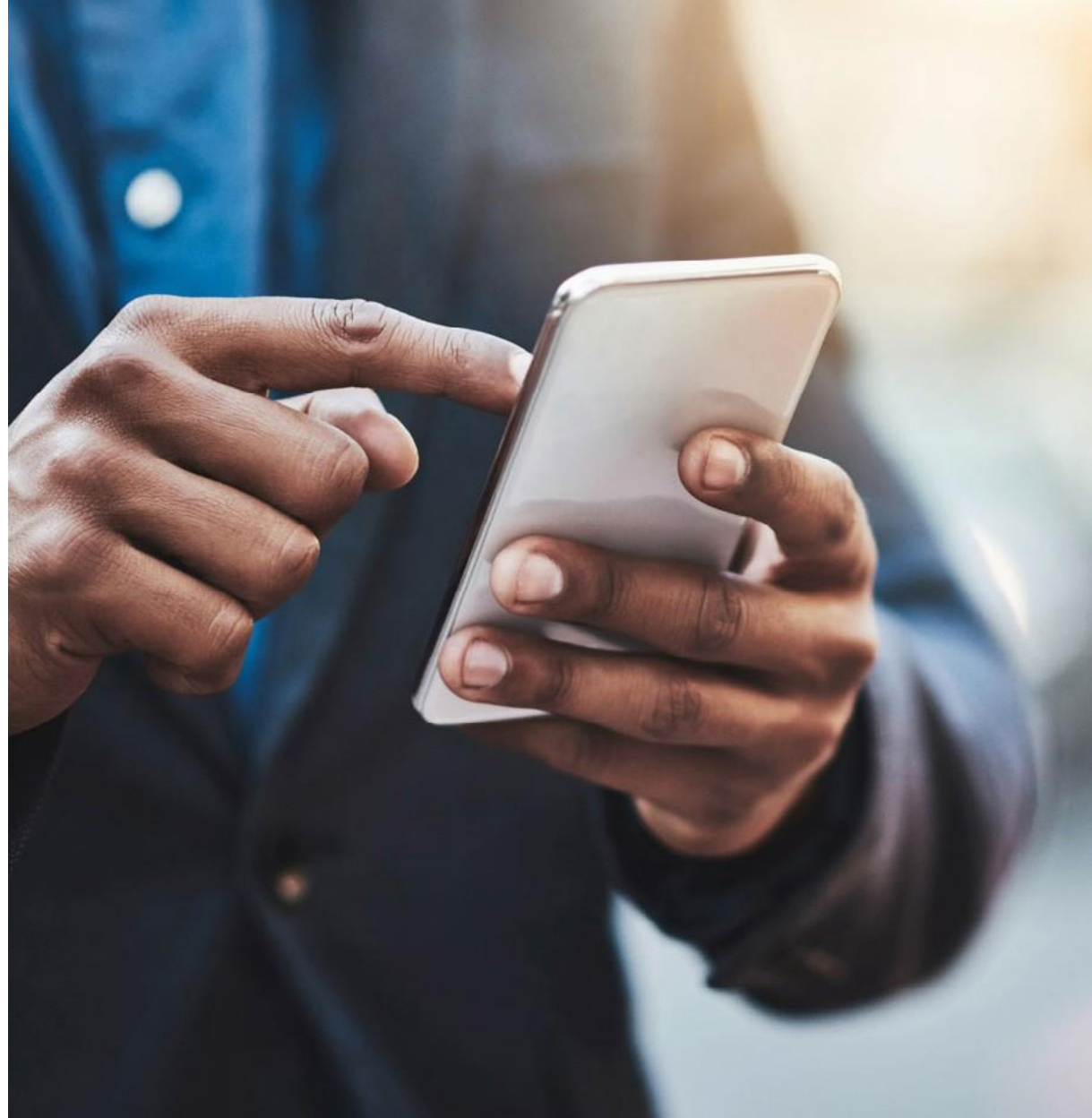


Andrew Warren
anwarren@deloitte.co.za
+27 11 202 7423



Amit Bhana
abhana@deloitte.co.za
+27 11 209 8438

For more information please contact:
ifrs17e-learning@deloitte.co.za





Deloitte refers to one or more of Deloitte Touche Tohmatsu Limited (“DTTL”), its global network of member firms, and their related entities (collectively, the “Deloitte organization”). DTTL (also referred to as “Deloitte Global”) and each of its member firms and related entities are legally separate and independent entities, which cannot obligate or bind each other in respect of third parties. DTTL and each DTTL member firm and related entity is liable only for its own acts and omissions, and not those of each other. DTTL does not provide services to clients. Please see www.deloitte.com/about to learn more.

Deloitte is a leading global provider of audit and assurance, consulting, financial advisory, risk advisory, tax and related services. Our global network of member firms and related entities in more than 150 countries and territories (collectively, the “Deloitte organization”) serves four out of five Fortune Global 500® companies. Learn how Deloitte’s approximately 330,000 people make an impact that matters at www.deloitte.com.

This communication contains general information only, and none of Deloitte Touche Tohmatsu Limited (“DTTL”), its global network of member firms or their related entities (collectively, the “Deloitte organization”) is, by means of this communication, rendering professional advice or services. Before making any decision or taking any action that may affect your finances or your business, you should consult a qualified professional adviser.

No representations, warranties or undertakings (express or implied) are given as to the accuracy or completeness of the information in this communication, and none of DTTL, its member firms, related entities, employees or agents shall be liable or responsible for any loss or damage whatsoever arising directly or indirectly in connection with any person relying on this communication. DTTL and each of its member firms, and their related entities, are legally separate and independent entities.

© 2021. For information, contact Deloitte Touche Tohmatsu Limited. Designed and produced by Creative Solutions at Deloitte, Johannesburg. (000000/ant)