

Safer today more sustainable tomorrow

While the UN’s 17 Sustainable Development Goals are a call to action to countries to end poverty, protect the planet and improve the lives and prospects of their citizens, it also clearly places the emphasis on business to take up the challenge and play an instrumental role in developing dynamic, sustainable, inclusive, and people-centred working environments, with a strong emphasis on addressing inequalities, discrimination, youth unemployment and decent work and livelihoods for all.

Like all other business in South Africa we are confronted with an ever-changing world. Where your success is not only measured by the profit you make or the Rands you bank, but by the lives you’ve touched.

Sustainability Strategy

In 2021, we embarked on a journey, with the express intention of answering one single question – how do we transform our business into one that considers the environment and contributes to economic development as well as social inclusion?

In developing our sustainability strategy, we embarked on an internal analysis and consulted with our stakeholders to identify the following 3 broad objectives, with specific activities for each, as summarised below:

Establishing a safety culture that puts the safety of our people at the centre of what we do.

Creating a values-based, performance led culture that empowers our employees and creates opportunities for personal and professional development.

Building sustainable communities, based on the principles of partnerships and inclusion, while creating lasting impact.

Implementing and maintaining an effective governance structure.

Establishing an ethical business culture, grounded in integrity and accountability.

Reducing Greenhouse Gas Emissions and embracing low carbon business processes and activities.

Waste reduction & adopting a life cycle approach to business inputs.

Improved use of renewable and non-renewable resources in our service delivery.

Sustainable procurement strategy, with a strong emphasis on locally sourced.

The effective identification of material risks and the implementation of systems to mitigate the risk.



Legal and regulatory compliance

Sustainable Development Defining Our Purpose



The 2030 Agenda for Sustainable Development, adopted by all United Nations Member States in 2015, provides a shared blueprint for peace and prosperity for people and the planet, now and into the future.

At its heart are the 17 Sustainable Development Goals (SDGs), which are an urgent call for action by all countries - developed and developing - in a global partnership.

They recognize that ending poverty and other deprivations must go hand-in-hand with strategies that improve health and education, reduce inequality, and spur economic growth – all while tackling climate change and working to preserve our oceans and forests.

Source: United Nations | Department of Economic & Social Affairs | Sustainable Development

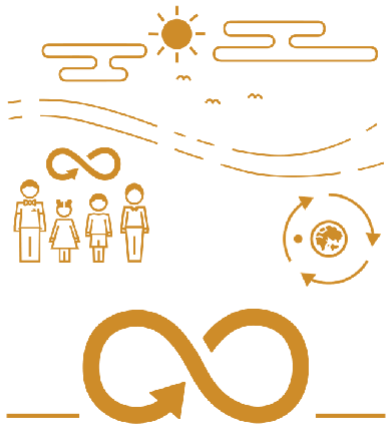


SUSTAINABLE DEVELOPMENT GOALS



Of the 17 sustainable goals we have narrowed it down to actively support and contribute to three sustainable goals where we believe we can make an impact directly and speaks directly to our sustainability strategy.

12 RESPONSIBLE CONSUMPTION AND PRODUCTION



RESPONSIBLE CONSUMPTION & PRODUCTION

‘Worldwide consumption and production - a driving force of the global economy - rest on the use of the natural environment and resources in a way that continues to have destructive impacts on the planet.

Economic and social progress over the last century has been accompanied by environmental degradation that is endangering the very systems on which our future development - indeed, our very survival - depends.’

Sustainable consumption and production can ‘contribute substantially to poverty alleviation and the transition towards low-carbon and green economies.’ It is about doing more and better with less. It is also about decoupling economic growth from environmental degradation, increasing resource efficiency and promoting sustainable lifestyles.’

This allows us to not be all things to all opportunities and add value where we have a degree of control.

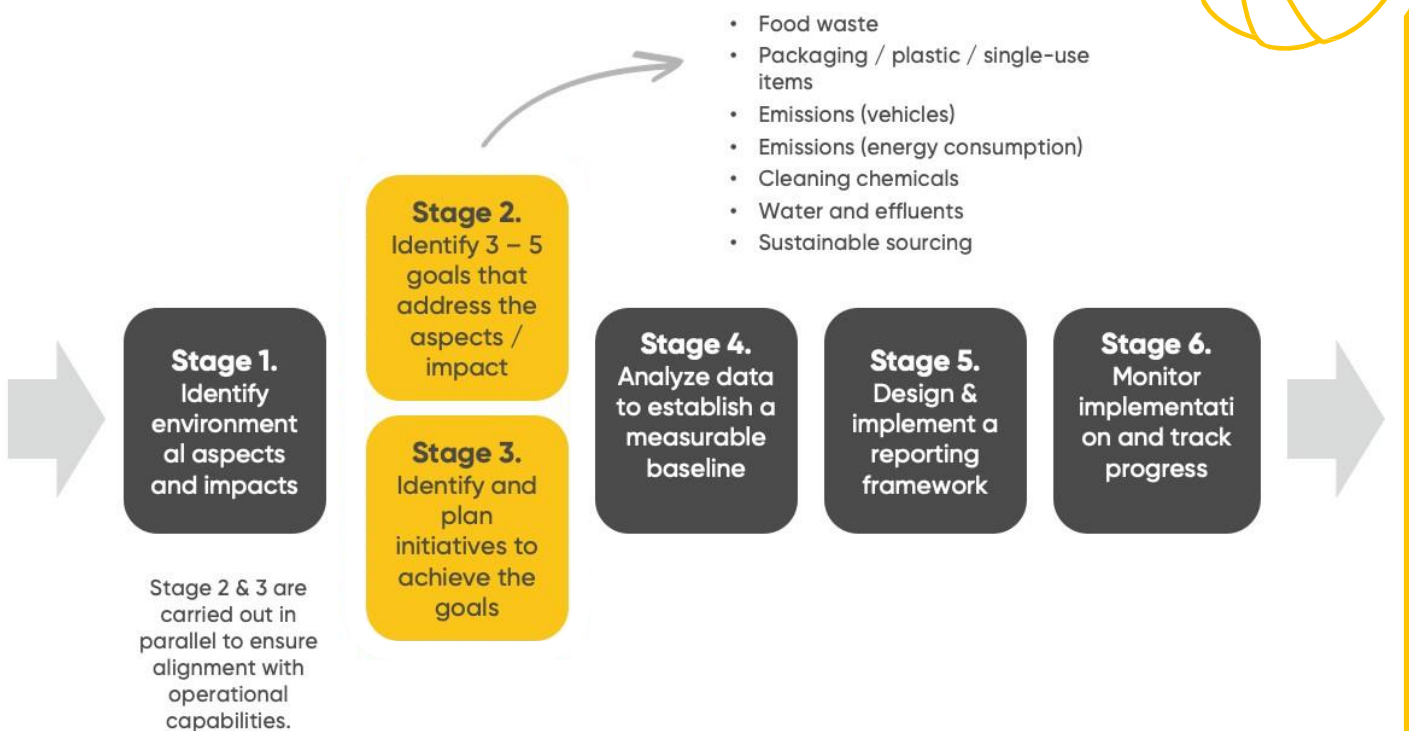
Understanding our impact on the Environment

As a multiservice company, Empact Group recognizes the impact our operations have on the environment:

- Through our operations we contribute to the production of carbon emissions which are directly responsible for global warming.
- Through our operations we use water, a scarce resource and potentially impact the quality and safety of water through chemical and other contamination.
- Through our operations we contribute to the generation of waste, which places a significant burden on the environment and perpetuates the generation of more products that will ultimately become waste.

In addressing our environmental impact, we have embarked on a clearly defined process, to re-design our operational activities with the intention of reducing our carbon emission, preserving water and minimizing its usage and significantly reducing the waste we generate.

FY23 Environmental Strategy



Environmental: The Legacy We Leave

OUR PLANET IS IN TROUBLE

- A recent report from the UN noted a frightening reality, 'should the global population reach 9.6 billion by 2050, the equivalent of almost three planets would be required to provide the natural resources needed to sustain current lifestyles. We would need to more than double our food production with less than half the resources we currently use, to feed the population.
- The rapid climate change we are seeing is caused by human activity – heavily dependent on fossil fuels, which release greenhouse gases - mostly carbon dioxide (CO₂). These gases trap the sun's heat and cause the planet's temperature to rise.
- The rise in temperature must slow down if we want to avoid the worst consequences of climate change. According to scientists global warming needs to be kept to 1.5°C by 2100. Unless further action is taken, the planet could still warm by more than 2°C by the end of this century.
- In South Africa, more than 12 million people go to bed hungry at night. 30% of all food produced in south Africa is lost or wasted. It is estimated that globally between 30-50% of produced food is wasted before reaching consumers.

Food waste has a triple negative effect; it impacts on food security, resources used in food production and distribution are wasted and Environmental impacts throughout the supply chain

EQUALS THE WEIGHT OF
1.636 MILLION
ELEPHANTS*



Approximately **9 million** of the 29 million tonnes of food produced in South Africa every year is lost or wasted, almost a **third** of national annual food production (CSIR, 2012).

Food waste and food loss result in a decrease of food security

Around 70% of all low-income urban households are deemed to be significantly or severely food insecure (CSIR, 2012).

OVER **11 MILLION** SOUTH AFRICANS ARE **FOOD INSECURE***

OVER **9 MILLION** HOUSEHOLDS DON'T HAVE ACCESS TO **CLEAN WATER***



Food waste and food loss result in a loss of resources

Land, water, nutrients and energy resources are wasted, an issue highlighted in the 'food-energy-water nexus'.

WATER WASTED
EVERY YEAR COULD FILL



6 OLYMPIC SIZE SWIMMING POOLS*

ENERGY LOST
THROUGH THE FOOD WE WASTE EVERY YEAR COULD POWER JOBURG FOR **20 YEARS***

R61 BILLION

2.1% OF THE SOUTH AFRICAN GDP

The food waste issue also results in a significant number of lost economic opportunities.

The total value of annual food waste and losses equates to around R61 billion (CSIR, 2012).


* Picture derived from infographics created by the WWF. Based on South African statistics.

Our Environmental Sustainability

ENVIRONMENTAL CONTRIBUTION

As a multiservice company, we recognise the impact our operations have on the environment.

Through this recognition we are committed to:

- Identifying the various waste streams within our organisation and taking practical steps to improve our management and reduction of waste;
 - The responsible management of water and reducing wasteful consumption through improved processes and management;
 - Reducing the use of disposable and single-use packaging;
 - Working with our suppliers to implement programs to reduce unnecessary packaging in the supply chain and to eliminate packaging substrates that have a negative environmental impact;
 - Reducing our carbon emissions through responsible sourcing and procurement practices with the focus on local suppliers;
 - Developing our environmental management system and standard operating procedures to ensure that we improve our environmental performance year on year;
 - Ensuring that our employees are aware of our Environmental Policy and through ongoing and engaged communication they will be inspired and motivated to adhere to these initiatives and become environmental champions within their own communities;
 - Complying with relevant South African Environmental and Waste Management legislation and regulations;
 - Partnering with our clients, suppliers and contractors to raise and maintain awareness and encourage action to promote environmental stewardship across all levels of our organisation; and
 - Reporting on and reviewing the implementation of our environmental initiatives and setting annual targets for continuous improvement.
- 

How do we transition from a linear or recycle economy to circular economy?

Linear Economy: For a long time, our economy has been 'linear'. This means that raw materials are used to make a product, and after its use any waste (e.g. packaging) is thrown away.

Recycling Economy: In an economy based on recycling, materials are reused. For example, waste glass is used to make new glass and wastepaper is used to make new paper.

Circular Economy: Preventing waste by designing and making products and materials more efficiently and reusing them. If new raw materials are needed, they must be obtained sustainably with minimal or no environmental impact.

We strongly believe that we have a responsibility to mobilise and educate all generations to protect our planet. All generations must make better choices in what we consume, we must educate to influence decision-making. By initiating tangible initiatives we engage our people to make a positive impact on our environment:

Trim Trax

Trim Trax is our internal waste measurement programme. We make use of clear containers in the kitchen to monitor and track food waste. All offcuts, peels, seeds, etc from fresh produce is measured daily and recorded for action. We peg a rand value to the food waste – we can reduce waste through the clear containers which create awareness amongst our teams to minimise waste. We train our teams on site and track our progress.



Biobin

Using Biobin, food-waste is fermented in anaerobic digesters. The fermentation process stabilises waste, ridding it of pathogens and stopping the production of Greenhouse Gases such as methane (20x more dangerous to the environment than CO₂). During fermentation, probiotic bacteria break down protein chains into amino acids allowing for quick post-fermentation treatment and nutrient take-up by plants.

After fermentation, food-waste can be safely composted, used in trench gardening, and used as a highly nutritious quickly consumed worm food.



Packaging

We make use of a tailor-made Empact Group food wrap which is used to wrap individual items. As it is produced in bulk for all our business across the country, it is extremely cost effective. An added bonus is that it is aesthetically pleasing to the eye and very functional.

When it comes to functions and events, we like opting for bamboo alternatives. Imagine your snacks are served 'street-food' style in little bamboo boats or cones with little wooden forks or spoons? Why trek those heavy impractical side plates around all the time? Not only do they break, but they also go missing. The bamboo products are also fully compostable.

The salad tubs, sandwich wedges and other grab 'n go product packaging we would use are made of either corn starch or bagasse (sugar cane mass) and also biodegrade into the earth within a few weeks!

This is a simple way to make an impact.

