



# USAID Afya Yangu Southern Program

## Program Overview

# Program Overview

**Title:** USAID Afya Yangu - Southern Program

**Program Duration:** 5 Years (November 2021 to November 2026)

**Budget:** \$102 Million

**Focus Areas:** HIV and TB as well as FP/HIV Integration

**Geographical Coverage:** Iringa, Lindi, Morogoro, Mtwara, Njombe and Ruvuma Regions

**Donor:** American People's - U.S. President's Emergency Plan for AIDS Relief (PEPFAR) and TB Fund, through the United States Agency for International Development (USAID)

**Contractor:** Deloitte Consulting Ltd

**Sub-Contractors:** Management and Development for Health (MDH) and T-MARC Tanzania.

**Implemented by:** LGAs, Health Facilities, CSOs, CBOs and FBOs



# Our Purpose



**Our Vision:** Healthier lives and thriving communities.



**Our Mission:** Increase demand for and use of high-quality integrated HIV-TB prevention, care and treatment services, particularly for youth and children, through a comprehensive client centered approach leading to improved health outcomes.



# Key Results Areas

## Intermediate Result 1:

Improved access to quality, client-centered HIV&TB services

- **Sub IR 1.1** – Improved access to quality health services at both the facility and community level
- **Sub IR 1.2** – Strengthen capacity of health work force to deliver client centered services

## Intermediate Result 2:

Improved ability of individuals to practice positive health-seeking behaviors

- **Sub IR 2.1** – Improved capacity, motivation and enabling environment related to health seeking behavior
- **Sub IR 2.2** – Increased community support for healthy behaviors

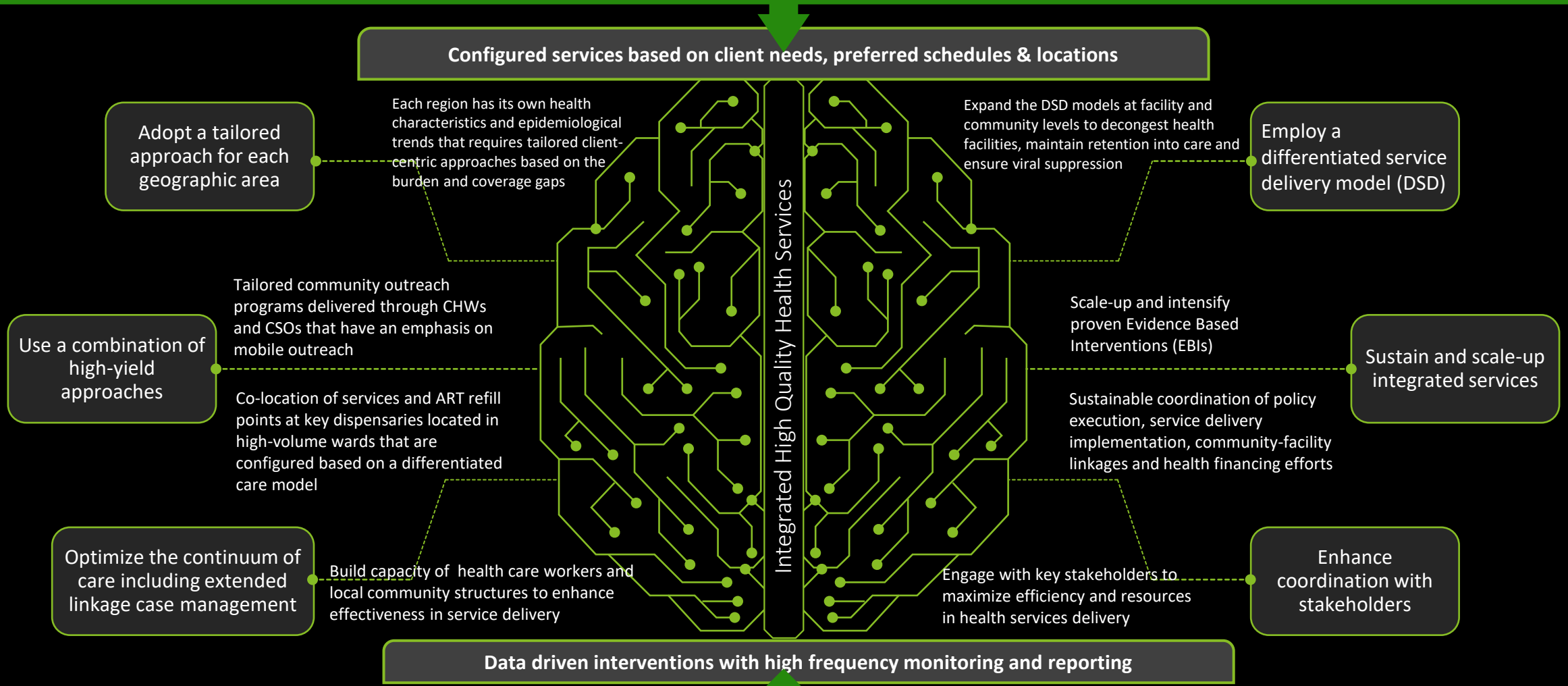
## Intermediate Result 3:

Enhanced enabling environment for quality HIV/TB service provision

- **Sub IR 3.1** - Improved availability of quality strategies, policies and guidelines to support health service delivery
- **Sub IR 3.2** – Increased engagement of communities and citizens for quality health service delivery
- **Sub IR 3.3** - Increased engagement and use of system wide reforms and governance structures that impact service provision

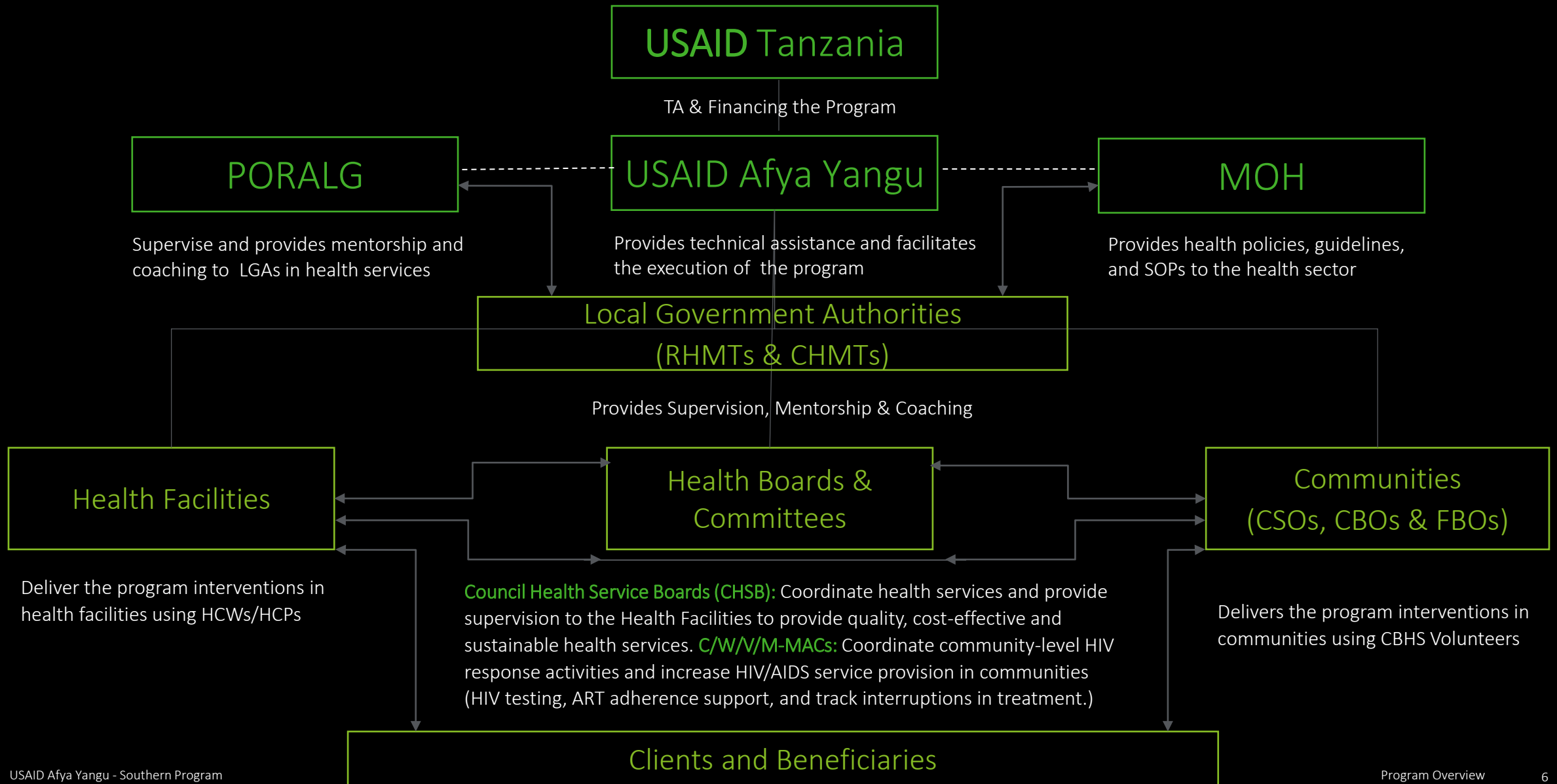
# Program Technical Approach

Results-based - Client Centric – Integrated – Comprehensive Health Service Delivery



Sustainability intrinsically embedded in each interventions with transition to local ownership clearly planned at the outset (launch) and executed during program implementation

# Program Delivery Structure



# Key Interventions

- ❑ HIV Testing Services
- ❑ HIV Care and Treatment
- ❑ TB Services
- ❑ Integrated FP/HIV Services
- ❑ Cervical Cancer Services
- ❑ Nutrition Services
- ❑ Laboratory Services Strengthening
- ❑ Health Commodities SCM
- ❑ Social Behavioral Change Interventions
- ❑ HRH Capacity Building
- ❑ Enabling Environment
- ❑ Gender and Women Empowerment
- ❑ Youth Inclusion
- ❑ Sustainability and Self-Reliance
- ❑ Program Integration

# Key Interventions: HIV and TB Services

## HIV Testing Services

The program will provide support in HIV Testing in the following modalities:

- Index Testing
- oPITC
- HIV Self-Testing (HIVST)
- Recency Testing
- Prevention of Mother to Child Transmission (PMTCT)
- Early Infant Diagnosis (EID)
- External Quality Assurance (EQA) for HIV Rapid Test (RT)

## HIV Care and Treatment

The program will support HIV Care and Treatment (Linkages and Retention) Services in these areas:

- Interruption in Treatment (IIT) and Tracking
- Multi-Month Dispensing (MMD) and DSD
- Children and Adolescents
- Male Friendly Services
- Unstable Clients
- OVC Platforms
- Pediatrics Treatment
- ART for PBFW
- HVL Coverage and VLS
- Client-Centered HIV Prevention

## TB Services

The Program will support TB screening through Integrated HIV/TB Screening Approaches in these areas:

- TB Screening, Prevention and Treatment in PLHIV
- TB Preventive Therapy (TPT)
- Active Case Finding (ACF)
- TB Diagnostics
- Community TB Services
- Multidrug-resistant TB



# Key Interventions: FP/HIV - Cervical Cancer - Nutrition Services

## FP/HIV Services

The Program will support Integrated FP/HIV Services to:

- Train and mentor HCWs for scaling up FP services.
- Strengthen the use of the exit desk.
- Support timely/accurate quantification and ordering of FP commodities.
- Integrate FP/HIV services in community ART outreach services.
- Conduct quarterly special FP/HIV events at lower-level CTCs.

## Cervical Cancer Services

The Program will support Cervical Cancer Prevention (CECAP) Services to:

- Increase CECAP coverage.
- Scale-up CECAP screening
- Train HCWs/site and provide continuous CECAP mentorship.
- Support the transport to facilitate referral of PLHIV for Cervical Cancer treatment.

## Nutrition Services

The Program will support Nutritional Assessment and Counselling Services (NACS) to:

- Provide onsite mentorship to HCW and community volunteers
- Support the provision of a comprehensive nutrition services package including prevention, detection, and management of malnutrition.
- Support nutrition services demand creation and peer support

# Key Interventions: Laboratory Services and Health Commodities SCM

## Laboratory Services

The Program will support Laboratory Services Strengthening through:

- Strengthening lab services for HIV/TB diagnosis and monitoring.
- Supporting in addressing gaps of workflow inefficiencies at testing labs, prolonged equipment downtime, reagent stockouts, and low performance.
- Supporting Laboratory accreditation, quality control and proficiency testing.
- Supporting adaptation of the SLMTA approach by assigning CQI initiative to all hubs and VL/EID labs.

## Health Commodities SCM

The Program will support Health Commodities Supply Chain Management through:

- Supporting the scale up of eLMIS and the PMD
- Reinforcing implementation of IMPACT teams to improve data demand
- Participating and providing TA in the national HIV/TB commodities quantification process.
- Monitoring the transition to optimal ARV regimes
- Promoting rational use of medicines through training and mentorship

# Key Interventions: SBC - HRH Capacity Building - Enabling Environment

## Social Behavioral Change

The Program will support Social Behavioral Change Interventions to:

- Scale up SITETEREKI Integrated Youth Platform
- Scale up FURAHA YANGU HIV Campaign
- Scale up NAWEZA Platform
- Engage Health Providers (Facility and Community) in behavioral change interventions
- Support participation on Health Days
- Provide interventions against GBV
- Strengthen the capacity of Regional and District Health Promotion Coordinators (R/DHPCO)
- Deliver Community-Led SBC activities
- Support Bi-Directional Referrals

## HRH Capacity Building

The program will support strengthening capacity of health workforce to deliver client-centered services to:

- Capacitate existing GoT HCWs
- Jointly work with the USAID-funded Afya Endelevu HRH project to participate/facilitate onboarding programs and performance monitoring/ management process for these HCWs (including data clerks).
- Closely monitor the performance of the hired HCWs in collaboration with the respective regions/ councils.
- Support the 6 regional, 44 councils and 152 CQI teams, and scale-up CQI teams to 304 sites.
- Facilitate regional/district mentors in routine monitoring and support via monthly onsite mentorship, and quarterly SS

## Enabling Environment

The Program will support Enabling Environment Interventions to:

- Support the availability and operationalization of national policies, guidelines, strategies, job aids and SOPs at all service delivery points
- Support availability of data collection tools for Integrated Health Services
- Support availability of quality assurance tools for integrated health services
- Strengthen community structures with mechanisms for meaningful community engagement
- Support strengthening of GoT Systems
- Support functioning Multi-Sectoral AIDS Committees
- Strengthen Community-Led Monitoring

# Cross Cutting Element: Gender & Women Empowerment - Youth Inclusion

## Gender and Women Empowerment

The Program will support interventions around gender and women empowerment to:

- Implement interventions that include the identification and correction of gender-based inequities in HIV&TB and FP service delivery.
- Address the underlying reasons for gender-based differences and apply gender transformative or gender-sensitive approaches when designing, implementing, monitoring, and evaluating their work.
- Engage a range of female and male stakeholders at all levels through participatory approaches to ensure that the delivery of quality HIV/TB/FP services are gender-responsive.
- Address barriers and identify opportunities to support women's and men's uptake of health services.
- Identify and address barriers to women's and men's participation in HIV and TB and FP services

## Youth Inclusion

The Program is expected to reach youth by:

- Ensuring their health needs are met, particularly as it relates to HIV&TB and Family Planning;
- Preventing and responding to violence, exploitation, abuse, and neglect and ensuring young people are safe and receive care;
- Building youth competencies and skills to stay healthy in order to become informed and productive citizens; and
- Creating channels for dialogue and participation that enable young people to contribute to their own and their communities' development, including the success of this activity.

**Note:** The program prioritizes adolescent girls and young women as a target population to ensure they have access to and use quality HIV&TB and FP services at health facilities.

# Cross Cutting Element: Sustainability & Self-Reliance - Program Integration

## Sustainability & Self-Reliance

The Program will facilitate sustainability and self-reliance of program interventions by:

- Engaging R/CHMTs in developing a sustainability plans.
- Focusing on joint CCHP work planning, implementation, monitoring and evaluation.
- Partnering with CBO/CSO/FBO's for capacity development
- Engaging communities by actively involving beneficiaries in the work planning process and entering into sub-grants with CSOs.
- Providing TA and financial support to LGAs to strengthen the preparatory work for multi-sectoral stakeholder forums, with a focus on resource mobilization that will empower LGA's to advocate and ring-fence own-source revenues for HIV/TB.

## Program Integration

The Program will work closely with other USAID and USG implementing partners. These includes but not limited to:

- USAID Afya Yangu – RMNCAH
- PMI Impact Malaria Field Support
- National-level Social Behavior Change Activity(TBD)
- TB/FP Integrated Response Program
- Public Sector Systems Strengthening Plus: Abt Associates PS3+
- Global Health Supply Chain-Technical Assistance
- USAID Afya Endelevu
- Community Systems Strengthening Program
- USAID Lishe Endelevu
- USAID Kizazi Hodari



This Program is made possible with the support of the U.S. President's Emergency Plan for AIDS Relief (PEPFAR), through the United States Agency for International Development (USAID).

The views expressed and opinions contained in this presentation are those of the USAID Afya Yangu - Southern Program team and are not intended as statements of policy of either the U.S. President's Emergency Plan for AIDS Relief (PEPFAR), the United States Agency for International Development (USAID) or the cooperating organizations.

As such, the contents of this presentation are the sole responsibility of the USAID Afya Yangu - Southern Program team and do not necessarily reflect the views of the U.S. President's Emergency Plan for AIDS Relief (PEPFAR), United States Agency for International Development (USAID) or the United States Government.

© 2022 USAID Afya Yangu - Southern Program