

Deloitte.



TaxMax – The 51st series
Building economic resilience
through strategic tax reforms

Thursday, 13 November 2025

8.30 a.m. - 5.45 p.m.

One World Hotel,

Bandar Utama City Centre, Petaling Jaya.

An event by Deloitte Tax Academy

Overview

Deloitte's 51st TaxMax, themed to "Building economic resilience through strategic tax reforms" will see subject-matter experts providing commentary on Budget 2026, focusing on how Malaysia will craft a high-value economy while managing inherent challenges. Expect in-depth analyses and commentary on the latest tax developments, emerging compliance challenges, and critical upcoming reforms, providing organisations with the strategic insights needed to navigate the evolving landscape of digital and fiscal transformation.

Highlights



2026 National Budget highlights



Towards shared prosperity:
Equity in Malaysia's economic course



Navigating indirect tax changes in Malaysia:
Expectations and future direction



Self-assessment for stamp duty – Are you ready?



Under the lens:
Recent tax cases



In the recent International Tax Review Asia-Pacific Awards 2024, Deloitte Malaysia has been recognised in the following categories:

- Tax Advisory Firm of the Year
- Transfer Pricing Advisory Firm of the Year
- Indirect Tax Advisory Firm of the Year
- Tax Disputes Advisory Firm of the Year

Who should attend



CEOs



CFOs



Finance, Tax and Legal professionals

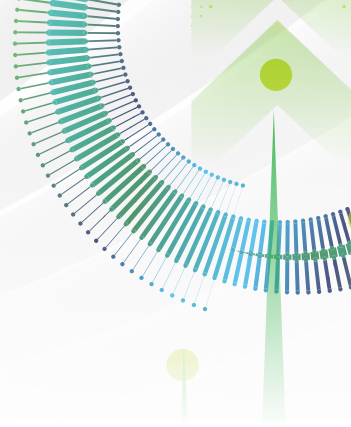


and any discerning individuals who wish to gain insights into the Budget and guidance through the modernisation of the tax system

Agenda

Time	Event	Speaker(s)
8.15 a.m. – 8.45 a.m.	Registration	
8.45 a.m. – 9.00 a.m.	Welcome speech	
9.00 a.m. – 10.30 a.m.	Towards shared prosperity: Equity in Malaysia's economic course	Moderator: Sim Kwang Gek Panelists: <ul style="list-style-type: none"> • Yee Wing Peng • Datuk Johan Mahmood Merican • Datuk Sikh Shamsul Ibrahim Sikh Abdul Majid • Lee Heng Guie
10.30 a.m. – 10.45 a.m.	Break	
10.45 a.m. – 1.00 p.m.	Budget 2026 highlights: <ul style="list-style-type: none"> • Personal income tax • Corporate & other taxes, incentives • Customs & indirect taxes 	<ul style="list-style-type: none"> • Chee Ying Cheng & Janice Lim Yee Phing • Thin Siew Chi & Kelvin Yee Rung Hua • Larry James Sta Maria & Nicholas Lee Pak Wei
1.00 p.m. – 2.00 p.m.	Lunch break	
2.00 p.m. – 3.00 p.m.	Navigating indirect tax changes in Malaysia: Expectations and future direction	Moderator: Tan Eng Yew Panelist: <ul style="list-style-type: none"> • Tuan Zulkifli bin Abdul Karim
3.00 p.m. – 4.00 p.m.	Under the lens: Recent tax cases	Moderator: Toh Hong Peir Panelist: <ul style="list-style-type: none"> • Vijey R. Mohana Krishnan
4.00 p.m. – 4.30 p.m.	Break	
4.30 p.m. – 5.45 p.m.	Self-assessment for stamp duty – Are you ready?	Moderator: Tan Hooi Beng Panelists: <ul style="list-style-type: none"> • Vijey R. Mohana Krishnan • Shafudin Yacob • Manvinder Singh A/L Ajeet Singh
	End of seminar	

Registration



When and where



Thursday,
13 November 2025



8.30 a.m. to 5.45 p.m.



View
Map

One World Hotel,
Bandar Utama City
Centre, Petaling Jaya

[CLICK HERE
TO REGISTER](#)



Seminar fee

RM1,200
per delegate

HRDC claimable

RM1,150
each for group bookings
of 3 or more
delegates

HRDC claimable

*The above seminar fee is inclusive of 8% service tax

Registration details

Closing date: 30 October 2025

(or earlier if full capacity is reached)

- Seat(s) are confirmed upon receipt of full payment / HRDC grant approval ID before the closing date.
- **No refund or cancellation upon registration**
- No extra charge for substitute delegates. Please inform us of your replacement before the closing date.

For registration enquiries, please contact:



Noorashikin Hamzah | +603 7610 8135
Nurul Annis Ab Aziz | +603 7610 7770



mytaxmax@deloitte.com

Payment details

Company name: Deloitte Malaysia Tax Services Sdn Bhd
Bank name: Standard Chartered Bank Malaysia Berhad
Bank address: Imazium – Damansara Uptown Branch
Unit G-01, Ground Floor, Imazium, Jalan SS 21/37,
Damansara Uptown,
47400 Petaling Jaya, Selangor
Swift code: SCBLYKXXXX
Account: 620-194-720-320

Please submit your remittance slip to mytaxmax@deloitte.com and ensure that participant's name(s) is stated in the remittance slip.

An e-certificate will be issued upon full attendance and full payment after the completion of the seminar. CPE hours (i.e. 7 hours) are claimable through participants' own applications to the awarding bodies.

HRD Corp Claimable

- Companies that contribute to the Human Resources Development Fund are eligible for HRD Corp Claimable Courses (HCC) training grants.
- Please ensure the HRDC grant approval is obtained prior to event registration and provided during the registration process.
- In the event of unsuccessful HRDC claim, invoice will be issued to participant for payment.
- For more information on HRDC claim, please refer to the [FAQ](#).

Details of your registration and participation in this event will be collected by Deloitte in accordance with our Privacy Policy, located at <http://www.deloitte.com/my>

Disclaimer: The organiser reserves the right to cancel and/or make changes to the programme, venue, speaker(s)/ facilitator(s) and/or topic(s) if warranted by circumstances beyond its control. A minimum of 3 days' notice will be given.

Guest speakers



Datuk Johan Mahmood Merican

Secretary General of Treasury, Ministry of Finance

Datuk Johan is a qualified Chartered Accountant (ICAEW) with an Economics Degree from the University of Cambridge. Prior to his roles in government, he worked for 9 years in corporate finance and accounting roles in the private sector. Since 2004, Datuk Johan has served in various roles including Deputy Secretary General (Policy) and National Budget Director at the Ministry of Finance, Deputy Director General (Human Capital) of the Economic Planning Unit and CEO of Talent Corporation Malaysia. He currently serves as the Secretary General of the Ministry of Finance.



Datuk Sikh Shamsul Ibrahim Sikh Abdul Majid

Chief Executive Officer of Malaysian Investment Development Authority (MIDA)

Datuk Sikh Shamsul was appointed as Chief Executive Officer of MIDA, effective 18 April 2024. Having joined the agency in 1996, he has since dedicated over two decades to shaping and advocating the national industrial policies and strengthening Malaysia's position as a premier investment hub. Over the years, he has ascended through a series of pivotal roles, including Executive Director for Manufacturing Development and Investment Promotion, and Senior Executive Director of Investment Policy Advocacy.

In his most recent capacity, Datuk Sikh Shamsul spearheaded initiatives that substantially increased both domestic and foreign investments, showcasing his sharp insight into economic trends and strategic policy formulation. Under his leadership, MIDA is well-positioned on the global stage, ready to attract quality and sustainable investments that will further elevate Malaysia's standing.



Lee Heng Guie

Executive Director of Socio-Economic Research Centre (SERC)

An economist with 30 years of professional experience, Mr. Lee has worked in Bank Negara Malaysia for almost 13 years, and has been in the financial services industry for 19 years. He is an independent member of the Investment Committee of Opus Asset Management Sdn Bhd, an Independent Board Director of Bank of China (Malaysia) and a member of the Economic Committee of the Malaysia Competition Commission (MyCC).



Manvinder Singh A/L Ajeet Singh

Group Tax Controller, FGV Holdings Group of Companies

Manvinder's current role entails the provision of comprehensive tax compliance and advisory for the FGV Holdings Group, including GST and Transfer Pricing. He is also involved in providing tax advisory on numerous corporate restructurings for the Group.

Prior to this, Manvinder was attached to Big 4 firms and held extensive experience in local and cross-border investments advisory. Manvinder is a council member of the Chartered Tax Institute of Malaysia.

Guest speakers



Shafudin Yacob

Director, RPGT & STAMP Operation Department, Inland Revenue Board Malaysia

Shafudin Yacob has more than 20 years of experience in tax practice specifically in tax collection matters, employer, corporate and personal tax audit. Previously, he was attached to the IRBM's Large Taxpayer Branch (CPCB) as a Director of Special Section and oversees the audit of cases involving tax planning for various industries such as Investment Holding Company (IHC), air transport, manufacturing and IT services. Then, he promoted and transferred to IRBM's Johor as a State Operation Director of Company & Non-company Tax Audit. He has been promoted to IRBM's Wilayah Persekutuan Putrajaya as a State Director starting 1st October 2023. He was also appointed as a Director of Intelligence & Profiling Department. Currently, he has been appointed as a Director of Stamp And RPGT Operation Department.



Vijey R. Mohana Krishnan

Partner, Tax & Revenue, Raja, Darryl & Loh

Vijey has more than 25 years of experience in tax matters. He joined Raja, Darryl & Loh in 1999 and heads the revenue law practice group there. The team is active in all areas of tax law including income tax, petroleum income tax, real property gains tax, stamp duty, GST, sales & service tax, customs duties and stamp duties. Vijey regularly appears before the Special Commissioners of Income Tax, the Customs Appeal Tribunal, the High Court and the Court of Appeal on major points of tax law.

Vijey has consistently been recommended in the area of Tax in publications such as The Asia Pacific Legal 500, the Tax Directors Handbook and Chambers Asia Pacific. He is listed as a Leading Individual in the area of Tax in Chambers Asia Pacific and as a Leading Lawyer in Asialaw Profiles. He has also been listed as a Litigation Star in Benchmark Litigation and in 2019-2022, the Asia Business Law Journal lists Vijey as one of the top 100 lawyers practising in Malaysia.

Vijey is an Associate of the Chartered Tax Institute of Malaysia and has been involved in various committees including the GST and Tax Sub-Committee of the Malaysian Bar, the Tax Committee of the American Malaysia Chamber of Commerce and the Chartered Tax Institute of Malaysia Technical Committee – Indirect Taxation and Stamp Duty.



Tuan Zulkifli bin Abdul Karim

Deputy Director of Customs Technical Management Branch, Internal Tax Division, Headquarters Royal Malaysian Customs Department

A dedicated Customs officer with over 31 years of service in various strategic divisions of the Royal Malaysian Customs Department (RMCD). Experienced in compliance management, enforcement, intelligence, technical services, and taxation. Recognised for outstanding contributions in enforcement, internal tax, and policy development, particularly in the expansion of the Sales and Services Tax (SST).

Deloitte speakers >



Yee Wing Peng

Country Managing Partner

Wing Peng is the Country Managing Partner of Deloitte Malaysia. He has more than 3 decades of experience in professional services providing local and multinational companies, across various industries, with a comprehensive range of audit, tax, investment and business advisory services. A member of the Deloitte Southeast Asia (SEA) Executive Committee, he was also previously the Malaysia Country Tax Leader and led the SEA Chinese Services Group. In addition, Wing Peng also held the role as an industry advisor for the Bachelor of Management (Accounting) programme and the MBA programme at Xiamen University Malaysia. He has also been an honorary advisor to Master Builders Association Malaysia for more than a decade.



Sim Kwang Gek

Country Tax Leader

Kwang Gek is the Malaysia Tax Leader and Malaysia M&A tax practice leader. She has over 25 years of experience in tax with extensive experience in advising local and multinational companies on inbound and outbound investments, restructuring of operations, mergers and acquisitions, incentive evaluation and applications, regulatory applications to various government agencies, establishment of businesses in Malaysia as well as managing the tax compliance affairs of a portfolio of clients. Kwang Gek has been recognised as one of the leading tax advisers by the International Tax Review in current edition of “The World’s Leading Tax Advisers” and Women in Tax Leaders Guide.



Tan Hooi Beng

Deputy Tax Leader

Hooi Beng leads the International Tax service line and has more than 21 years of experience in corporate and international tax. He has vast experience in advising multinational corporations on corporate structuring and restructuring, mergers and acquisitions, international offshore financial centres, business model optimisation, tax treaties and cross-border taxation generally. An avid writer and speaker, he regularly contributes thought leadership content in print media and takes part in speaking engagements. Hooi Beng has been listed in the current edition of “The World’s Leading Tax Advisers” (Euromoney).



Tan Eng Yew

Indirect Tax Leader

Eng Yew leads the Indirect Tax service line. He has over 24 years of experience in the areas of customs, excise, sales, service tax, and GST. He currently advises clients on various indirect tax matters, including impact on proposed transactions, indirect tax reviews and due diligence and client representation with the relevant tax authorities. He has also represented clients in various disputes before the customs authorities and before the Customs Appeal Tribunal.

Deloitte speakers >



Toh Hong Peir

Energy, Resources and Industrials Tax Leader

Hong Peir is the Energy, Resources and Industrials Tax Leader. He has over 21 years of experience in professional practice, commercial group, and upstream oil and gas industry. Prior to joining Deloitte, Hong Peir was a tax planning specialist in a US based independent energy company. He was also the Head of Tax of a Malaysian conglomerate, covering banking & financial services, manufacturing, property development & investment industries and a Senior Business Planner of an Oil & Gas super major. His corporate experience has enabled him to translate technical professional advice into practical business solutions.



Chee Ying Cheng

Global Employer Services Partner

Ying Cheng has over 21 years of cumulative experience gained from major accounting firms. Her primary roles are advising on mobility management, employment tax matters, immigration compliance and rewards planning includes shared based compensation schemes. She handles a varied portfolio comprising major multi-national corporations across most industries including international financial institutions, oil and gas, etc.



Kelvin Yee Rung Hua

International Tax Partner

Kelvin has more than 15 years of tax experience in providing tax advisory services for local and multi-national corporations in the manufacturing, services, real estate, oil and gas, financial institution, hotel, retail, telecommunication and information technology industry.

Kelvin has vast experience in due diligence exercise, group restructuring, stamp duty exemption application and tax incentive application. He also has experience in advising clients on general tax issues, cross-border transactions, Labuan tax matters, stamp duty issues and real property gains tax matters. He has advised various clients on OECD Base Erosion and Profit Shifting-related projects including assignments related to GMT.

Kelvin is a fellow member of the Association of Chartered Certified Accountants, a member of the Chartered Tax Institute of Malaysia and a Chartered Accountant of the Malaysian Institute of Accountants.



Thin Siew Chi

Business Tax Partner

Siew Chi has more than 19 years of experience in both corporate tax compliance and tax advisory work across a wide range of industries such as trading, manufacturing, telecommunications, technology, plantations, property, retail, and other services sectors. Her tax advisory experience covers various financial and business transactions, tax incentives, international tax planning on cross border transactions (inbound and outbound investments), structuring of mergers and acquisitions, group restructuring exercises, tax review, and tax due diligence work.

Deloitte speakers >



Janice Lim Yee Phing

Global Employer Services Director

Janice brings over 16 years of experience in personal tax compliance and immigration services, with a strong focus on international mobility programs across diverse industries including manufacturing, technology, and professional services.

She has extensive experience working with multinational and local companies on individual income tax matters and oversees global coordination of personal tax and immigration requirements for multinational corporations with offices worldwide. Janice also has extensive experience supporting clients on mobility management strategies, helping them navigate complex cross-border compliance and workforce challenges.



Larry James Sta Maria

Indirect Tax Director

Larry is Director in the Indirect Tax team in Malaysia. He has more than 20 years experience in Customs and indirect tax, in both the tax consulting and corporate sectors, covering Customs and trade, SST and GST. Prior to joining Deloitte, he held the position of Vice President in the Tax Function of a Malaysian Government-linked multinational company, involved in healthcare, industrial, property and other industries.

Advised and supported Clients from a diverse background of industries, assisting them on matters covering indirect tax planning and structuring, advisory and compliance, Customs and global trade issues. A large number of these Clients are in the financial services, information technology services and consumer businesses industries.

Currently involved in leading projects advising clients on the service tax expansions, focusing on the financial services industry and construction and property industries, on the impact and implementation of the expansion of service tax to financial services.

He has been actively involved in dealing with the RMCD and industry associations on GST and SST related matters and has served in professional and industry association committees dealing with Customs on indirect tax-related matters, including making representations to the authorities in Malaysia including the MoF and the Director General of the RMCD on indirect tax matters including appeal and exemption matters relating to SST and broader matters relating to the development of the indirect tax legislation in Malaysia.



Nicholas Lee Pak Wei

Indirect Tax Director

Currently involved in both indirect tax and Customs matters. Experience encompasses provision of advices on sales tax and service tax ("SST") implications of business arrangements and transactions and engaging in SST implementation projects.

Actively engaged in SST and Customs related assignments involving valuation matters, exemptions, compliance, classification, Free Trade Agreements, import facilities i.e. AEO, free zones, etc., ruling applications and due-diligence. Prior to GST, he has assisted clients with respect the old SST regime which covers advisory, classification, return preparation, rulings and exemption applications.

Involved in assisting businesses with their VAT implementation in the Kingdom of Saudi Arabia and GST implementation in Malaysia. Engaged in several e-invoice implementation projects for the Malaysian jurisdiction. Actively contributing to the Chartered Tax Institute of Malaysia on Customs-related policy issues.



Deloitte refers to one or more of Deloitte Touche Tohmatsu Limited (“DTTL”), its global network of member firms, and their related entities (collectively, the “Deloitte organization”). DTTL (also referred to as “Deloitte Global”) and each of its member firms and related entities are legally separate and independent entities, which cannot obligate or bind each other in respect of third parties. DTTL and each DTTL member firm and related entity is liable only for its own acts and omissions, and not those of each other. DTTL does not provide services to clients. Please see www.deloitte.com/about to learn more.

Deloitte Asia Pacific Limited is a company limited by guarantee and a member firm of DTTL. Members of Deloitte Asia Pacific Limited and their related entities, each of which is a separate and independent legal entity, provide services from more than 100 cities across the region, including Auckland, Bangkok, Beijing, Bengaluru, Hanoi, Hong Kong, Jakarta, Kuala Lumpur, Manila, Melbourne, Mumbai, New Delhi, Osaka, Seoul, Shanghai, Singapore, Sydney, Taipei and Tokyo.

About Deloitte Malaysia

In Malaysia, services are provided by Deloitte Malaysia Tax Services Sdn Bhd and its affiliates.

This communication contains general information only, and none of Deloitte Touche Tohmatsu Limited (“DTTL”), its global network of member firms or their related entities (collectively, the “Deloitte organization”) is, by means of this communication, rendering professional advice or services. Before making any decision or taking any action that may affect your finances or your business, you should consult a qualified professional adviser.

No representations, warranties or undertakings (express or implied) are given as to the accuracy or completeness of the information in this communication, and none of DTTL, its member firms, related entities, employees or agents shall be liable or responsible for any loss or damage whatsoever arising directly or indirectly in connection with any person relying on this communication. DTTL and each of its member firms, and their related entities, are legally separate and independent entities.