



## TAX Alert

### 7% VAT Rate Extension

On 17 September 2024, the Cabinet approved the extension of the reduced Thailand's statutory VAT rate from 10% to 7% (inclusive of local tax) for another one year. The extension is effective from 1 October 2024 until 30 September 2025. Please note that the supplementary law will be announced soon.

#### Contacts

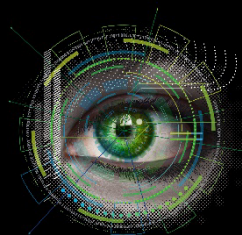
Nu To Van, Partner, Tax & Legal Services  
Tel: +66 (0) 2034 0163  
Email: [ntovan@deloitte.com](mailto:ntovan@deloitte.com)

Sukanok Suthinan, Director, Indirect Tax  
Tel: +66 (0) 2034 0000 ext. 13323  
Email: [ssuthinan@deloitte.com](mailto:ssuthinan@deloitte.com)



#### Dbriefs

A series of live, on-demand and interactive webcasts focusing on



#### Power of With

Focus on the power humans have with machines.



#### Tax@hand

Latest global and regional tax news,

topical tax issues for  
business executives.

information, and  
resources.

Get in touch



**Deloitte Thailand | Add as safe sender**

Deloitte refers to one or more of Deloitte Touche Tohmatsu Limited (“DTTL”), its global network of member firms, and their related entities (collectively, the “Deloitte organization”). DTTL (also referred to as “Deloitte Global”) and each of its member firms and related entities are legally separate and independent entities, which cannot obligate or bind each other in respect of third parties. DTTL and each DTTL member firm and related entity is liable only for its own acts and omissions, and not those of each other. DTTL does not provide services to clients. Please see [www.deloitte.com/about](http://www.deloitte.com/about) to learn more.

Deloitte Asia Pacific Limited is a company limited by guarantee and a member firm of DTTL. Members of Deloitte Asia Pacific Limited and their related entities, each of which is a separate and independent legal entity, provide services from more than 100 cities across the region, including Auckland, Bangkok, Beijing, Bengaluru, Hanoi, Hong Kong, Jakarta, Kuala Lumpur, Manila, Melbourne, Mumbai, New Delhi, Osaka, Seoul, Shanghai, Singapore, Sydney, Taipei and Tokyo.

**About Deloitte Thailand**

In Thailand, services are provided by Deloitte Touche Tohmatsu Jaiyos Co., Ltd. and its subsidiaries and affiliates.

This communication contains general information only, and none of DTTL, its global network of member firms or their related entities is, by means of this communication, rendering professional advice or services. Before making any decision or taking any action that may affect your finances or your business, you should consult a qualified professional adviser.

No representations, warranties or undertakings (express or implied) are given as to the accuracy or completeness of the information in this communication, and none of DTTL, its member firms, related entities, employees or agents shall be liable or responsible for any loss or damage whatsoever arising directly or indirectly in connection with any person relying on this communication.

© 2024 Deloitte Touche Tohmatsu Jaiyos Advisory Co., Ltd.