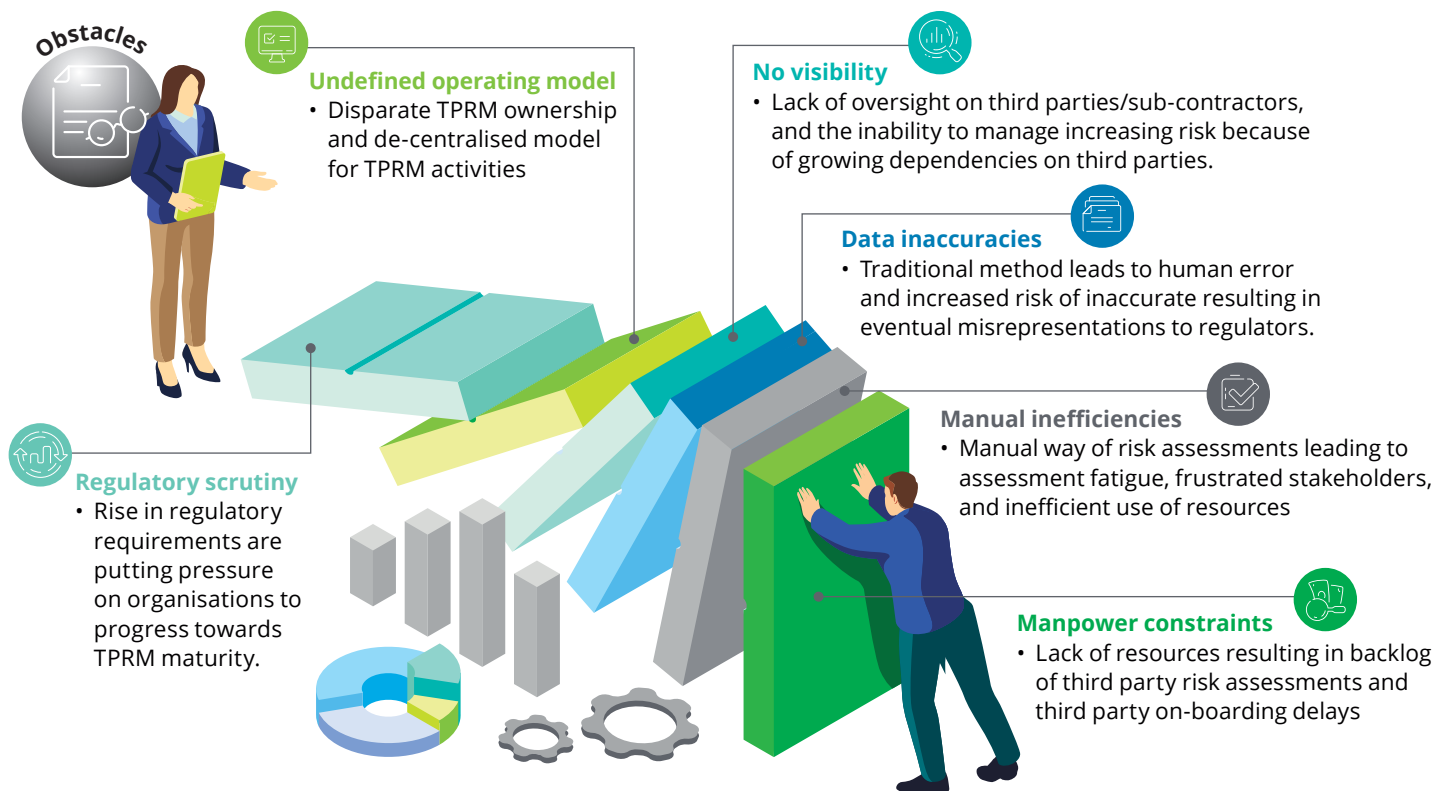


## Third Party Risk Management ("TPRM")

Assure.  
Advise.  
Anticipate.  
Accelerate.



As expectations around protecting public interest are increasing, businesses must be ready to respond to current and future challenges. Third parties are no longer just managing ancillary activities, but driving critical activities in core parts of the business of an organisation – extending the walls of the enterprise and beyond third parties. Assurance is the insight we provide and the trust our work inspires.



# How can we help you

## Services & capabilities



### TPRM advisory

- Development and implementation of TPRM framework. Including design and build of tiering methodologies, inherent risk, risk assessment questionnaires, and policies/procedures.
- Assess the maturity of TPRM processes.
- Gap analysis against regulatory requirements.



### Technology enablement (powered by AI)

- TPRM solution implementation, including integration of risk sensing platforms.
- Elevating TPRM with risk intelligence tools powered by AI.



### Managed services

- Perform on-demand risk assessments.
- Support the identification and remediation of risks posed by third parties.

## Expected outcomes



Compliance with regulatory requirements and up keep with emerging trends.



Increased efficiencies with streamlined TPRM processes.



Tap into leading practices by accessing our TPRM experience and expertise.



Leverage tools and technologies for faster ramp up.



Strengthened oversight and monitoring of third parties and related risks.



# Why Deloitte?

We understand that your business is unique – and so is our approach. Our support goes beyond compliance to deliver customised, practical, and industry-aligned solutions that reflect the complexity of your operations and strategic outcomes you aim to achieve.

Our service offering is distinguished by the following core strengths:



### Actionable insights

Our observations and insights translate into clear, implementable recommendations that drive improvement.



### Commitment to quality

We uphold the highest compliance standards, objectivity, and integrity. We have taken steps to mitigate risk to our independence by among others, identifying threats to independence and establishing appropriate safeguards.



### Industry experience

We bring deep expertise across multiple sectors — tailoring our support to your specific context.



### Collaborative mindset

We work closely with your teams to align our assessments with your strategic goals and technical environment



### Proven track record

We've successfully supported clients across Southeast Asia in navigating complex changes and enhancing control frameworks.

## Contact us

### Singapore

#### Kenneth Leong

Partner  
+65 6216 3149  
keleong@deloitte.com

### Philippines

#### Lava III Jesus Ma.

Partner  
+63 2 8 857 1554  
jlavalll@deloitte.com

### Indonesia

#### Budyanto Budyanto

Partner  
+62 815 9303078  
budyanto@deloitte.com

### Thailand

#### Chinkavin Kittanatchai

Partner  
+66 2034 0184  
ckittanatchai@deloitte.com

### Malaysia

#### Ho Siew Kei

Partner  
+60 3 7610 8040  
sieho@deloitte.com

### Vietnam

#### Ivan Pham

Partner  
+84 28 710 55000  
ivanpham@deloitte.com

Deloitte refers to one or more of Deloitte Touche Tohmatsu Limited ("DTTL"), its global network of member firms, and their related entities (collectively, the "Deloitte organization"). DTTL (also referred to as "Deloitte Global") and each of its member firms and related entities are legally separate and independent entities, which cannot obligate or bind each other in respect of third parties. DTTL and each DTTL member firm and related entity is liable only for its own acts and omissions, and not those of each other. DTTL does not provide services to clients. Please see [www.deloitte.com/about](http://www.deloitte.com/about) to learn more.

Deloitte Asia Pacific Limited is a company limited by guarantee and a member firm of DTTL. Members of Deloitte Asia Pacific Limited and their related entities, each of which is a separate and independent legal entity, provide services from more than 100 cities across the region, including Auckland, Bangkok, Beijing, Bengaluru, Hanoi, Hong Kong, Jakarta, Kuala Lumpur, Manila, Melbourne, Mumbai, New Delhi, Osaka, Seoul, Shanghai, Singapore, Sydney, Taipei and Tokyo.

This communication contains general information only, and none of DTTL, its global network of member firms or their related entities is, by means of this communication, rendering professional advice or services. Before making any decision or taking any action that may affect your finances or your business, you should consult a qualified professional adviser.

No representations, warranties or undertakings (express or implied) are given as to the accuracy or completeness of the information in this communication, and none of DTTL, its member firms, related entities, employees or agents shall be liable or responsible for any loss or damage whatsoever arising directly or indirectly in connection with any person relying on this communication.