

Deloitte Southeast Asia Impact Report 2025

At a glance

Financial Year | June 2024 – May 2025

Societal impact



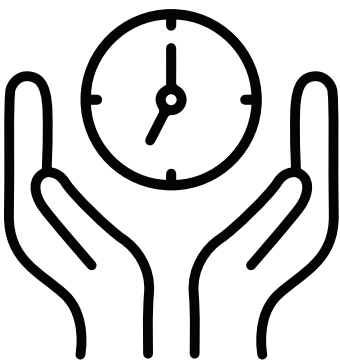
Total societal investments
USD2,539,154



WorldClass investments
USD1,704,788



Individuals impacted through WorldClass
749,063



WorldClass hours and pro bono time
8,547



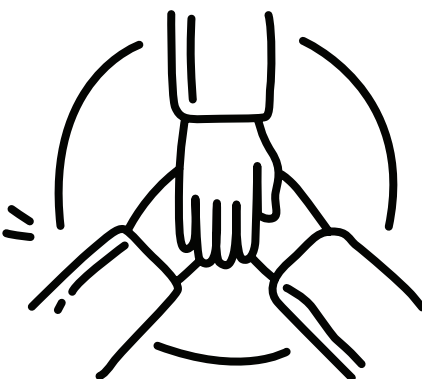
Hours of volunteering and pro bono work
15,996

Our people

Total new hires
3,300



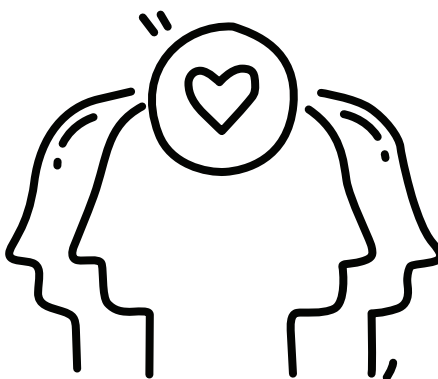
Total headcount
14,000



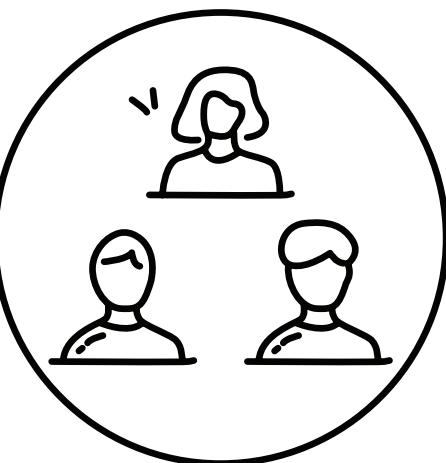
Total learning hours
804,755



Total learning investment
USD 6,129,040

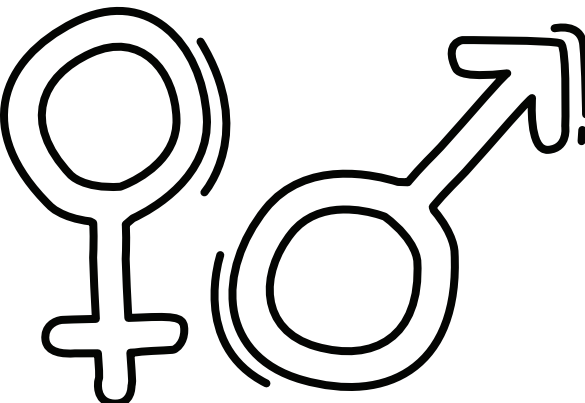


Headcount by age groups



<26	24.9%
26-30	30.9%
31-40	28.5%
>41	15.7%

Headcount by gender



Female	56.3%
Male	43.7%