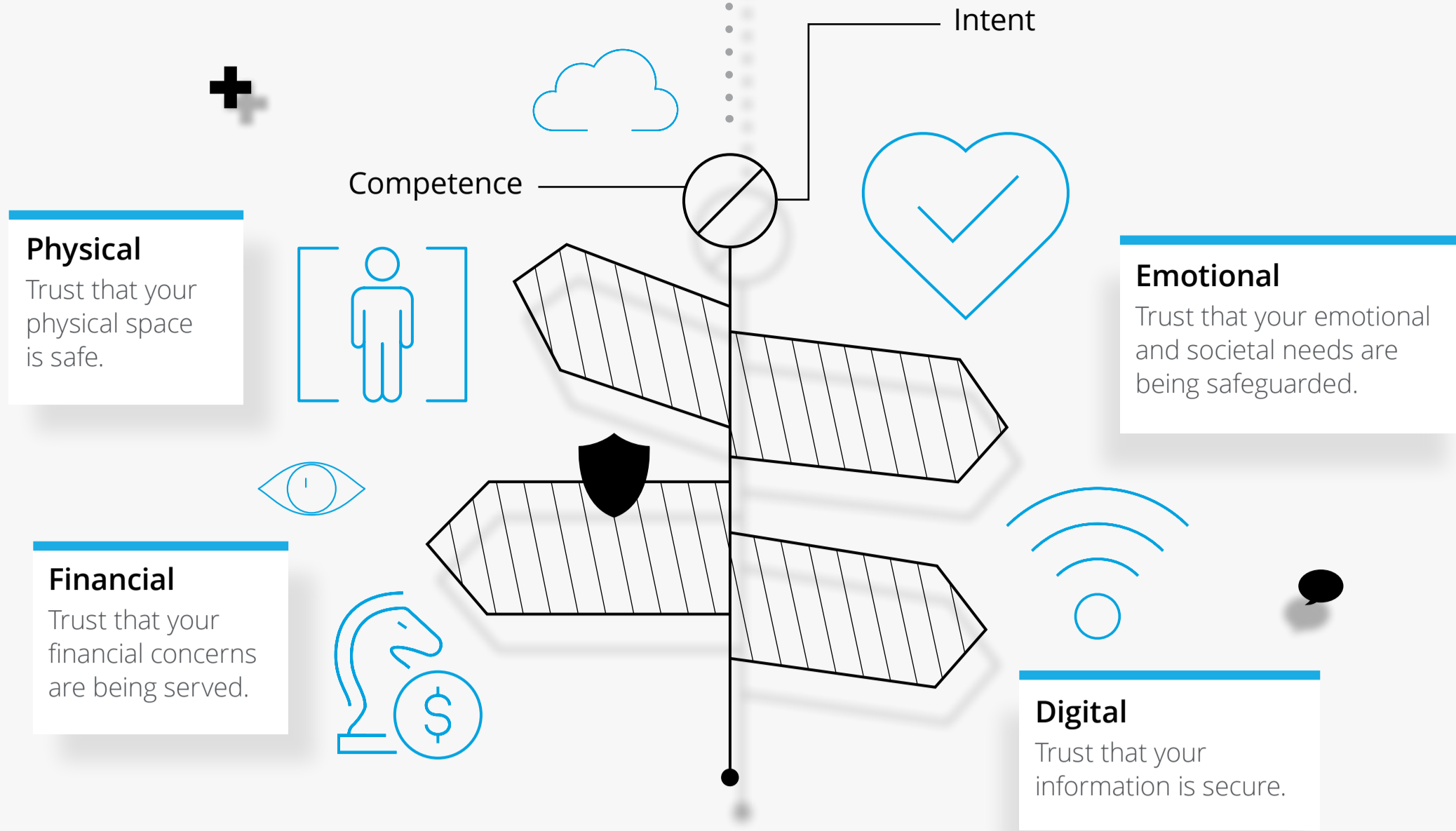
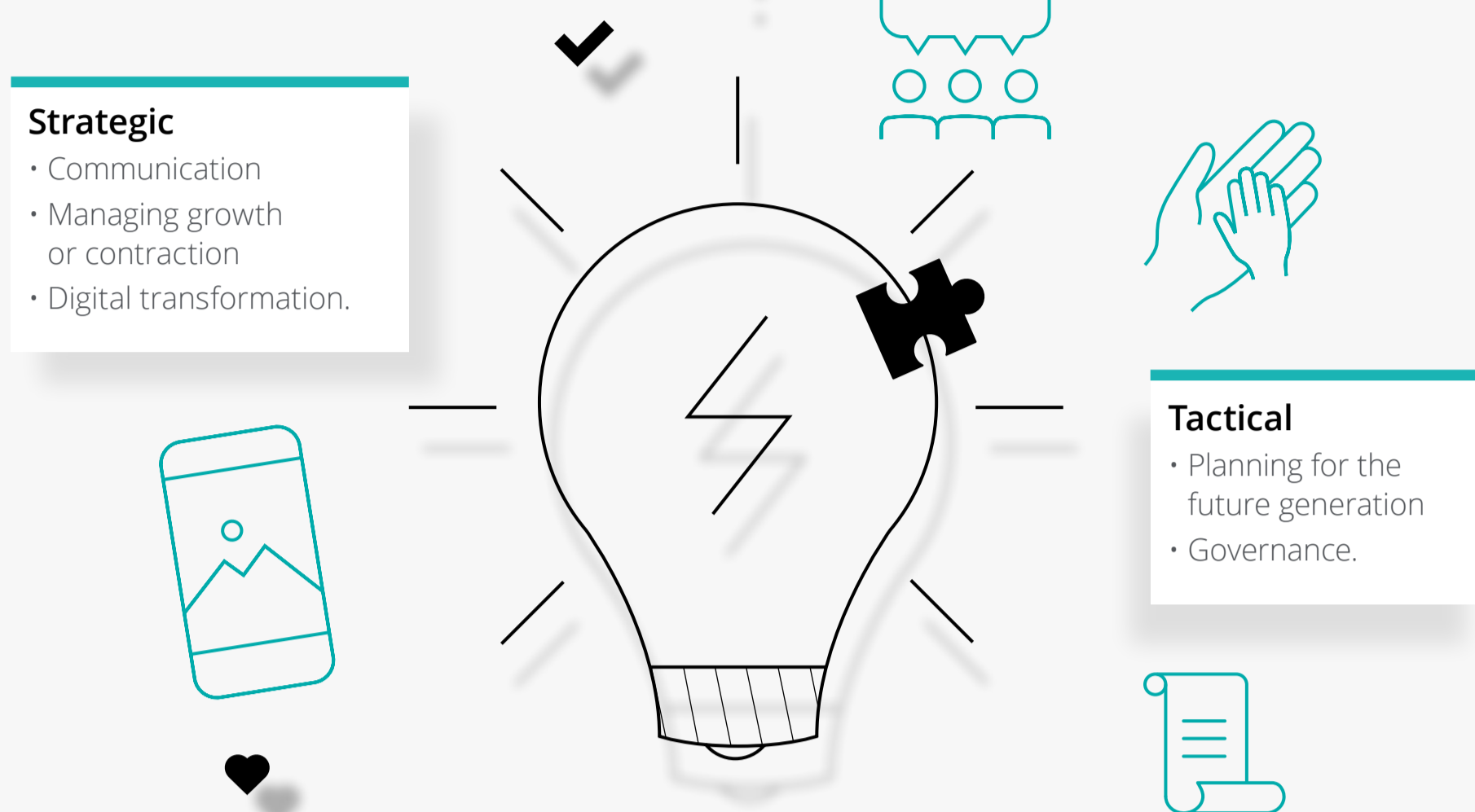


## Leading with trust as a family enterprise. How to thrive in a disrupted market.

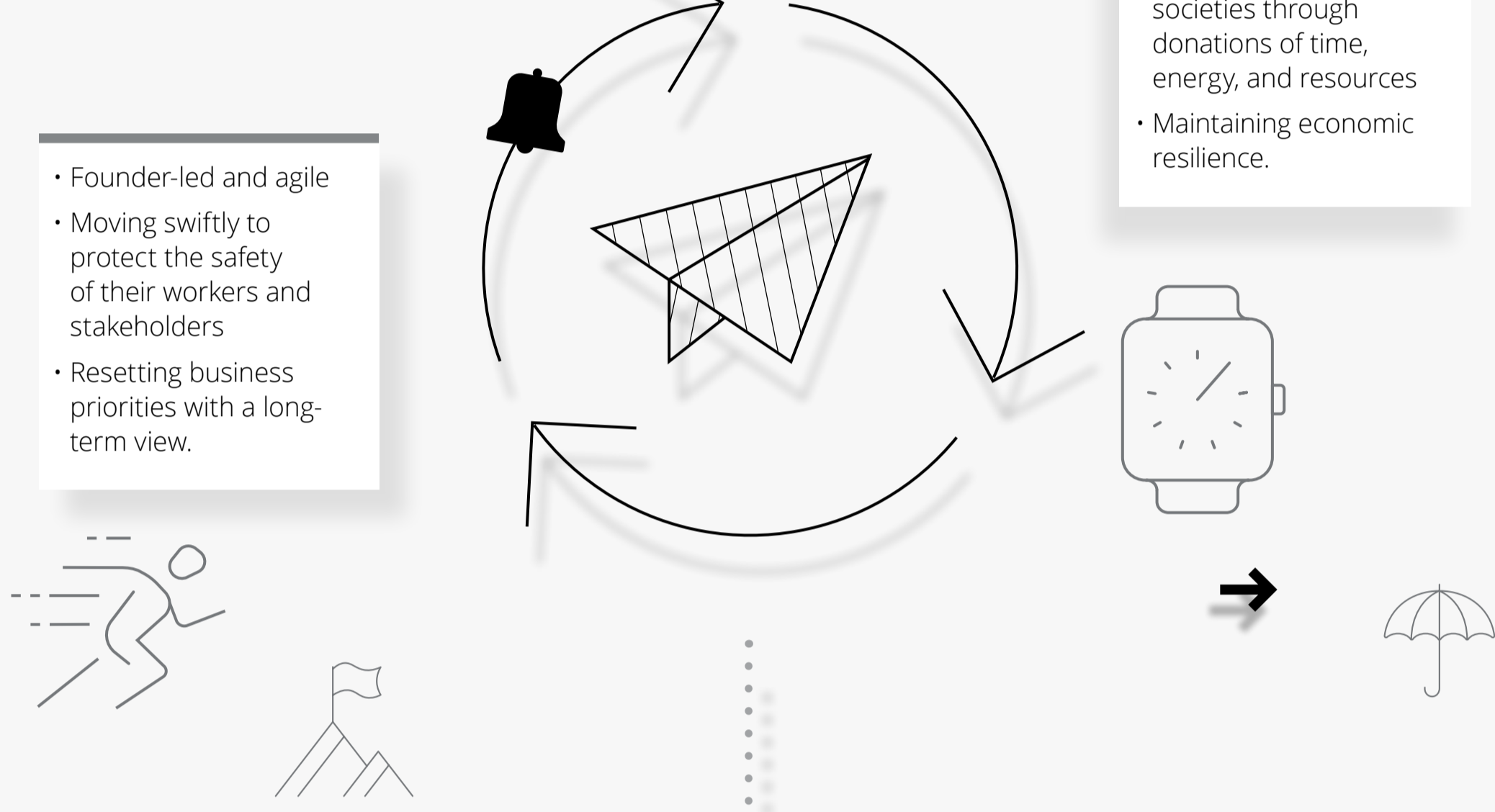
### Four dimensions of trust



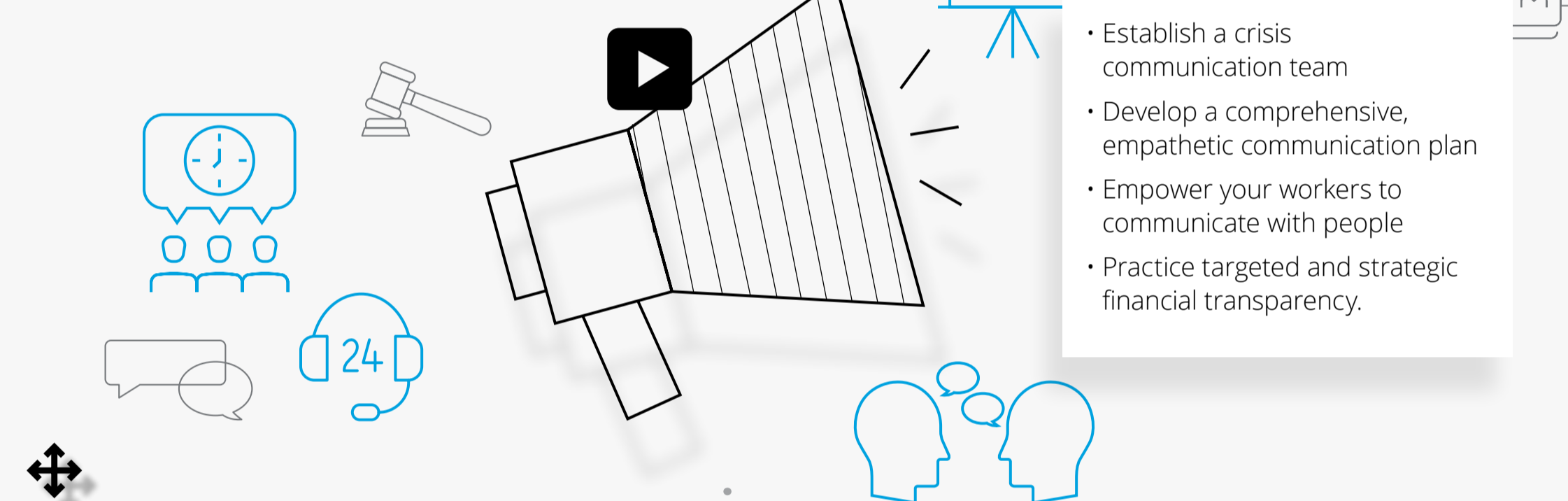
### Organizational priorities critical to private family enterprises



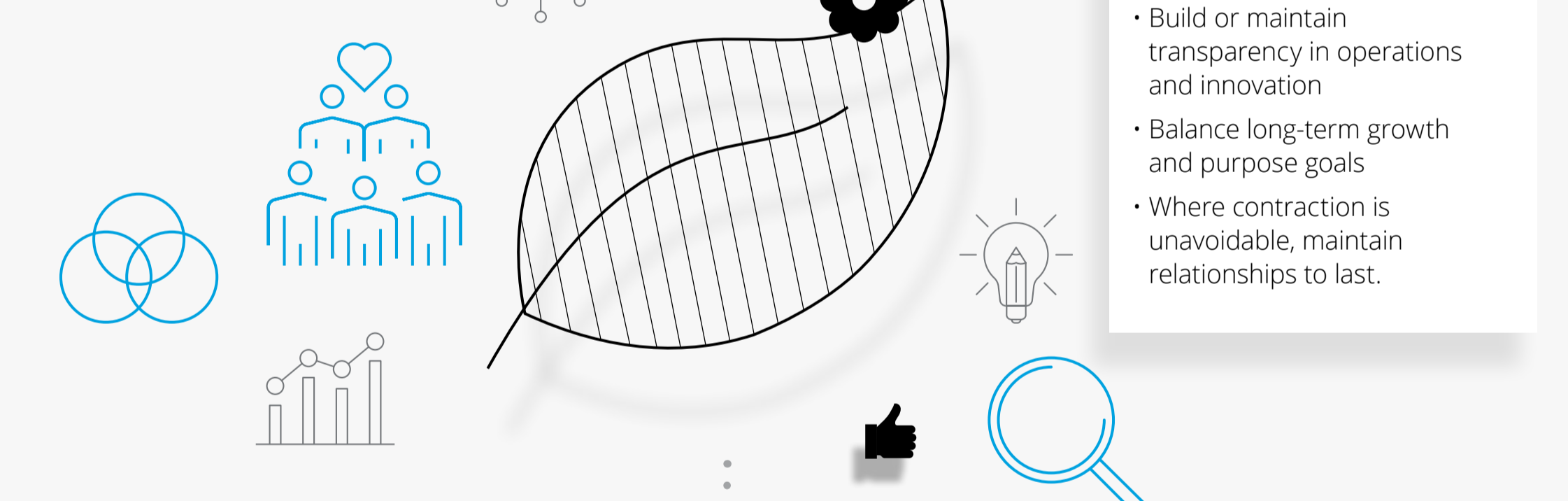
### The Asia Pacific family enterprise competitive advantage – recovering rapidly from disruption



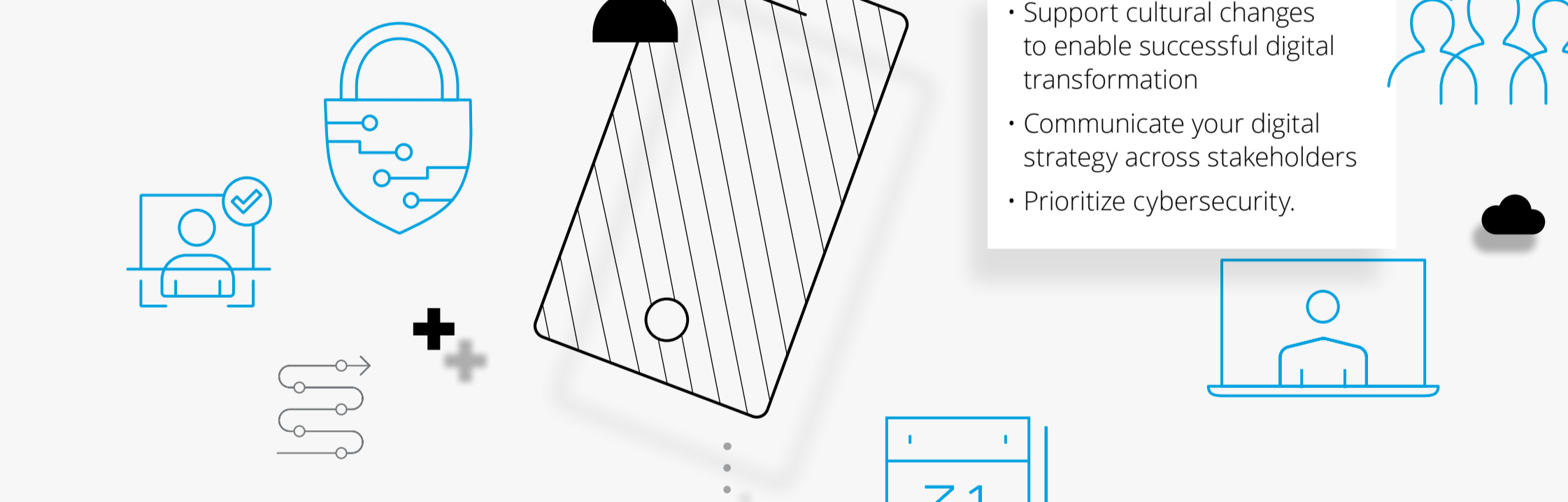
### Communicating with trust



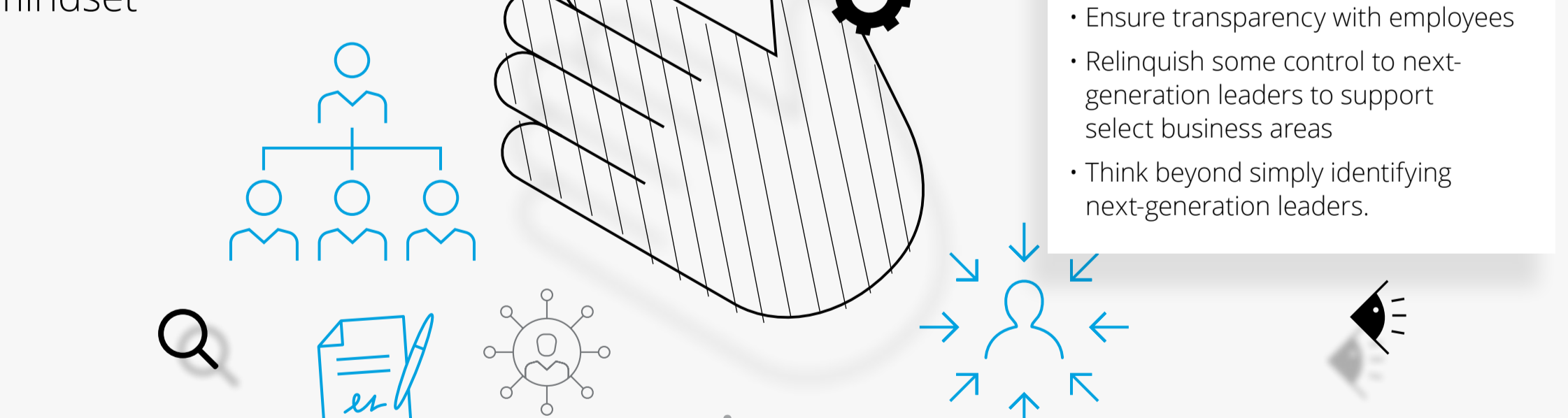
### Thrive and grow on a foundation of trust



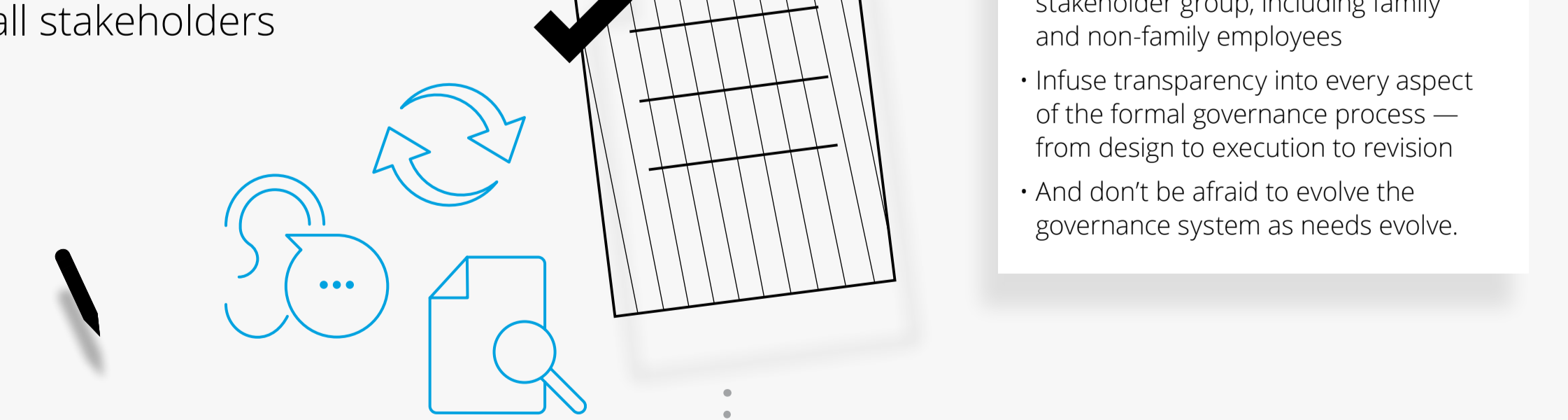
### Maintaining trust during digital transformation



### Planning succession with a multi-generational mindset



### Establishing a formal governance system that accounts for all stakeholders



### The road to thrive in a post-COVID-19 world

