

Deloitte 2025 National Tax Conference

Presenter Biographies



Hon Simon Watts

Revenue, Climate Change, Energy, and Local Government Minister

Simon Watts is the Revenue, Climate Change, Energy, and Local Government Minister. He has served as the MP for North Shore since 2020.

Simon gained a Bachelor of Management Studies, qualified as a Chartered Accountant, then later gained a Bachelor of Health Science (Paramedicine) at the Auckland University of Technology and is a registered paramedic. He has over twenty years of international banking and finance experience in the private and public sectors.



Bruce Wallace

Partner

I lead the Tax & Business Advisory team for Deloitte New Zealand and enjoy helping my clients solve complex tax problems and ensuring their international tax affairs are structured in an appropriate and efficient manner. In my view understanding the business strategy and longer-term objectives are key to developing a sustainable long-term structure. I have particular experience in international tax matters having worked in our U.S. firm and from assisting a number of New Zealand's largest outbound investors with their international affairs.



Robyn Walker

Partner

I am a Partner within the Tax Team at Deloitte in New Zealand. This involves many things, including preparing submissions on behalf of Deloitte and developing thought leadership in the area of tax. I like to think about how tax developments really impact on Deloitte's clients. I have a particular interest in tax policy and keeping up to date with all the many tax developments. I help Deloitte to advise the Corporate Taxpayers Group.



Patrick McCalman

Partner

I enjoy helping my clients understand how tax impacts on their business, and the options they have for ensuring that the tax outcomes align with their business needs and aspirations. It's about making my advice real in the context of what they are trying to achieve and helping them see both the opportunities and the risks that may arise and need to be managed. I work across a range of industries, drawing on my own client-side experience to ensure that I give pragmatic, valuable advice.



Troy Andrews

Partner

Troy is an Auckland-based Partner focusing on corporate tax, technology, outbound investment, infrastructure, and financial services. He enjoys bringing a different perspective when it comes to unbundling tax challenges, to ensure that tax becomes a clear part of the business value map. Troy's aim is to become part of a client's business – as a trusted advisor – to help them grow and find new ways to succeed.



Emma Grigg

Tax Policy Director, Inland Revenue

Emma is a Director in Policy at Inland Revenue. She has been with Inland Revenue for 30 years and prior to that worked in law and accounting firms as a tax advisor. Emma has degrees in law and in commerce and is a FCA.

Emma is responsible for the development of the Government's Tax Policy Work Programme and for Policy external engagement strategy. Emma has recently spent 18 months in the Minister of Finance's office as the Private Secretary-Revenue.



Josh Taylor

Co-founder, Tax Traders and Taxi

Josh is the co-founder of a growing group of tax technology companies including Tax Traders and Taxi. He is New Zealand's leading authority on tax pooling, especially its application to complex tax positions, and an expert on workflow automations for accountants. Earlier this year Josh led the team that secured a law change, obtaining imputation neutrality for Taxi, paving the way for widespread adoption of the product. Josh is committed to the accounting industry and committed to doing business differently. He believes strongly that business can be a force for good, evidenced by Tax Traders' accredited B Corp certification and the group's award-winning culture.



Tony Morris

Significant Enterprises Customer Segment Lead, Inland Revenue

Tony has had an extensive career with Inland Revenue working across the tax technical areas. His most recent role has been leading the Significant Enterprises Customer Segment. While leading our people in this Customer segment a highlight has included working with our people and customers to develop an increasingly co-operative approach to assisting and assuring the compliance of our largest customers.

He has also had experience working for Deloitte in a Senior Tax Manager role for 5 years. This role included the development and leadership of people within the tax teams and also provide tax advice to customers.

Tony lives in Hamilton and holds a Bachelor of Science, Bachelor of Management Studies and is a Fellow of CAANZ (Chartered Accountants of Australia and New Zealand).



Campbell Rose
Partner

I work alongside clients to execute transactions smoothly, secure valuable certainty through binding rulings, and resolve tax disputes - using my technical and strategic expertise. This involves helping clients to manage risk, so I draw from my significant legal experience and broad industry exposure to achieve this by providing pragmatic, commercial and outcome-oriented advice. I enjoy delivering lasting solutions for my clients' tax issues, so they can focus on what they're passionate about – running a successful business.



Amy Sexton
Associate Director

I am an Associate Director in Deloitte's National Tax team, focusing on tax policy, technical research, advisory, training, and education. My passion lies in shaping tax policy, where I actively contribute to Deloitte's submissions to both the Inland Revenue and the government. Additionally, I specialise in tax administration, audits/investigations, and tax controversy, drawing from my five years as a Specialist Investigator at Inland Revenue, where I worked within the Significant Enterprises sector. I also serve as editor of the Deloitte Tax Alert. Before transitioning to the tax field, I spent over 16 years in the insolvency sector, specialising in creditor-appointed liquidations and receiverships. I am a Chartered Accountant and hold a Master of Taxation Studies



Alex Kingston
Partner

I advise corporate clients on the full spectrum of tax matters, with a particular focus on the financial services, technology, and health/aged care sectors, all of which face unique and complex tax challenges. I try to simplify complex tax issues for my clients, so that tax risks can be understood and managed, and they can focus on what truly drives their success. My experience working within in-house corporate tax teams helps me to provide practical advice that can be easily understood and actioned.



Susan Wynne
Partner

I am a partner in the Hamilton tax team and work with a wide range of clients from large corporates to SME businesses. I help clients with all aspects of tax from managing their tax compliance obligations and assisting with tax accounting for financial reporting to tax advisory on business issues and transactions. With over 25 years of experience specialising in business tax, my aim is to support taxpayers in managing their tax obligations with ease.



David Watkins
**Tax Partner, Australia Tax Insights and Policy Group Leader, Deloitte Asia Pacific
Tax Policy Leader, Deloitte Australia**

David Watkins is the leader of the Deloitte Australia Tax Insights & Policy group. David has over 25 years' experience in corporate income tax and international tax covering a wide range of tax issues across various industry sectors. David has worked in Malaysia, Singapore and New York. In his current role, David's focus is on emerging tax developments and in particular, the Australian tax reform debate and the international process addressing Base Erosion & Profit Shifting (BEPS). The Tax Insights & Policy group is involved at various stages in these emerging issues including consultation and submissions, publications and presentations and assessing the impacts of tax law changes.



Sam Mathews

Partner

I have over 14 years' experience in Corporate Tax, advising a wide range of clients on a wide range of issues. I am passionate in seeing my clients succeed and contribute to this by providing practical advice on technical issues.

I have a deep specialisation in international tax, helping clients in both the Corporate and Private (including HNWI) markets navigate the complexities of the international tax world.



Annamaria Maclean

Partner

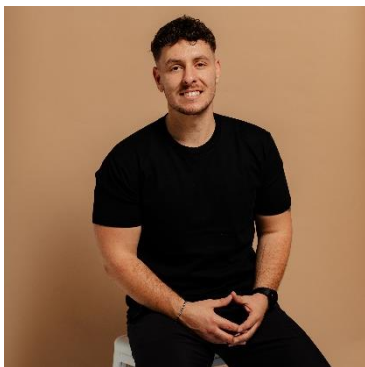
It's an interesting time to be working in tax with the constant change which brings constant challenge! I enjoy helping clients with complex tax issues and their international tax affairs. I have significant experience in tax including working as a tax manager at a large New Zealand listed corporate. I now have a particular focus on tax issues affecting corporates and multinational entities. As part of this I have been highly involved in the base erosion and profit shifting developments and assessing the impact on multinationals operating in New Zealand. I also have extensive experience working on governance reviews for corporates and putting in place the appropriate governance policies and procedures from a tax perspective.



Stephen Walker

Partner

With 16 years of international tax experience, Stephen leads a team at Deloitte that's focused on providing precise and practical tax advice to achieve positive commercial outcomes. He has extensive experience of international corporate tax advisory, planning, and compliance issues for large multinationals and individuals and now specialises in employment taxes, including employee share schemes, remote work, fringe benefit taxes and global mobility. Stephen also offers comprehensive tax advisory services to high-net worth individuals.



Steven Zinsli

CEO, Extraordinary

Steven scaled a clinical business to 120 staff across 15 locations before founding HealthNow - now rebranded as Extraordinary - to help organisations simplify non-payroll payments and employee benefits across Australia and New Zealand.



Allan Bullót

Partner

Allan is always happy to talk about all things GST. Having worked exclusively in GST in both New Zealand and Canada for well over two decades, Allan has experience in solving GST issues and problems in very practical and pragmatic way for a large variety of industries.



Sarah Kennedy
Director

I have a focus on indirect taxes including giving GST, FBT and charities advice. More specifically I really enjoy managing tax governance and procedure reviews both in preparation for and during what can be a daunting Inland Revenue risk review process. Having such a broad range of experience means that no day is the same and I really enjoy the variety in my role.

GST is a tax that on that at first glance seems simple but under the surface there's a lot of complexity in a very small Act. My favourite days are those where I can share my enthusiasm for GST with clients, help them to make sense of the rules and find a solution that is appropriate for their team and their business.



Phil Claridge
Director

Based in the Wellington tax team, I enjoy helping my clients navigate the ever-changing world of tax. I advise a range of corporate clients, with a particular focus on the property and financial services industries.

I am focused on the use of technology, including artificial intelligence, to transform the delivery of tax services, and I aim to lead the way in leveraging these tools to improve our client experience.



Amanda Williamson
Director, Artificial Intelligence & Data

Dr Amanda Williamson serves as the Director of the Deloitte New Zealand AI Institute and supports leaders and teams to capitalise on the strategic opportunities AI offers. Amanda led a technical team that has driven the design and delivery of proof-of-concepts using groundbreaking generative AI techniques, achieving productivity improvements of up to 75% among testers, and has spearheaded the development of AI strategic roadmaps and governance groups for large New Zealand organisations. She has over 15 years' experience in AI and innovation-related roles and brings thought leadership from her time as a Senior Lecturer of Innovation and Strategy for university executives and MBAs.



Liza Van Der Merwe
Partner, Deloitte Access Economics

I am a specialist Deloitte Access Economics Partner, based in Auckland. I have extensive knowledge and practical experience in econometrics, economic network regulation, competition economics, micro and macroeconomic analysis, and strategy. With a Masters degree in Econometrics and more than 20 years of experience as an economist, I have developed a deep understanding of complex economic issues and economic models that are most relevant to provide effective solutions for public and private sector clients.



Alex Mitchell
Partner

I focus on corporate tax consulting and compliance assistance, advising clients of all shapes and sizes including listed entities, private equity, property investment, and large family-owned groups. I build lasting relationships with my clients by focusing on what matters to them, getting to the heart of technical issues and breaking down the complex to deliver practical and tailored advice. I have worked extensively in tax policy navigating Inland Revenue and government and enjoy acting as an advocate for tax reform that reduces red tape and compliance costs on business. I am a member of the Chartered Accountants Australia New Zealand Tax Advisory Group.