



Contract Professional Service

Solution for unexpected needs of professional

Contract Professional Service: Solution for unexpected needs of professional

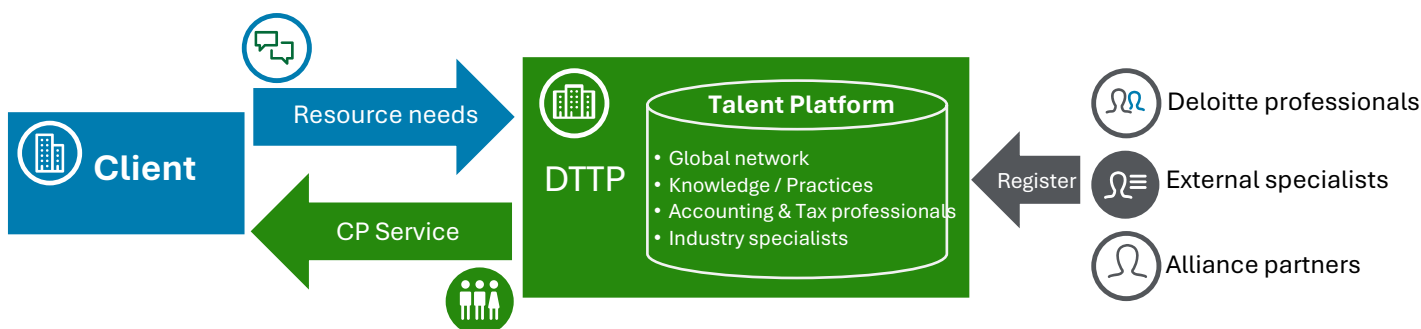
An unexpected shortage of experienced staff is oftentimes unavoidable, and can happen to any company under various situations, such as a new project launch, or the unexpected resignation of managers. Given the recent trend of a declining population and, as a result, an increase in the demand for skilled workforce, securing such professionals has become a major issue for many companies.

Deloitte Tohmatu Talent Platform Co., Ltd. (“DTTP”) offers Contract Professional (“CP”) Service to solve this issue. DTTP provides personnel who are able to assume important roles in the internal operations of a company’s finance department for a specified period of time under tailored conditions. DTTP CP examines the state of a company’s current processes and supports the company’s internal operations on-site. Moreover, our CP are able to suggest systematic improvements that are specifically designed for the unique requirements of each company.

What is DTTP’s CP Service?

DTTP is a firm that specializes in sourcing high-level specialists to support on-site activities in a company’s finance, accounting, or other related departments. The network of Deloitte to which DTTP belongs, offers the CP Service globally, and boasts a successful track-record worldwide. Built on Deloitte’s global success and experience, DTTP is thrilled to also bring the CP Service to Japan.

In the case where a company needs to:	CP Service provides personnel with:
<ul style="list-style-type: none"> ■ Replace a finance manager or other management-level employee who unexpectedly left the company or took a leave of absence. ■ Temporarily increase staff to support a heavier workload during a busy season, i.e., at the end of the fiscal year. ■ Supplement members of certain quality and quantity for a sudden or unexpected project. ■ Install new internal processes for an Account/Tax rule change and/or develop a new training scheme for migrating operations in a global restructuring. ■ Review internal processes in conjunction with the outsourcing of internal operations. <p><Support offerings to address temporary needs arising from emergency/irregular events> In the event of catastrophic events like epidemics, we offer the following:</p> <ul style="list-style-type: none"> • Support for personnel shortages due to delays in hiring, delays in entry procedures for foreigners, and delays in job transfers involving relocation. • Support in the form of remote work. • Support for the temporary relocation of operational bases when business activities are difficult in both domestic and overseas locations. 	<ul style="list-style-type: none"> ■ Management-level experience in Finance, e.g., Managers, or Controllers, etc. ■ Experience in different industries, employment structures, departments or company sizes. ■ Fluent language skills to communicate with head offices outside Japan. ■ Experience in consulting, advisory, or audit services ■ Project management experience ■ Experience in outsourcing business ■ Qualifications and professional licenses (CPA, tax professional, certified internal auditors, certified information systems auditors, etc.)



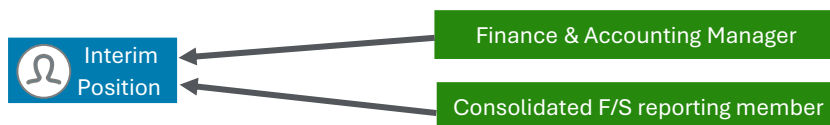
Advantages of using DTTP's CP Service

- Fill the open position flexibly in case your internal project starts or a manager resigns unexpectedly.
- Provide unique specialists, e.g. industry/subject matter experts, right when they are needed, even for the professionals that cannot easily be found as permanent employees.
- Help optimize a company's organization by working as a member of the team.
- Work on project tasks on site and suggest outside perspectives for improvements.
- Provide introductions to other Deloitte's services, such as Tax, Risk & Financial Advisory and Consulting to address potential issues, and provide tailored solutions.

Example uses of CP service

DTTP assigns the right person based your needs and issues from a pool of professionals who have expertise in finance, have native level English, and staff with overseas working experience, among other credentials. The assigned staff will provide the support you need to help solve and address your specific staffing requirements.

Case 1: Need to fill an open position with interim personnel until a full-time employee can be identified.



Case 2: Need for additional staff due to business expansion.



Case 3: Need assistant for specialized area in an IT system implementation project.



Note: The above cases are just examples. DTTP can arrange professionals with other skills and credentials.

Corporate profile

Deloitte Tohmatsu Talent Platform Co., Ltd.

President and Representative Director: Yasutomo Nakanishi

Established: February 20, 2019

Office: Shin-Tokyo Building, 3-3-1 Marunouchi, Chiyoda-ku, Tokyo 100-0005, Japan

Service;

- On-site work by highly skilled professionals
- Dispatch License #: 13-314144
- Employment Agency License #: 13-㊦-310898

Contact

Deloitte Tohmatsu Talent Platform Co., Ltd.

Tel : 03-6213-3600 (main line)

email : dttp@tohmatsu.co.jp

Deloitte.

デロイトトーマツ

Deloitte Tohmatsu Group (Deloitte Japan) is a collective term that refers to Deloitte Tohmatsu Group Japan LLC, which is the Member of Deloitte Asia Pacific Limited and of the Deloitte Network in Japan, and firms affiliated with Deloitte Tohmatsu Group Japan LLC that include Deloitte Touche Tohmatsu LLC, Deloitte Tohmatsu LLC, Deloitte Tohmatsu Tax Co., and DT Legal Japan. Deloitte Tohmatsu Group is known as one of the largest professional services groups in Japan. Through the firms in the Group, Deloitte Tohmatsu Group provides professional services in accordance with applicable laws and regulations. With more than 20,000 people in over 30 cities throughout Japan, Deloitte Tohmatsu Group serves a number of clients including multinational enterprises and major Japanese businesses. For more information, please visit the Group's website at www.deloitte.com/jp.

Deloitte refers to one or more of Deloitte Touche Tohmatsu Limited ("Deloitte Global"), its global network of member firms, and their related entities (collectively, the "Deloitte organization"). Deloitte Global and each of its member firms and related entities are legally separate and independent entities, which cannot obligate or bind each other in respect of third parties. Deloitte Global and each of its member firm and related entity is liable only for its own acts and omissions, and not those of each other. Deloitte Global does not provide services to clients. Please see www.deloitte.com/about to learn more. Deloitte Asia Pacific Limited is a company limited by guarantee and a member firm of Deloitte Global. Members of Deloitte Asia Pacific Limited and their related entities, each of which is a separate and independent legal entity, provide services from more than 100 cities across the region, including Auckland, Bangkok, Beijing, Bengaluru, Hanoi, Hong Kong, Jakarta, Kuala Lumpur, Manila, Melbourne, Mumbai, New Delhi, Osaka, Seoul, Shanghai, Singapore, Sydney, Taipei and Tokyo.

Deloitte provides leading professional services to nearly 90% of the Fortune Global 500® and thousands of private companies. Our people deliver measurable and lasting results that help reinforce public trust in capital markets and enable clients to transform and thrive. Building on its 180-year history, Deloitte spans more than 150 countries and territories. Learn how Deloitte's approximately 460,000 people worldwide make an impact that matters at www.deloitte.com.

This communication contains general information only, and none of Deloitte Touche Tohmatsu Limited ("Deloitte Global"), its global network of member firms, or their related entities (collectively, the "Deloitte organization") is, by means of this communication, rendering professional advice or services. Before making any decision or taking any action that may affect your finances or your business, you should consult a qualified professional adviser. No representations, warranties or undertakings (express or implied) are given as to the accuracy or completeness of the information in this communication, and none of Deloitte Global, its member firms, related entities, employees or agents shall be liable or responsible for any loss or damage whatsoever arising directly or indirectly in connection with any person relying on this communication. Deloitte Global and each of its member firms, and their related entities, are legally separate and independent entities.

Member of

Deloitte Touche Tohmatsu Limited

© 2026. For information, contact Deloitte Tohmatsu Group.



IS 669126 / ISO 27001



BCMS 764479 / ISO 22301

IS/BCMSそれぞれの認証範囲はこちらをご覧ください
<http://www.bsigroup.com/clientDirectory>