

**Deloitte.**  
デロイト トーマツ

Cyber as a Service  
by Deloitte

Advance the way you operate

# Cyber as a Service by Deloitte

Deloitte's Cyber as a Service is designed to drive strategic outcomes across your cyber program to effectively secure and enable your business, all while reducing associated costs. The model enables large-scale, end-to-end implementation and operate services that are fully customizable and tech-agnostic.



## Enhance your security posture

With today's fast-evolving cyber threat landscape, leading businesses invest heavily in security resources and technology. Yet many struggle to keep up. Challenges with integrating security tools into existing systems and processes are exacerbated by a widening cybersecurity skills gap and a high industry turnover rate. This leaves many organizations with a fragmented, inefficient security architecture, which exposes them to elevated security risk along with surging annual costs just to maintain the program.

In an era of reduced budgets and increased financial scrutiny, security teams now face two competing, daunting objectives: **How do I effectively protect the business while lowering my operating costs to meet reduced budget requirements?** Deloitte's Cyber as a Service can help.



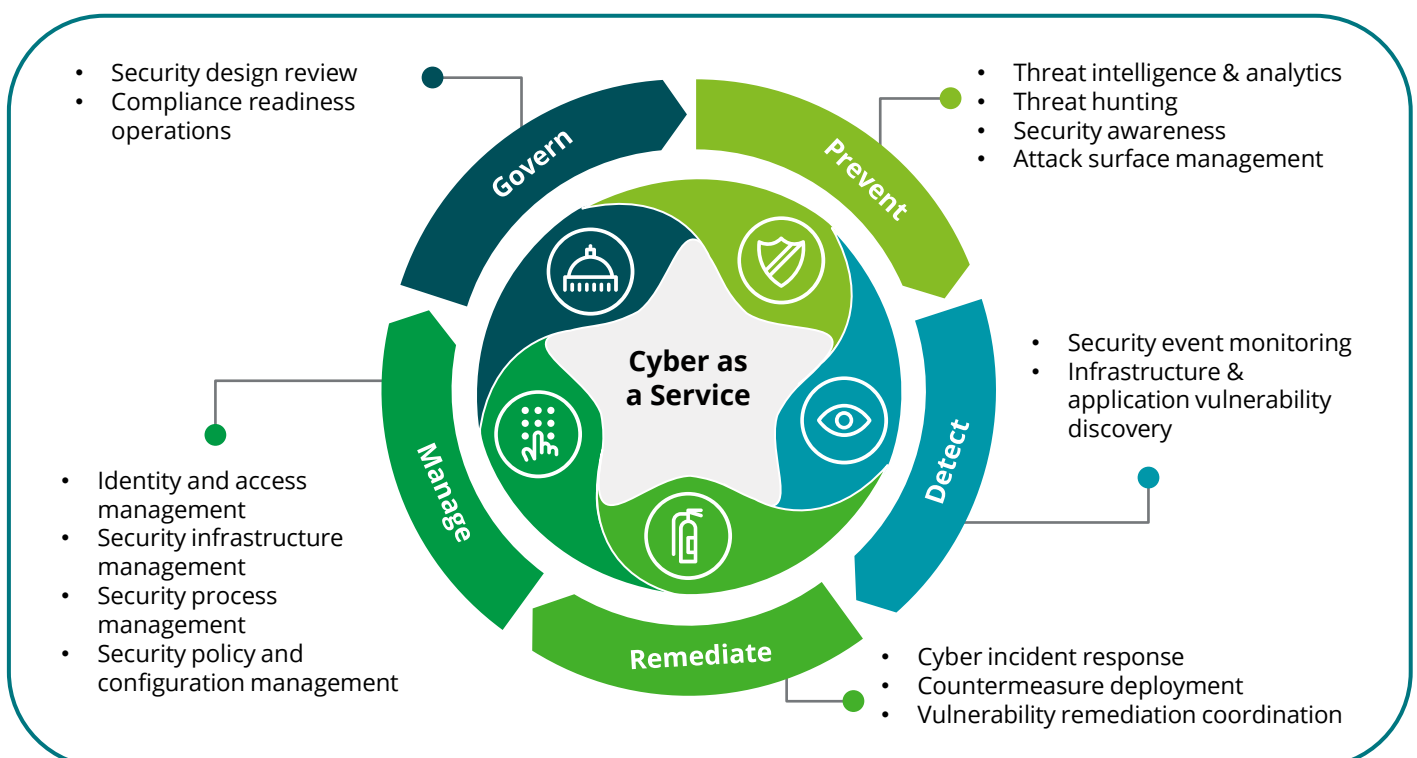
## Manage cyber talent risks



## Reduce operational costs

Deloitte's Cyber as a Service model helps organizations manage security by embedding our skilled cyber resources directly into your existing team, under your leadership. With Deloitte responsible for the day-to-day security operations environment, your existing security team will have the time to focus more on strategic objectives.

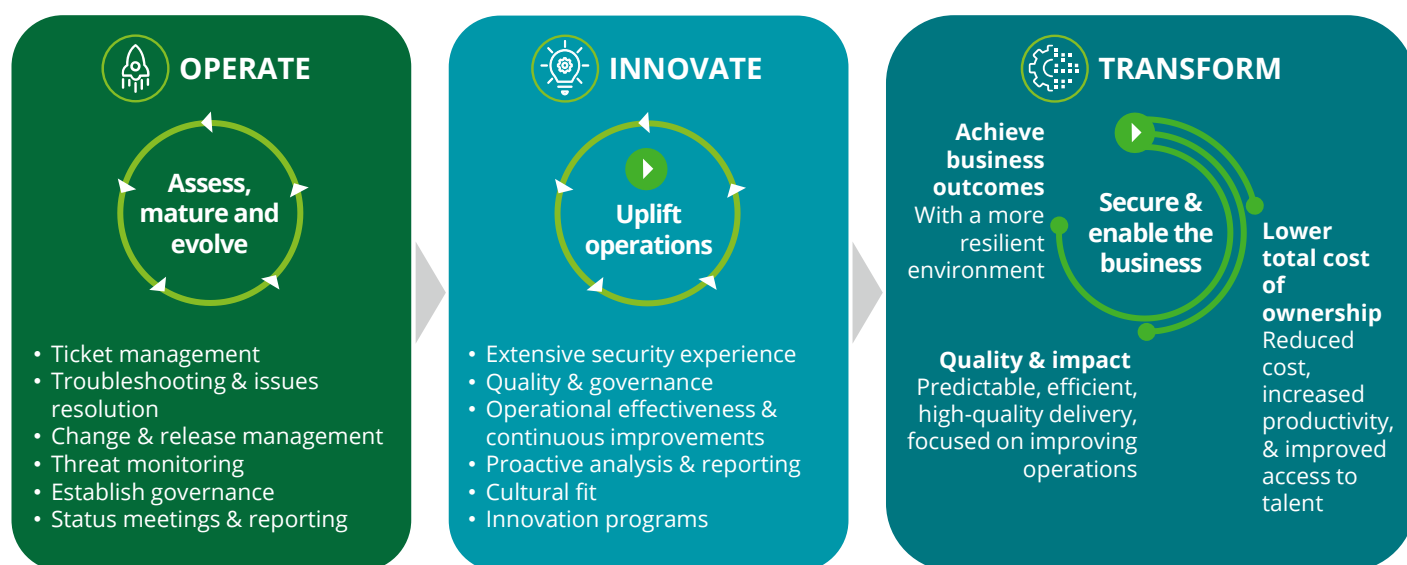
Continuous innovation is at the heart of our approach. We help transform cybersecurity programs through the adoption of new technologies, domain experience, defensive strategies, and industry knowledge. As a result, your cybersecurity program can be robust, cost-effective, and aligned with business goals.





## How can Cyber as a Service help you maintain security while fostering growth and resilience?

Cyber as a Service not only delivers consistent service level performance for your security operations but also fosters a culture of adding value through innovation. We continuously seek opportunities for improvement across many operational areas, helping you transform and advance your capabilities. This dual approach leads to better business outcomes, enhancing the effectiveness of your security program while decreasing your costs.



## Key benefits

- Cost optimization**  
 Reduce costs by leveraging our global reach, industry experience, standardization, automation, and skilled resources.
- Mature cyber capabilities**  
 Customizable, end-to-end operate services, around the clock across many cyber domains to strengthen and transform existing capabilities.
- Skilled workforce availability**  
 Ability to efficiently scale up and down to meet new demands, and free up key internal resources to areas of strategic growth.
- Vigorous cybersecurity program**  
 Move from a reactive security program to a proactive capability that elevates the business-relevance of the cyber function.
- Vigilant regulatory surveillance**  
 Enable maintenance of regulatory compliance through risk-based controls that proactively adhere to changes set forth by regulatory agencies or authorities.

### What questions are clients asking?

"How can I reduce operational costs without reducing the effectiveness of my security posture?"

"Are we effectively addressing security risk for an organization of our size and industry?"

"How can I recruit and retain essential, specialized security professionals?"

"Is my cyber program performing at its required level of maturity and at a level comparable to or above my industry peers?"

"Are we innovating to proactively defend against and stay ahead of evolving threats?"

## Let's talk



**Kohei Sato**  
Partner  
Deloitte Tohmatsu Cyber LLC  
[kohei.sato@tohmatsu.co.jp](mailto:kohei.sato@tohmatsu.co.jp)



**Akinori Toriyabe**  
Managing Director  
Deloitte Tohmatsu Cyber LLC  
[akinori.toriyabe@tohmatsu.co.jp](mailto:akinori.toriyabe@tohmatsu.co.jp)



**Taro Nagura**  
Partner  
Deloitte Tohmatsu Cyber LLC  
[tanagura@tohmatsu.co.jp](mailto:tanagura@tohmatsu.co.jp)

# Deloitte.

## デロイト トーマツ

Deloitte Tohmatsu Group (Deloitte Japan) is a collective term that refers to Deloitte Tohmatsu Group Japan LLC, which is the Member of Deloitte Asia Pacific Limited and of the Deloitte Network in Japan, and firms affiliated with Deloitte Tohmatsu Group Japan LLC that include Deloitte Touche Tohmatsu LLC, Deloitte Tohmatsu LLC, Deloitte Tohmatsu Tax Co., and DT Legal Japan. Deloitte Tohmatsu Group is known as one of the largest professional services groups in Japan. Through the firms in the Group, Deloitte Tohmatsu Group provides professional services in accordance with applicable laws and regulations. With more than 20,000 people in over 30 cities throughout Japan, Deloitte Tohmatsu Group serves a number of clients including multinational enterprises and major Japanese businesses. For more information, please visit the Group's website at [www.deloitte.com/jp](http://www.deloitte.com/jp).

Deloitte refers to one or more of Deloitte Touche Tohmatsu Limited ("Deloitte Global"), its global network of member firms, and their related entities (collectively, the "Deloitte organization"). Deloitte Global and each of its member firms and related entities are legally separate and independent entities, which cannot obligate or bind each other in respect of third parties. Deloitte Global and each of its member firms and related entities are liable only for their own acts and omissions, and not for those of one another. Deloitte Global does not provide services to clients. Please see [www.deloitte.com/about](http://www.deloitte.com/about) to learn more.

Deloitte Asia Pacific Limited is a company limited by guarantee and a member firm of Deloitte Global. Members of Deloitte Asia Pacific Limited and their related entities, each of which is a separate and independent legal entity, provide services from more than 100 cities across the region, including Auckland, Bangkok, Beijing, Bengaluru, Hanoi, Hong Kong, Jakarta, Kuala Lumpur, Manila, Melbourne, Mumbai, New Delhi, Osaka, Seoul, Shanghai, Singapore, Sydney, Taipei and Tokyo.

Deloitte provides leading professional services to nearly 90% of the Fortune Global 500® and thousands of private companies. Our people deliver measurable and lasting results that help reinforce public trust in capital markets and enable clients to transform and thrive. Building on its 180-year history, Deloitte spans more than 150 countries and territories. Learn how Deloitte's approximately 460,000 people worldwide make an impact that matters at [www.deloitte.com](http://www.deloitte.com).

This communication contains general information only, and none of Deloitte Touche Tohmatsu Limited ("Deloitte Global"), its global network of member firms, or their related entities (collectively, the "Deloitte organization") is, by means of this communication, rendering professional advice or services. Before making any decision or taking any action that may affect your finances or your business, you should consult a qualified professional adviser. No representations, warranties or undertakings (express or implied) are given as to the accuracy or completeness of the information in this communication, and none of Deloitte Global, its member firms, related entities, employees or agents shall be liable or responsible for any loss or damage whatsoever arising directly or indirectly in connection with any person relying on this communication. Deloitte Global and each of its member firms, and their related entities, are legally separate and independent entities.

Member of  
**Deloitte Touche Tohmatsu Limited**

© 2025. For information, contact Deloitte Tohmatsu Group.



**IS 669126 / ISO 27001**



**BCMS 764479 / ISO 22301**

Please see here for the scope of IS/BCMS certifications  
<https://www.bsigroup.com/clientDirectory>