

Deloitte.



Taxtitude

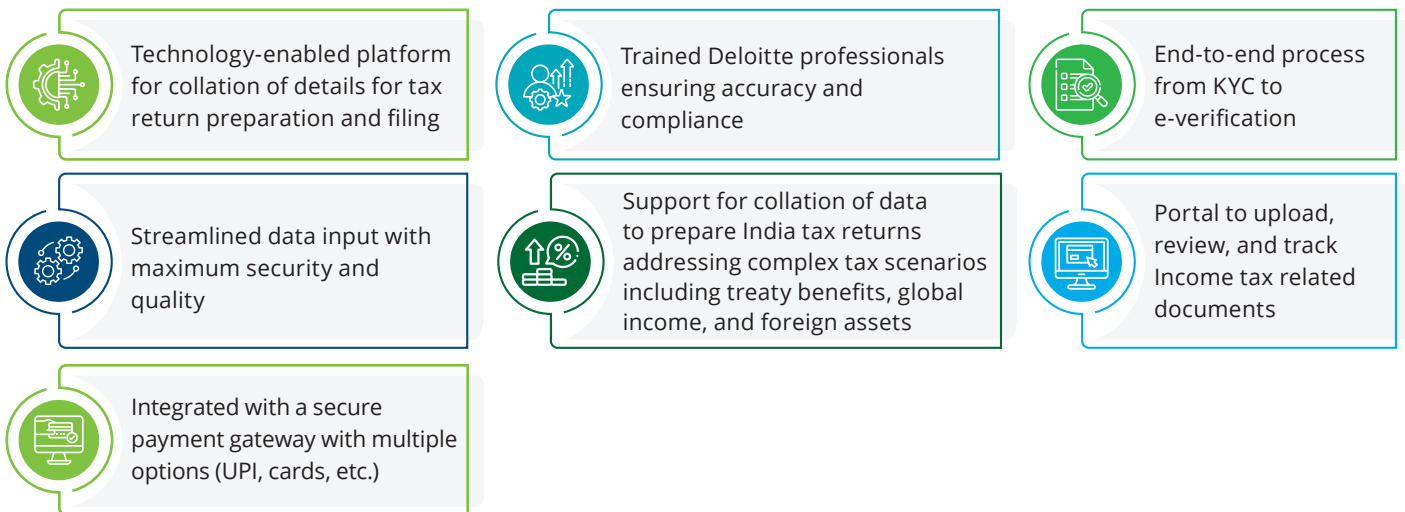
Tax Transformation Consulting

February 2026

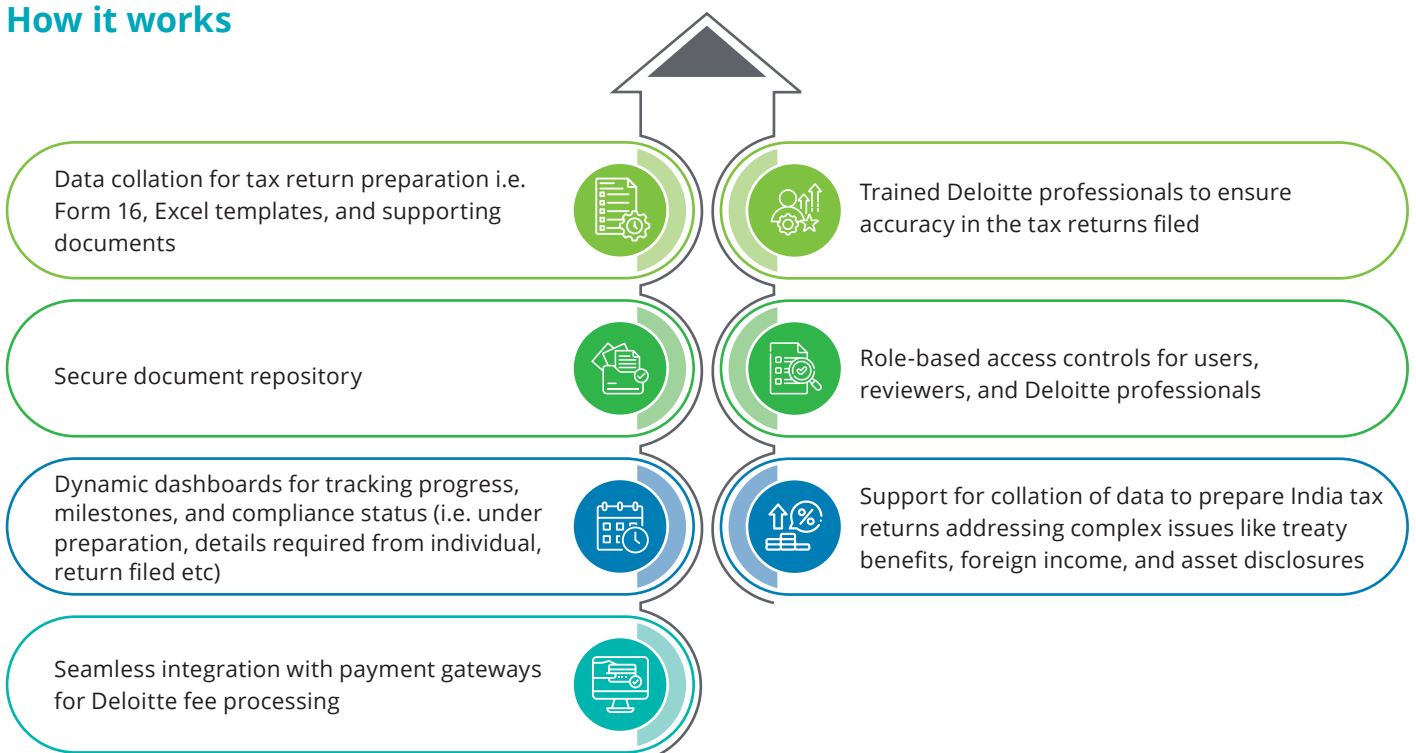
Tax Return Assistant - Simplifying individual tax filing for globally mobile professionals, NRIs, and CXOs

A secure portal designed to manage end-to-end data collection for the preparation and filing of India tax returns, covering the entire process from KYC to data submission for tax filing purposes.

What sets it apart



How it works



Built for performance



Cloud-based and secure with encryption and role-based access



Scalable and modular to support varied client needs



24x7 access to portal and support



Audit-ready documentation and compliance tracking



Indicative timelines with clear milestones for each stage

Who's using it



- CXOs and HNIs with diverse income and asset portfolios
- NRIs and foreign citizens with India-linked investments
- Short-term business travellers with cross-border tax implications
- Remote workers and globally mobile professionals
- Foreign local hires with foreign assets/income needing specialised guidance
- Individuals with complex investment income or treaty benefit claims

Talk to our experts



Divya Baweja

Global Employer Services Leader
Deloitte India
dbaweja@deloitte.com



Alok Agrawal

Partner
Deloitte India
alokagrawal@deloitte.com



Anahita Varma

Tax Transformation Consulting Leader
Deloitte India
anahitavarma@deloitte.com

Deloitte.

Deloitte refers to one or more of Deloitte Touche Tohmatsu Limited (“DTTL”), its global network of member firms, and their related entities (collectively, the “Deloitte organization”). DTTL (also referred to as “Deloitte Global”) and each of its member firms and related entities are legally separate and independent entities, which cannot obligate or bind each other in respect of third parties. DTTL and each DTTL member firm and related entity is liable only for its own acts and omissions, and not those of each other. DTTL does not provide services to clients. Please see www.deloitte.com/about to learn more.

Deloitte Asia Pacific Limited is a company limited by guarantee and a member firm of DTTL. Members of Deloitte Asia Pacific Limited and their related entities, each of which is a separate and independent legal entity, provide services from more than 100 cities across the region, including Auckland, Bangkok, Beijing, Bengaluru, Hanoi, Hong Kong, Jakarta, Kuala Lumpur, Manila, Melbourne, Mumbai, New Delhi, Osaka, Seoul, Shanghai, Singapore, Sydney, Taipei and Tokyo.

This communication contains general information only, and none of DTTL, its global network of member firms or their related entities is, by means of this communication, rendering professional advice or services. Before making any decision or taking any action that may affect your finances or your business, you should consult a qualified professional adviser.

No representations, warranties or undertakings (express or implied) are given as to the accuracy or completeness of the information in this communication, and none of DTTL, its member firms, related entities, employees or agents shall be liable or responsible for any loss or damage whatsoever arising directly or indirectly in connection with any person relying on this communication.

© 2026 Deloitte Touche Tohmatsu India LLP. Member of Deloitte Touche Tohmatsu Limited