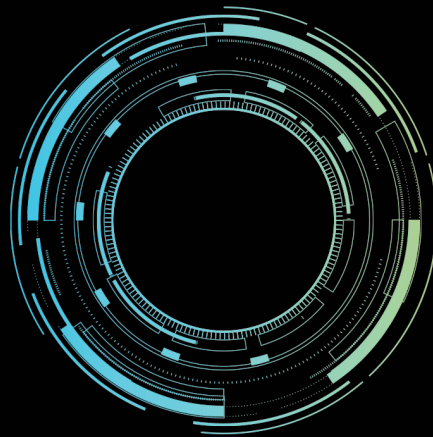
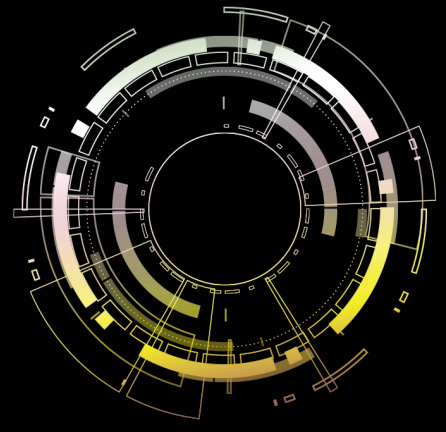
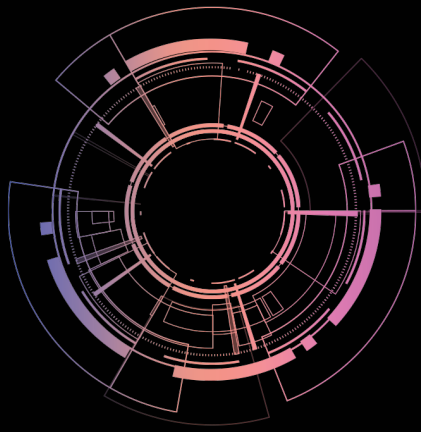
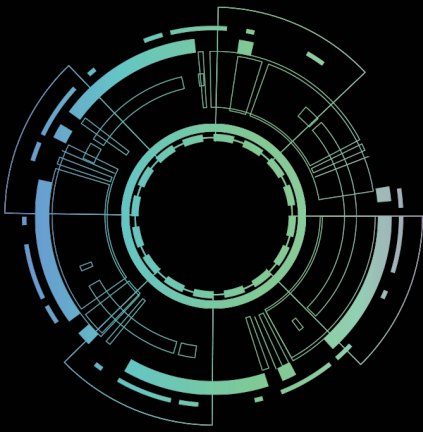


**Deloitte.**



**Bolt-on**

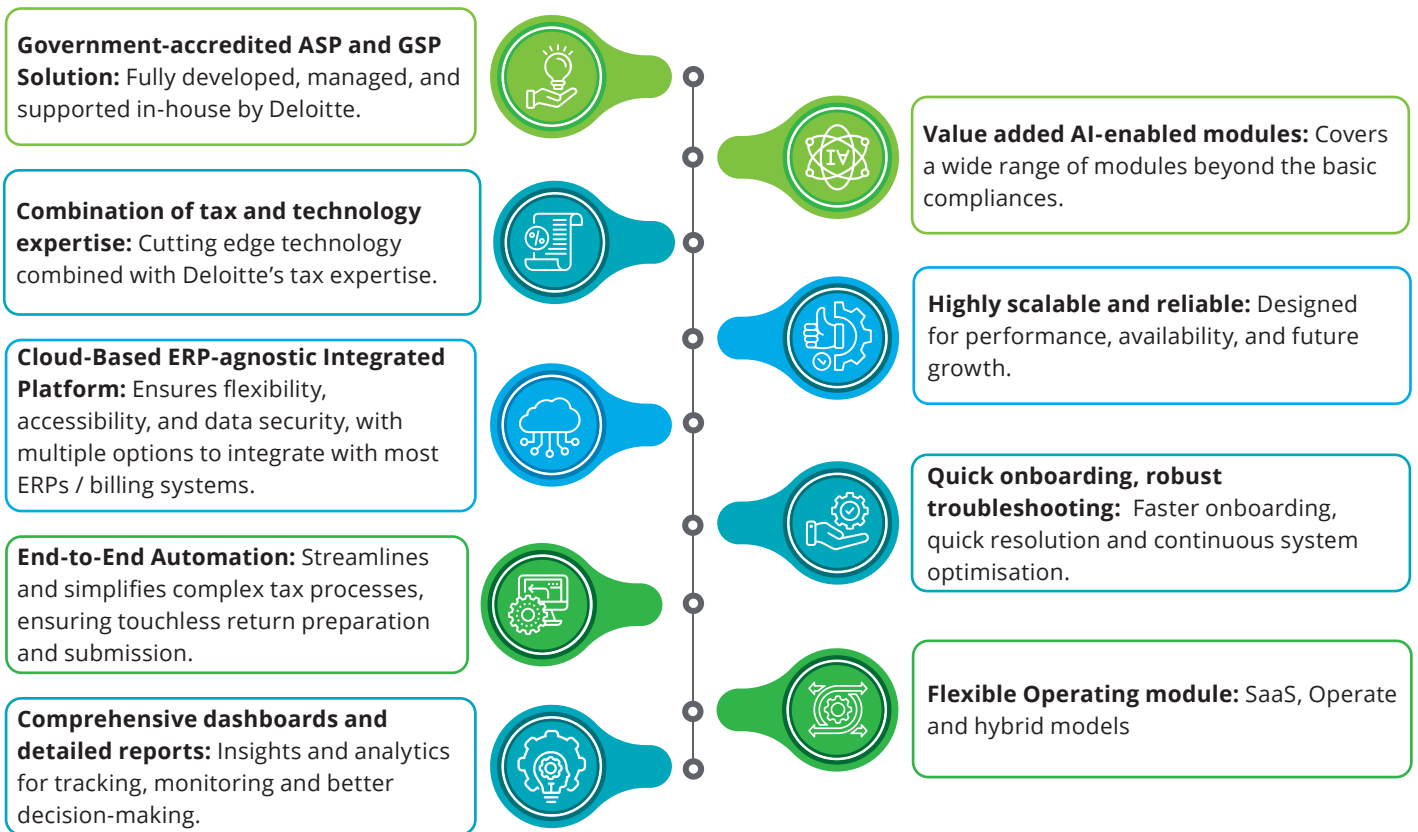
Tax Transformation Consulting

February 2026

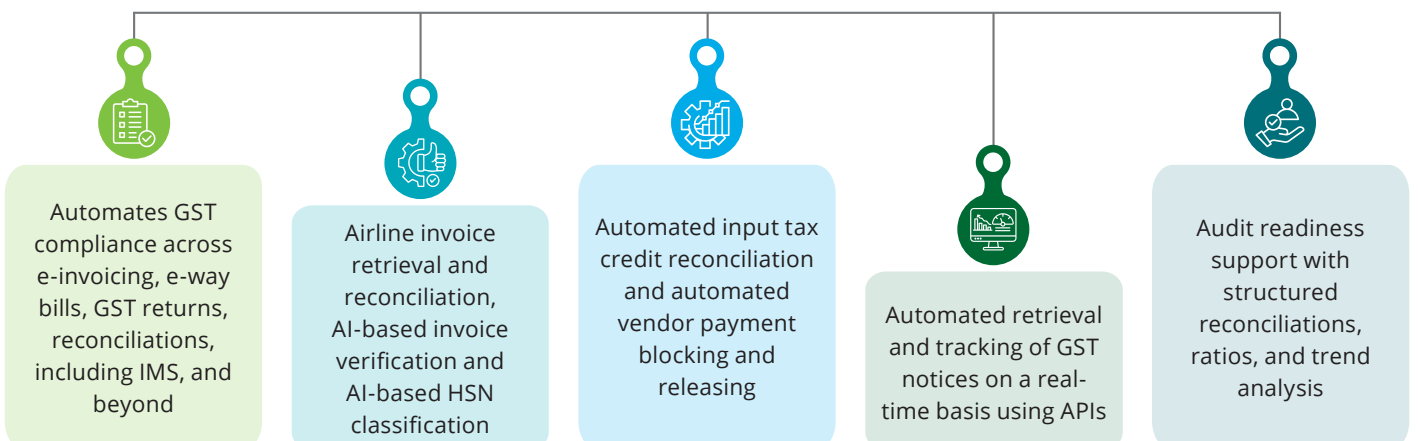
# A comprehensive AI enabled platform for Indian GST reporting and compliances

Managing GST compliance across multiple entities, systems, and stakeholders is increasingly demanding. Fragmented processes, manual reconciliations, and evolving regulatory requirements create inefficiencies and risks. Bolt-on addresses these challenges by offering a unified, automated, and intelligent platform that ensures accuracy, visibility, and control across the GST reporting and compliance lifecycle.

## What sets it apart



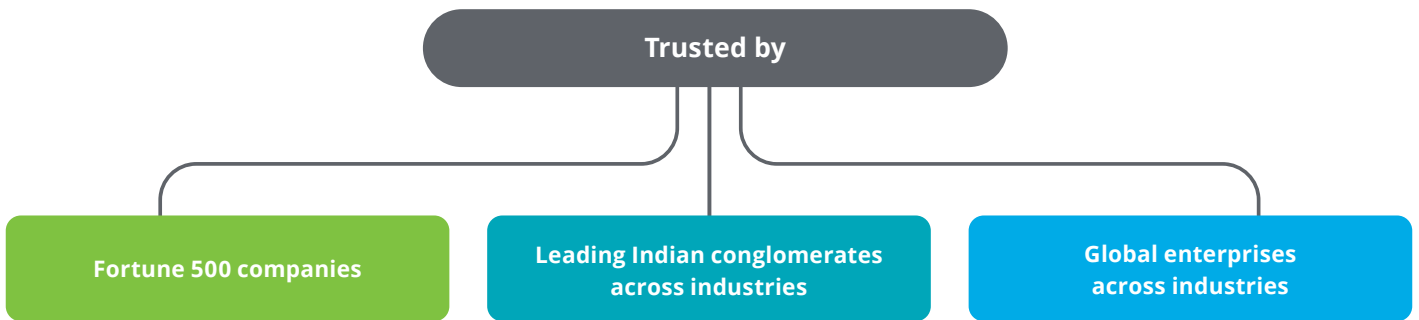
## What it covers



## Built for performance



## Who's using it



## Talk to our experts



**Anahita Varma**  
Tax Transformation Consulting  
Leader  
Deloitte India  
[anahitavarma@deloitte.com](mailto:anahitavarma@deloitte.com)



**Shrenik Shah**  
Indirect Tax  
Partner  
Deloitte India  
[shshah@deloitte.com](mailto:shshah@deloitte.com)

Write to us at [intaxtechnology@deloitte.com](mailto:intaxtechnology@deloitte.com)



Deloitte refers to one or more of Deloitte Touche Tohmatsu Limited (“DTTL”), its global network of member firms, and their related entities (collectively, the “Deloitte organization”). DTTL (also referred to as “Deloitte Global”) and each of its member firms and related entities are legally separate and independent entities, which cannot obligate or bind each other in respect of third parties. DTTL and each DTTL member firm and related entity is liable only for its own acts and omissions, and not those of each other. DTTL does not provide services to clients. Please see [www.deloitte.com/about](http://www.deloitte.com/about) to learn more.

Deloitte Asia Pacific Limited is a company limited by guarantee and a member firm of DTTL. Members of Deloitte Asia Pacific Limited and their related entities, each of which is a separate and independent legal entity, provide services from more than 100 cities across the region, including Auckland, Bangkok, Beijing, Bengaluru, Hanoi, Hong Kong, Jakarta, Kuala Lumpur, Manila, Melbourne, Mumbai, New Delhi, Osaka, Seoul, Shanghai, Singapore, Sydney, Taipei and Tokyo.

This communication contains general information only, and none of DTTL, its global network of member firms or their related entities is, by means of this communication, rendering professional advice or services. Before making any decision or taking any action that may affect your finances or your business, you should consult a qualified professional adviser.

No representations, warranties or undertakings (express or implied) are given as to the accuracy or completeness of the information in this communication, and none of DTTL, its member firms, related entities, employees or agents shall be liable or responsible for any loss or damage whatsoever arising directly or indirectly in connection with any person relying on this communication.

© 2026 Deloitte Touche Tohmatsu India LLP. Member of Deloitte Touche Tohmatsu Limited