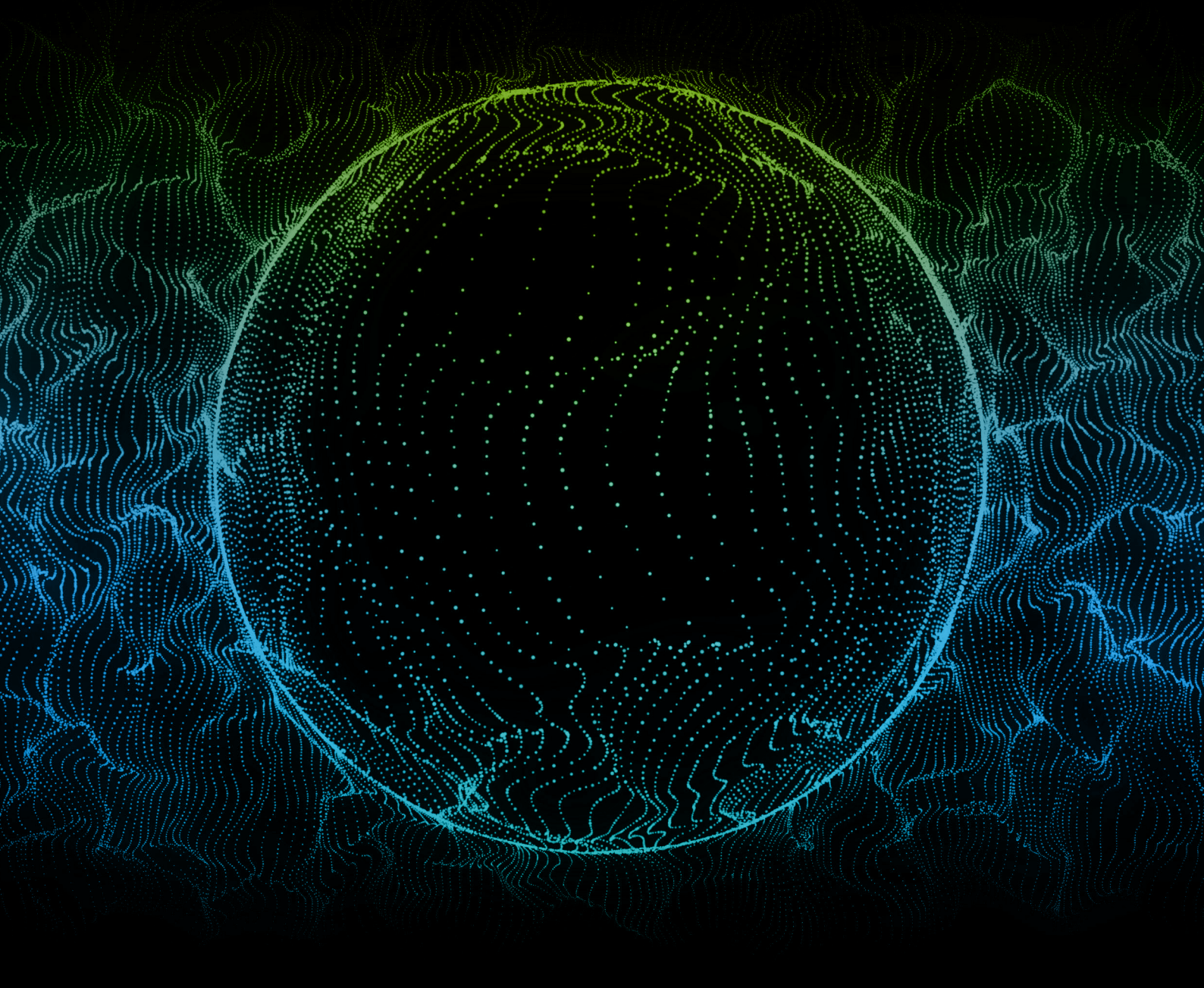


Deloitte.



Accurate. Agile. Assured.
Investment management services
that empower fund operations

April 2026

Introduction

The fund industry is evolving fast, presenting fund controllers with opportunities to lead and innovate. At the same time, challenges like skill shortages, legacy systems, fragmented data, regulatory changes, and high attrition among service providers can slow progress.

Staying ahead requires transparency, innovation, and alignment with emerging trends.



Transform your fund operations

Deloitte Assurance is uniquely positioned to help private equity (PE) funds, venture capital (VC) funds and Alternate Investment Funds (AIFs) automate the entire cycle of fund accounting through our investment management solutions.

To help fund managers be future-ready, our solutions are crafted based on a deep understanding of the industry, related business processes and stakeholder expectations. Delivered through an agile and customisable model with a transition methodology, we ensure minimal disruption to business-as-usual operations.

Our areas of strength are:



Financial and Regulatory Reporting

Preparation and review of GAAP compliant financial statements

Annual audit support

Conversion of GAAP into RAAP

Regulatory form filling and submission

Support for regulatory audits



Investor Reporting

Maintain investor fee and liquidity terms

Periodic investor reporting

General Partner monitoring

Expense and fee allocation



Fund Accounting

Maintenance of books and records

Daily profits and losses

Periodic NAV estimates

NAV allocation between master and feeder

Fee calculation - management/ incentive

Price verification/ valuation

Process corporate actions

Trade, position and cash reconciliation



Corporate Services

Review investor documentation

Issue confirmations and contract notes

Maintain share register

Perform KYC and AML checks



Tax Services

Tax compliance services for AMCs

Tax compliance services for investors

Asset testing for REITs

Our solutions are delivered by an experienced team with deep multi-GAAP and sector-specific expertise. We also uphold the highest standards of governance and confidentiality to ensure accurate, compliant, and insightful financial reporting.



Trusted partnerships. Powerful technology.

Along with our cutting-edge technology partner, **AcurPE**, we have developed a powerhouse tool designed to revolutionise the entire lifecycle of alternative investment funds. From seamless investor onboarding and smart document management to automated drawdown and distribution letters, our solution streamlines every step. Also, with automated NAV calculations and in-depth reporting and analytics on demand, managing funds becomes effortless.

Core capabilities of AcurPE:

Streamlined operations

AcurPE automates repetitive tasks, streamlining daily operations so financial professionals can focus on strategic initiatives.

Scalability

Whether you are a small VC or a large fund manager, the tool scales seamlessly to accommodate growth and evolving fund accounting and reporting needs

Comprehensive reporting

With robust reporting capabilities, AcurPE provides customisable, insightful and completely automated reports for investors in addition to a functional investor portal

Automated investor level allocation rules and fee computation

Investor-level terms configuration ensures compliance, reducing the risk of errors and regulatory misalignment

Lean, user-friendly interface

Thoughtfully designed intuitive interface that allows users of all levels to navigate easily, enhancing productivity and satisfaction.

What sets AcurPE apart:

Seamless document Management

Easily upload documents at every step to maintain a comprehensive electronic record of accounts. professionals can focus on strategic initiatives.

Tailored investor solutions

Address specific investor requirements with customisable documents

Configurable workflows

Implement maker-checker controls, tailored to client needs

Integrated smart data room

Utilise the investor portal as a data room for potential investors or during investment transactions

Capital account integration

Link capital accounts to each drawdown/distribution notice for streamlined investor communication

Enhanced data control

Master data structure ensures robust control over critical fund and investor information

Get more done with AcurPE and our proprietary project and data management platforms.

Connect with us

Anthony Crasto

Partner

Deloitte India

acrasto@deloitte.com

Rahul Chowdhary

Partner

Deloitte India

rchowdhary@deloitte.com

Akil Master

Partner

Deloitte India

akilmaster@deloitte.com

Preena Agarwal

Partner

Deloitte India

preeagarwal@deloitte.com



Deloitte refers to one or more of Deloitte Touche Tohmatsu Limited (“DTTL”), its global network of member firms, and their related entities (collectively, the “Deloitte organization”). DTTL (also referred to as “Deloitte Global”) and each of its member firms and related entities are legally separate and independent entities, which cannot obligate or bind each other in respect of third parties. DTTL and each DTTL member firm and related entity is liable only for its own acts and omissions, and not those of each other. DTTL does not provide services to clients. Please see www.deloitte.com/about to learn more.

Deloitte Asia Pacific Limited is a company limited by guarantee and a member firm of DTTL. Members of Deloitte Asia Pacific Limited and their related entities, each of which is a separate and independent legal entity, provide services from more than 100 cities across the region, including Auckland, Bangkok, Beijing, Bengaluru, Hanoi, Hong Kong, Jakarta, Kuala Lumpur, Manila, Melbourne, Mumbai, New Delhi, Osaka, Seoul, Shanghai, Singapore, Sydney, Taipei and Tokyo.

This communication contains general information only, and none of DTTL, its global network of member firms or their related entities is, by means of this communication, rendering professional advice or services. Before making any decision or taking any action that may affect your finances or your business, you should consult a qualified professional adviser.

No representations, warranties or undertakings (express or implied) are given as to the accuracy or completeness of the information in this communication, and none of DTTL, its member firms, related entities, employees or agents shall be liable or responsible for any loss or damage whatsoever arising directly or indirectly in connection with any person relying on this communication.