

Deloitte Queensland Index

Top 100 Companies

Q1 2026 - Quarterly Insight

Queensland's top 100 listed companies

Q1 2026 – Quarterly Insight

Deloitte Queensland Index - Top 100 Companies by Market Cap

Rank by Market Capitalisation			Company	Code	Market Capitalisation			Change		Change	
31 Mar 2026	31 Dec 2025	31 Dec 2024			31 Mar 2026	31 Dec 2025	31 Dec 2024	from 31 Dec 2025 to 31 Mar 2026	%	from 31 Dec 2024 to 31 Mar 2026	%
					\$ million	\$ million	\$ million	\$ million	%	\$ million	%
1	1	1	Suncorp Group Limited	SUN	17,230	18,965	24,187	(1,735)	(9.1%)	(6,957)	(28.8%)
2	2	2	Lottery Corporation Ltd	TLC	11,969	11,480	10,992	488	4.3%	976	8.9%
3	3	5	ALS Limited	ALQ	10,557	11,186	7,306	(629)	(5.6%)	3,251	44.5%
4	4	3	Technology One Limited	TNE	8,761	9,126	10,245	(366)	(4.0%)	(1,484)	(14.5%)
5	5	4	NEXTDC Limited	NXT	7,254	8,030	9,651	(775)	(9.7%)	(2,397)	(24.8%)
6	7	6	Aurizon Holdings Limited	AZJ	6,683	6,268	5,764	415	6.6%	919	15.9%
7	6	12	A.P. Eagers Limited	APE	6,349	6,957	3,056	(608)	(8.7%)	3,293	107.8%
8	11	8	New Hope Corporation Limited	NHC	4,947	3,397	4,190	1,551	45.7%	757	18.1%
9	8	7	Bank Of Queensland Limited	BOQ	4,399	4,293	4,413	105	2.5%	(14)	(0.3%)
10	9	11	National Storage REIT	NSR	3,889	3,833	3,233	56	1.5%	656	20.3%
11	10	10	Super Retail Group Limited	SUL	2,895	3,620	3,428	(725)	(20.0%)	(533)	(15.5%)
12	14	16	Dalrymple Bay Infrastructure Ltd	DBI	2,504	2,484	1,785	20	0.8%	719	40.3%
13	17	14	Stanmore Coal Limited	SMR	2,470	2,091	2,713	379	18.1%	(243)	(9.0%)
14	15	15	Corporate Travel Management Limited	CTD	2,232	2,232	1,881	-	0.0%	352	18.7%
15	12	9	Flight Centre Travel Group Limited	FLT	2,199	3,187	3,681	(988)	(31.0%)	(1,481)	(40.2%)
16	13	-	Virgin Australia Holdings Limited	VGN	1,798	2,614	-	(817)	(31.2%)	1,798	N/A
17	19	-	GemLife Communities Group	GLF	1,688	1,932	-	(243)	(12.6%)	1,688	N/A
18	18	13	Domino's Pizza Enterprises Limited	DMP	1,533	1,987	2,723	(454)	(22.9%)	(1,190)	(43.7%)
19	22	35	Elevra Lithium Limited	ELV	1,416	1,361	312	55	4.0%	1,104	354.3%

Rank by Market Capitalisation			Company	Code	Market Capitalisation			Change		Change	
31 Mar 2026	31 Dec 2025	31 Dec 2024			31 Mar 2026	31 Dec 2025	31 Dec 2024	from 31 Dec 2025 to 31 Mar 2026	%	from 31 Dec 2024 to 31 Mar 2026	%
					\$ million	\$ million	\$ million	\$ million	%	\$ million	%
20	16	18	Megaport Limited	MP1	1,286	2,161	1,182	(875)	(40.5%)	104	8.8%
21	20	25	Navigator Global Investments Limited	NGI	1,041	1,454	843	(413)	(28.4%)	198	23.5%
22	24	20	Cromwell Property Group	CMW	1,034	1,205	995	(170)	(14.1%)	39	3.9%
23	23	23	Collins Foods Limited	CKF	1,034	1,224	855	(190)	(15.5%)	178	20.9%
24	21	21	Data#3 Limited	DTL	1,031	1,397	990	(366)	(26.2%)	41	4.2%
25	28	26	PWR Holdings Limited	PWH	865	790	790	75	9.6%	75	9.4%
26	31	42	Wagners Holding Company Limited	WGN	833	717	257	116	16.2%	576	224.0%
27	27	24	Australian Agricultural Company Limited	AAC	814	871	844	(57)	(6.6%)	(30)	(3.6%)
28	25	30	The Star Entertainment Group Limited	SGR	763	1,194	545	(431)	(36.1%)	219	40.1%
29	29	36	Santana Minerals Limited	SMI	648	769	310	(121)	(15.7%)	337	108.7%
30	35	17	Coronado Global Resources Inc.	CRN	604	536	1,282	67	12.5%	(679)	(52.9%)
31	34	28	Universal Store Holdings Ltd	UNI	598	614	658	(16)	(2.6%)	(61)	(9.2%)
32	33	29	GWA Group Limited	GWA	543	664	642	(121)	(18.2%)	(99)	(15.4%)
33	30	22	Jumbo Interactive Limited	JIN	488	729	872	(241)	(33.0%)	(384)	(44.0%)
34	32	48	Aeris Resources Limited	AIS	473	690	169	(217)	(31.4%)	304	179.3%
35	37	33	Metro Mining Limited	MMI	436	464	357	(28)	(6.1%)	79	22.1%
36	38	38	Aurelia Metals Limited	AMI	423	423	288	0	0.0%	136	47.2%
37	46	62	Omega Oil & Gas Limited	OMA	365	204	109	162	79.3%	257	236.2%
38	39	40	Lgi Ltd	LGI	352	418	265	(66)	(15.8%)	87	32.9%
39	41	60	Pacific Lime and Cement Limited	PLA	240	262	119	(22)	(8.2%)	121	101.1%
40	40	32	Novonix Limited	NVX	233	353	417	(120)	(34.1%)	(185)	(44.3%)
41	45	41	Eureka Group Holdings Limited	EGH	228	207	261	21	10.3%	(33)	(12.5%)
42	43	44	Garda Diversified Property Fund	GDF	226	237	244	(11)	(4.5%)	(18)	(7.4%)

Rank by Market Capitalisation			Company	Code	Market Capitalisation			Change		Change		
31 Mar 2026	31 Dec 2025	31 Dec 2024			31 Mar 2026	31 Dec 2025	31 Dec 2024	from 31 Dec 2025 to 31 Mar 2026	%	from 31 Dec 2024 to 31 Mar 2026	%	
						\$ million	\$ million	\$ million	\$ million	%	\$ million	%
43	42	39	Lindsay Australia Limited	LAU	221	257	275	(36)	(14.1%)	(55)	(19.8%)	
44	48	47	Capral Limited	CAA	194	194	171	(0)	(0.1%)	23	13.4%	
45	36	19	G8 Education Limited	GEM	185	523	1,039	(338)	(64.7%)	(854)	(82.2%)	
46	68	72	Austral Resources Limited	AR1	179	97	84	82	85.2%	95	112.6%	
47	82	54	Terracom Limited	TER	175	53	144	122	231.0%	31	21.4%	
48	63	58	Alligator Energy Limited	AGE	169	111	132	58	52.0%	37	28.0%	
49	54	50	Comet Ridge Limited	COI	168	162	161	6	3.7%	6	4.0%	
50	56	68	Brisbane Broncos Limited	BBL	167	142	93	25	17.2%	74	78.9%	
51	44	57	MotorCycle Holdings Limited	MTO	161	229	139	(68)	(29.7%)	22	15.4%	
52	55	79	KGL Resources Limited	KGL	150	158	62	(8)	(4.9%)	89	144.1%	
53	66	107	Elementos Limited	ELT	148	105	17	43	40.7%	131	793.0%	
54	57	128	GBM Resources Limited	GBM	147	142	9	5	3.8%	138	1491.3%	
55	52	49	EMvision Medical Devices Limited	EMV	147	165	162	(19)	(11.2%)	(15)	(9.4%)	
56	59	45	Michael Hill International Limited	MHJ	142	133	227	10	7.2%	(85)	(37.3%)	
57	58	55	Queensland Pacific Metals Limited	QPM	127	134	141	(8)	(5.7%)	(15)	(10.3%)	
58	62	52	Shine Corporate Limited	SHJ	126	124	152	2	1.4%	(26)	(17.1%)	
59	50	95	Felix Gold Ltd	FXG	125	175	28	(49)	(28.2%)	98	354.5%	
60	53	74	Zeotech Ltd	ZEO	123	165	80	(41)	(25.0%)	44	54.9%	
61	64	66	Tamawood Limited	TWD	111	111	99	0	0.0%	12	12.1%	
62	47	31	Alliance Aviation Services Limited	AQZ	93	199	477	(106)	(53.4%)	(385)	(80.6%)	
63	74	75	Mitchell Services Limited	MSV	91	70	72	21	30.3%	19	25.7%	
64	49	76	Reef Casino Trust	RCT	86	175	72	(89)	(50.9%)	14	19.1%	
65	70	61	Diatreme Resources Limited	DRX	85	95	110	(10)	(10.5%)	(25)	(22.7%)	

Rank by Market Capitalisation			Company	Code	Market Capitalisation			Change		Change	
31 Mar 2026	31 Dec 2025	31 Dec 2024			31 Mar 2026	31 Dec 2025	31 Dec 2024	from 31 Dec 2025 to 31 Mar 2026	%	from 31 Dec 2024 to 31 Mar 2026	%
					\$ million	\$ million	\$ million	\$ million	%	\$ million	%
66	61	56	Embark Early Education Limited	EVO	81	127	140	(46)	(35.9%)	(59)	(42.0%)
67	65	67	Anson Resources Ltd	ASN	78	105	97	(27)	(26.1%)	(19)	(19.8%)
68	95	120	SportsHero Limited	SHO	78	38	12	40	106.6%	65	524.6%
69	67	70	Li-S Energy Limited	LIS	76	98	86	(22)	(22.6%)	(10)	(11.9%)
70	51	-	Infragreen Group Limited	IFN	75	168	-	(93)	(55.6%)	75	N/A
71	80	119	Sunshine Gold Ltd	SHN	75	58	13	17	28.7%	62	488.5%
72	60	53	LTR Pharma Limited	LTP	74	131	147	(57)	(43.7%)	(73)	(49.8%)
73	85	89	Central Petroleum Limited	CTP	70	47	39	23	49.7%	30	76.7%
74	73	65	Gold Hydrogen Ltd	GHY	67	74	100	(7)	(9.8%)	(33)	(33.1%)
75	69	64	People Infrastructure Ltd	PPE	64	95	103	(32)	(33.0%)	(39)	(38.0%)
76	71	51	Retail Food Group Limited	RFG	63	93	159	(31)	(32.9%)	(96)	(60.6%)
77	79	82	Advance Nanotek Limited	ANO	60	60	47	-	0.0%	12	25.4%
78	77	90	Verbrec Ltd	VBC	58	64	39	(6)	(9.6%)	19	48.4%
79	90	81	Mastermyne Group Limited	MYE	58	43	51	15	35.9%	7	14.1%
80	84	121	Citigold Corporation Limited	CTO	57	48	12	9	18.8%	45	375.0%
81	75	93	True North Copper Limited	TNC	54	69	31	(15)	(21.3%)	23	75.1%
82	88	85	Change Financial Limited	CCA	53	46	44	7	14.9%	9	20.9%
83	81	78	Far East Gold Ord Shs	FEG	50	57	62	(7)	(12.9%)	(12)	(19.8%)
84	87	69	Microba Life Sciences Ltd	MAP	46	46	87	-	0.0%	(41)	(47.0%)
85	72	46	COSOL Limited	COS	39	90	185	(51)	(56.6%)	(145)	(78.8%)
86	86	80	Flagship Investments Limited	FSI	37	46	54	(9)	(19.0%)	(17)	(31.0%)
87	78	84	Anteo Diagnostics Limited	ADO	36	60	45	(24)	(40.5%)	(10)	(21.2%)
88	91	124	DGR Global Limited	DGR	35	41	10	(5)	(12.8%)	25	240.0%

Rank by Market Capitalisation			Company	Code	Market Capitalisation			Change		Change	
31 Mar 2026	31 Dec 2025	31 Dec 2024			31 Mar 2026	31 Dec 2025	31 Dec 2024	from 31 Dec 2025 to 31 Mar 2026	%	from 31 Dec 2024 to 31 Mar 2026	%
					\$ million	\$ million	\$ million	\$ million	%	\$ million	%
89	76	102	Ballymore Resources Limited	BMR	34	66	21	(32)	(48.2%)	13	61.6%
90	93	88	Global Masters Fund Limited	GFL	33	40	40	(7)	(18.2%)	(8)	(19.1%)
91	-	-	Richmond Vanadium Technology Limited	RVT	32	-	-	32	N/A	32	N/A
92	97	115	Australian Mines Limited	AUZ	31	35	13	(4)	(11.8%)	17	131.6%
93	101	-	Group One Capital Limited	G1C	29	25	-	5	18.6%	29	N/A
94	89	91	PPK Group Limited	PPK	29	43	32	(14)	(32.6%)	(3)	(8.6%)
95	83	83	Felix Resources Limited	FLX	29	49	47	(21)	(41.8%)	(18)	(39.1%)
96	94	86	National Tyre & Wheel Limited	NTD	29	39	44	(10)	(26.1%)	(15)	(34.6%)
97	99	146	Litchfield Minerals Limited	LMS	26	28	4	(2)	(7.1%)	23	644.6%
98	137	151	Auking Mining Limited	AKN	26	4	1	22	533.5%	24	1647.5%
99	92	137	Savannah Goldfields Limited	SVG	24	41	6	(17)	(42.1%)	17	280.9%
100	113	129	Great Divide Mining Ltd	GDM	23	15	9	8	55.7%	14	153.5%
Top 100					120,375	128,432	118,583	(8,057)	(6.3%)	1,792	1.5%
Remaining companies					463	1,628	2,650	(1,165)	(71.6%)	(2,188)	(82.5%)
Total QLD index					120,838	130,060	121,234	(9,222)	(7.1%)	(396)	(0.3%)

Contacts and Sources

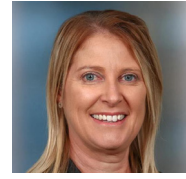
For more information or any questions on this publication or Deloitte's services contact



Rob McConnell
QLD Leader,
M&A
+61 7 3308 7300
robmcconnel@deloitte.com.au



Renee Jaszewski
Partner,
M&A Valuations
+61 7 3308 7377
rjaszewski@deloitte.com.au



Judith Donovan
Managing Partner,
Queensland
+61 7 3308 7327
jdonovan@deloitte.com.au



Nick Bright
Partner,
M&A Transaction Services
+61 7 3308 7392
nbright@deloitte.com.au



Pradeep Philip
Lead Partner,
Deloitte Access Economics
+61 7 3308 7224
pphilip@deloitte.com.au



Claire Ibrahim
Partner,
Deloitte Access Economics
+61 7 3308 1249
cibrahim@deloitte.com.au

Queensland listed company data presented within:

- Is sourced from S&P Capital IQ

For more M&A insights visit the [Deloitte M&A website](#)

Deloitte.

This communication contains general information only, and none of Deloitte Touche Tohmatsu Limited ("DTTL"), its global network of member firms or their related entities (collectively, the "Deloitte organisation") is, by means of this communication, rendering professional advice or services. Before making any decision or taking any action that may affect your finances or your business, you should consult a qualified professional adviser.

No representations, warranties or undertakings (express or implied) are given as to the accuracy or completeness of the information in this communication, and none of DTTL, its member firms, related entities, employees or agents shall be liable or responsible for any loss or damage whatsoever arising directly or indirectly in connection with any person relying on this communication. DTTL and each of its member firms, and their related entities, are legally separate and independent entities

Deloitte refers to one or more of Deloitte Touche Tohmatsu Limited ("DTTL"), its global network of member firms, and their related entities (collectively, the "Deloitte organisation"). DTTL (also referred to as "Deloitte Global") and each of its member firms and related entities are legally separate and independent entities, which cannot obligate or bind each other in respect of third parties. DTTL and each DTTL member firm and related entity is liable only for its own acts and omissions, and not those of each other. DTTL does not provide services to clients. Please see www.deloitte.com/about to learn more.

About Deloitte

Deloitte is a leading global provider of audit and assurance, consulting, financial advisory, risk advisory, tax and related services. Our global network of member firms and related entities in more than 150 countries and territories (collectively, the "Deloitte organisation") serves four out of five Fortune Global 500® companies. Learn how Deloitte's approximately 312,000 people make an impact that matters at www.deloitte.com.

About Deloitte Asia Pacific

Deloitte Asia Pacific Limited is a company limited by guarantee and a member firm of DTTL. Members of Deloitte Asia Pacific Limited and their related entities, each of which are separate and independent legal entities, provide services from more than 100 cities across the region, including Auckland, Bangkok, Beijing, Hanoi, Hong Kong, Jakarta, Kuala Lumpur, Manila, Melbourne, Osaka, Seoul, Shanghai, Singapore, Sydney, Taipei and Tokyo.

About Deloitte Australia

The Australian partnership of Deloitte Touche Tohmatsu is a member of Deloitte Asia Pacific Limited and the Deloitte organisation. As one of Australia's leading professional services firms, Deloitte Touche Tohmatsu and its affiliates provide audit, tax, consulting, risk advisory, and financial advisory services through approximately 8000 people across the country. Focused on the creation of value and growth, and known as an employer of choice for innovative human resources programs, we are dedicated to helping our clients and our people excel. For more information, please visit our web site at <https://www2.deloitte.com/au/en.html>.

Member of Deloitte Asia Pacific Limited and the Deloitte organisation

Liability limited by a scheme approved under Professional Standards Legislation.
© 2026 Deloitte Touche Tohmatsu.

Designed by CoRe Creative Services RITM2462628.