

**Members' voluntary liquidation  
or deregistration?**

We'll help take you in the right direction

### What is a Members' Voluntary Liquidation (MVL)?

A Members' Voluntary Liquidation is a smart, cost-effective way to reduce the burden of corporate maintenance costs. A MVL occurs when a special resolution is passed by a company's shareholders at an extraordinary general meeting. It will only happen after all, or the majority of its directors declare that the company is solvent and will be able to pay all its debts within 12 months.

The date the members or their respective representatives resolve to wind up the company determines the date of the liquidation. The MVL process usually takes six to nine months for a dormant company.

A company is dormant when:

- The company has ceased to trade
- All tax issues are finalised
- The company has a clean balance sheet with possibly only shareholder loans remaining to represent the equity and no liabilities.

### What is Deregistration?

**A company or one of its directors can apply for voluntary deregistration if the company meets the specific requirements contained in s601AA(2) of the Corporations Act 2001 (Act). The criteria requires that:**

- All the members of the company to agree to the deregistration
- The company does not carry-on business
- The company's assets are worth less than \$1,000
- The company has paid all fees and penalties payable under this Act
- The company has no outstanding liabilities
- The company is not party to any legal proceedings.

If the Australian Securities & Investments Commission (ASIC) is not aware of any failure to comply with the requirements in s601AA, the company may be deregistered after two months have passed since a notice of the proposed deregistration has been advertised.

## Critical business considerations

Considering the answers to the questions below will help you maximise the benefits and minimise the risks.

### Liquidate or Deregister?

MVL	Deregistration
<ul style="list-style-type: none"><li>Has the company been trading within the last five years?</li></ul>	<ul style="list-style-type: none"><li>Do you have an extensive knowledge of the trading history?</li></ul>
<ul style="list-style-type: none"><li>Does the company have outstanding liabilities?</li></ul>	<ul style="list-style-type: none"><li>Has the company been a non trading entity for the last five years?</li></ul>
<ul style="list-style-type: none"><li>Is the history unknown due to acquisition or previous directors being appointed?</li></ul>	<ul style="list-style-type: none"><li>Is the company classified as a shelf company?</li></ul>
<ul style="list-style-type: none"><li>Are the books and records inadequate to show all the corporate history?</li></ul>	<ul style="list-style-type: none"><li>Are there nil assets and liabilities in the company?</li></ul>
<ul style="list-style-type: none"><li>Has there been a recent closure of operations?</li></ul>	<ul style="list-style-type: none"><li>Have all statutory requirements and tax issues been finalised?</li></ul>
<ul style="list-style-type: none"><li>Are there outstanding tax issues and statutory requirements?</li></ul>	
<ul style="list-style-type: none"><li>Are there assets to be distributed to shareholders? There may be tax advantages for the distribution of certain assets through a liquidator's dividend. Advice should be sought to confirm the taxable treatment of assets.</li></ul>	

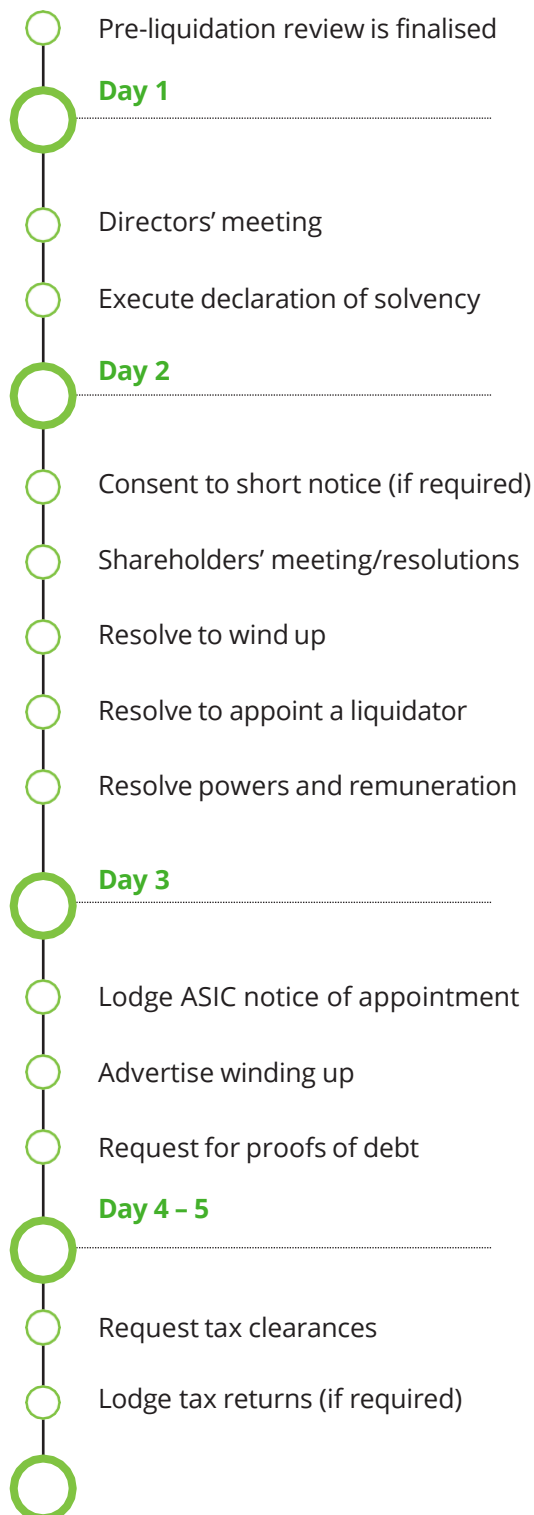
## Making the right choice

You want to make the right decision for your company when it comes to choosing between a MVL and deregistration. Are you aware of the benefits and risks associated with each option?

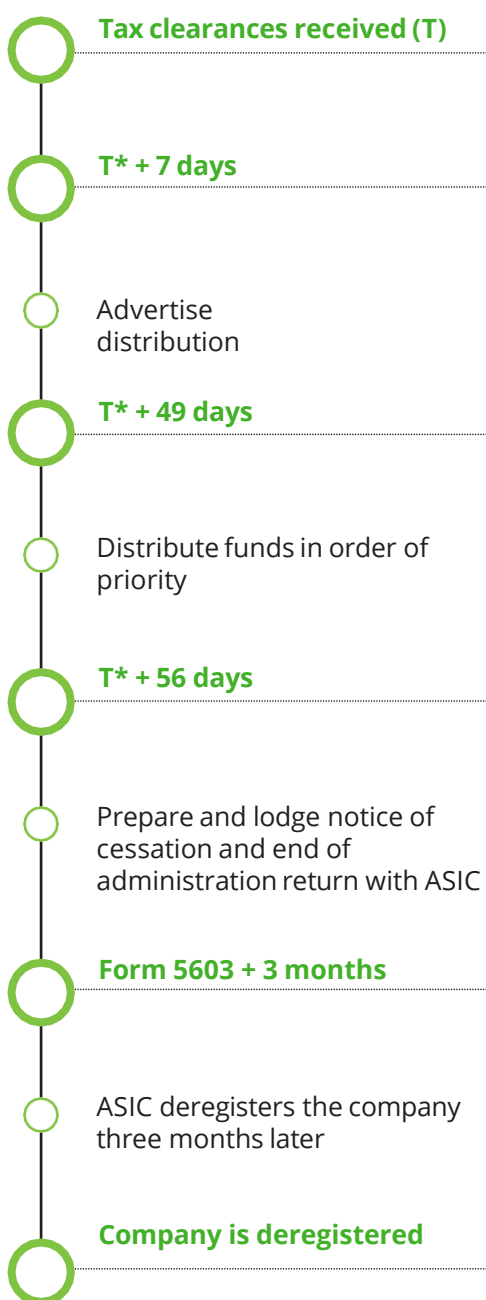
MVL	Benefit	Risk
Significantly reduces risk to the company and its officers from exposure to liabilities and claims.	✓	
The clearance process provides directors with a level of comfort that the company has met all its liabilities.	✓	
The distribution to shareholders can include undisclosed or contingent assets which may exclude them from vesting in ASIC.	✓	
If a company has been deregistered due to MVL, it is difficult to reinstate as it requires a court application.	✓	
Once a company is in liquidation, control vests with the liquidator. Directors should not need to become directly involved again.	✓	
Directors are required to make a declaration of solvency, and an estimate on the financial position of the company.	✓	
The company may be relieved from certain reporting obligations including the requirement to prepare audited financial reports.	✓	
Process can take 6 – 9 months, due to statutory advertising, notice periods and obtaining clearances from statutory authorities, including the ATO.		✓
Can be more expensive as: <ul style="list-style-type: none"> <li>• A liquidator is involved</li> <li>• Cost of statutory notices</li> <li>• Time it takes to undertake the liquidation process.</li> </ul>		✓

Deregistration	Benefit	Risk
The process is simple, quick and inexpensive.	✓	
Company can be reinstated more easily if claim arises post deregistration. This is more likely to arise where the company has been acquired and its history is unknown.		✓
Where the company is reinstated any person who was a company officer at the time of deregistration is also reinstated and deemed to have held that position throughout the period that the company was deregistered.		✓
<p>To deregister a company, the applicant, usually a director, must make a declaration that includes:</p> <ul style="list-style-type: none"> <li>• The company has less than \$1,000 of assets</li> <li>• Has no liabilities.</li> </ul> <p>All statements in the declaration must be correct as making a false declaration to the ASIC is an offence.</p>		✓

## MVL Milestones



## Timing to finalise once tax clearances are received



### **We'll take care of it**

**The successful execution of a Members' Voluntary Liquidation or Deregistration requires an experienced team with the necessary combination of accounting, finance, taxation and management skills to ensure that the process is undertaken efficiently, effectively and in compliance with the law.**

Deloitte's experienced team have superior knowledge of the Corporations Act and is able to assist you with:

- A pre-liquidation review and planning
- Project management of stakeholders
- Effective tax advice in conjunction with specialist tax and stamp duty advisors
- Assistance and experience with maximising returns from realisation of assets
- Resolution and settlement of creditor claims
- Crystallisation of contingent claims
- Liquidation administration and statutory requirements
- Taxation clearances
- End-to-end service to cost effectively manage the closure
- Provision of expertise to manage the closure, releasing directors' and managers' time.

## Contact us:

### Sydney

---



**David Mansfield**

Partner

Tel: +61 2 9840 6630

Email: [dmansfield@deloitte.com.au](mailto:dmansfield@deloitte.com.au)

### Melbourne

---



**Rob Woods**

Partner

Tel: +61 3 9671 6432

Email: [robwoods@deloitte.com.au](mailto:robwoods@deloitte.com.au)

### National Corporate Simplification Team

---



**Ling Wei**

Director and National Lead

Tel: +61 2 9322 5382

Email: [lingwei@deloitte.com.au](mailto:lingwei@deloitte.com.au)

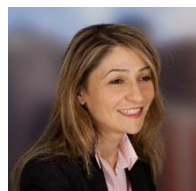


**Steven Schneider**

Associate Director

Tel: +61 3 9671 6367

Email: [steschneider@deloitte.com.au](mailto:steschneider@deloitte.com.au)



**Grammata Katz**

Manager

Tel: +61 3 9671 7340

Email: [gkatz@deloitte.com.au](mailto:gkatz@deloitte.com.au)

Contact us:

### South Australia / Northern Territory

---



**Nathan Schwarz**

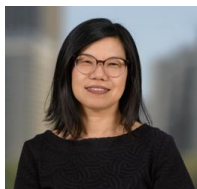
Principal

Tel: +61 402 251 341

Email: [nschwarz@deloitte.com.au](mailto:nschwarz@deloitte.com.au)

### National Corporate Simplification Team

---



**Ling Wei**

Director and National Lead

Tel: +61 2 9322 5382

Email: [lingwei@deloitte.com.au](mailto:lingwei@deloitte.com.au)

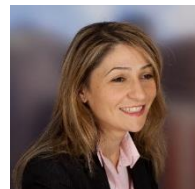


**Steven Schneider**

Associate Director

Tel: +61 3 9671 6367

Email: [steschneider@deloitte.com.au](mailto:steschneider@deloitte.com.au)



**Grammata Katz**

Manager

Tel: +61 3 9671 7340

Email: [gkatz@deloitte.com.au](mailto:gkatz@deloitte.com.au)

## Contact us:

### Brisbane

---



**Richard Hughes**

Partner

Tel: +61 7 3308 7279

Email: [richughes@deloitte.com.au](mailto:richughes@deloitte.com.au)



**David Orr**

Partner

Tel: +61 7 3308 7399

Email: [dorr@deloitte.com.au](mailto:dorr@deloitte.com.au)



**Anthony Lowe**

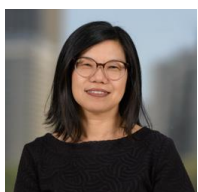
Director

Tel: +61 7 3308 7500

Email: [anlowe@deloitte.com.au](mailto:anlowe@deloitte.com.au)

### National Corporate Simplification Team

---



**Ling Wei**

Director and National Lead

Tel: +61 2 9322 5382

Email: [lingwei@deloitte.com.au](mailto:lingwei@deloitte.com.au)

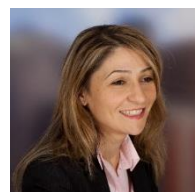


**Steven Schneider**

Associate Director

Tel: +61 3 9671 6367

Email: [stschneider@deloitte.com.au](mailto:stschneider@deloitte.com.au)



**Grammata Katz**

Manager

Tel: +61 3 9671 7340

Email: [gkatz@deloitte.com.au](mailto:gkatz@deloitte.com.au)

## Contact us:

### Perth

---



**Matthew Donnelly**

Partner

Tel: +61 8 9365 7150

Email: [mdonnelly@deloitte.com.au](mailto:mdonnelly@deloitte.com.au)



**Jude Morris**

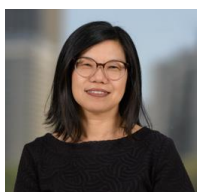
Principal

Tel: +61 8 9365 7258

Email: [judmorris@deloitte.com.au](mailto:judmorris@deloitte.com.au)

### National Corporate Simplification Team

---



**Ling Wei**

Director and National Lead

Tel: +61 2 9322 5382

Email: [lingwei@deloitte.com.au](mailto:lingwei@deloitte.com.au)

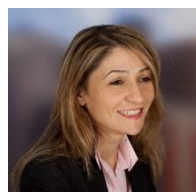


**Steven Schneider**

Associate Director

Tel: +61 3 9671 6367

Email: [steschneider@deloitte.com.au](mailto:steschneider@deloitte.com.au)



**Grammata Katz**

Manager

Tel: +61 3 9671 7340

Email: [gkatz@deloitte.com.au](mailto:gkatz@deloitte.com.au)

Contact us:

#### Tasmania / South Australia / Northern Territory

---



**Travis Anderson**

Partner

Tel: +61 3 6337 7051

Email: [travisanderson@deloitte.com.au](mailto:travisanderson@deloitte.com.au)

#### National Corporate Simplification Team

---



**Ling Wei**

Director and National Lead

Tel: +61 2 9322 5382

Email: [lingwei@deloitte.com.au](mailto:lingwei@deloitte.com.au)

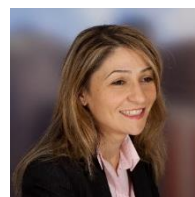


**Steven Schneider**

Associate Director

Tel: +61 3 9671 6367

Email: [steschneider@deloitte.com.au](mailto:steschneider@deloitte.com.au)



**Grammata Katz**

Manager

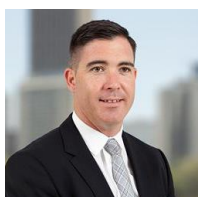
Tel: +61 3 9671 7340

Email: [gkatz@deloitte.com.au](mailto:gkatz@deloitte.com.au)

## Contact us:

### Sydney/Western Sydney

---



**Jason Tracy**  
Partner  
Tel: +61 2 9322 3858  
Email: [jtracy@deloitte.com.au](mailto:jtracy@deloitte.com.au)



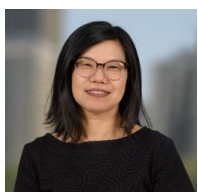
**Sam Marsden**  
Partner  
Tel: +61 2 9322 7502  
Email: [smarsden@deloitte.com.au](mailto:smarsden@deloitte.com.au)



**David Mansfield**  
Partner  
Tel: +61 2 9840 6630  
Email: [dmansfield@deloitte.com.au](mailto:dmansfield@deloitte.com.au)

### National Corporate Simplification Team

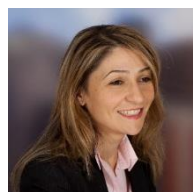
---



**Ling Wei**  
Director and National Lead  
Tel: +61 2 9322 5382  
Email: [lingwei@deloitte.com.au](mailto:lingwei@deloitte.com.au)



**Steven Schneider**  
Associate Director  
Tel: +61 3 9671 6367  
Email: [steschnneider@deloitte.com.au](mailto:steschnneider@deloitte.com.au)



**Grammata Katz**  
Manager  
Tel: +61 3 9671 7340  
Email: [gkatz@deloitte.com.au](mailto:gkatz@deloitte.com.au)

This communication contains general information only, and none of Deloitte Touche Tohmatsu Limited (“DTTL”), its global network of member firms or their related entities (collectively, the “Deloitte organisation”) is, by means of this communication, rendering professional advice or services. Before making any decision or taking any action that may affect your finances or your business, you should consult a qualified professional adviser.

No representations, warranties or undertakings (express or implied) are given as to the accuracy or completeness of the information in this communication, and none of DTTL, its member firms, related entities, employees or agents shall be liable or responsible for any loss or damage whatsoever arising directly or indirectly in connection with any person relying on this communication. DTTL and each of its member firms, and their related entities, are legally separate and independent entities.

#### **About Deloitte**

Deloitte refers to one or more of Deloitte Touche Tohmatsu Limited (“DTTL”), its global network of member firms, and their related entities (collectively, the “Deloitte organisation”). DTTL (also referred to as “Deloitte Global”) and each of its member firms and related entities are legally separate and independent entities, which cannot obligate or bind each other in respect of third parties. DTTL and each DTTL member firm and related entity is liable only for its own acts and omissions, and not those of each other. DTTL does not provide services to clients. Please see [www.deloitte.com/about](http://www.deloitte.com/about) to learn more.

Deloitte is a leading global provider of audit and assurance, consulting, financial advisory, risk advisory, tax and related services. Our global network of member firms and related entities in more than 150 countries and territories (collectively, the “Deloitte organisation”) serves four out of five Fortune Global 500® companies. Learn how Deloitte’s approximately 312,000 people make an impact that matters at [www.deloitte.com](http://www.deloitte.com).

#### **About Deloitte Australia**

The Australian partnership of Deloitte Touche Tohmatsu is a member of Deloitte Asia Pacific Limited and the Deloitte organisation. As one of Australia’s leading professional services firms, Deloitte Touche Tohmatsu and its affiliates provide audit, tax, consulting, risk advisory, and financial advisory services through approximately 8000 people across the country. Focused on the creation of value and growth and known as an employer of choice for innovative human resources programs, we are dedicated to helping our clients and our people excel. For more information, please visit our web site at <https://www2.deloitte.com/au/en.html>.

Liability limited by a scheme approved under Professional Standards Legislation.

Member of Deloitte Asia Pacific Limited and the Deloitte organisation.

©2022 Deloitte Financial Advisory. Deloitte Touche Tohmatsu

Designed by CoRe Creative Services. RITM0892587